

4

3

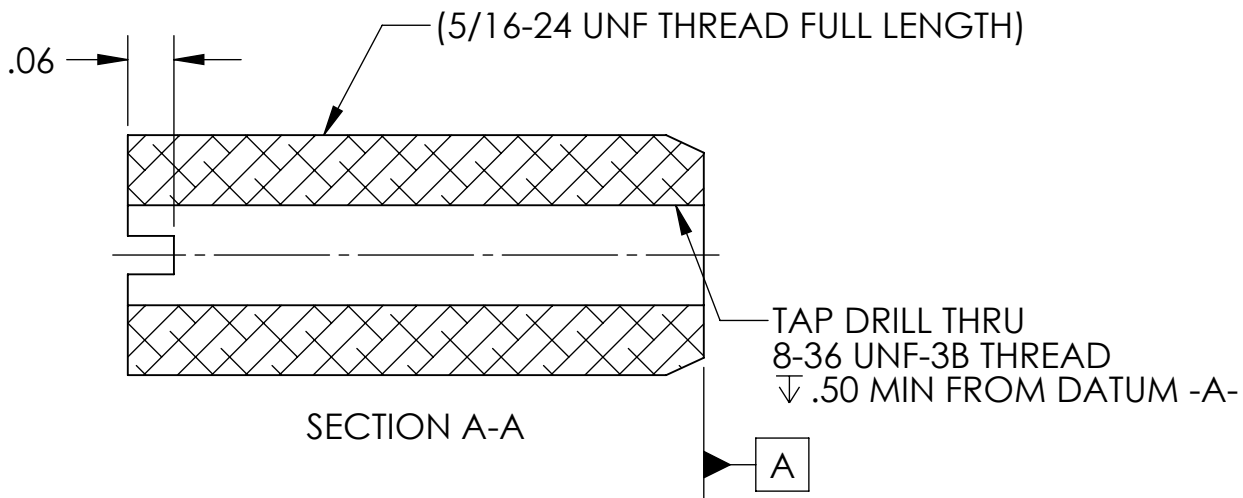
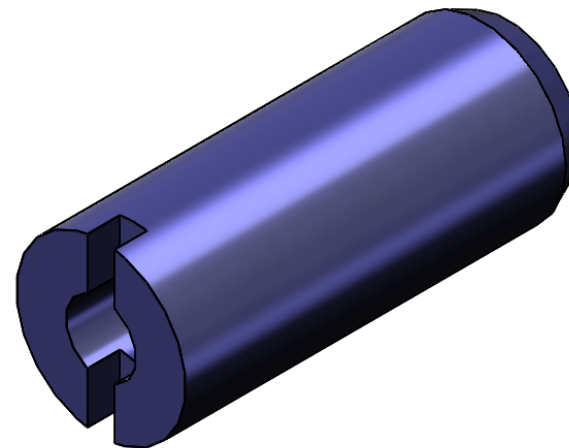
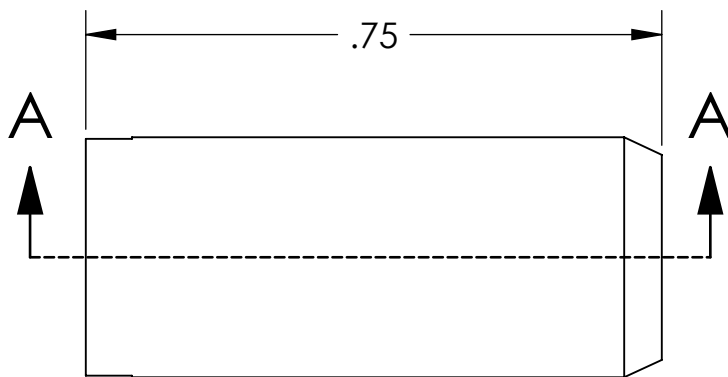
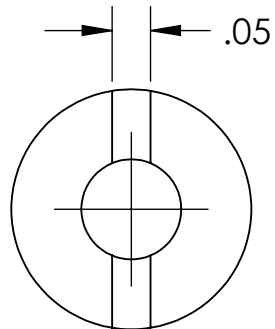
2

1

NOTES CONTINUED:

5. BAG ALL ITEMS AND MARK OR TAG EACH BAG WITH DRAWING NUMBER, REVISION, AND QUANTITY. EXAMPLE: DXXXXXX-VY, QTY: TBD

REV.	DATE	DCN #	DRAWING TREE #
v1	25 JAN 2010	E1000017-v1	-
-	-	-	-
-	-	-	-



NOTES AND TOLERANCES: (UNLESS OTHERWISE SPECIFIED)

DIMENSIONS ARE IN INCHES

TOLERANCES:
.XX ± .01
.XXX ± .005

ANGULAR ± 1.0°

1. INTERPRET DRAWING PER ASME Y14.5-1994.
2. REMOVE ALL SHARP EDGES, R.02 MIN.
3. DO NOT SCALE FROM DRAWING.
4. ALL MACHINING FLUIDS MUST BE FULLY SYNTHETIC, FULLY WATER SOLUBLE AND FREE OF SULFUR, SILICONE, AND CHLORINE.

MATERIAL 5/16-24 UNF THREADED ROD, 6061-T6

FINISH N/A μinch

LIGO CALIFORNIA INSTITUTE OF TECHNOLOGY
 MASSACHUSETTS INSTITUTE OF TECHNOLOGY

SYSTEM ADVANCED LIGO SUB-SYSTEM AOS

NEXT ASSY

PART NAME ALIGO AOS OPLEV SCOPE MOUNT EXTENSION SCREW

DESIGNER	C. CONLEY	25 JAN 2010	SIZE	DWG. NO.	REV.
DRAFTER	C. CONLEY	25 JAN 2010	A	D1000132	v1
CHECKER					
APPROVAL					

SCALE: NONE PROJECTION: SHEET 1 OF 1

4

3

2

1