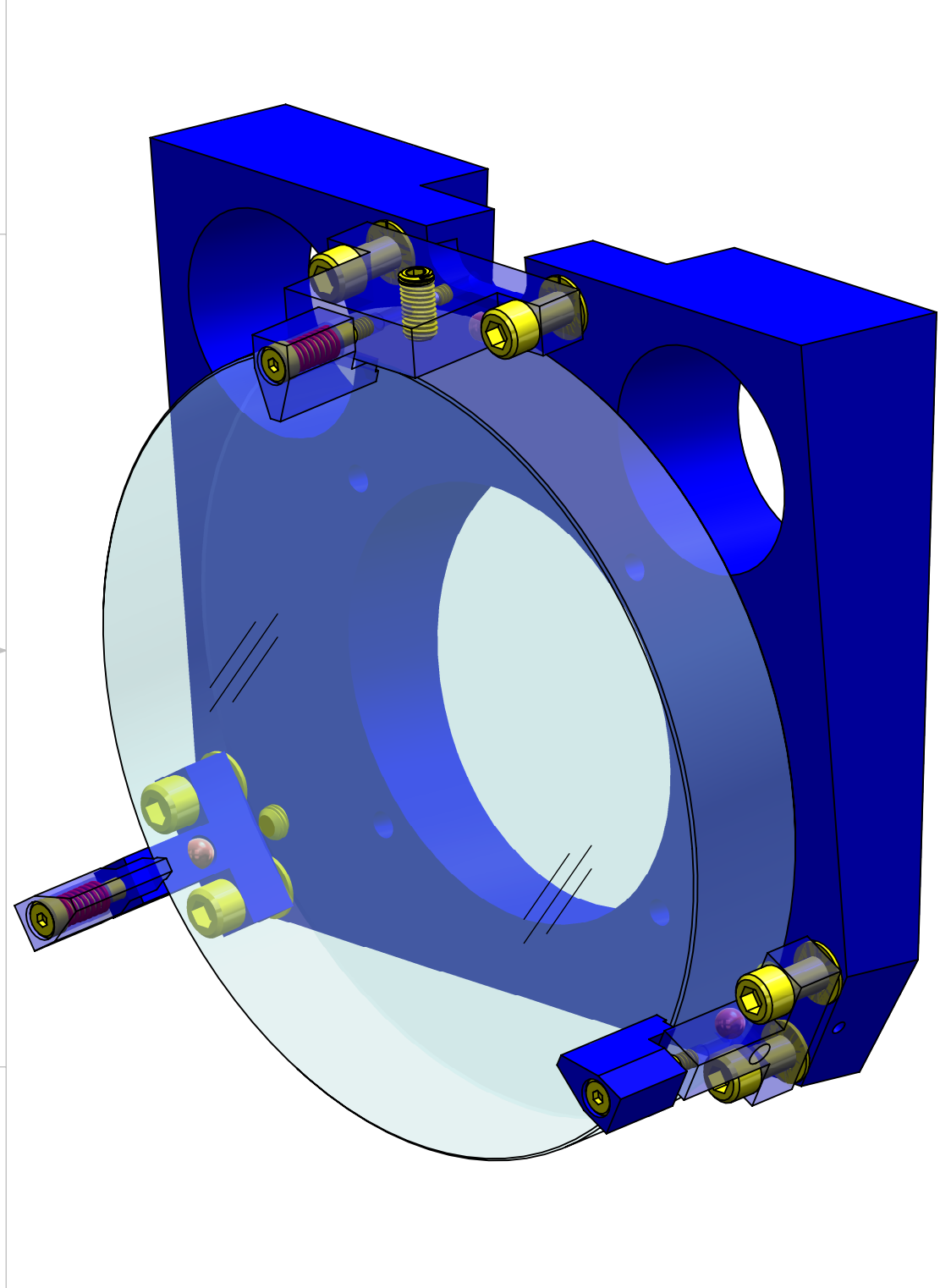


NOTES CONTINUED:
 5. BAG AND TAG ASSEMBLIES INDIVIDUALLY WITH THEIR DRAWING NUMBER, REVISION, AND SERIAL NUMBER. SERIAL NUMBERS START AT 001 FOR THE FIRST ARTICLE AND PROCEED CONSECUTIVELY.
 EXAMPLE (TAG): DXXXXXX-VY, S/N 001
 6. APPROXIMATE WEIGHT = 4.76 LB [2.16 KG].
 ⑦ ELECTRO-POLISH ITEMS ⑦ PER LIGO SPECIFICATION E0900364, SECTION 5.2.2.

REV.	DATE	DCN #	BOM #
v1	24 NOV 2010	E1000735-v1	E1000732-v1
v2	13 DEC 2011	E1100351-v1	E1000732-v2
-	-	-	-



12	94035A999 (McM-Carr, special order) or equiv		PRECISION SKT SHLDR SCRW 5/32 O.D., 5/8 L, #6-32 X 3/16 THD	18-8 SSSL	3	2	5
11	9435K420 (McM-Carr) or equiv		COMPRESSION SPRING .240 O.D., .032 W.D., .63 L, 23.32#/IN	302 SSSL	3	1	4
10	D1001136	v2	aLIGO ETM F1 MIRROR CLAMP	6061-T6 Al	3	0	3
9	D1101480	v1	TMS TELESCOPE FIRST FOLD MIRROR First Article	ZERODUR	1	0	1
8	99934A330 (McM-Carr) or equiv		SKT SET SCRW, 6-32 X 1/8 L, SILVER TIP	18-8 SSSL	3	1	4
⑦ 7	94355A614 (McM-Carr) or equiv		SKT SET SCRW, FLAT PT, 1/4-28 X 1/2	18-8 SSSL	3	1	4
6	MS16995-51		SCREW, SOCKET HEAD CAP, 1/4-20 UNC-2A X 0.875 LONG	300 SSSL	6	2	8
5	9529K44 (McM-Carr) or equiv		440C SS BALL 7/32" DIAMETER, GRADE 24	AISI 440C	3	2	5
4	D1002336	v1	aLIGO ETM F1 MIRROR SIDE CLAMP LOWER	6061-T6 Al	2	0	2
3	D1002337	v1	aLIGO ETM F1 MIRROR SIDE CLAMP UPPER	6061-T6 Al	1	0	1
2	96861A600 (McM-Carr) or equiv		VENTED FLAT WASHER .255 ID, .468 OD, .032 TH	18-8 SSSL	6	2	8
1	D1000164	v1	aLIGO F1 MIRROR WEDGE ANGULAR PLATE	6061-T6 Al	1	0	1
ITEM NO.	NUMBER	REV	DESCRIPTION	MATERIAL	QTY.	SPARE QTY.	TOTAL QTY.

NOTES AND TOLERANCES: (UNLESS OTHERWISE SPECIFIED)

1. INTERPRET DRAWING PER ASME Y14.5-1994.
 2. REMOVE ALL SHARP EDGES, R.02 MIN.
 3. DO NOT SCALE FROM DRAWING.
 4. ALL MACHINING FLUIDS MUST BE FULLY SYNTHETIC, FULLY WATER SOLUBLE AND FREE OF SULFUR, SILICONE, AND CHLORINE.

DIMENSIONS ARE IN INCHES
 TOLERANCES:
 .XX ± .01
 .XXX ± .005
 ANGULAR ± 1.0°

LIGO CALIFORNIA INSTITUTE OF TECHNOLOGY
 MASSACHUSETTS INSTITUTE OF TECHNOLOGY

ADVANCED LIGO SUB-SYSTEM **AOS**

PART NAME aLIGO F1 MIRROR ASSEMBLY

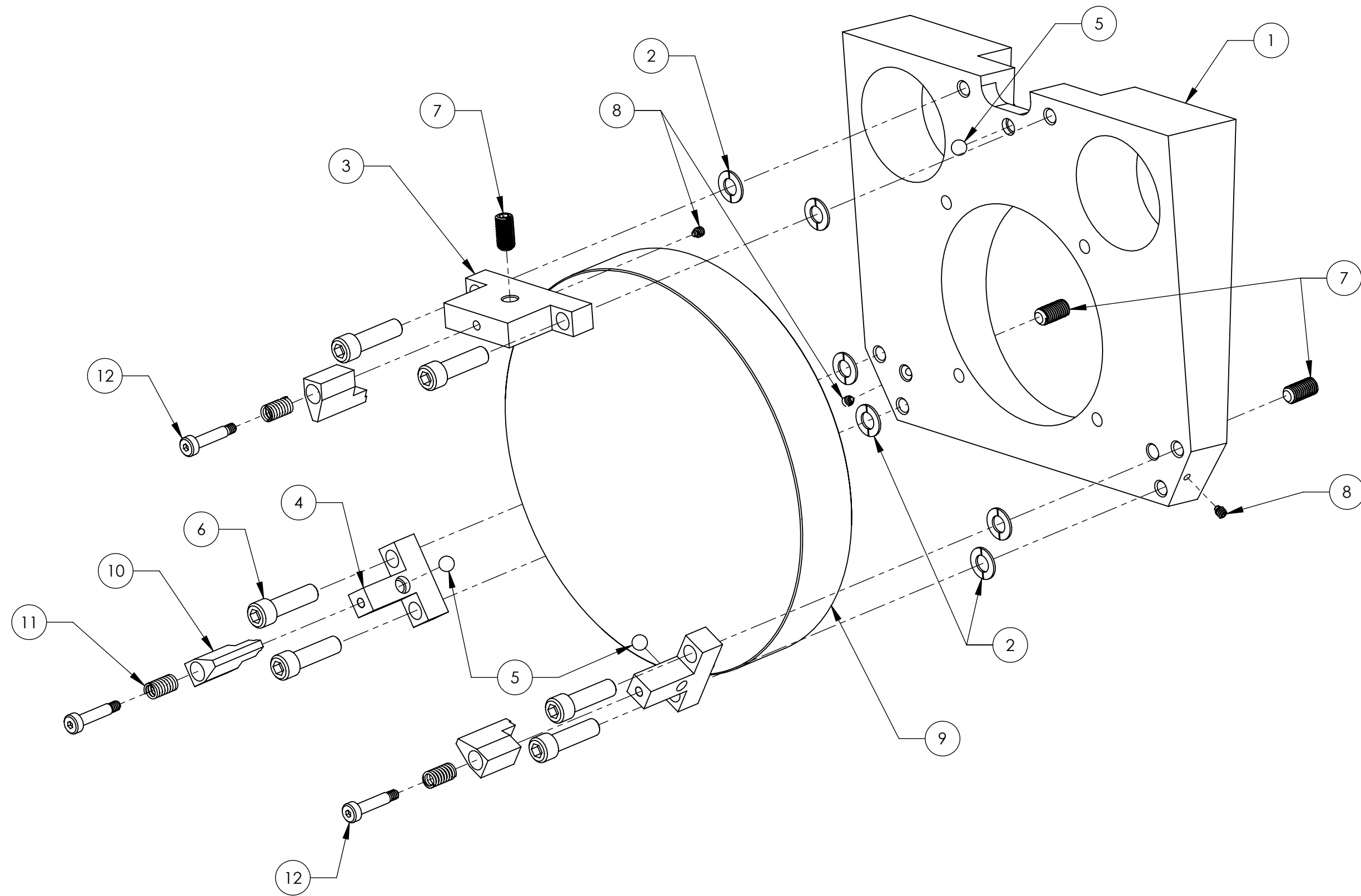
DESIGNER K. MAILAND 01 OCT 2010 **SIZE** DWG. NO. **B** **D1000084** **REV.** v2
DRAFTER M. MILLER 24 NOV 2010
CHECKER SEE DCN
APPROVAL SEE DCN

MATERIAL N/A **FINISH** N/A μinch **NEXT ASSY** D1003120

SCALE NONE **PROJECTION:** **SHEET 1 OF 2**

D1000084 aLIGO_F1_MIRROR, PART PDM REV: X-342, DRAWING PDM REV: X-056

D1000084 dLIGO_FT_MIRROR; PART PDM REV: X-342; DRAWING PDM REV: X-056



 CALIFORNIA INSTITUTE OF TECHNOLOGY MASSACHUSETTS INSTITUTE OF TECHNOLOGY		
SIZE	DWG. NO.	REV.
B	D1000084	v2
SCALE: NONE	PROJECTION:	SHEET 2 OF 2