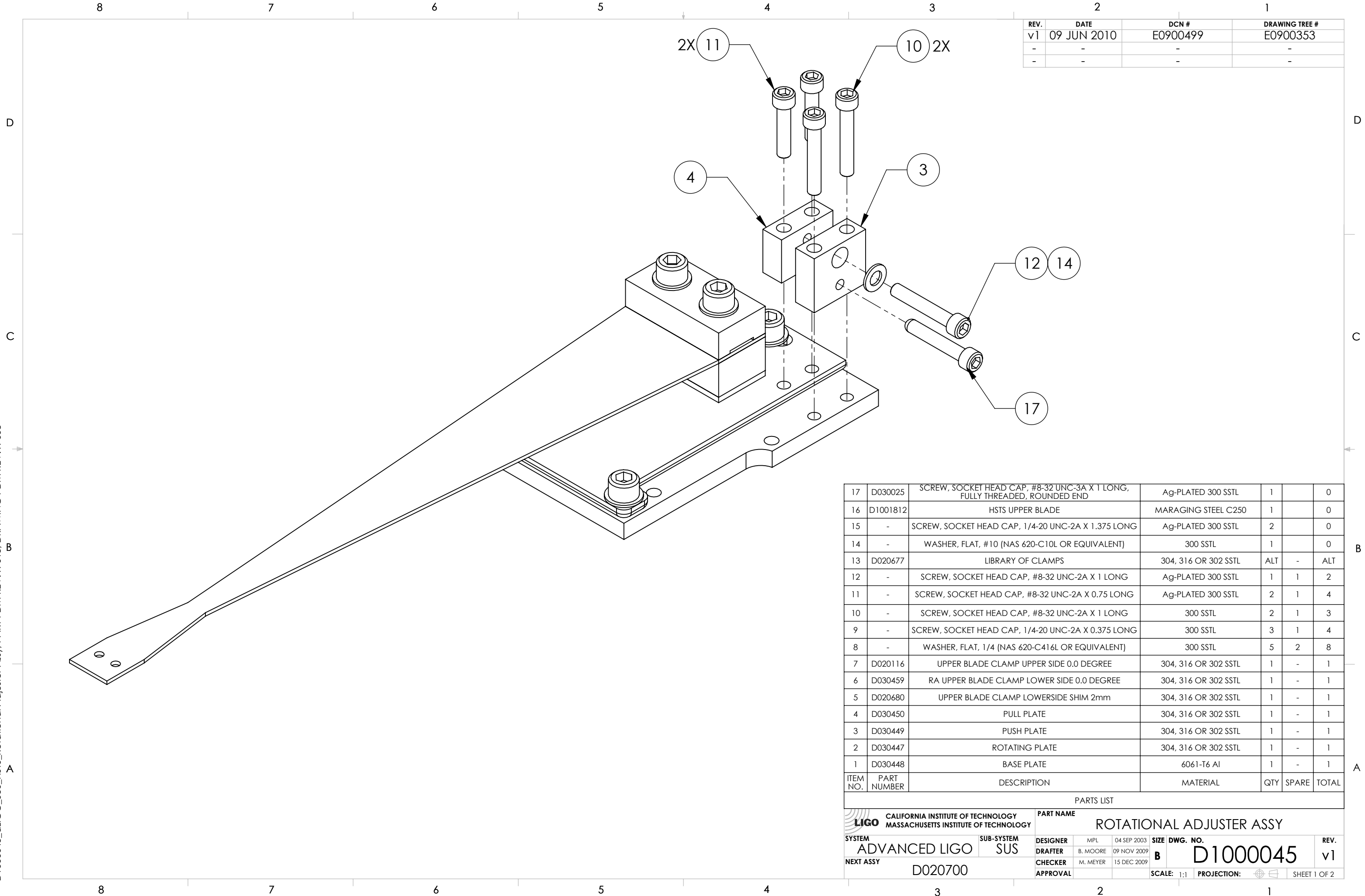


D1000045_d1IGO_SUS_HSTS_Rotational Adjuster Assy, PART PDM REV: X-013, DRAWING PDM REV: X-008



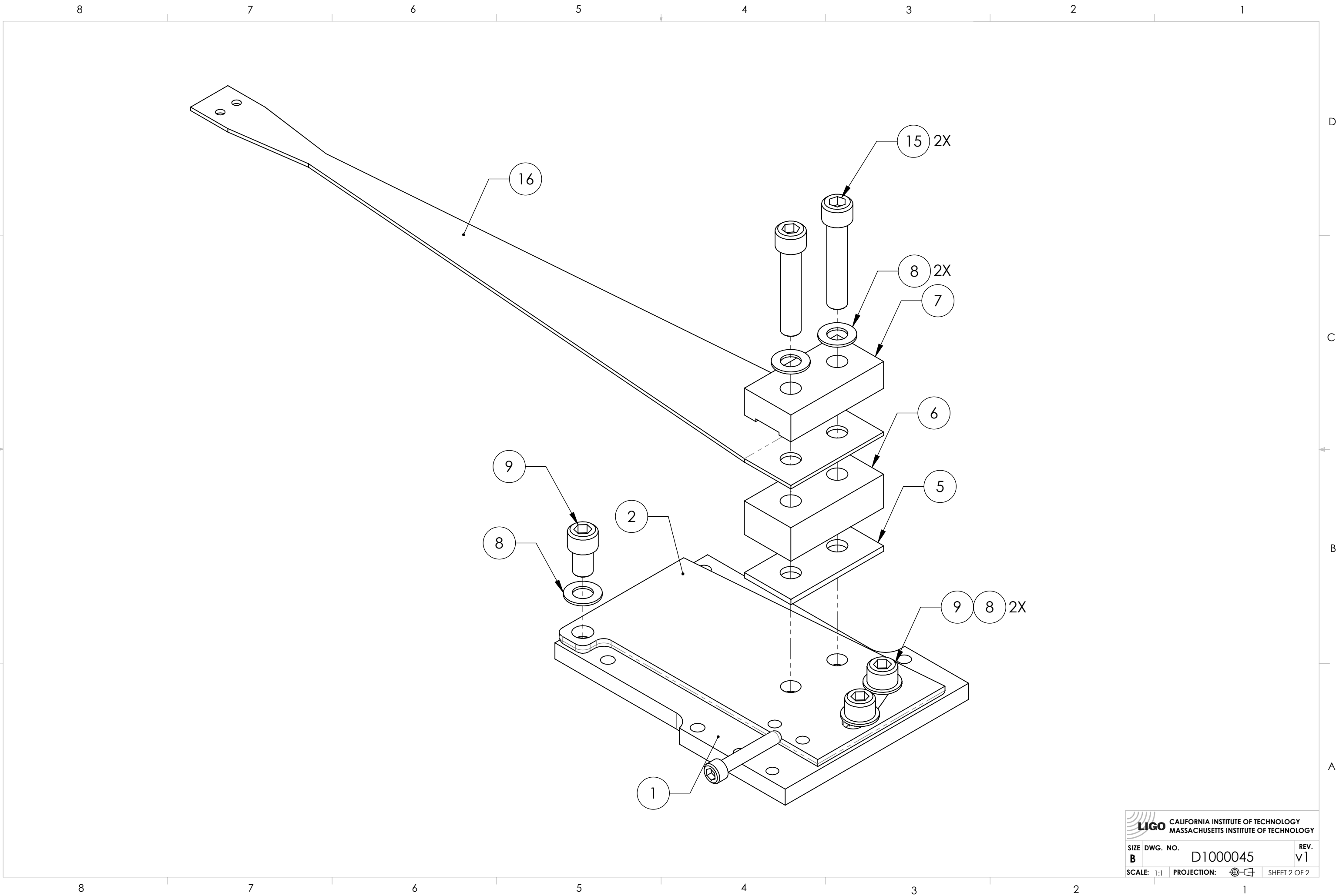
REV.	DATE	DCN #	DRAWING TREE #
v1	09 JUN 2010	E0900499	E0900353
-	-	-	-
-	-	-	-


ITEM NO.	PART NUMBER	DESCRIPTION	MATERIAL	QTY	SPARE	TOTAL
17	D030025	SCREW, SOCKET HEAD CAP, #8-32 UNC-3A X 1 LONG, FULLY THREADED, ROUNDED END	Ag-PLATED 300 SSSL	1		0
16	D1001812	HSTS UPPER BLADE	MARAGING STEEL C250	1		0
15	-	SCREW, SOCKET HEAD CAP, 1/4-20 UNC-2A X 1.375 LONG	Ag-PLATED 300 SSSL	2		0
14	-	WASHER, FLAT, #10 (NAS 620-C10L OR EQUIVALENT)	300 SSSL	1		0
13	D020677	LIBRARY OF CLAMPS	304, 316 OR 302 SSSL	ALT	-	ALT
12	-	SCREW, SOCKET HEAD CAP, #8-32 UNC-2A X 1 LONG	Ag-PLATED 300 SSSL	1	1	2
11	-	SCREW, SOCKET HEAD CAP, #8-32 UNC-2A X 0.75 LONG	Ag-PLATED 300 SSSL	2	1	4
10	-	SCREW, SOCKET HEAD CAP, #8-32 UNC-2A X 1 LONG	300 SSSL	2	1	3
9	-	SCREW, SOCKET HEAD CAP, 1/4-20 UNC-2A X 0.375 LONG	300 SSSL	3	1	4
8	-	WASHER, FLAT, 1/4 (NAS 620-C416L OR EQUIVALENT)	300 SSSL	5	2	8
7	D020116	UPPER BLADE CLAMP UPPER SIDE 0.0 DEGREE	304, 316 OR 302 SSSL	1	-	1
6	D030459	RA UPPER BLADE CLAMP LOWER SIDE 0.0 DEGREE	304, 316 OR 302 SSSL	1	-	1
5	D020680	UPPER BLADE CLAMP LOWERSIDE SHIM 2mm	304, 316 OR 302 SSSL	1	-	1
4	D030450	PULL PLATE	304, 316 OR 302 SSSL	1	-	1
3	D030449	PUSH PLATE	304, 316 OR 302 SSSL	1	-	1
2	D030447	ROTATING PLATE	304, 316 OR 302 SSSL	1	-	1
1	D030448	BASE PLATE	6061-T6 Al	1	-	1

PARTS LIST

CALIFORNIA INSTITUTE OF TECHNOLOGY MASSACHUSETTS INSTITUTE OF TECHNOLOGY		PART NAME ROTATIONAL ADJUSTER ASSY	
SYSTEM ADVANCED LIGO	SUB-SYSTEM SUS	DESIGNER MPL 04 SEP 2003	SIZE DWG. NO. B D1000045
DRAFTER B. MOORE 09 NOV 2009	CHECKER M. MEYER 15 DEC 2009	APPROVAL	REV. v1
NEXT ASSY D020700	SCALE: 1:1	PROJECTION:	SHEET 1 OF 2

D1000045_dLIGO_SUS_HSTS_Rotational Adjuster Assy, PART PDM REV: X-013, DRAWING PDM REV: X-008



 CALIFORNIA INSTITUTE OF TECHNOLOGY MASSACHUSETTS INSTITUTE OF TECHNOLOGY		
SIZE	DWG. NO.	REV.
B	D1000045	v1
SCALE: 1:1	PROJECTION:	SHEET 2 OF 2