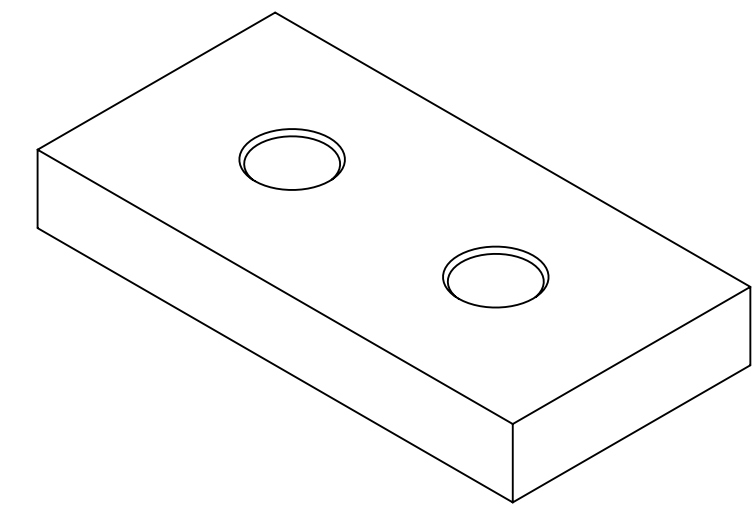
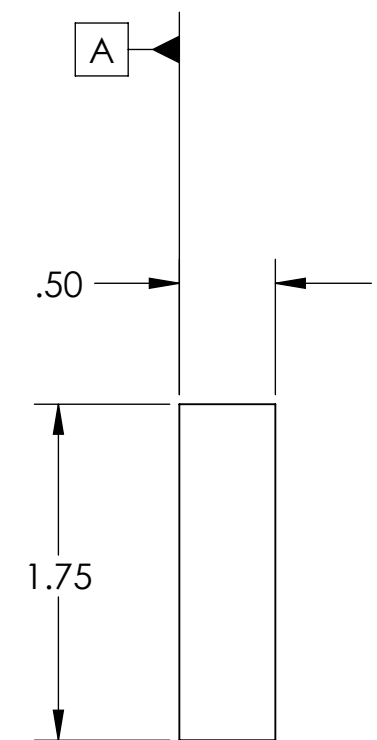
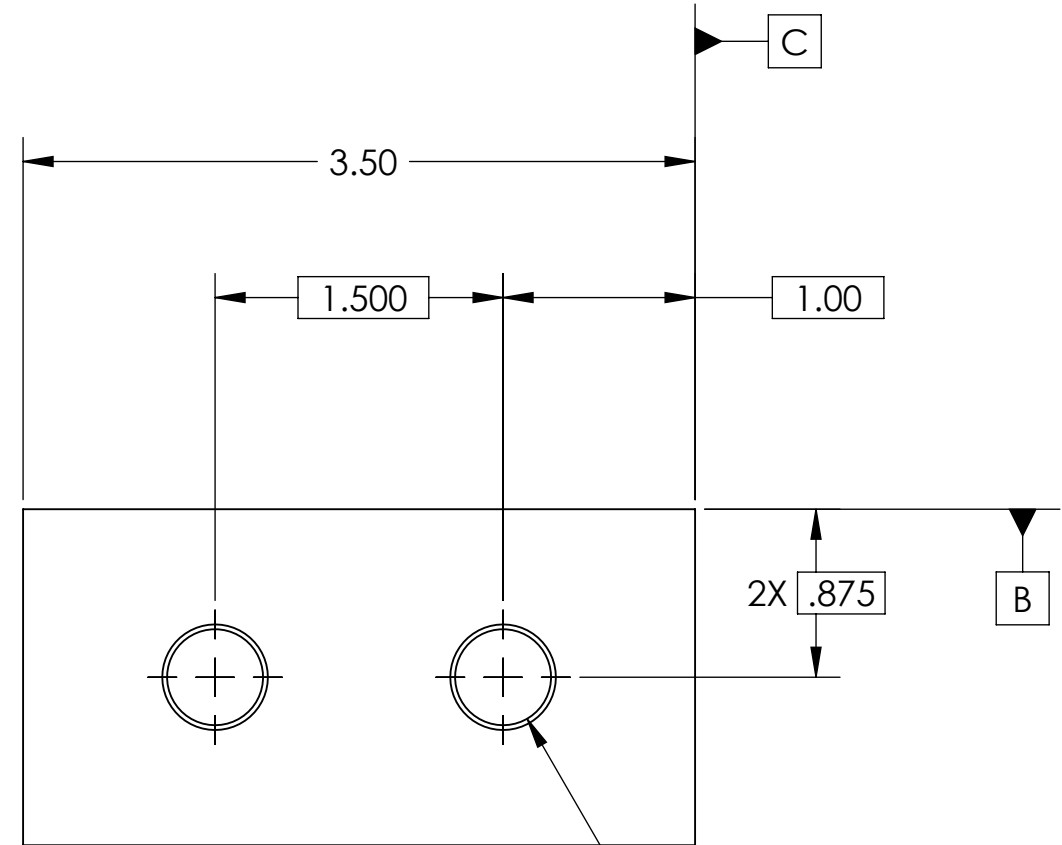


REV	DATE	DCN #	APPROVAL	DESCRIPTION
A	7/27/2007		A. STEIN	INITIAL RELEASE



2X 1/2-20 UNF THRU ALL
 ✓ ϕ .55 X 82°, BOTH SIDES

ϕ	.010	A	B	C
--------	------	---	---	---

NOTES: (UNLESS OTHERWISE SPECIFIED)		
1. DO NOT SCALE FROM DRAWING. 2. REMOVE ALL SHARP EDGES, R.02 MIN. 3. ALL MACHINING FLUIDS SHALL BE WATER SOLUBLE AND FREE OF SULFUR, CHLORINE AND SILICONE, SUCH AS CINCINNATI MILACRON'S CIMTECH 410 (STAINLESS STEEL)		
DIMENSIONS ARE IN INCHES		
TOLERANCES: .XX ± 0.015 .XXX ± 0.005		
ANGULAR ± 0.5 °		
MATERIAL	303 SS	
FINISH	NONE	
DRAWN	NAME	DATE
CHECKED	A. STEIN	7/19/2007
APPROVED		
CALIFORNIA INSTITUTE OF TECHNOLOGY MASSACHUSETTS INSTITUTE OF TECHNOLOGY IGR, GLASGOW UNIVERSITY GEO 600 GROUP		
SYSTEM ADVANCED LIGO		
SUB-SYSTEM SEI		
NEXT ASSY TEST STAND, HAM ISI		
PART NAME TEST STAND NUT PLATE		
SIZE	DWG. NO.	REV.
B	D070275	A
SCALE: 1:1	PROJECTION:	SHEET 1 OF 1