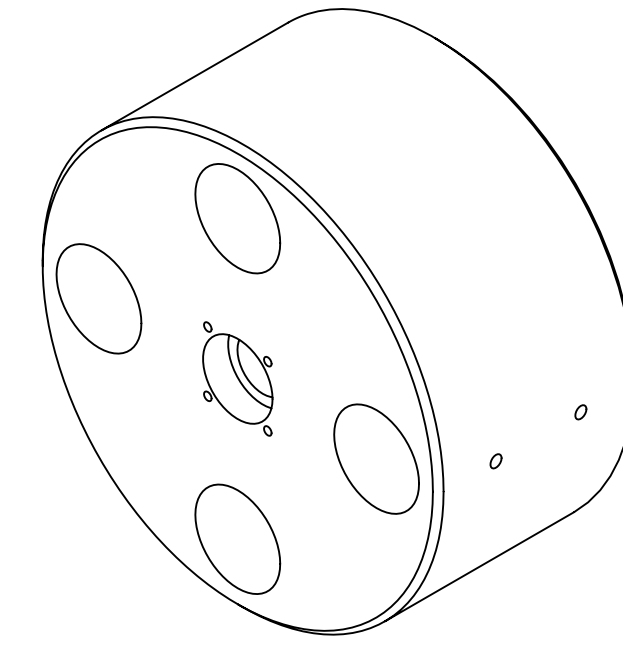
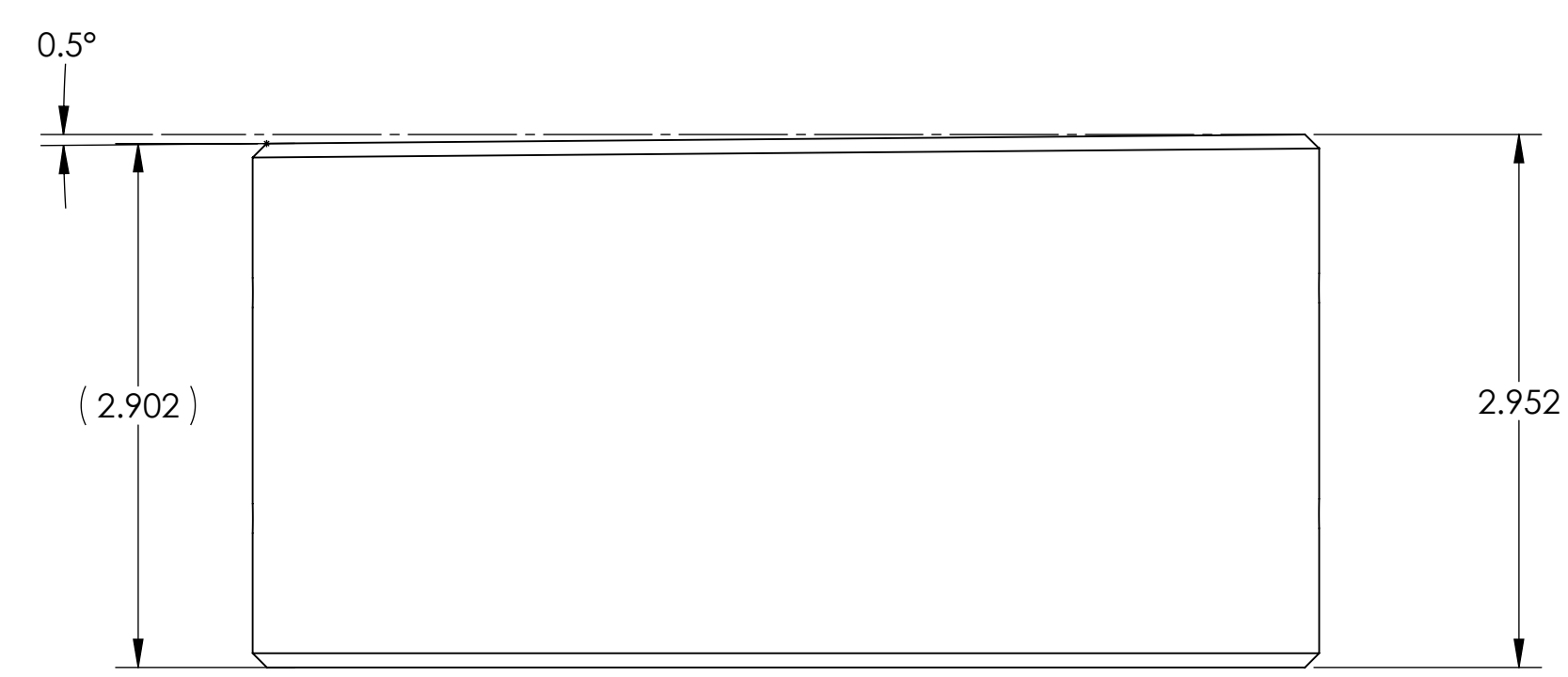
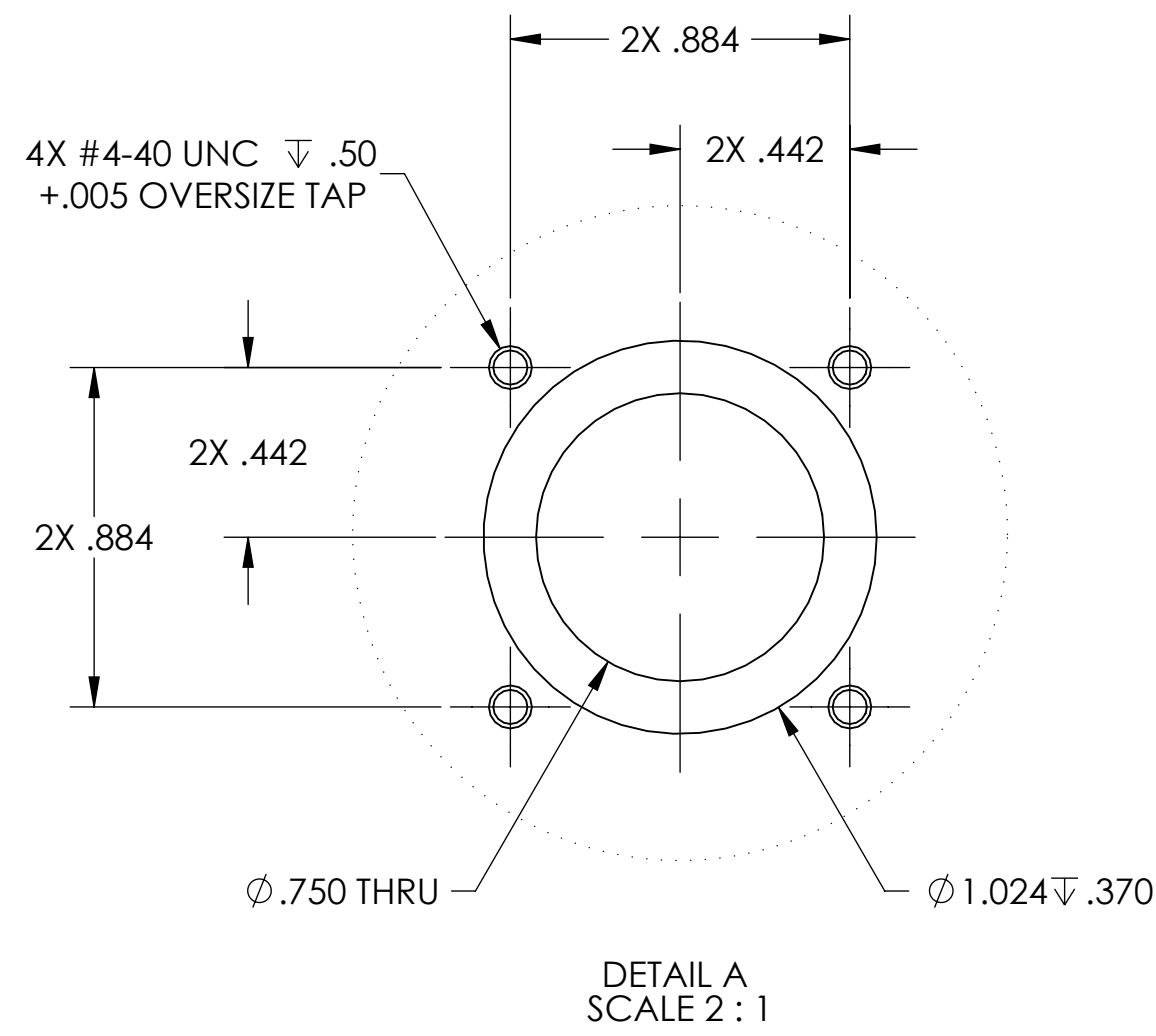
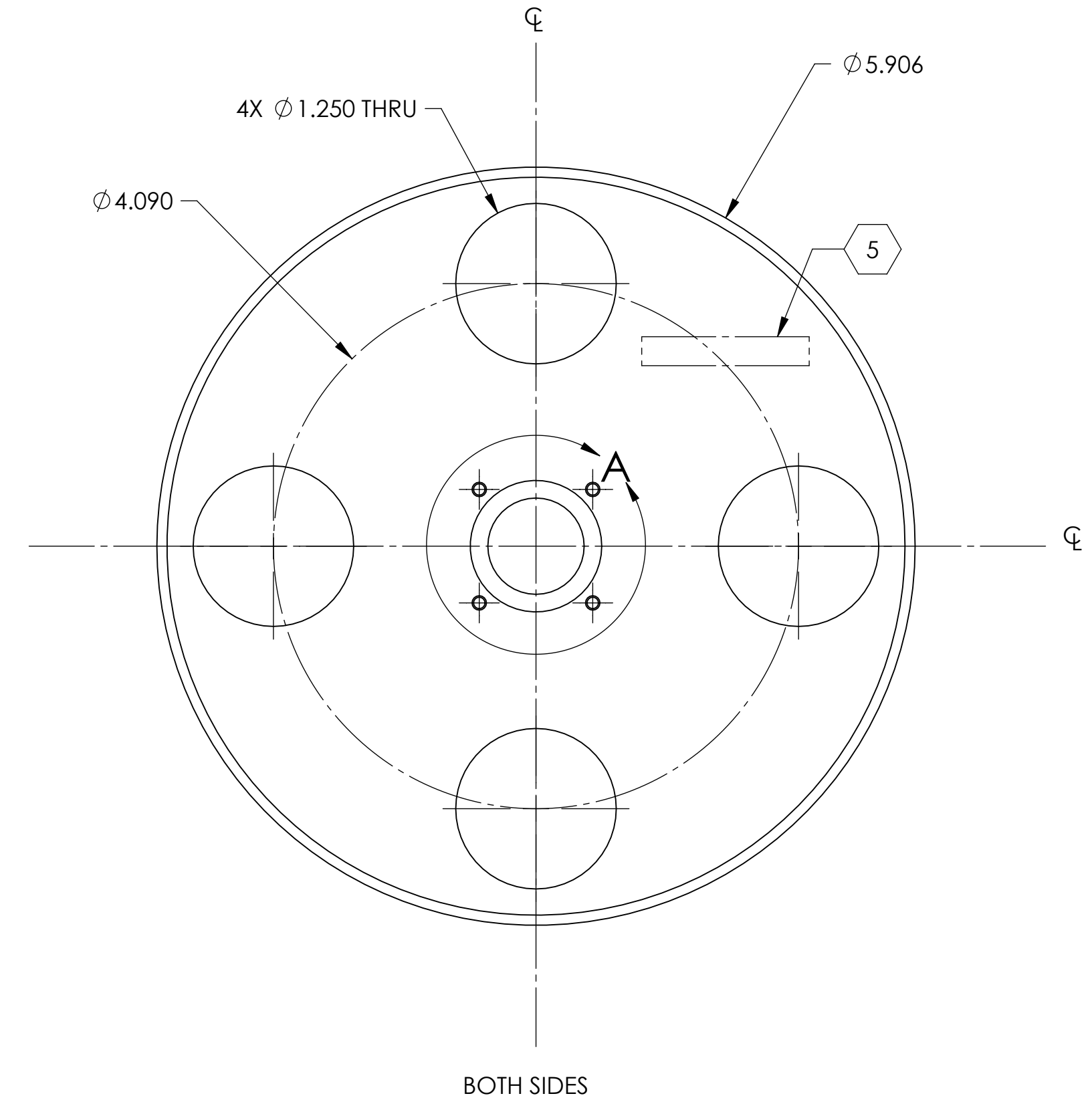
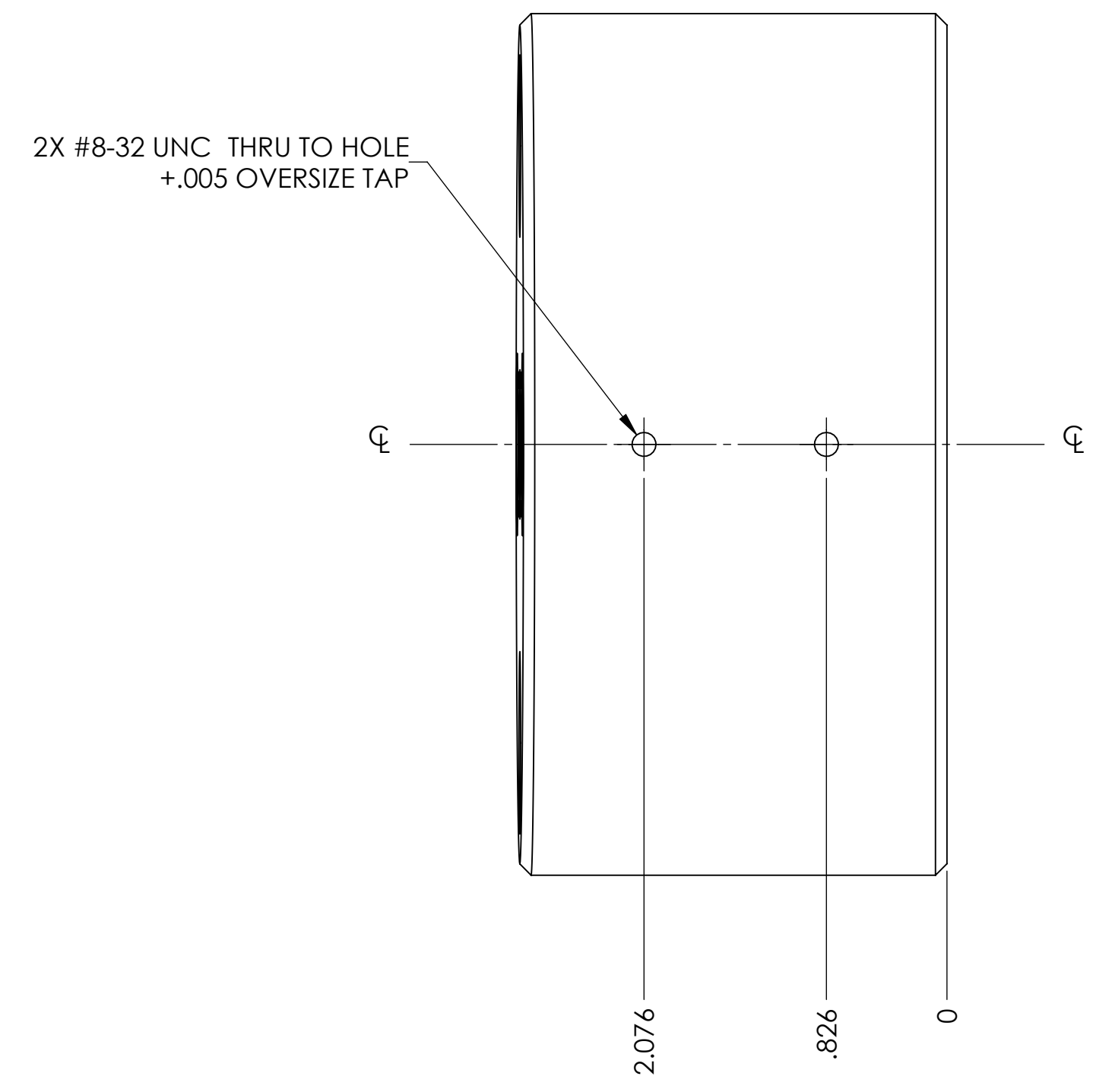


NOTES CONTINUED:
 ⑤ SCRIBE, ENGRAVE, OR MECHANICALLY STAMP (NO INKS OR DYES) DRAWING PART NUMBER, REVISION (AND VARIANT OR TYPE IF APPLICABLE) ON NOTED SURFACE OF PART FOLLOWED ON THE NEXT LINE WITH A THREE DIGIT SERIAL NUMBER. SERIAL NUMBERS START AT 001 FOR THE FIRST ARTICLE AND PROCEED CONSECUTIVELY. USE MINIMUM 0.12" HIGH CHARACTERS, UNLESS THE SIZE OF THE PART DICTATES SMALLER CHARACTERS. A VIBRATORY TOOL MAY BE USED. EXAMPLE: DXXXXXX-VY, TYPE-XX, S/N XXX

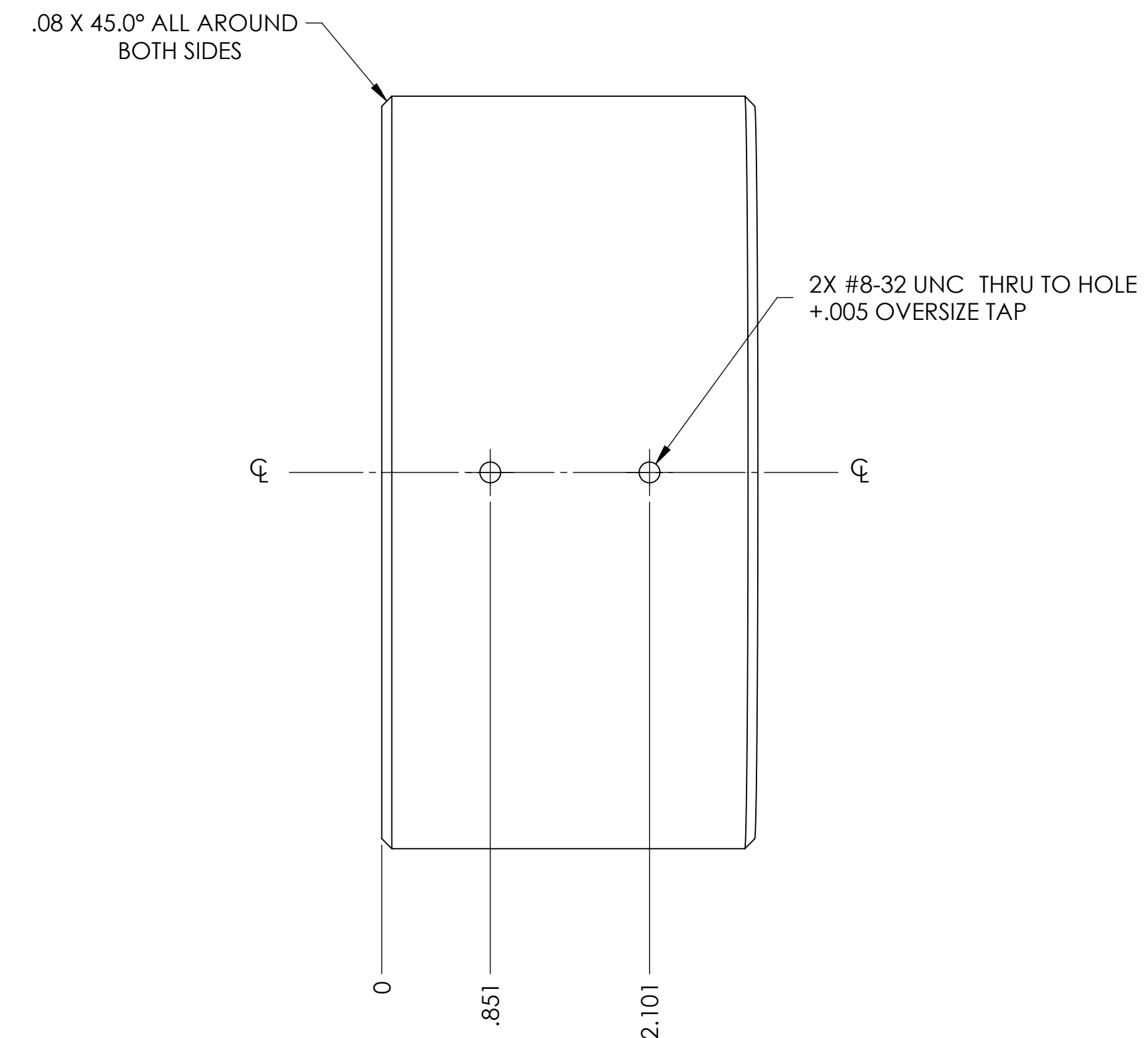
REV.	DATE	DCN #	DRAWING TREE #
A	24 JUN 2004	E040303-00	-
v1	30 DEC 2009	E0900507	E0900353
-	-	-	-



ISOMETRIC VIEW



BOTH SIDES



NOTES AND TOLERANCES: (UNLESS OTHERWISE SPECIFIED)	
DIMENSIONS ARE IN INCHES	
TOLERANCES: .XX ± .01 .XXX ± .005	
ANGULAR ± 0.1°	
MATERIAL	FINISH
6061-T6 Al	32 μinch

LIGO CALIFORNIA INSTITUTE OF TECHNOLOGY
 MASSACHUSETTS INSTITUTE OF TECHNOLOGY

SYSTEM: ADVANCED LIGO
 SUB-SYSTEM: SUS
 NEXT ASSY: D020700

PART NAME			
METAL LOWER MASS (MC), HSTS			
DESIGNER	M. MEYER	10 AUG 2009	SIZE DWG. NO.
DRAFTER	B. MOORE	13 JAN 2010	D D020234
CHECKER	M. MEYER	14 JAN 2010	
APPROVAL			SCALE: 1:1
			PROJECTION:
			SHEET 1 OF 1

DD020234_AchUIGO_316_HSTS_MetalLowerMass_PART_PDM_REV-X:005_DRAWING_PDM_REV-X:004