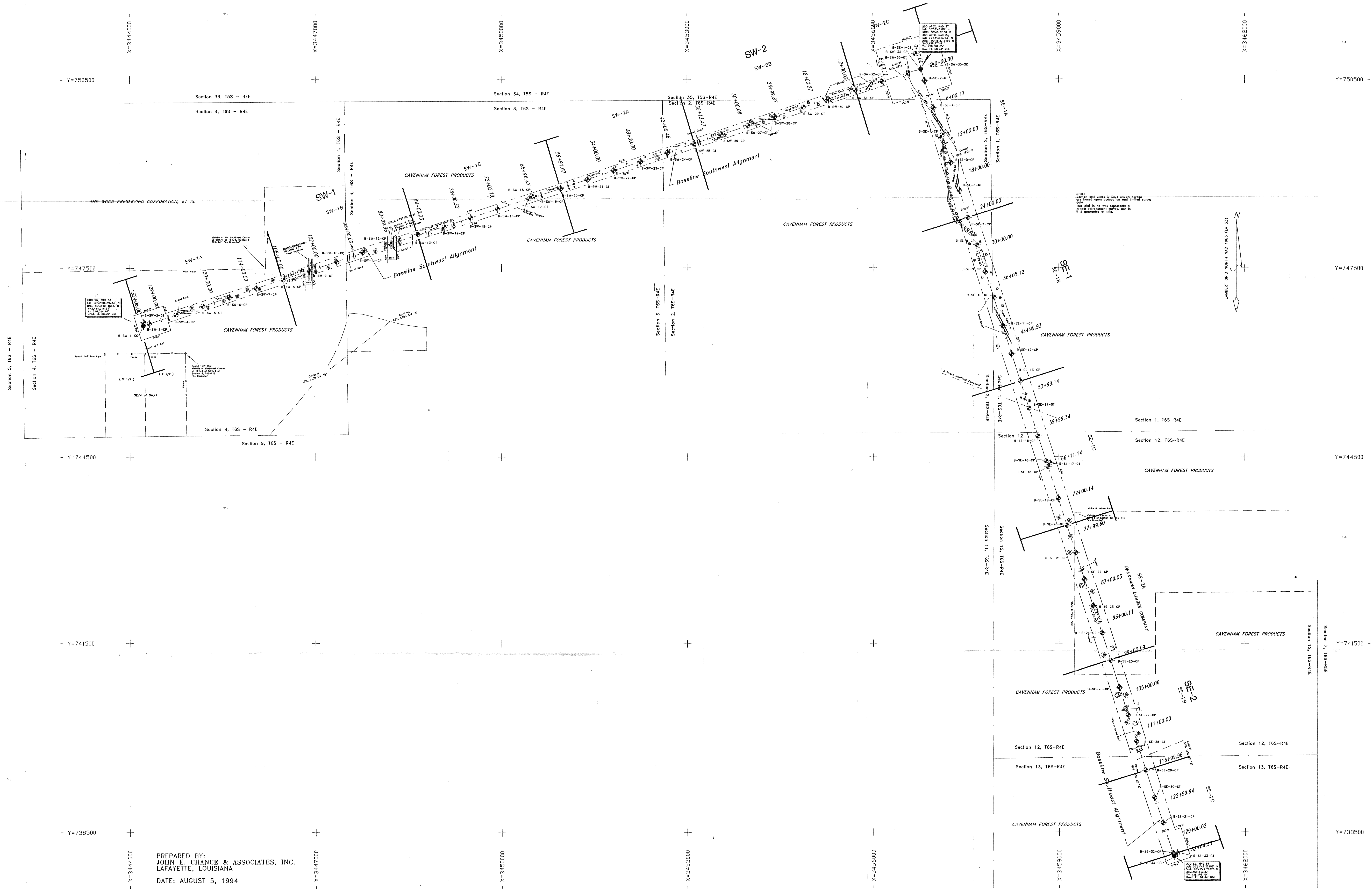
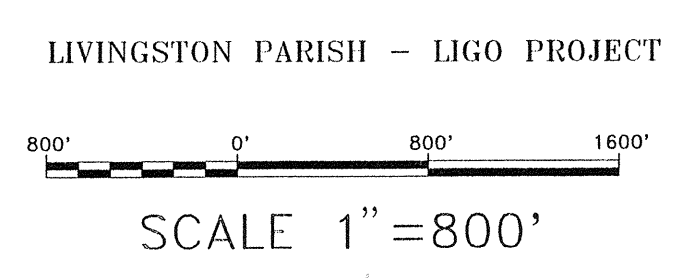


Location: Baton Rouge File name: K:\BROW\LIGO\46237A.DWG Last edited: 11/22/94 @ 15:33



PREPARED BY:
JOHN E. CHANCE & ASSOCIATES, INC.
LAFAYETTE, LOUISIANA
DATE: AUGUST 5, 1994

LOCATIONS OF BORINGS AND CPT TESTS



NO.	REVISION	DATE	INITIAL

LIGO

WOODWARD-CLYDE CONSULTANTS
Consulting Engineers, Geologists
and Environmental Scientists
Baton Rouge, Louisiana

CALIFORNIA INSTITUTE OF TECHNOLOGY
PASADENA, CALIFORNIA

SCALE: 1"=800'	MADE BY: PCG	DATE: 11/10/94	FILE NO. 93B107C
CHECKED BY: <i>A.R.</i>		DATE: 01/06/95	FIGURE A-2

BORING LOCATION DIAGRAM