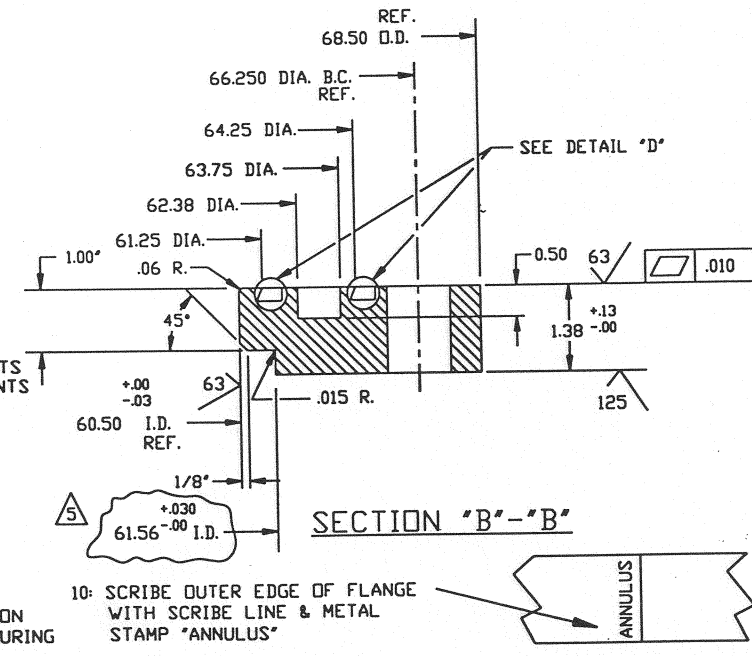
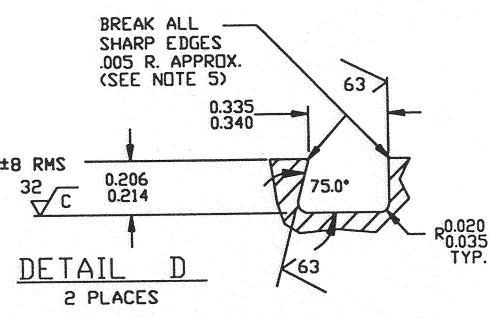
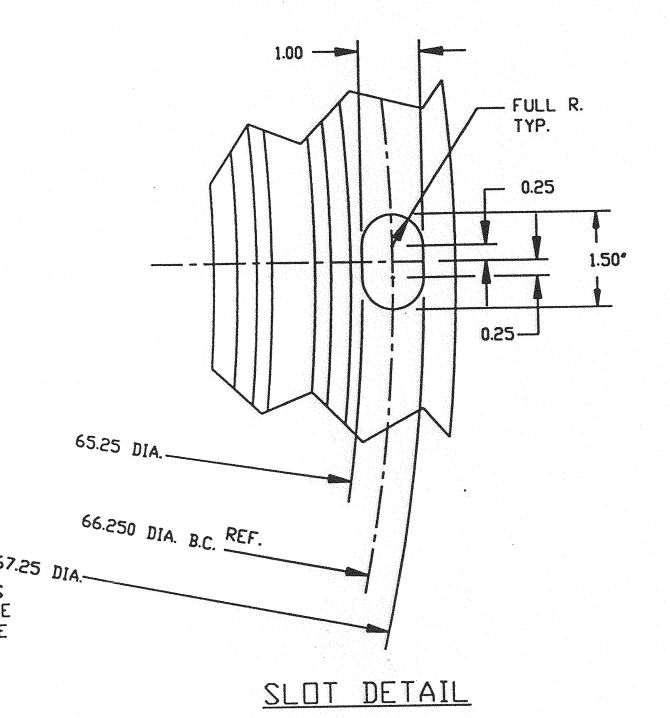
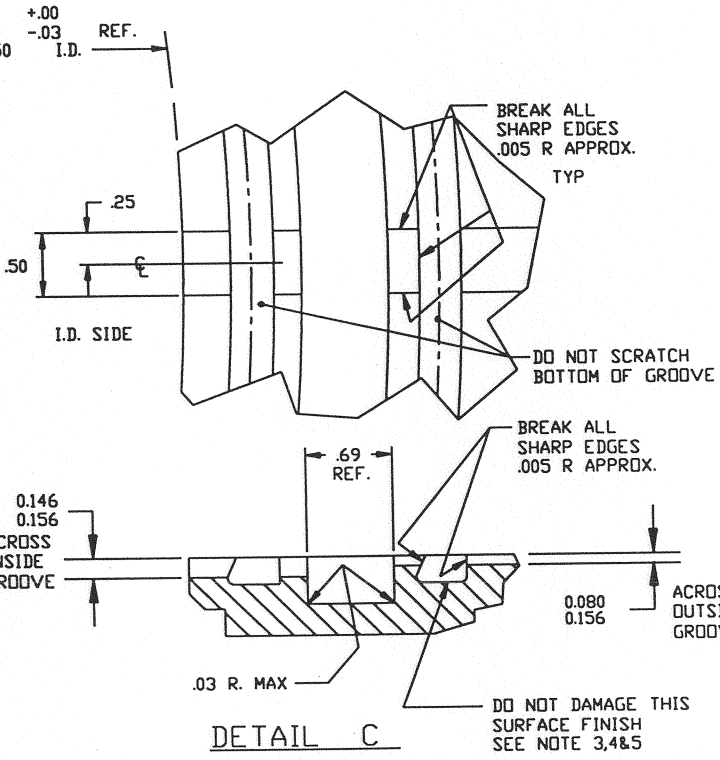
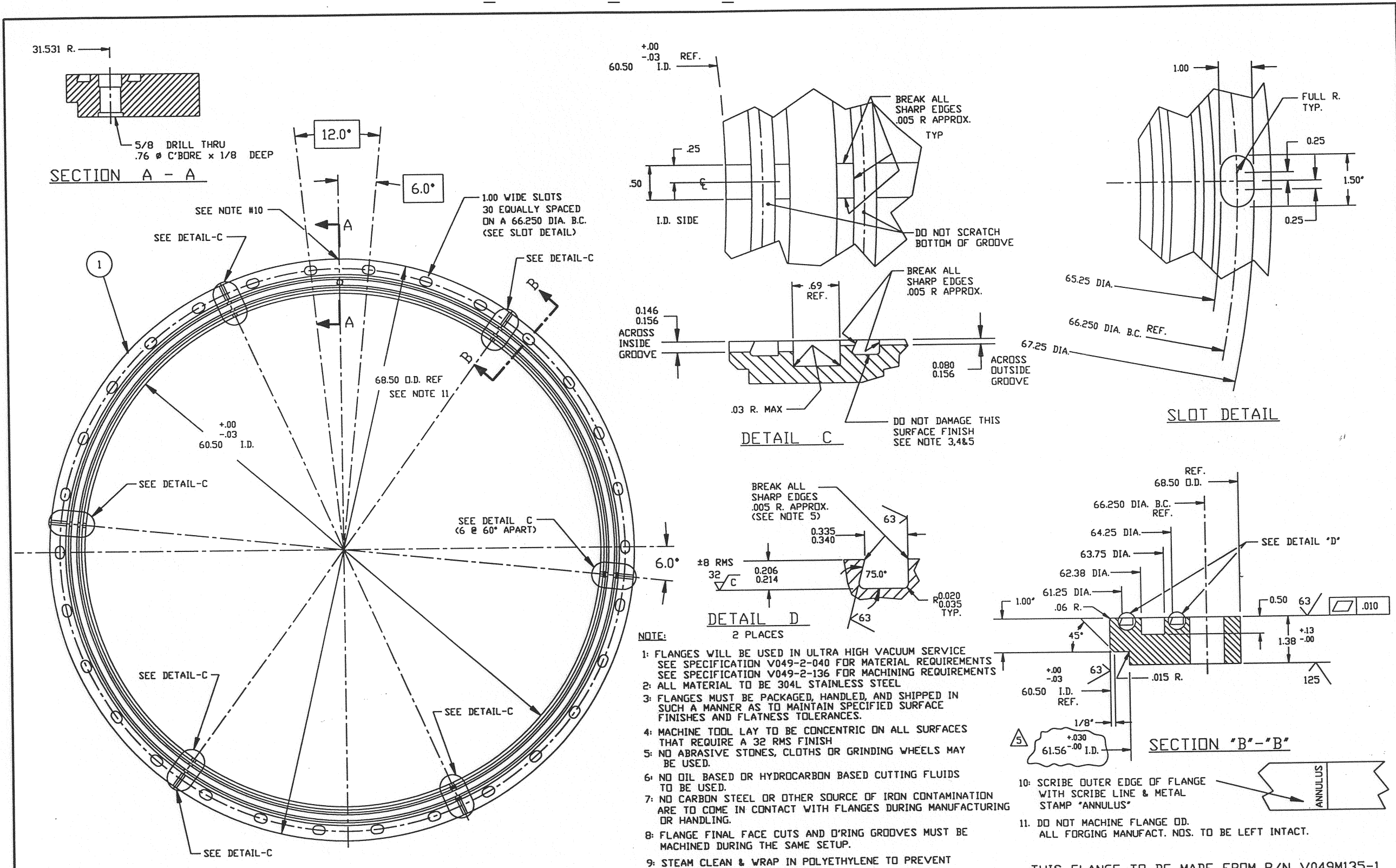
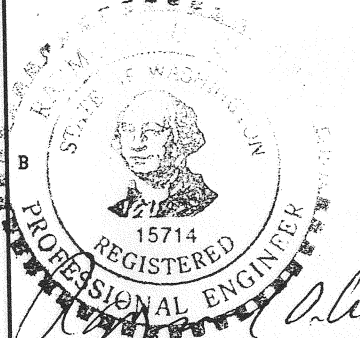
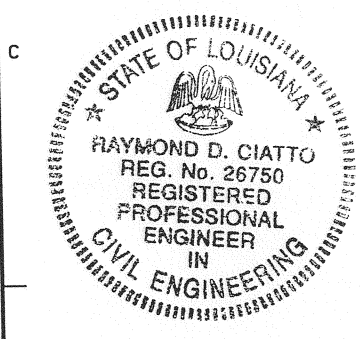


60.5 INCH FLANGE\_GROOVED\_SLOTTED\_ADVANCED LIGO # LIGO D961111-v1



- NOTE:
- 1: FLANGES WILL BE USED IN ULTRA HIGH VACUUM SERVICE SEE SPECIFICATION V049-2-040 FOR MATERIAL REQUIREMENTS SEE SPECIFICATION V049-2-136 FOR MACHINING REQUIREMENTS
  - 2: ALL MATERIAL TO BE 304L STAINLESS STEEL
  - 3: FLANGES MUST BE PACKAGED, HANDLED, AND SHIPPED IN SUCH A MANNER AS TO MAINTAIN SPECIFIED SURFACE FINISHES AND FLATNESS TOLERANCES.
  - 4: MACHINE TOOL LAY TO BE CONCENTRIC ON ALL SURFACES THAT REQUIRE A 32 RMS FINISH
  - 5: NO ABRASIVE STONES, CLOTHS OR GRINDING WHEELS MAY BE USED.
  - 6: NO OIL BASED OR HYDROCARBON BASED CUTTING FLUIDS TO BE USED.
  - 7: NO CARBON STEEL OR OTHER SOURCE OF IRON CONTAMINATION ARE TO COME IN CONTACT WITH FLANGES DURING MANUFACTURING OR HANDLING.
  - 8: FLANGE FINAL FACE CUTS AND O-RING GROOVES MUST BE MACHINED DURING THE SAME SETUP.
  - 9: STEAM CLEAN & WRAP IN POLYETHYLENE TO PREVENT CONTAMINATION DURING SHIPPING.



EXPIRES 9/5/97 1/2/97

INNER O-RING .275 DIA. STOCK x 191 1/4' LG. VULCANIZED - BAKED VITON E-60C  
 OUTER O-RING .275 DIA. STOCK x 200 5/8' LG. VULCANIZED - BAKED VITON E-60C

PROPRIETARY AND CONFIDENTIAL THIS DOCUMENT CONTAINS PROPRIETARY INFORMATION BELONGING TO PROCESS SYSTEMS INTERNATIONAL, INC. OR ITS AFFILIATED COMPANIES AND SHALL BE USED ONLY FOR THE PURPOSE FOR WHICH IT WAS SUPPLIED. IT SHALL NOT BE COPIED, REPRODUCED OR OTHERWISE USED, NOR SHALL SUCH INFORMATION BE FURNISHED IN WHOLE OR IN PART TO OTHERS EXCEPT IN ACCORDANCE WITH THE TERMS OF ANY AGREEMENT UNDER WHICH IT WAS SUPPLIED OR WITH THE PRIOR WRITTEN CONSENT OF PROCESS SYSTEMS INTERNATIONAL, INC. AND SHALL BE RETURNED UPON REQUEST.	UNLESS OTHERWISE SPECIFIED DIMENSIONS ARE IN INCHES TOLERANCES FRACTIONAL & 1/16" ANGULAR APPROX 12°-30° BOND 42° TWO PLACE DECIMAL & .000 THREE PLACE DECIMAL & .005 FINISHED SURFACE RMS 6.3 BREAK CORNERS .R40.00 OUT-GOING REMOVE ALL BURRS	5 REVISED FOR FABRICATION PER RFC V049-026	5	REVISED FOR FABRICATION PER RFC V049-026	DMV	PEF	RDC	REC	RH	11/23/96	0368	
		4 REISSUED FOR FABRICATION	4	REISSUED FOR FABRICATION	DMV	PEF	RDC	REC	DA	10/9/96	0294	
		3 ISSUED FOR FABRICATION	3	ISSUED FOR FABRICATION	PFH	PEF	GS	RDC	REC	PV	7/31/96	0200
		2 AS NOTED	2	AS NOTED		PEF		RDC	REC	PV	7/9/96	
		1 DESIGN UPDATE	1	DESIGN UPDATE		PEF		RDC	REC	DA	5/20/96	
	DO NOT SCALE THIS DWG.	0	ISSUED FOR FDR			DMV	RDC	REC	PV	4/25/96	0150	
DWG. NO.	DESCRIPTION	USED ON	REV.	DESCRIPTION					CHKD	DRAWN	DATE	DEC
	REFERENCE DRAWINGS	NEXT ASS'Y		ISSUE DESCRIPTION								

PROCESS SYSTEMS INTERNATIONAL, INC.  
 30 WALRUP DR. WESTBOROUGH, MASSACHUSETTS 01581 USA

60 1/2" I.D. FLANGE DETAIL  
 (HAM) GROOVED W/ SLOTS  
 LIGO VACUUM EQUIPMENT

CAD FILE V0494031 SIZE C DWG. NO. V049-4-031 REV. 5

SCALE 1 1/2"=1'-0" SHEET 1 OF 1

Oct 02, 1995 - 09:37:04

LIGO-D961111-05-V