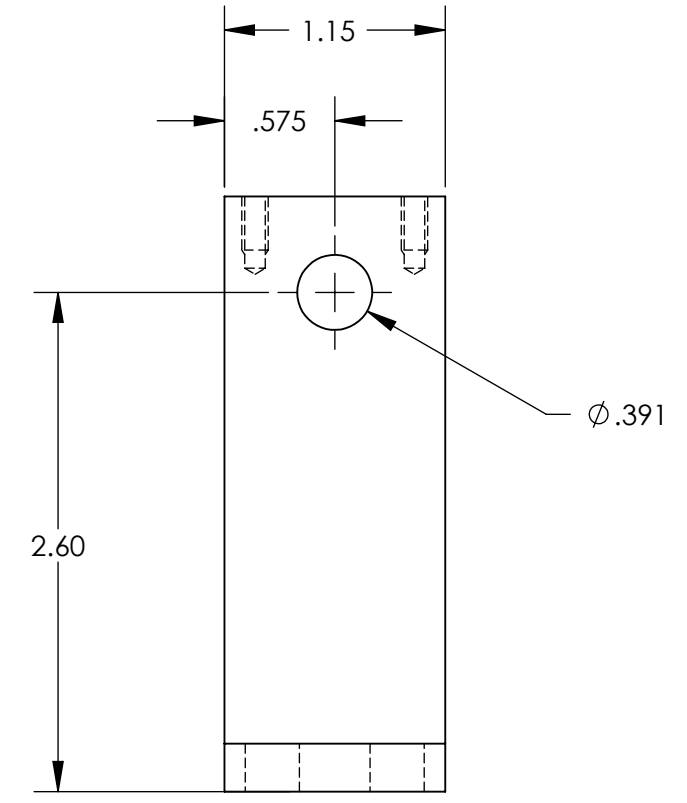
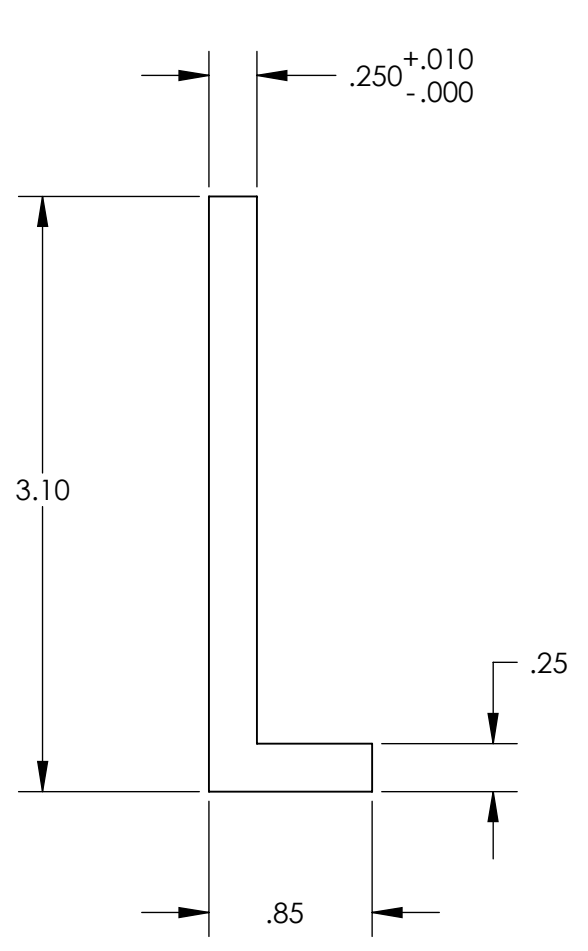
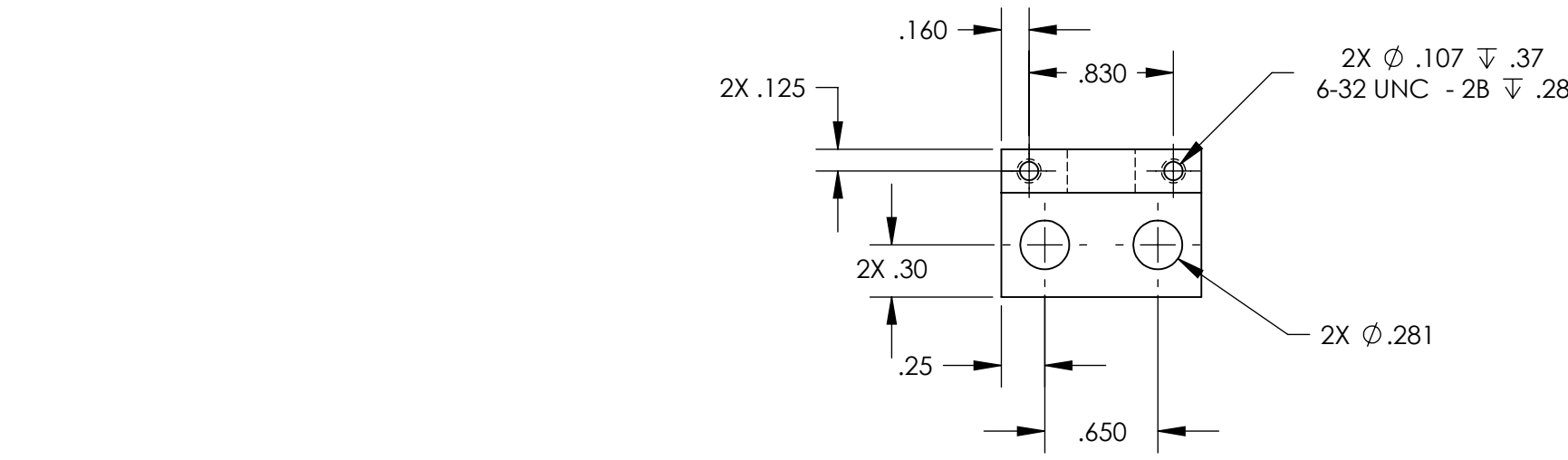


D0902752_AdlIGO_AOS_FID0902754_Picomotor Mounting Bracket, PART PDM REV.: , DRAWING PDM REV:

NOTES CONTINUED:
⑤ SCRIBE, ENGRAVE, OR MECHANICALLY STAMP (NO INKS OR DYES) DRAWING PART NUMBER AND REVISION ON NOTED SURFACE FOLLOWED ON THE NEXT LINE BY A THREE DIGIT SERIAL NUMBER. SERIAL NUMBERS START AT 001 FOR THE FIRST ARTICLE AND PROCEED CONSECUTIVELY. USE .07" HIGH CHARACTERS. EXAMPLE: DXXXXXX-VY, S/N 001.
A VIBRATORY TOOL MAY BE USED.

REV.	DATE	DCN #	DRAWING TREE #
-	-	-	-
-	-	-	-
-	-	-	-



NOTES AND TOLERANCES: (UNLESS OTHERWISE SPECIFIED)				LIGO CALIFORNIA INSTITUTE OF TECHNOLOGY MASSACHUSETTS INSTITUTE OF TECHNOLOGY		PART NAME	
DIMENSIONS ARE IN INCHES				ADVANCED LIGO		PICOMOTOR 8302 MTG BRACKET	
TOLERANCES: .XX ± .02 .XXX ± .010 ANGULAR ± 0.5°				SUB-SYSTEM AOS		DESIGNER	SIZE DWG. NO.
1. INTERPRET DRAWING PER ASME Y14.5-1994. 2. REMOVE ALL SHARP EDGES, R.02 MIN. 3. DO NOT SCALE FROM DRAWING. 4. ALL MACHINING FLUIDS MUST BE FULLY SYNTHETIC, FULLY WATER SOLUBLE AND FREE OF SULFUR, SILICONE, AND CHLORINE.				NEXT ASSY D0902754		DRAFTER N.Nguyen.391	B D0902752
MATERIAL 6061-T6 Al				FINISH μ inch		CHECKER	REV.
						APPROVAL	SCALE: 1:1 PROJECTION: SHEET 1 OF 1