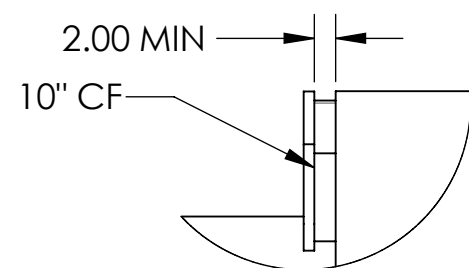


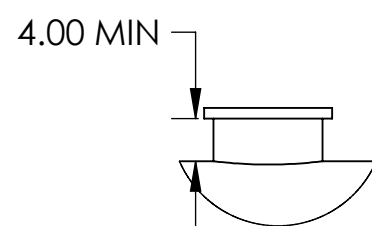
NOTES CONTINUED:  
 ⑤ SCRIBE, ENGRAVE, OR MECHANICALLY STAMP (NO INKS OR DYES) DRAWING PART NUMBER AND REVISION ON NOTED SURFACE FOLLOWED ON THE NEXT LINE BY A THREE DIGIT SERIAL NUMBER. SERIAL NUMBERS START AT 001 FOR THE FIRST ARTICLE AND PROCEED CONSECUTIVELY. USE .07" HIGH CHARACTERS. EXAMPLE: DXXXXXXX-VY, S/N 001. A VIBRATORY TOOL MAY BE USED.

Estimated Weight:  
6500 lbs

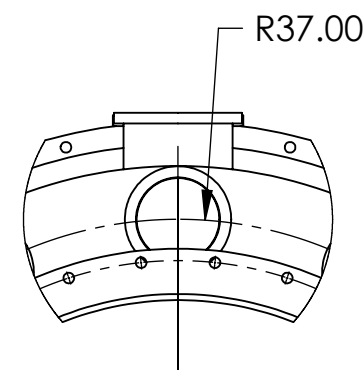
REV.	DATE	DCN #	DRAWING TREE #
-	-	-	-
-	-	-	-
-	-	-	-



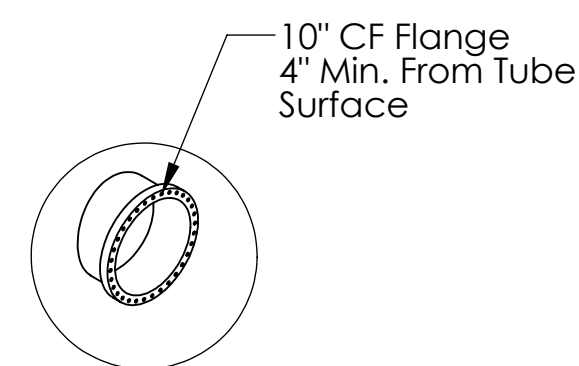
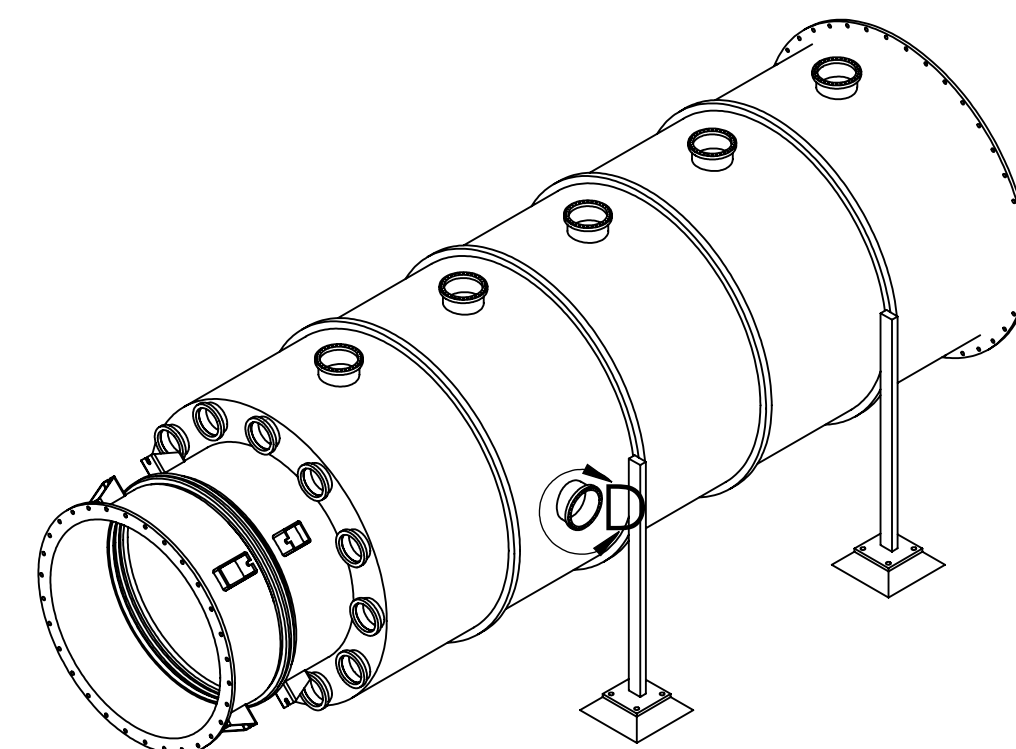
DETAIL A  
SCALE 1 : 18



DETAIL B  
SCALE 1 : 18



DETAIL C  
SCALE 1 : 18



DETAIL D  
SCALE 1 : 18

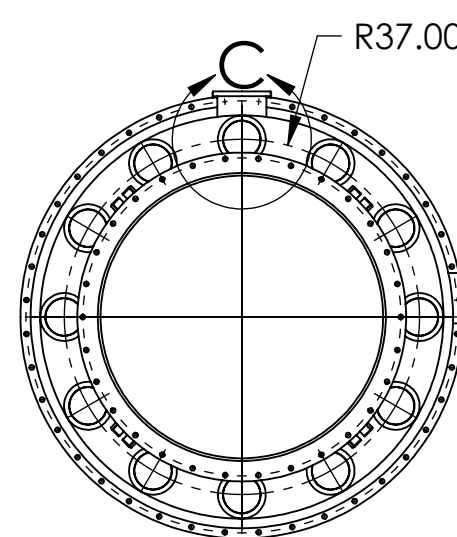
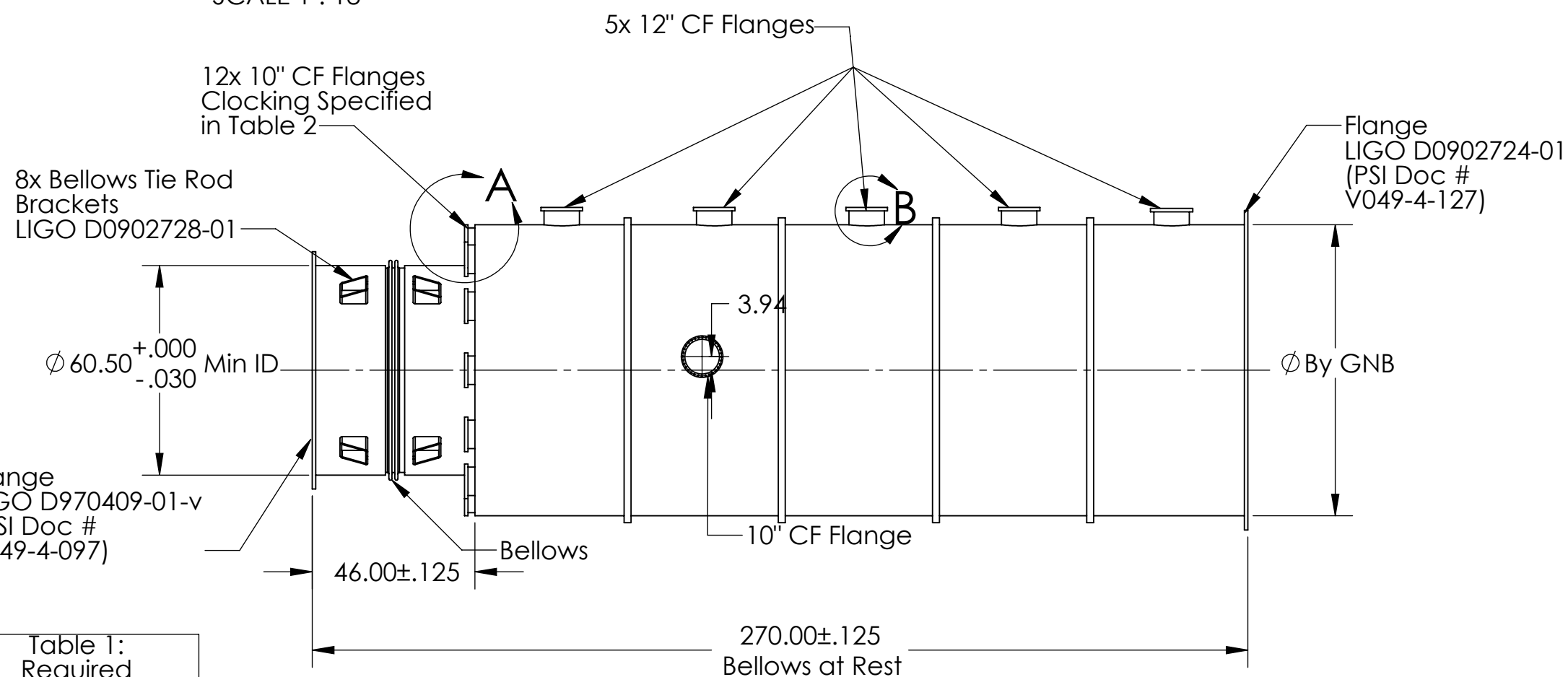
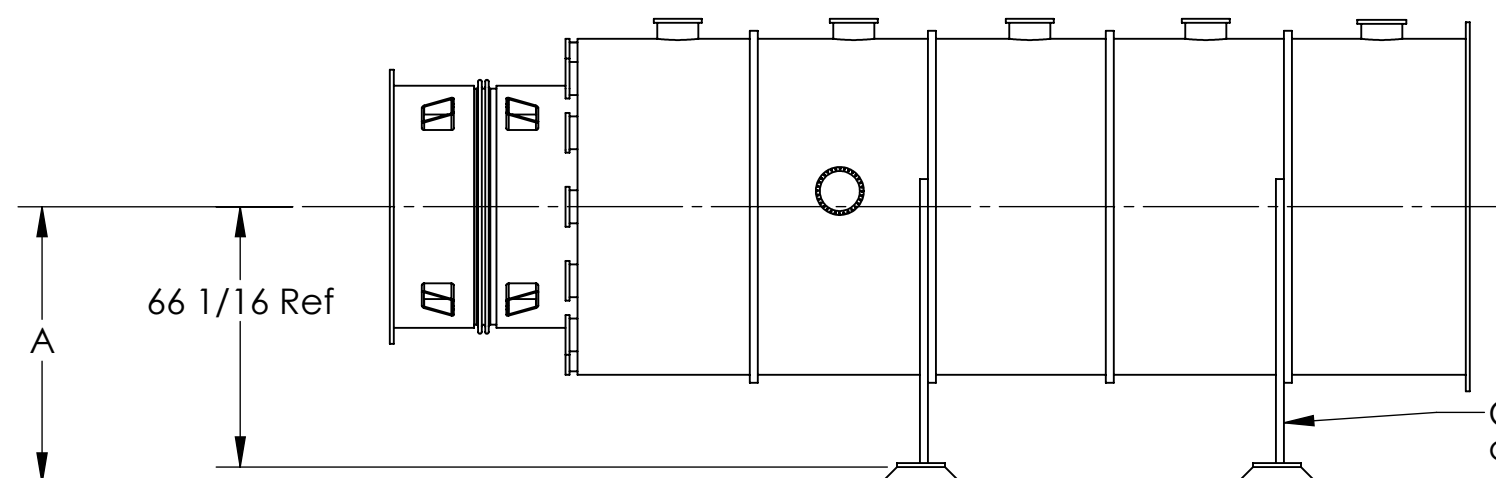


Table 1: Required Tag Numbers	
LAMCA1	
LAMCA2	
WAMCA1	
WAMCA2	
WAMCA3	
WAMCA4	

Table 2: Viewport Clocking 12 o'clock = 0°	
Hole Position	LAMCA# WAMCA#
1	30°
2	60°
3	90°
4	120°
5	150°
6	180°
7	210°
8	240°
9	270°
10	300°
11	330°
12	360°

Tag No.	Dim. A
LAMCA#	69 1/16 Ref
WAMCA#	70 1/16 Ref



Component Legs, Stiffeners and Anchor Pads to be sized and located by the Seller. General locations shown.

NOTES AND TOLERANCES: (UNLESS OTHERWISE SPECIFIED)

- INTERPRET DRAWING PER ASME Y14.5-1994.
- REMOVE ALL SHARP EDGES, R.02 MIN.
- DO NOT SCALE FROM DRAWING.
- ALL MACHINING FLUIDS SHALL BE WATER SOLUBLE AND FREE OF SULFUR, CHLORINE AND SILICONE, SUCH AS CINCINNATI MILACRON'S CIMTECH 410.

MATERIAL: AISI 304  
 FINISH: μinch

**LIGO** CALIFORNIA INSTITUTE OF TECHNOLOGY  
 MASSACHUSETTS INSTITUTE OF TECHNOLOGY

SYSTEM: FMP  
 SUB-SYSTEM: VE  
 NEXT ASSY:

PART NAME: ADLIGO MCA TUBE SECTION

DESIGNER: [ ]  
 DRAFTER: [ ]  
 CHECKER: [ ]  
 APPROVAL: [ ]  
 SIZE: c  
 DWG. NO.: D0902632  
 REV.: 7  
 SCALE: 1:48  
 PROJECTION: [ ]  
 SHEET 1 OF 1