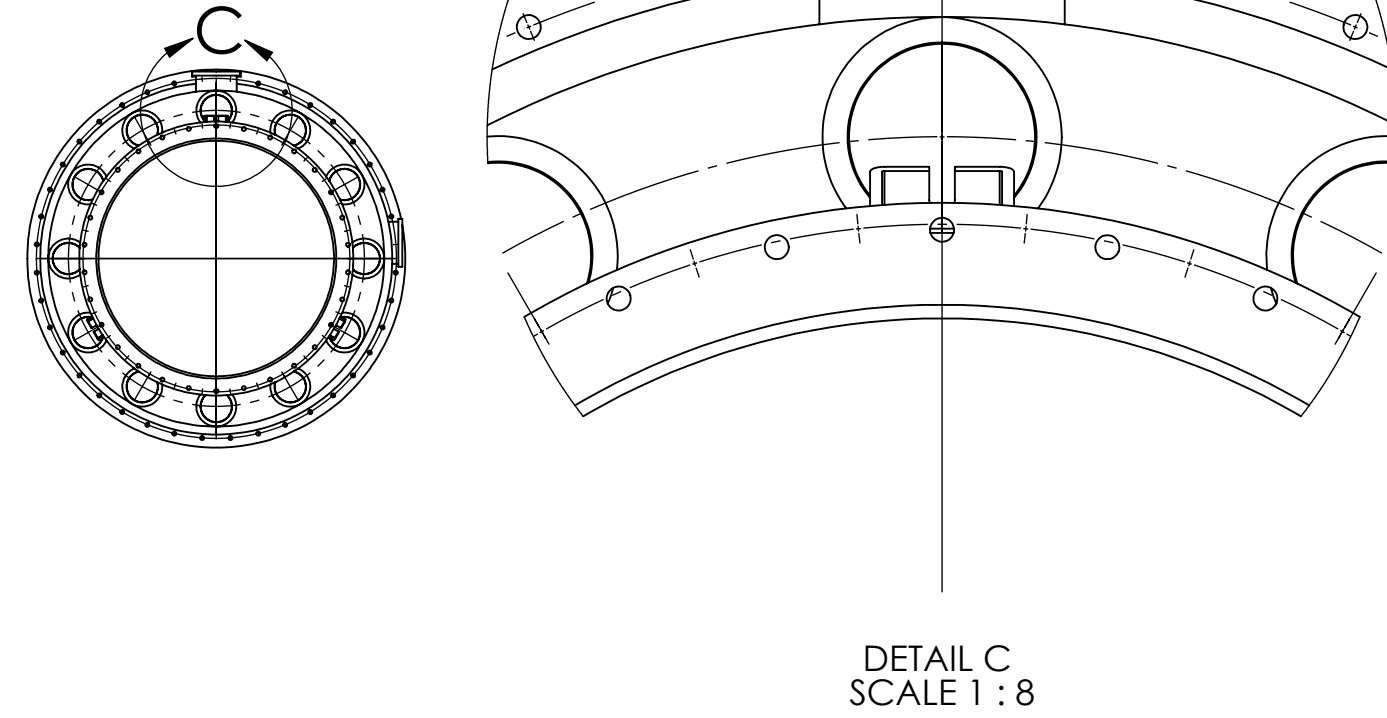
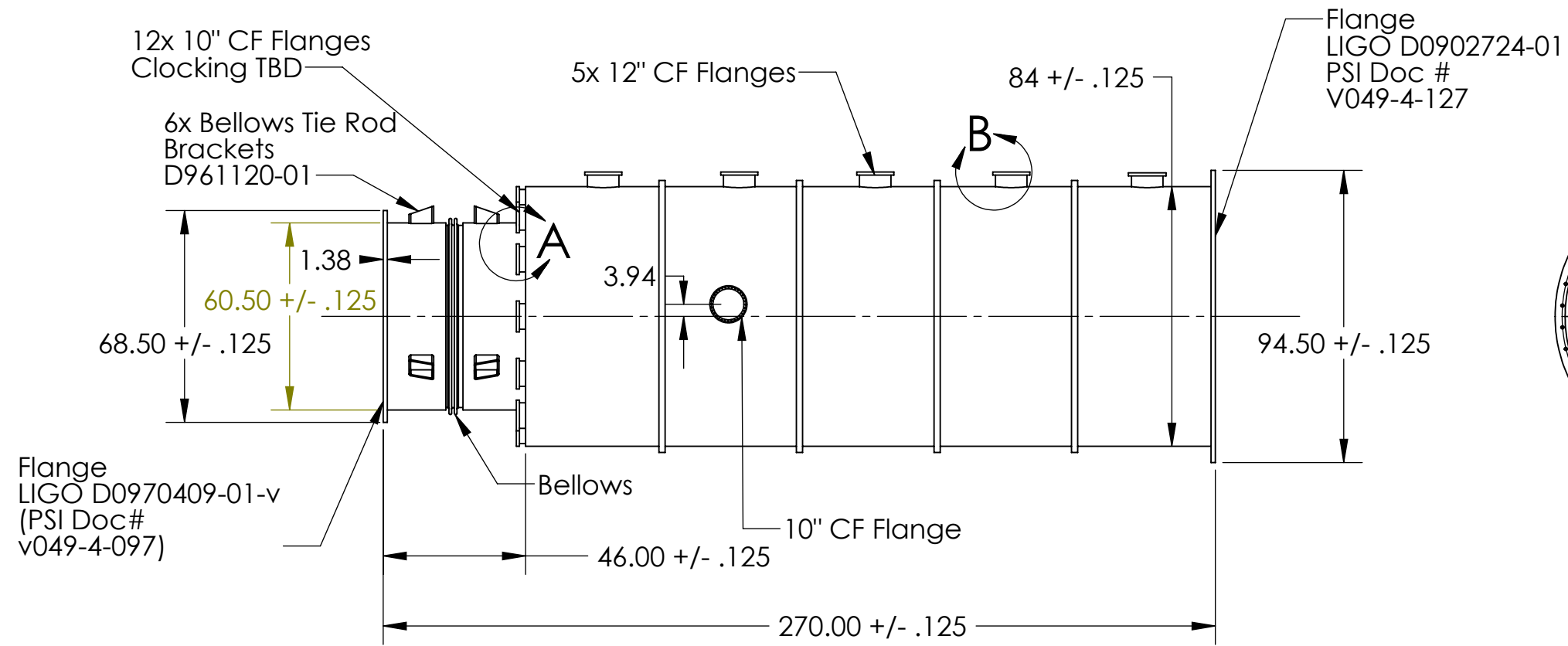
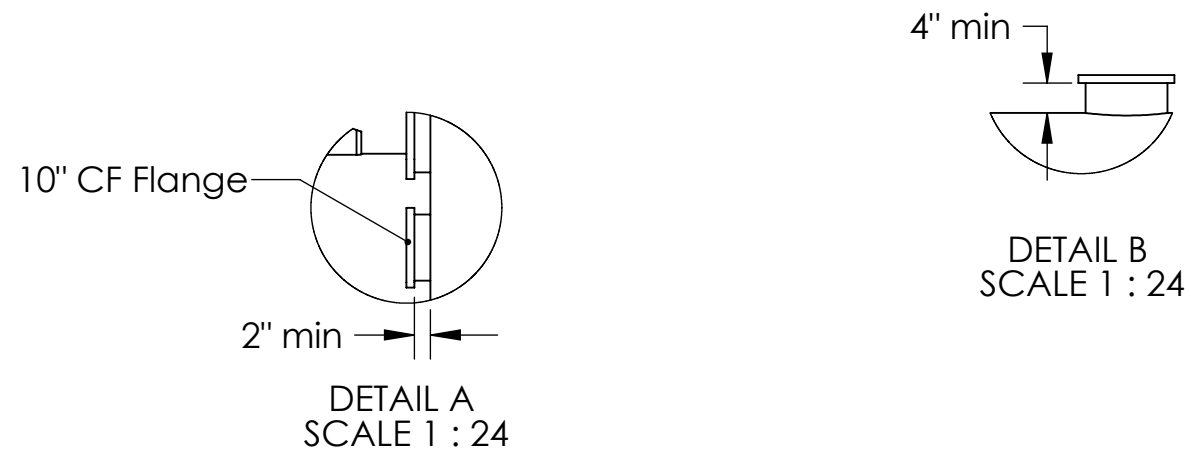
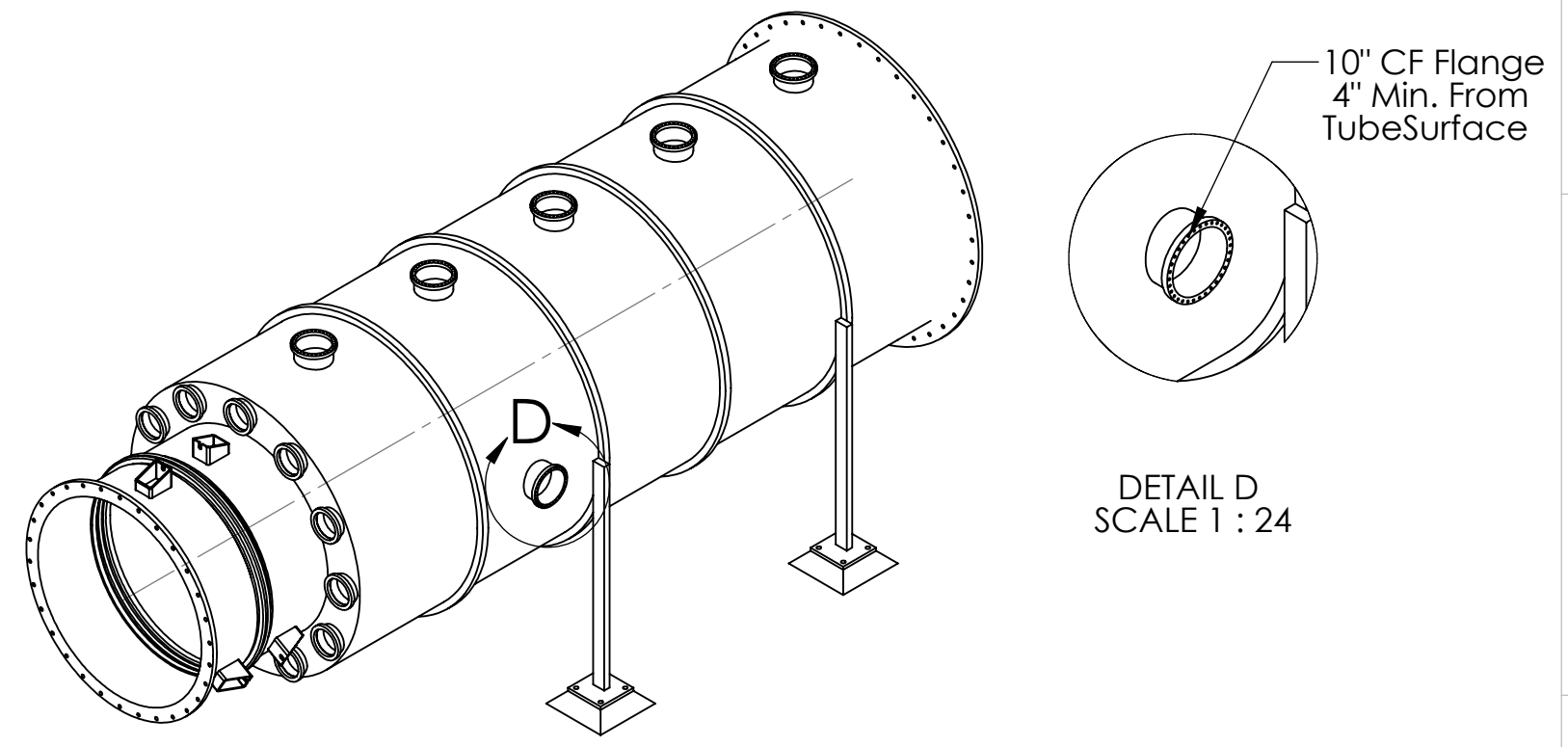
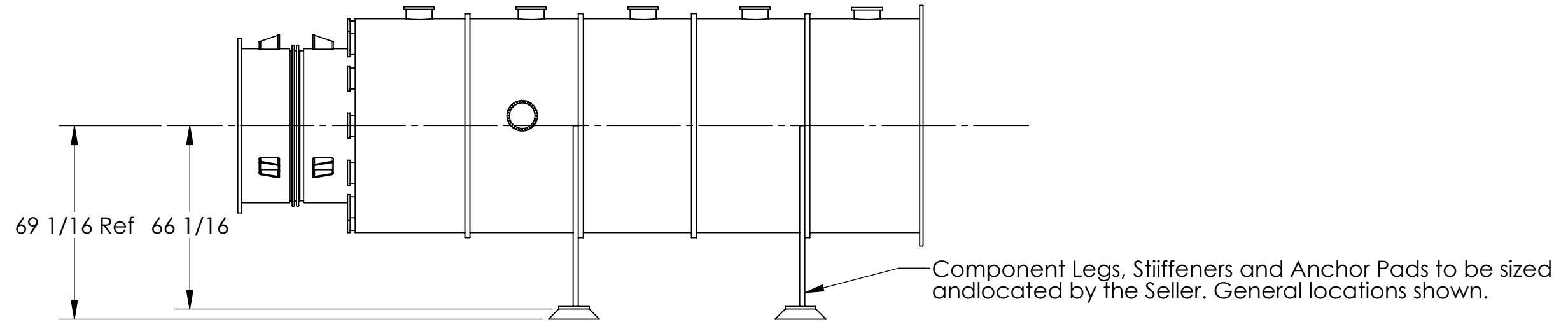


NOTES CONTINUED:
 ⑤ SCRIBE, ENGRAVE, OR MECHANICALLY STAMP (NO INKS OR DYES) DRAWING PART NUMBER AND REVISION ON NOTED SURFACE FOLLOWED ON THE NEXT LINE BY A THREE DIGIT SERIAL NUMBER. SERIAL NUMBERS START AT 001 FOR THE FIRST ARTICLE AND PROCEED CONSECUTIVELY. USE .07" HIGH CHARACTERS. EXAMPLE: DXXXXXXX-VY, S/N 001. A VIBRATORY TOOL MAY BE USED.

REV.	DATE	DCN #	DRAWING TREE #
-	-	-	-
-	-	-	-
-	-	-	-



6 Required, Tag Numbers	
WAMCA1	
WAMCA2	
WAMCA3	
WAMCA4	
LAMCA1	
LAMCA2	



NOTES AND TOLERANCES: (UNLESS OTHERWISE SPECIFIED)
 1. REMOVE ALL SHARP EDGES, R.02 MIN.
 2. DO NOT SCALE FROM DRAWING.
 3. DESIGN AND FABRICATE THIS COMPONENT PER LIGO SPECIFICATION E0900411-V1

MATERIAL: AISI 304
 FINISH: μinch

LIGO CALIFORNIA INSTITUTE OF TECHNOLOGY
 MASSACHUSETTS INSTITUTE OF TECHNOLOGY

SYSTEM: SUB-SYSTEM:
 NEXT ASSY:

PART NAME: **ADLIGO MCA TUBE SECTION**

DESIGNER	SIZE	DWG. NO.	REV.
DRAFTER	c	D0902632-V4	
CHECKER	SCALE: 1:48	PROJECTION:	SHEET 1 OF 1
APPROVAL			