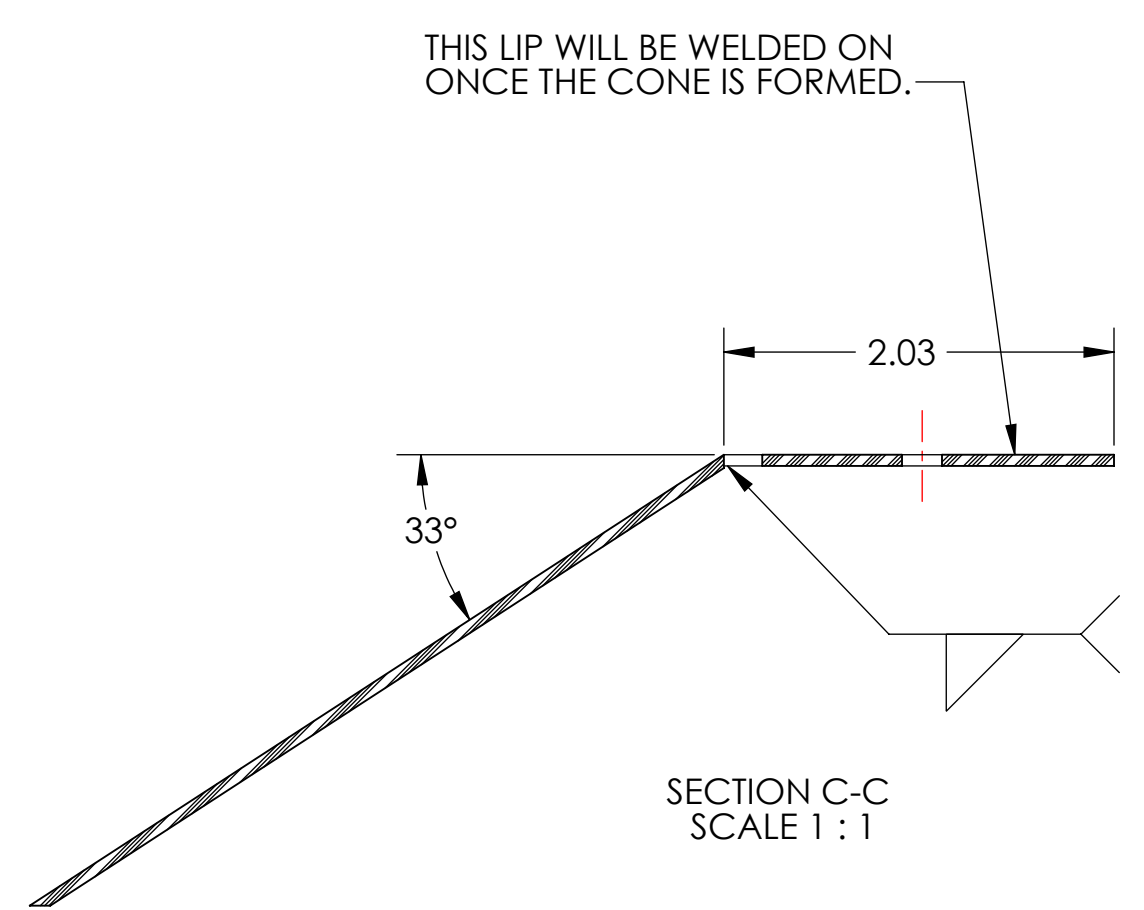
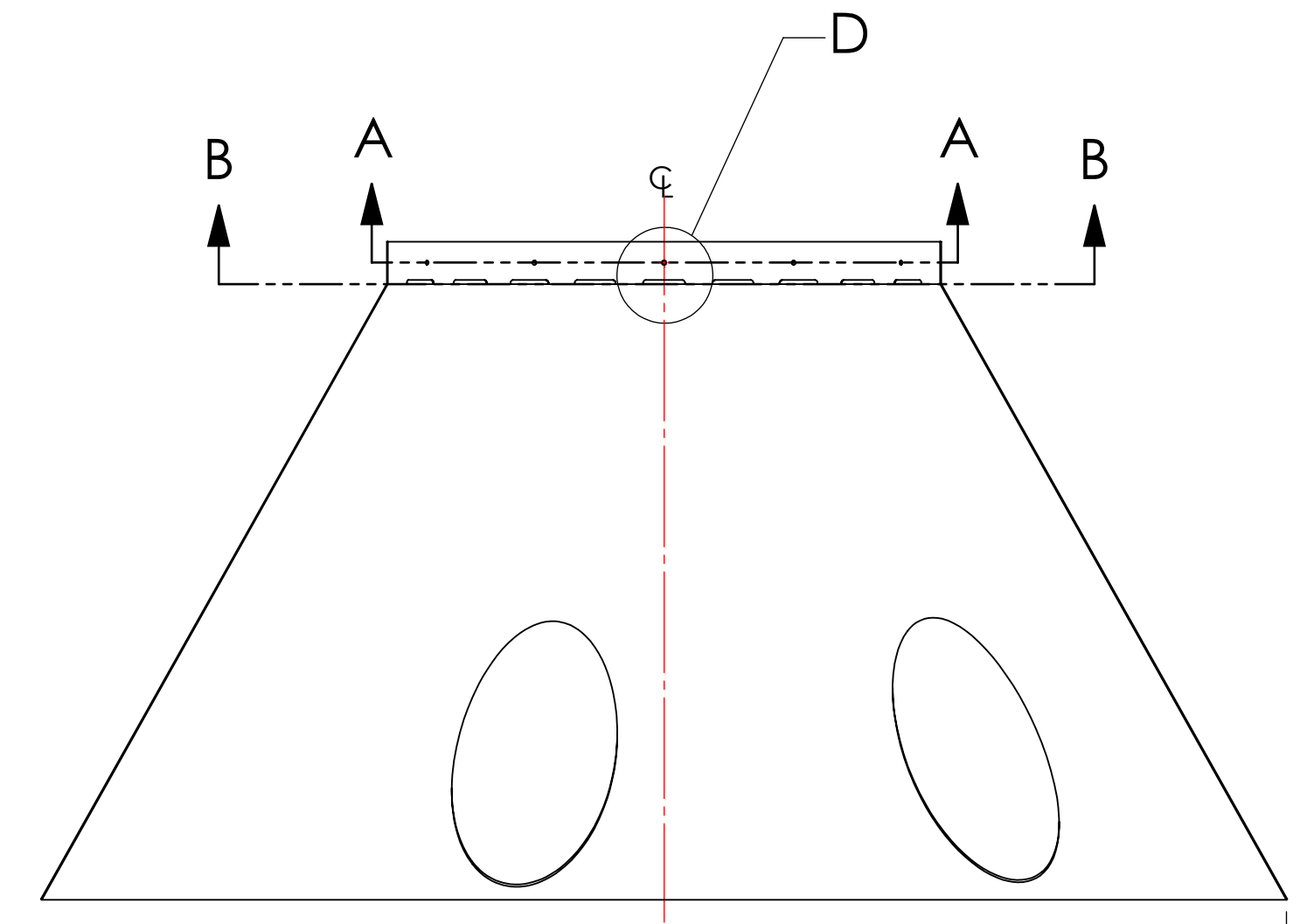
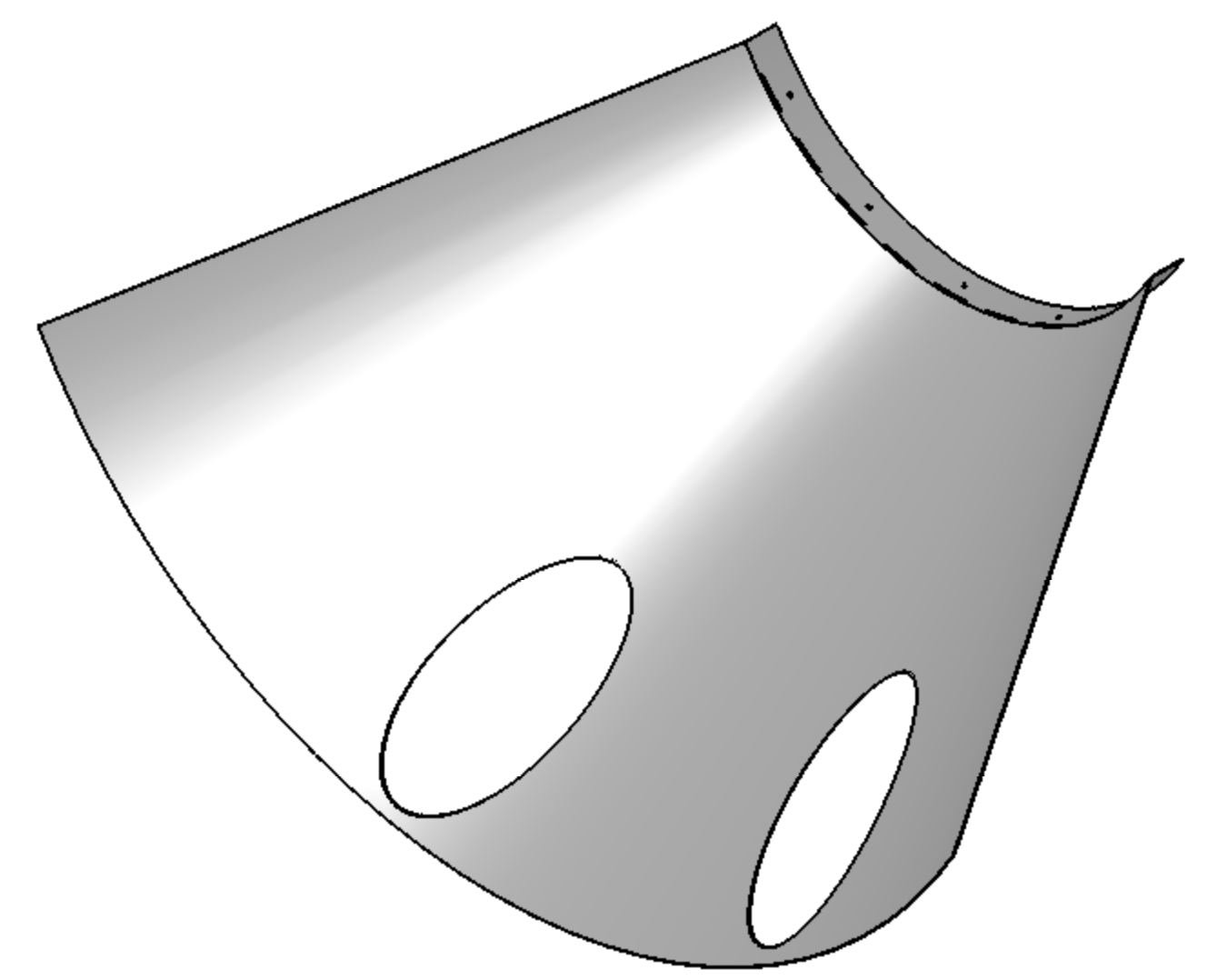
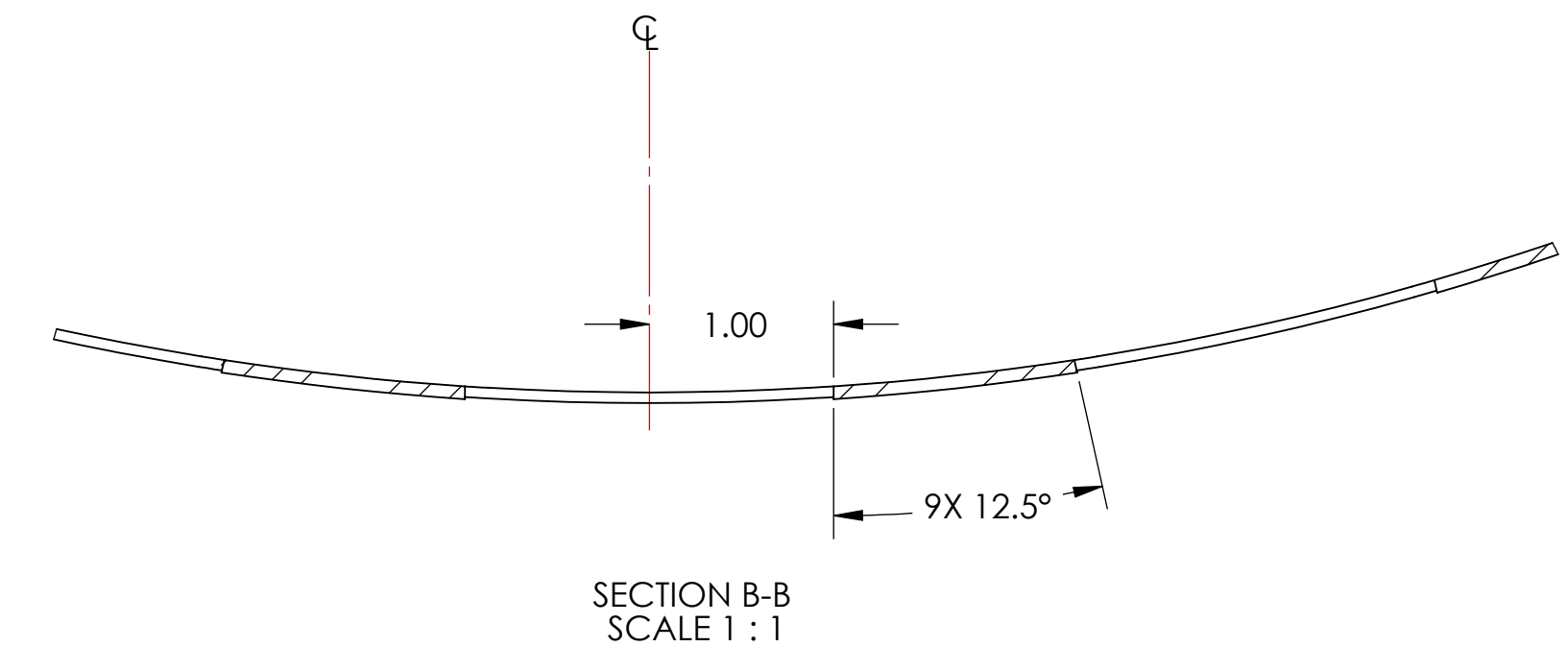
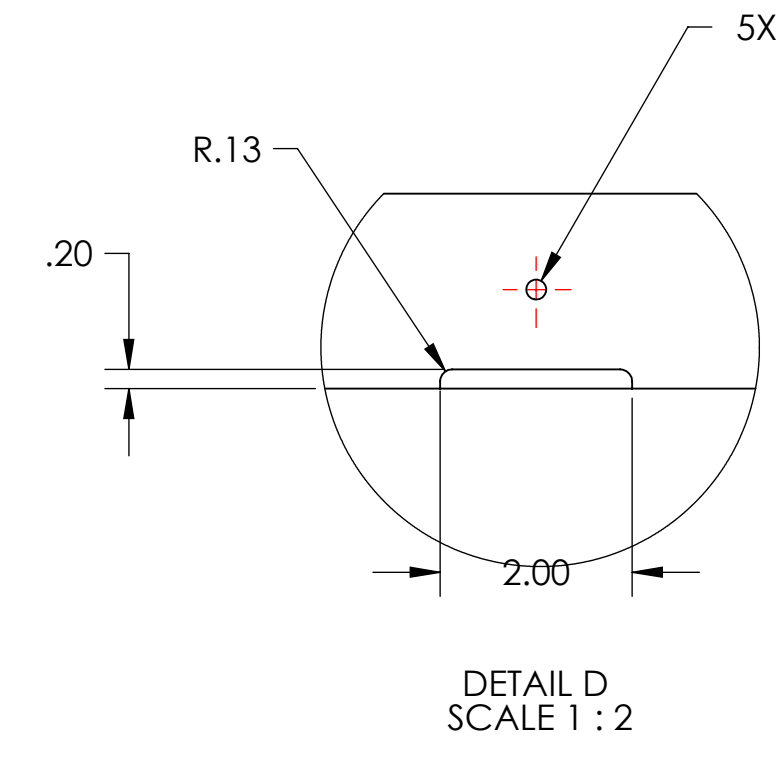


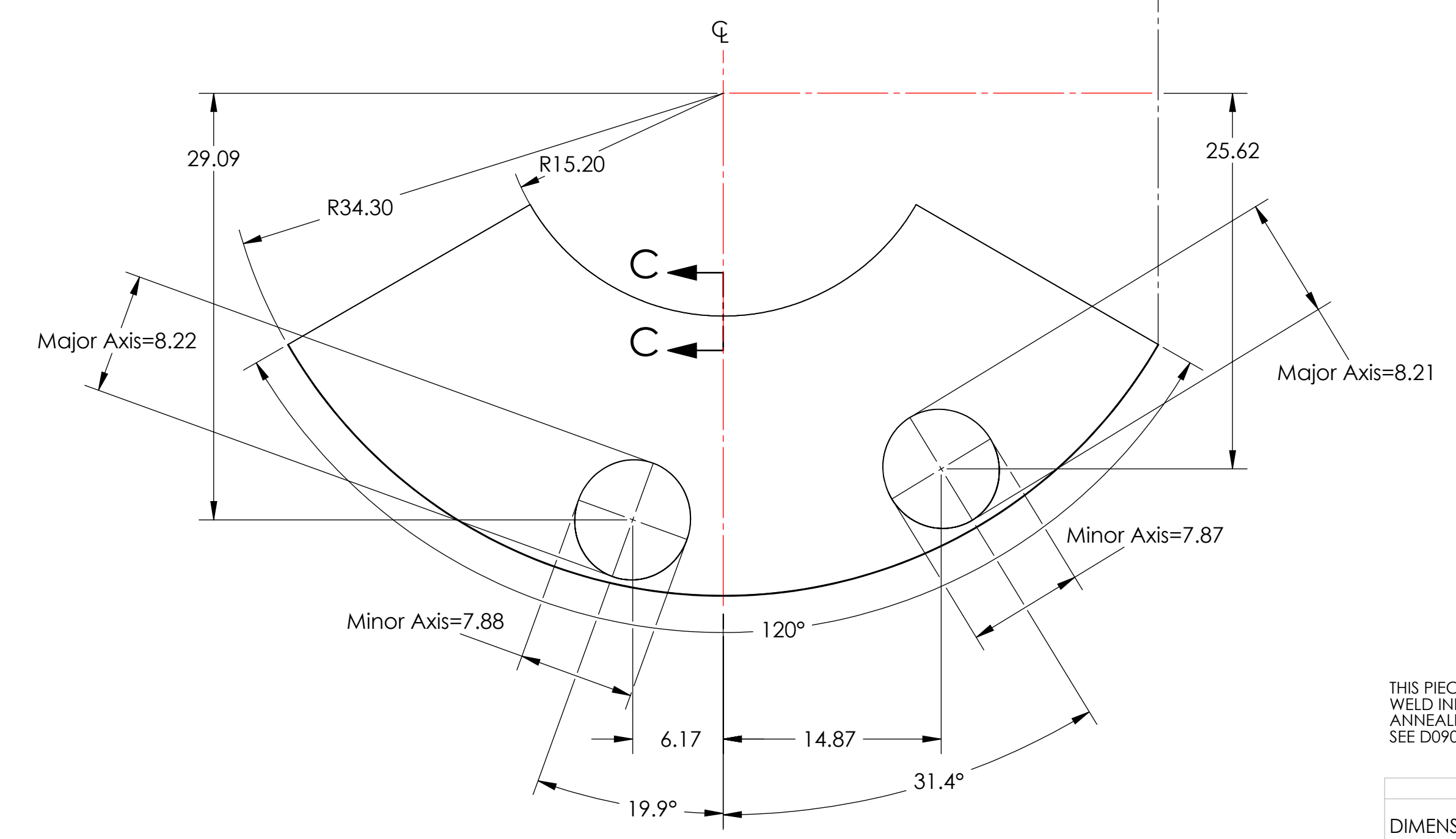
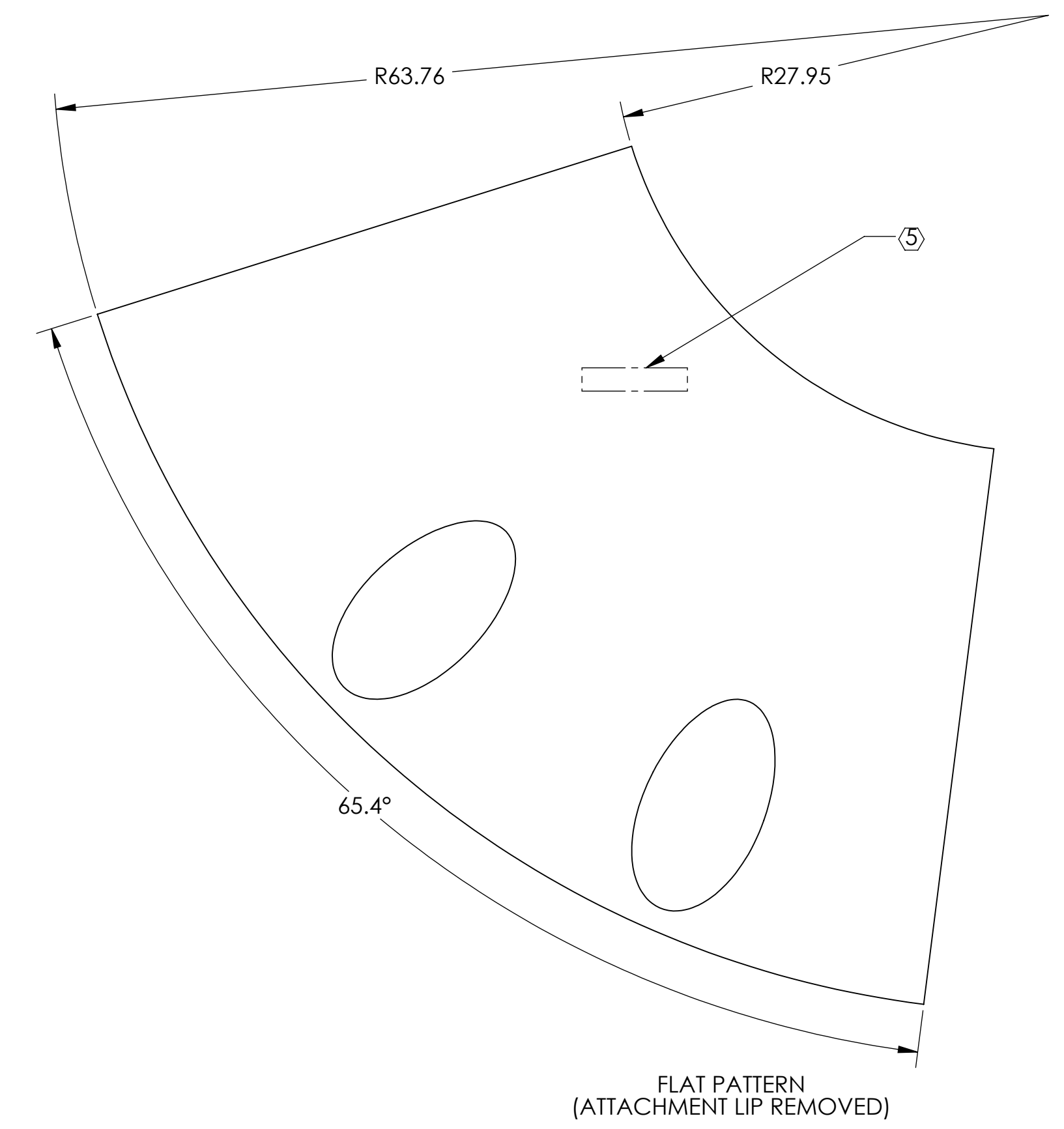
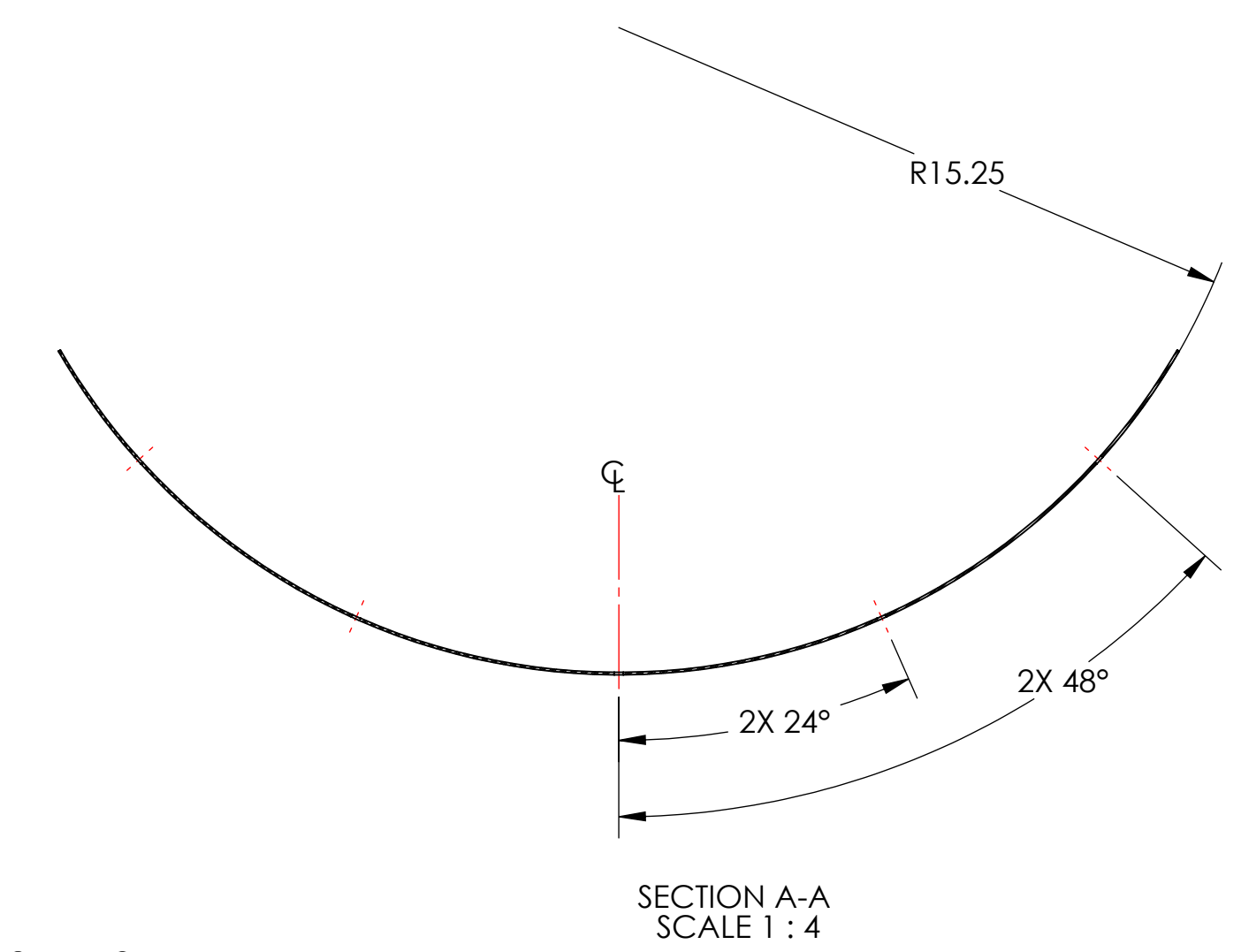
**NOTES CONTINUED:**  
 ⑤ SCRIBE, ENGRAVE (A VIBRATORY TOOL MAY BE USED), LASER MARK OR MECHANICALLY STAMP (NO INKS OR DYES) DRAWING PART NUMBER, REVISION (AND VARIANT OR "TYPE" IF APPLICABLE) ON NOTED SURFACE OF PART FOLLOWED ON THE NEXT LINE WITH A THREE DIGIT SERIAL NUMBER. SERIAL NUMBERS START AT 001 FOR THE FIRST ARTICLE AND PROCEED CONSECUTIVELY. USE MINIMUM 0.12" HIGH CHARACTERS, UNLESS THE SIZE OF THE PART DICTATES SMALLER CHARACTERS. EXAMPLE: DXXXXXX-VY, TYPE-XX, S/N XXX

- ⑥ ASSY TO BE PORCELAIN COATED AFTER WELDMENT IS COMPLETED.
- ⑦ CONE AND LIP TO BE WELDED WHERE PIECES MAKE CONTACT.
- ⑧ MATERIAL AS RECEIVED MACHINE FINISH

REV.	DATE	DCN #	DRAWING TREE #
v1	07 SEP 2010	E1000360	E1000090
v2	11 MAY 2011	E1000360-v2	-
-	-	-	-



10 PLS



THIS PIECE IS PART OF A WELDMENT. DIMENSIONS SHOWN ARE APPROXIMATE; WELD INDUCED SHRINKAGE OR FILL, AND POST WELD ANNEALING AND MACHINING CONSIDERATIONS ARE NOT INCLUDED. SEE D0902654 FOR REQUIRED DIMENSIONS FOR STRUCTURE AFTER WELDMENT.

NOTES AND TOLERANCES: (UNLESS OTHERWISE SPECIFIED)	
DIMENSIONS ARE IN INCHES	
TOLERANCES: .XX ± .03 .XXX ± .010	
ANGULAR ± 1.0°	
MATERIAL	FINISH
18GA A424 TYPE I STEEL	⑧

CALIFORNIA INSTITUTE OF TECHNOLOGY MASSACHUSETTS INSTITUTE OF TECHNOLOGY	SYSTEM <b>ADVANCED LIGO</b>	SUB-SYSTEM <b>AOS</b>
	NEXT ASSY D0902656	

PART NAME <b>MANIFOLD-CRYO BAFFLE INNER SEGMENT WELDMENT, ITMX H1-H2, LEFT</b>		DESIGNER H. KELMAN	DATE 12 MAY 2010	SIZE D	DWG. NO. <b>D0902622</b>	REV. v2
DRAFTER TQ. NGUYEN	DATE 17 AUG 2010	CHECKER M. SMITH	DATE 27 SEP 2010	APPROVAL D. COYNE	SCALE: 1:8	PROJECTION:
SHEET 1 OF 1						