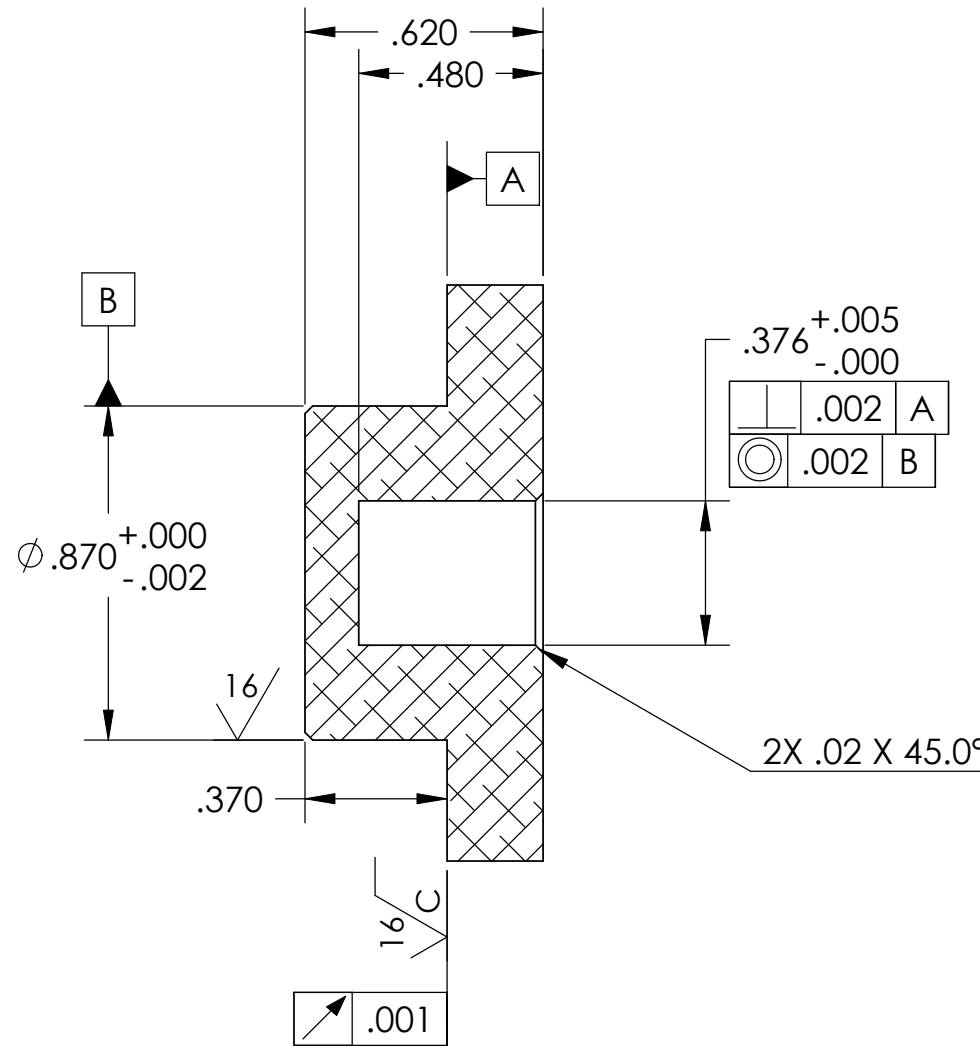
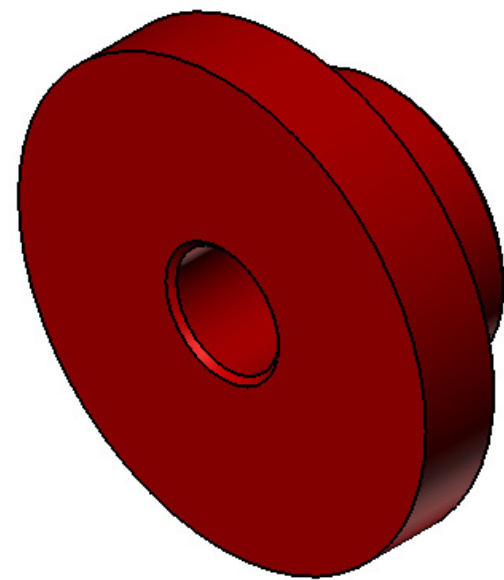
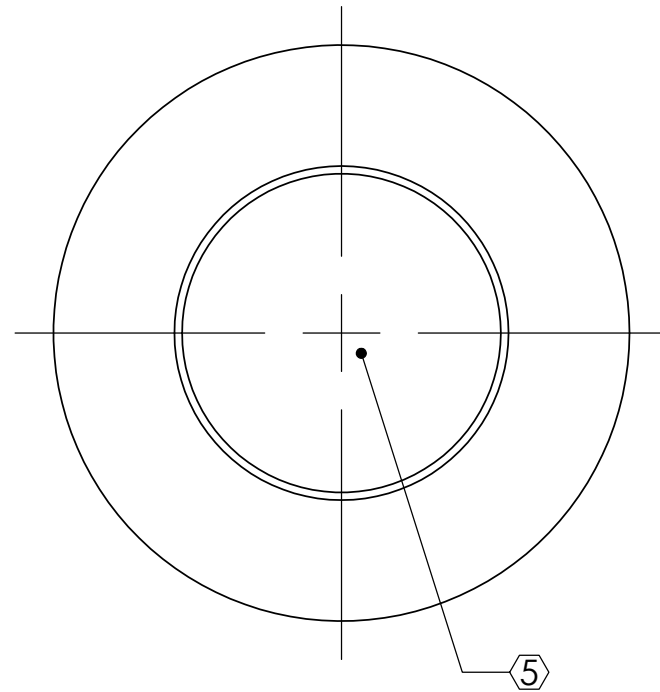


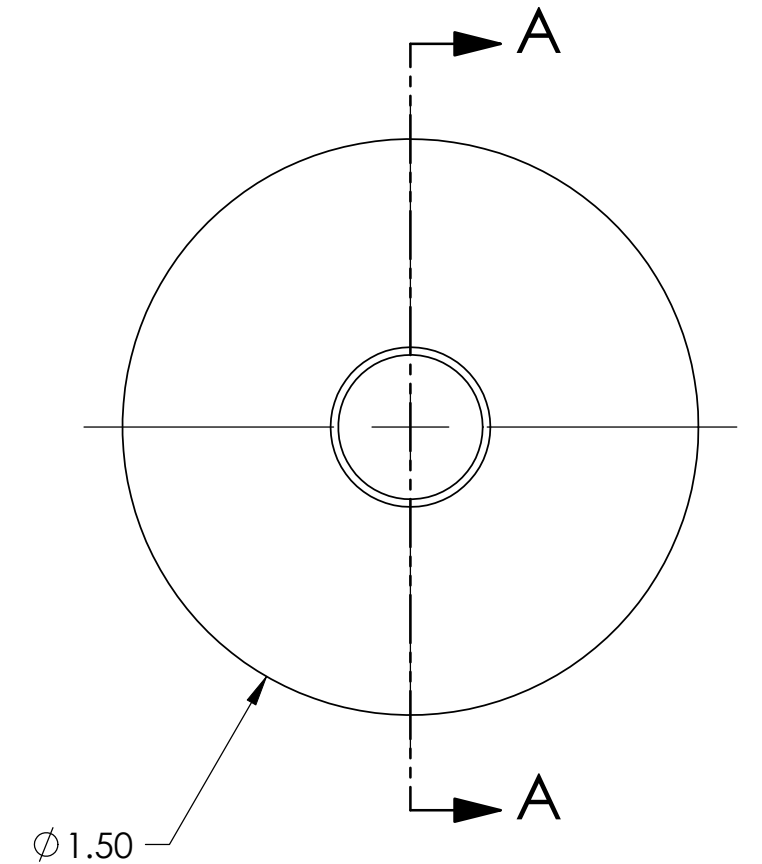
D0902603 Bolt Cap, Stage 0-1 Blade Pusher, aLIGO BSC-ISI, PART PDM REV: X-005, DRAWING PDM REV: X-004

REV.	DATE	DCN #	DRAWING TREE #
v1	14 FEB 2010	E1000028	E1000025

NOTES CONTINUED:
 5. SCRIBE, ENGRAVE, OR MECHANICALLY STAMP (NO DYES OR INKS) A UNIQUE THREE DIGIT SERIAL NUMBER & REVISION NUMBER ON EACH PART. SERIAL NUMBERS START AT 001 FOR THE FIRST ARTICLE AND PROCEED CONSECUTIVELY. BAG AND TAG PARTS WITH THEIR DRAWING PART NUMBER, REVISION, VARIANT OR "TYPE" (IF APPLICABLE), AND QUANTITY, IF PARTS ARE TOO SMALL TO SCRIBE. BAGGING AND TAGGING ALONE IS SUFFICIENT.
 EXAMPLE (PART): 001-v1
 EXAMPLE (TAG): DXXXXXX-VY, TYPE-XX, QTY: TBD
 6. ALL PARTS SHALL BE MANUFACTURED IN ACCORDANCE WITH LIGO SPECIFICATION E0900364.
 7. APPROXIMATE WEIGHT: 0.2LB.
 8. MACHINE ALL SURFACES TO REMOVE OXIDES AND MILL FINISH.
 9. ABRASIVE REMOVAL TECHNIQUES ARE NOT ACCEPTABLE.



SECTION A-A



NOTES AND TOLERANCES: (UNLESS OTHERWISE SPECIFIED)				LIGO CALIFORNIA INSTITUTE OF TECHNOLOGY MASSACHUSETTS INSTITUTE OF TECHNOLOGY		PART NAME					
DIMENSIONS ARE IN INCHES		1. INTERPRET DRAWING PER ASME Y14.5-1994. 2. REMOVE ALL SHARP EDGES, R.02 MIN. 3. DO NOT SCALE FROM DRAWING. 4. ALL MACHINING FLUIDS MUST BE FULLY SYNTHETIC, FULLY WATER SOLUBLE AND FREE OF SULFUR, SILICONE, AND CHLORINE.		ADVANCED LIGO		SUB-SYSTEM SEI		Bolt Cap, Stage 0-1 Blade Pusher, aLIGO BSC-ISI			
TOLERANCES: .XX ± .015 .XXX ± .005		MATERIAL 304 SSSL		FINISH 32 μinch		NEXT ASSY D0902593		DESIGNER S.BARNUM 09 Feb. 2010	SIZE B	DWG. NO. D0902603	REV. v1
ANGULAR ± .5°								CHECKER F.MATICHARD 14 FEB 2010	SCALE: 2:1	PROJECTION:	SHEET 1 OF 1
								APPROVAL K.MASON 14 FEB 2010			