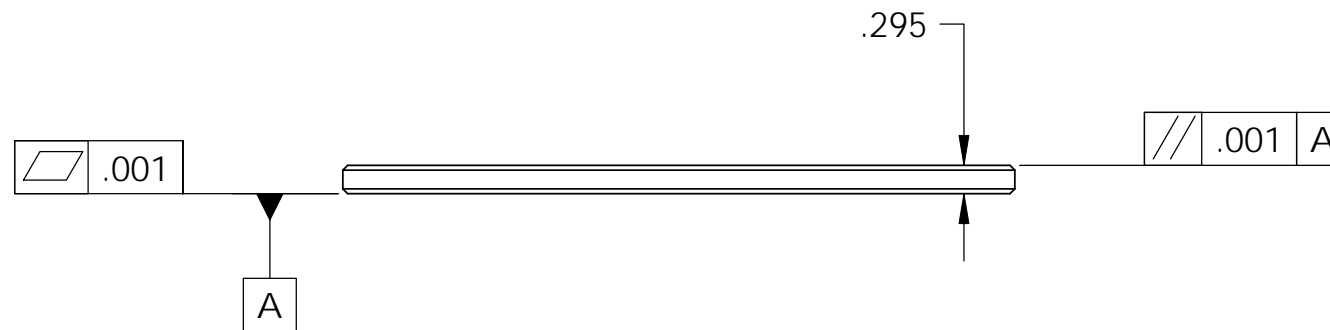
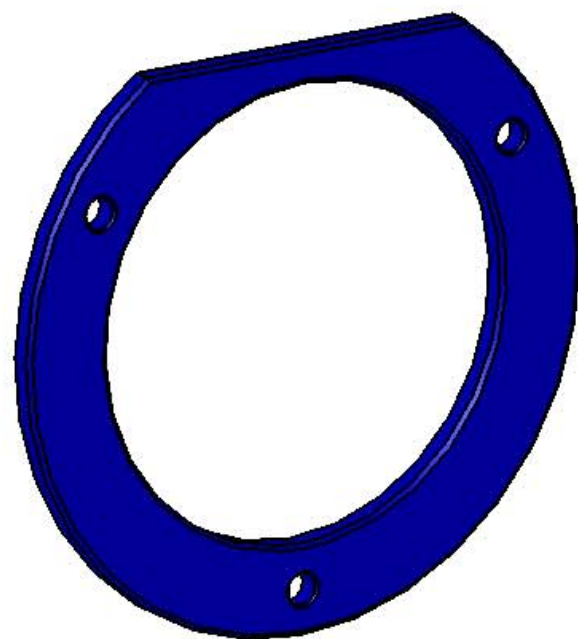
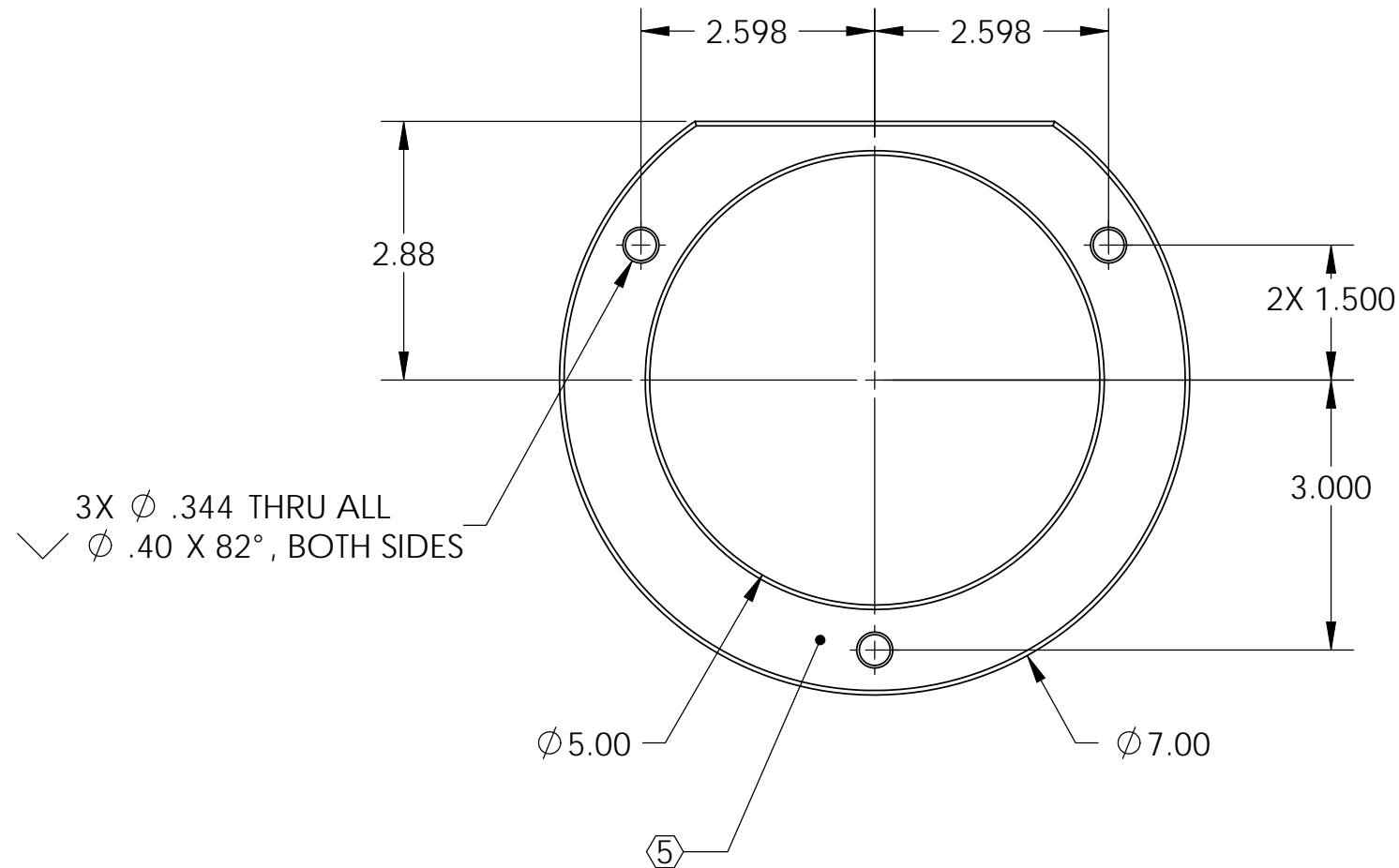


D0902583_Spacer-Horz_GS-13_Stiffener-BSC_ISI, PART PDM REV: X-006, DRAWING PDM REV: X-004

- NOTES CONTINUED:
- 5. SCRIBE, ENGRAVE, OR MECHANICALLY STAMP (NO INKS OR DYES) DRAWING PART NUMBER, REVISION (AND VARIANT OR "TYPE" IF APPLICABLE) ON NOTED SURFACE OF PART FOLLOWED ON THE NEXT LINE WITH A THREE DIGIT SERIAL NUMBER. SERIAL NUMBERS START AT 001 FOR THE FIRST ARTICLE AND PROCEED CONSECUTIVELY. USE MINIMUM 0.12" HIGH CHARACTERS, UNLESS THE SIZE OF THE PART DICTATES SMALLER CHARACTERS. A VIBRATORY TOOL MAY BE USED.
EXAMPLE: DXXXXXX-VY, TYPE-XX, S/N XXX
 - 6. ALL PARTS SHALL BE MANUFACTURED IN ACCORDANCE WITH LIGO SPECIFICATION E0900364.
 - 7. APPROXIMATE WEIGHT: 0.48LB.
 - 8. MACHINE ALL SURFACES TO REMOVE OXIDES AND MILL FINISH.
 - 9. ABRASIVE REMOVAL TECHNIQUES ARE NOT ACCEPTABLE.

REV.	DATE	DCN #	DRAWING TREE #
v1	6 FEB 2010	E0900444	E1000025



NOTES AND TOLERANCES: (UNLESS OTHERWISE SPECIFIED)				LIGO		CALIFORNIA INSTITUTE OF TECHNOLOGY MASSACHUSETTS INSTITUTE OF TECHNOLOGY		PART NAME								
DIMENSIONS ARE IN INCHES TOLERANCES: .XX ± .015 .XXX ± .005 ANGULAR ± .5°				1. INTERPRET DRAWING PER ASME Y14.5-1994. 2. BREAK ALL EDGES .05 X 45°. 3. DO NOT SCALE FROM DRAWING. 4. ALL MACHINING FLUIDS MUST BE FULLY SYNTHETIC, FULLY WATER SOLUBLE AND FREE OF SULFUR, SILICONE, AND CHLORINE.				SYSTEM ADVANCED LIGO		SUB-SYSTEM SEI		DESIGNER S.BARNUM 5 FEB 2010		SIZE DWG. NO. B D0902583		REV. v1
								MATERIAL 6061-T6 Al		FINISH 63 μinch		NEXT ASSY D0902778		CHECKER M.HILLARD 5 FEB 2010		APPROVAL K.MASON 6 FEB 2010