

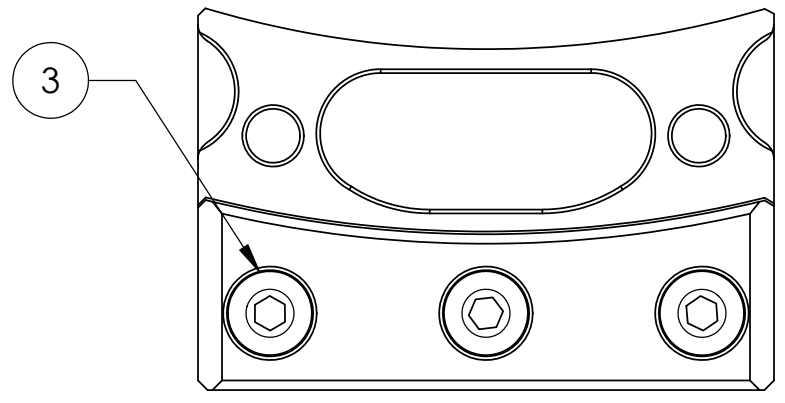
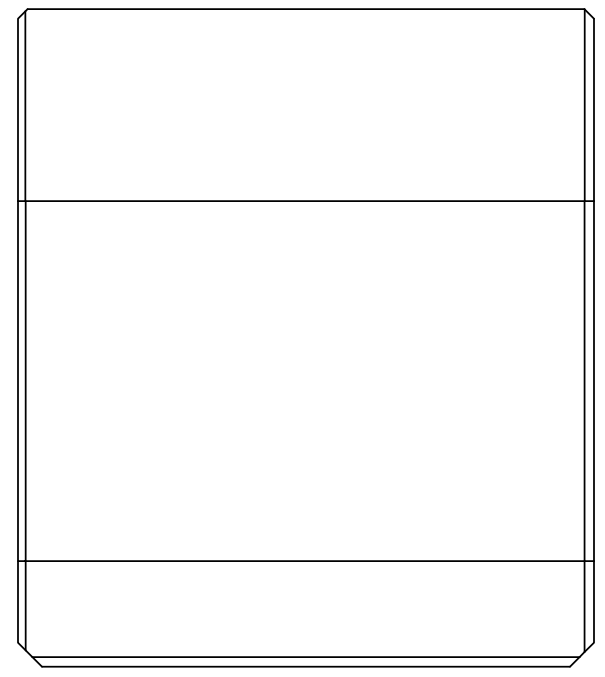
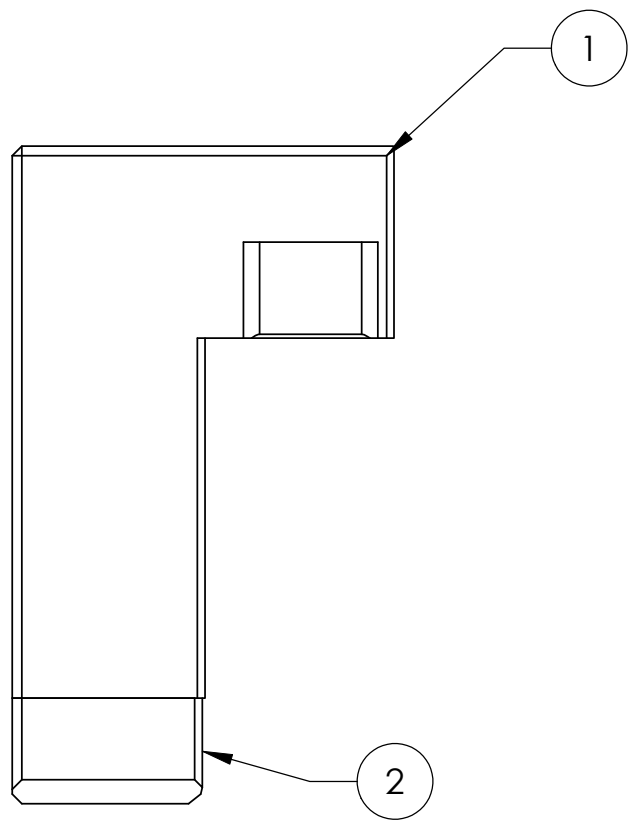
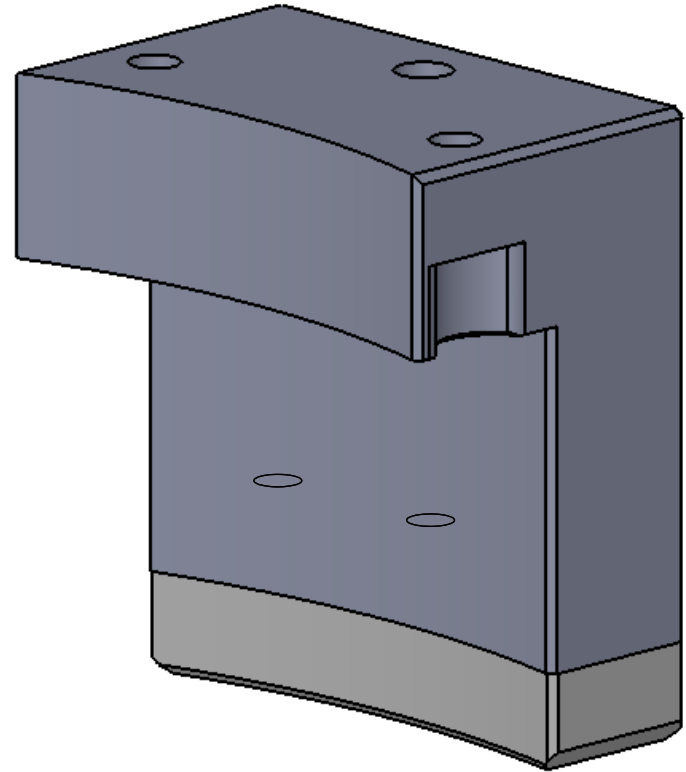
D0902547 Trillium Pod Loading Slider Foot Assem, PART PDM REV: X-009, DRAWING PDM REV: X-004

8 7 6 5 4 3 2 1

**NOTES CONTINUED:**  
 5. REFER TO LIGO DOC T0900593 FOR DETAILED INSTRUCTION OF THE POD ASSEMBLY PROCEDURE, INSTRUCTIONS AND PROCEDURES MUST BE CAREFULLY FOLLOWED.  
 6. REFER TO LIGO DOC E0900357 FOR THE INSTALLATION PROCEDURE OF THE POD ON THE BSC ISI.

REV.	DATE	DCN #	DRAWING TREE #
v1	26 Jan. 2010	E0900443	T0900600

D  
C  
B  
A



3	McMaster_90298A574	Shoulder Screw 5/16 dia x 1/4 lg. 1/4-20 thd	18-8 SSSL	3
2	D0902548	Trillium Pod, Loading, Slider Foot, Slider	PFA440	1
1	D0902546	Trillium Pod, Loading, Slider Foot	6061-T6 Al	1
ITEM NO.	PART NUMBER	DESCRIPTION	MATERIAL	REQ

NOTES AND TOLERANCES: (UNLESS OTHERWISE SPECIFIED)				LIGO CALIFORNIA INSTITUTE OF TECHNOLOGY MASSACHUSETTS INSTITUTE OF TECHNOLOGY		PART NAME	
DIMENSIONS ARE IN INCHES TOLERANCES: .XX ± N/A .XXX ± N/A ANGULAR ± N/A °				1. INTERPRET DRAWING PER ASME Y14.5-1994. 2. REMOVE ALL SHARP EDGES, R.02 MIN. 3. DO NOT SCALE FROM DRAWING. 4. ALL MACHINING FLUIDS MUST BE FULLY SYNTHETIC, FULLY WATER SOLUBLE AND FREE OF SULFUR, SILICONE, AND CHLORINE.		Trillium Pod, Loading, Slider Foot, Assem	
MATERIAL		FINISH		NEXT ASSY		DESIGNER S.BARNUM 1 Dec. 2009 DRAFTER M.HILLARD 26 Jan. 2010 CHECKER F.MATICHARD 26 Jan. 2010 APPROVAL K.MASON 26 Jan. 2010	
N/A		N/A μinch		D0900648		SIZE DWG. NO. <b>B</b> D0902547	
				SCALE: 1:1		PROJECTION:  SHEET 1 OF 1	

8 7 6 5 4 3 2 1