

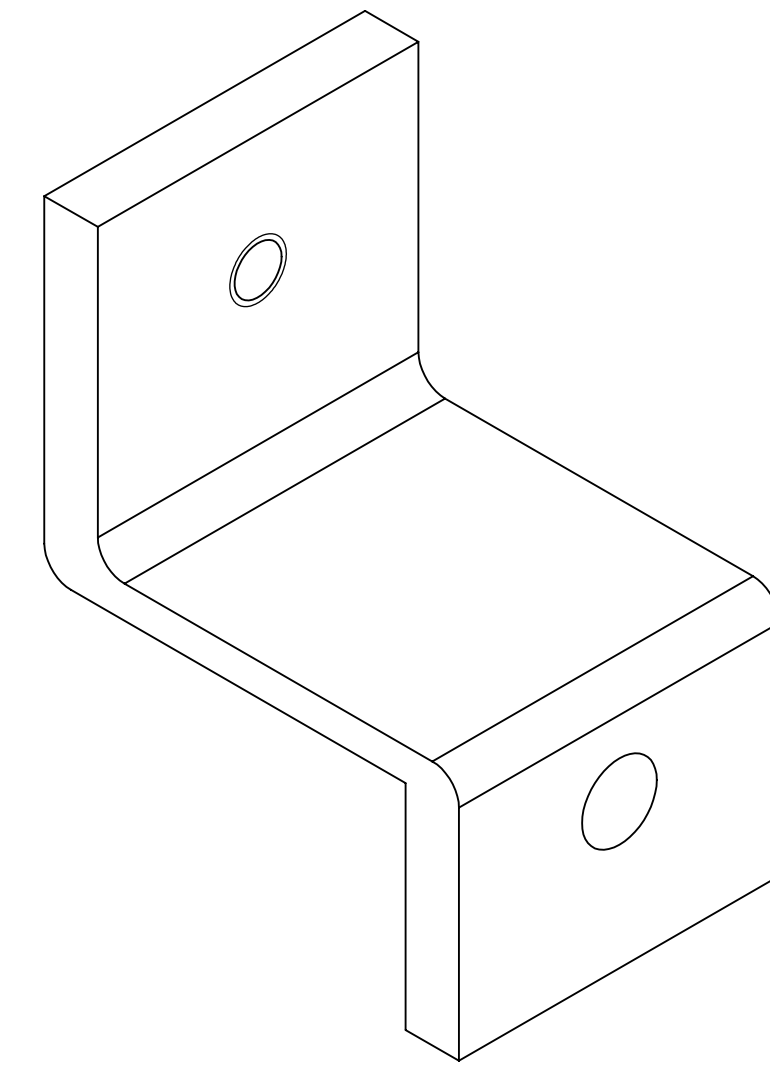
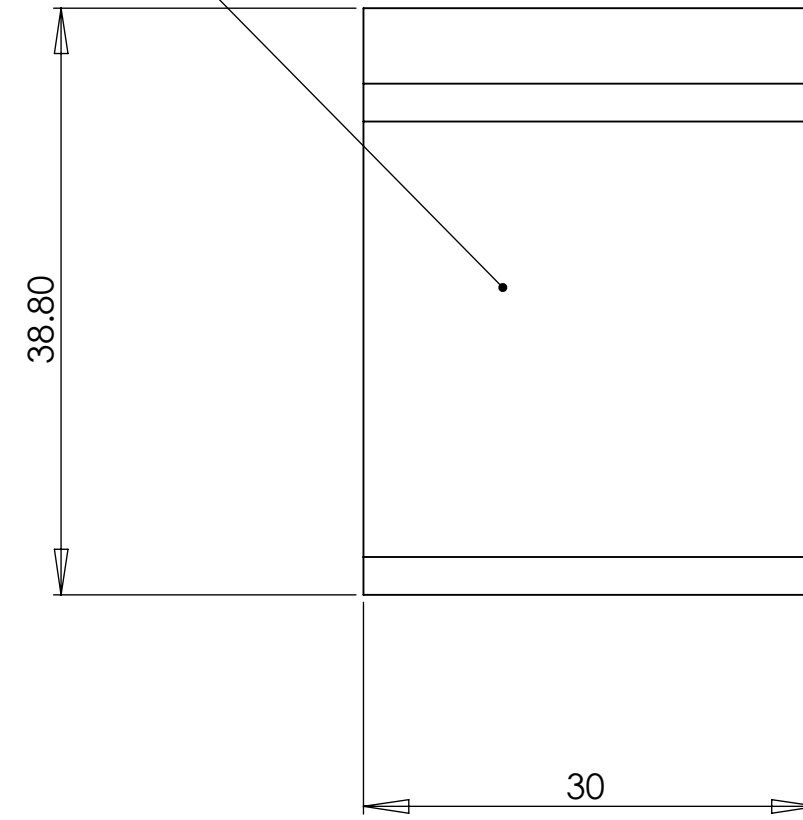
NOTES CONTINUED:

⑤ SCRIBE, ENGRAVE, OR MECHANICALLY STAMP (NO INKS OR DYES) DRAWING PART NUMBER AND REVISION ON NOTED SURFACE FOLLOWED ON THE NEXT LINE BY A THREE DIGIT SERIAL NUMBER. SERIAL NUMBERS START AT 001 FOR THE FIRST ARTICLE AND PROCEED CONSECUTIVELY. USE .07" HIGH CHARACTERS. EXAMPLE: DXXXXXXX-VY, S/N 001. A VIBRATORY TOOL MAY BE USED.

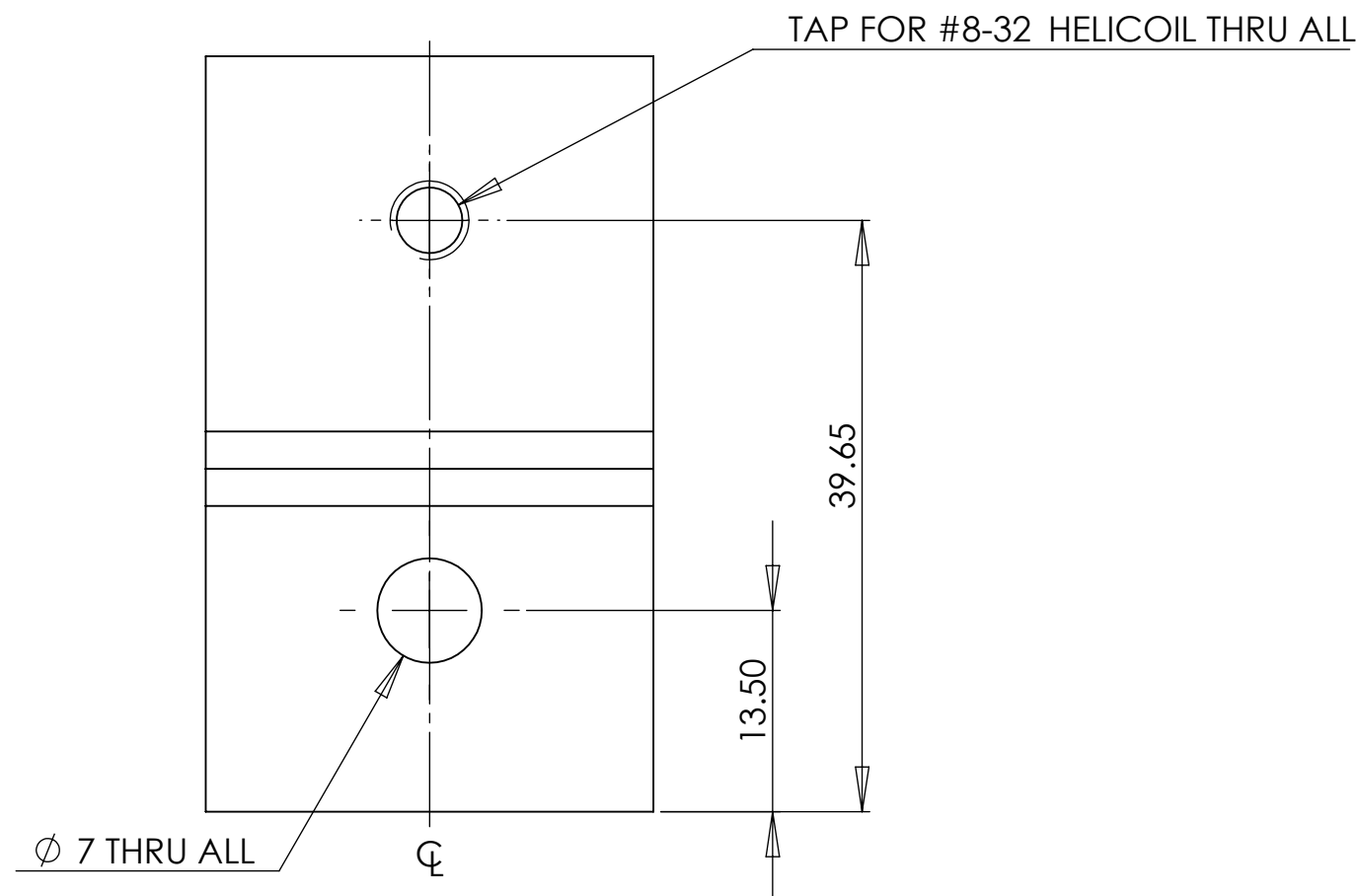
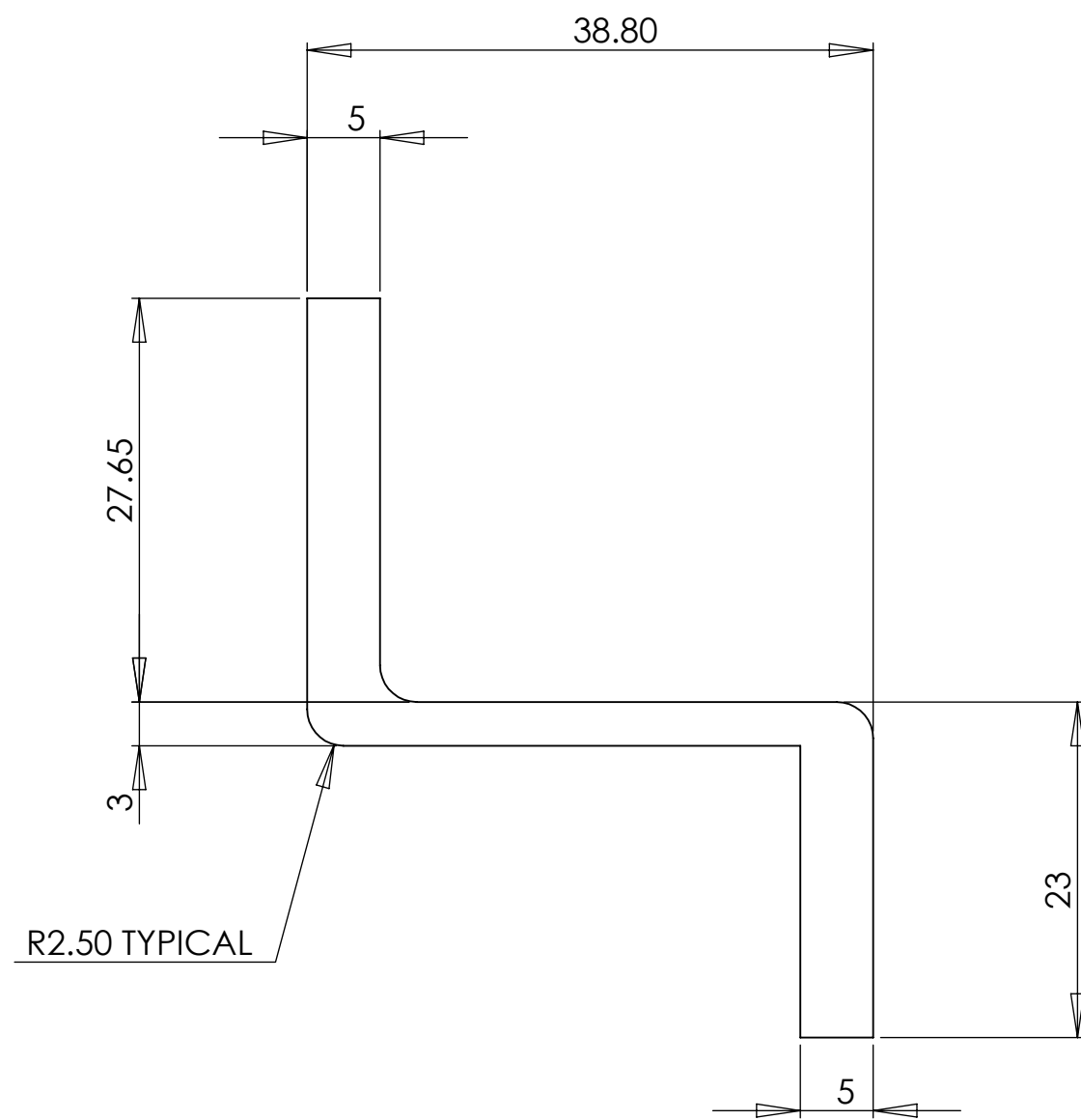
⑥ MACHINE ALL SURFACES.

ENGRAVE PART NO. SEE NOTES

| REV. | DATE | DCN # | DRAWING TREE # |
|------|------|-------|----------------|
|      |      |       |                |
|      |      |       |                |
|      |      |       |                |



ISOMETRIC VIEW



NOTES AND TOLERANCES: (UNLESS OTHERWISE SPECIFIED)

1. INTERPRET DRAWING PER ASME Y14.5-1994.
2. REMOVE ALL SHARP EDGES, R.02 MIN.
3. DO NOT SCALE FROM DRAWING.
4. ALL MACHINING FLUIDS MUST BE FULLY SYNTHETIC, FULLY WATER SOLUBLE AND FREE OF SULFUR, SILICONE, AND CHLORINE.

**MATERIAL** ALUMINIUM  
**FINISH** 1.6  $\mu$ m

DIMENSIONS ARE IN MILLIMETERS  
GENERAL TOLERANCE  $\pm 0.1$   
ANGULAR  $\pm 0.2^\circ$

**LIGO** CALIFORNIA INSTITUTE OF TECHNOLOGY  
MASSACHUSETTS INSTITUTE OF TECHNOLOGY

**SYSTEM** ADVANCED LIGO  
**SUB-SYSTEM** SUS

**NEXT ASSY**

**PART NAME**

ANGLE SECTION 11

**DESIGNER** L CUNNINGHAM 26/06/10  
**DRAFTER** L CUNNINGHAM 28/06/10  
**CHECKER**  
**APPROVAL**

**SIZE** c  
**DWG. NO.** D0902519  
**REV.** V2  
**SCALE:** 2:1  
**PROJECTION:** SHEET 1 OF 1