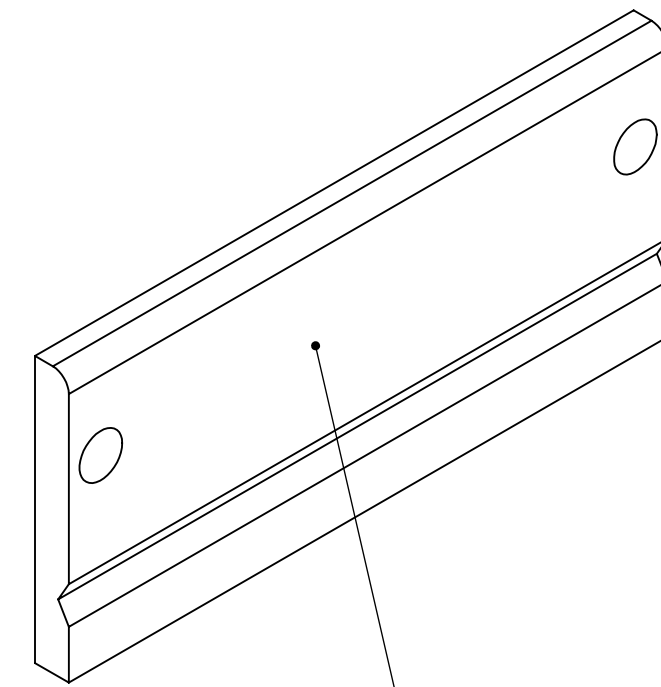


NOTES CONTINUED:

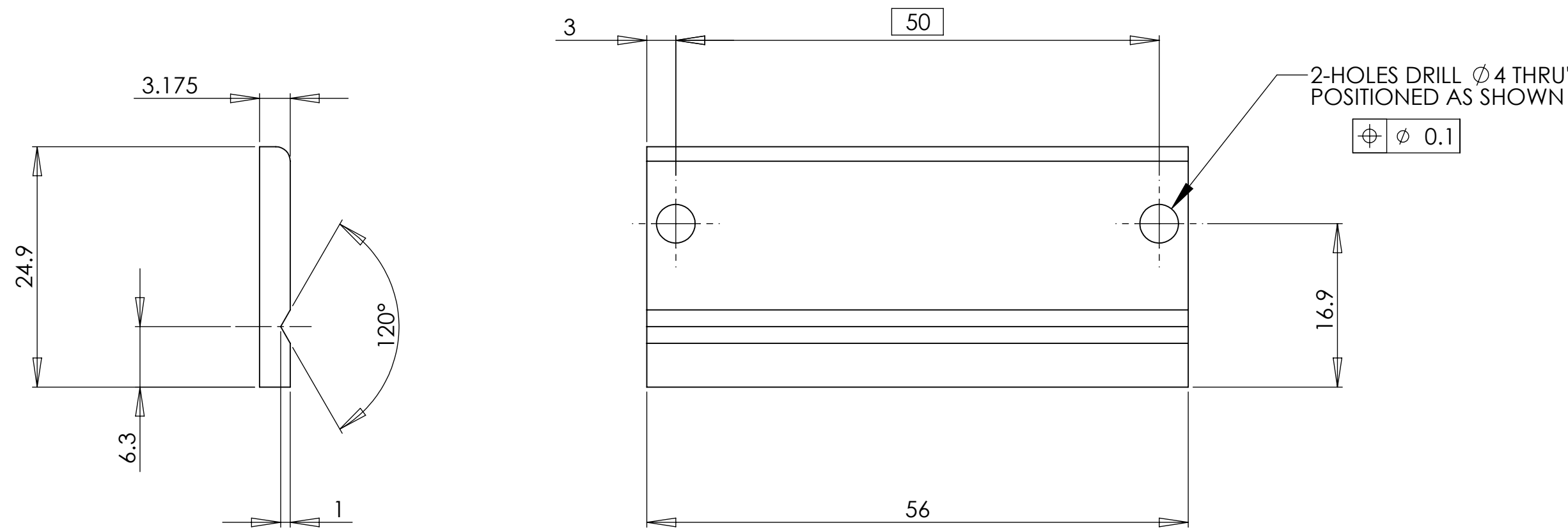
⑤ SCRIBE, ENGRAVE, OR MECHANICALLY STAMP (NO INKS OR DYES) DRAWING PART NUMBER AND REVISION ON NOTED SURFACE FOLLOWED ON THE NEXT LINE BY A THREE DIGIT SERIAL NUMBER. SERIAL NUMBERS START AT 001 FOR THE FIRST ARTICLE AND PROCEED CONSECUTIVELY. USE .07" HIGH CHARACTERS. EXAMPLE: DXXXXXX-VY, S/N 001. A VIBRATORY TOOL MAY BE USED.

⑥ MACHINE ALL SURFACES.

REV.	DATE	DCN #	DRAWING TREE #



ENGRAVE PART NO. SEE NOTES



NOTES AND TOLERANCES: (UNLESS OTHERWISE SPECIFIED)

DIMENSIONS ARE IN MILLIMETERS
 GENERAL TOLERANCES: $\pm 0.1\text{mm}$
 ANGULAR: $\pm 0.2^\circ$

- INTERPRET DRAWING PER ASME Y14.5-1994.
- REMOVE ALL SHARP EDGES, R.02 MIN.
- DO NOT SCALE FROM DRAWING.
- ALL MACHINING FLUIDS MUST BE FULLY SYNTHETIC, FULLY WATER SOLUBLE AND FREE OF SULFUR, SILICONE, AND CHLORINE.

MATERIAL: ALUMINIUM
 FINISH: 1.6 μm



SYSTEM: ADVANCED LIGO
 SUB-SYSTEM: SUS
 NEXT ASSY:

PART NAME

ANGLE SECTION 7

DESIGNER	L CUNNINGHAM	28/06/10	SIZE	DWG. NO.	REV.
DRAFTER	L CUNNINGHAM	30/06/10	c	D0902515	V2
CHECKER					
APPROVAL			SCALE: 2:1	PROJECTION:	SHEET 1 OF 1