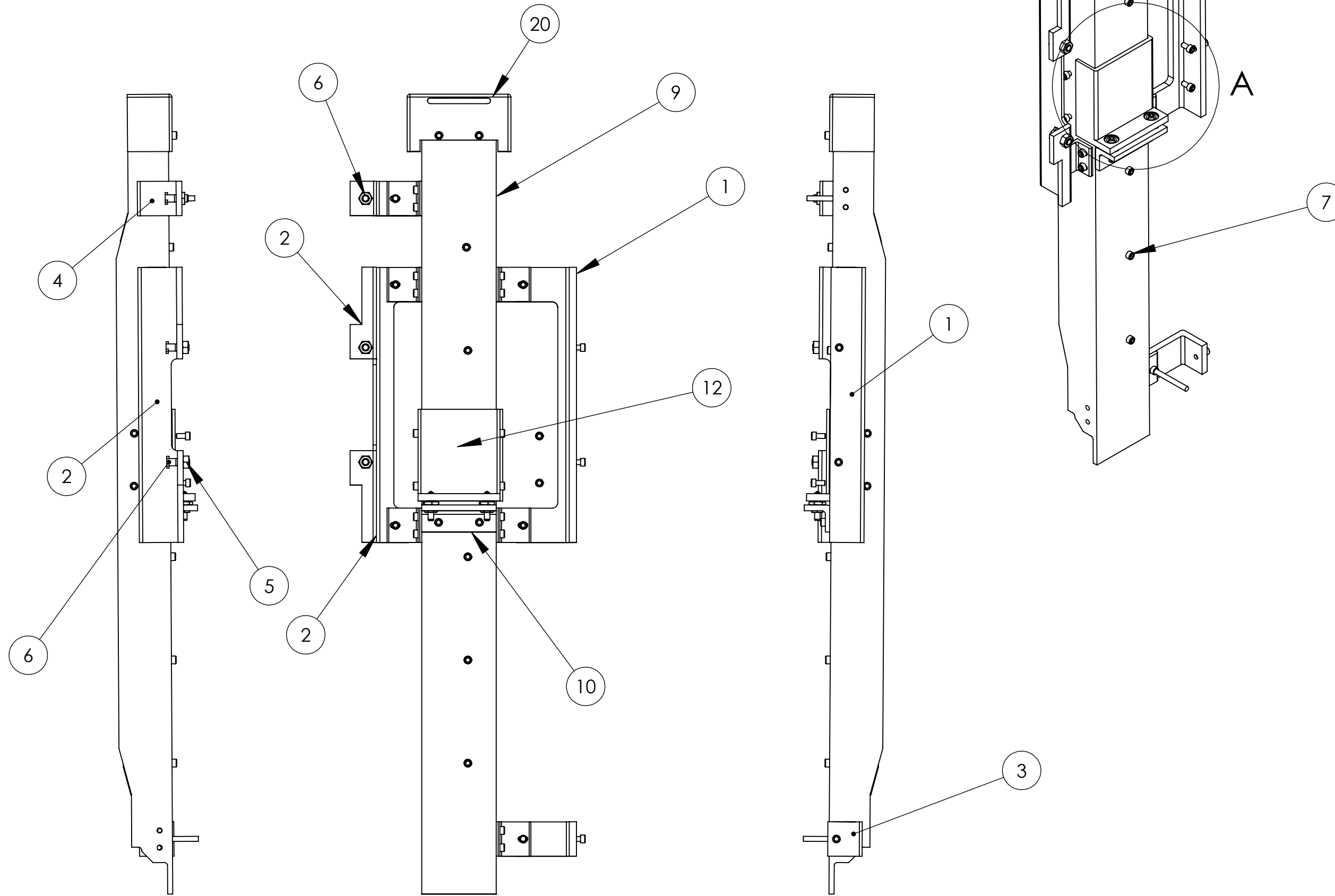
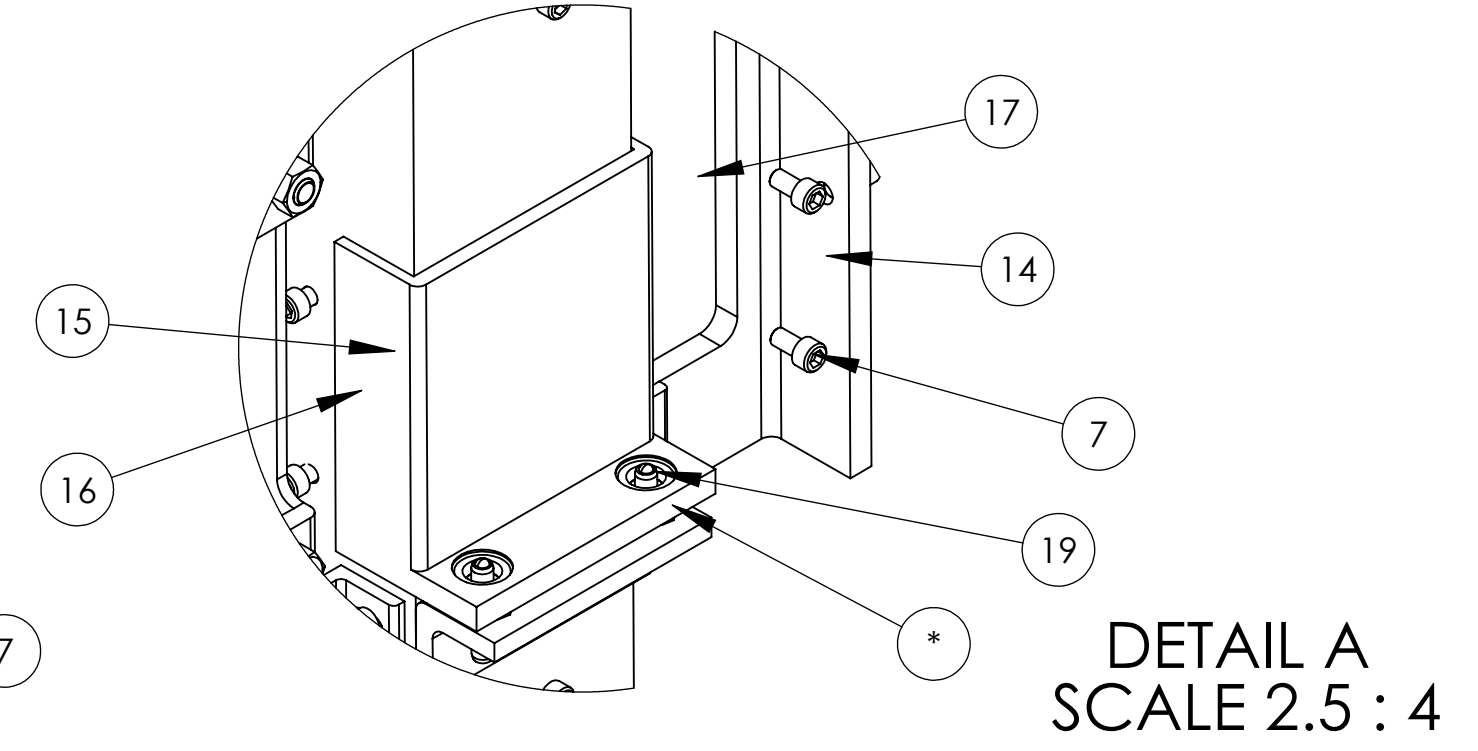


NOTES CONTINUED:
 ⑤ SCRIBE, ENGRAVE, OR MECHANICALLY STAMP (NO INKS OR DYES) DRAWING PART NUMBER AND REVISION ON NOTED SURFACE FOLLOWED ON THE NEXT LINE BY A THREE DIGIT SERIAL NUMBER. SERIAL NUMBERS START AT 001 FOR THE FIRST ARTICLE AND PROCEED CONSECUTIVELY. USE .07" HIGH CHARACTERS. EXAMPLE: DXXXXXX-VY, S/N 001. A VIBRATORY TOOL MAY BE USED.

⑥ MACHINE ALL SURFACES.



REV.	DATE	DCN #	DRAWING TREE #



ITEM NO.	PART NUMBER	DESCRIPTION	MATERIAL	REQ	SPARE	TOTAL
21	D1001830	FIBRE GUARD GUIDE ROD	AISI 316 Stainless Steel (SS)	2		2
20	D1001660	FIBRE GUARD TOP CAP	6061-T6 (SS)	1		1
19	THORLABS F19SS100	BALL ENDED ADJUSTOR SCREW	Material <not specified>	4		4
18	THORLABS N100L5	ULTRA FINE ADJUSTER NUT AND LOCK NUT	Material <not specified>	4		4
17	D0902510	ANGLE SECTION 2	6061-T6 (SS)	1		1
16	D0902509	ANGLE SECTION 1	6061-T6 (SS)	1		1
15	D0902515	ANGLE SECTION 7	6061-T6 (SS)	1		1
14	D0902514	ANGLE SECTION 6	6061-T6 (SS)	1		1
13		PHOTODIODE HOUSING	6061 Alloy	1		1
12	D0902508	FIBRE GUARD SEPERATOR	6061-T6 (SS)	1		1
11	D0902512	ANGLE SECTION 4	6061-T6 (SS)	6		6
10	D0902511	ANGLE SECTION 3	6061-T6 (SS)	1		1
9	D0902507	FIBRE GUARD MAIN BODY	6061-T6 (SS)	1		1
8	D0902513	ANGLE SECTION 5	6061-T6 (SS)	2		2
7	-	SCREW, SOCKET HEAD CAP, #8-32 UNC-2A X 0.3125 LONG	Ag-PLATED 300 SSSL	38		38
6	D901941	TEE BOLT 1/4-20 UNC	Ag PLATED SSSL	3		3
5		1/4-20 UNC HEX NUT	SSSL	3		3
4	D0902519	ANGLE SECTION 11	6061-T6 (SS)	1		1
3	D0902518	ANGLE SECTION 10	6061-T6 (SS)	1		1
2	D0902517	ANGLE SECTION 9	6061-T6 (SS)	1		1
1	D0902516	ANGLE SECTION 8	6061-T6 (SS)	1		1
PARTS LIST						

NOTES AND TOLERANCES: (UNLESS OTHERWISE SPECIFIED)

- INTERPRET DRAWING PER ASME Y14.5-1994.
- REMOVE ALL SHARP EDGES, R.02 MIN.
- DO NOT SCALE FROM DRAWING.
- ALL MACHINING FLUIDS MUST BE FULLY SYNTHETIC, FULLY WATER SOLUBLE AND FREE OF SULFUR, SILICONE, AND CHLORINE.

MATERIAL	N/A	FINISH	N/A μm
----------	-----	--------	-------------------

CALIFORNIA INSTITUTE OF TECHNOLOGY MASSACHUSETTS INSTITUTE OF TECHNOLOGY		PART NAME FIBRE GUARD INSTALL INSTRUCTIONS	
SYSTEM ADVANCED LIGO	SUB-SYSTEM SUS	DESIGNER L CUNNINGHAM	DATE 28/06/10
DRAFTER L CUNNINGHAM	DATE 01/07/10	SIZE c	DWG. NO. D0902505
CHECKER (blank)	APPROVAL (blank)	SCALE: 1:3.5	PROJECTION:
REV. v3		SHEET 1 OF 3	

NOTES CONTINUED:

⑤ SCRIBE, ENGRAVE, OR MECHANICALLY STAMP (NO INKS OR DYES) DRAWING PART NUMBER AND REVISION ON NOTED SURFACE FOLLOWED ON THE NEXT LINE BY A THREE DIGIT SERIAL NUMBER. SERIAL NUMBERS START AT 001 FOR THE FIRST ARTICLE AND PROCEED CONSECUTIVELY. USE .07" HIGH CHARACTERS. EXAMPLE: DXXXXXX-VY, S/N 001. A VIBRATORY TOOL MAY BE USED.

⑥ MACHINE ALL SURFACES.

BRACKETS D0902516, D0902517, D0902518, D0902519 FASTENED TO STRUCTURE. GUIDE RAILS LOCATED IN OPPOSITE CORNERS

GUIDE ROD D1001830 LOCATED IN TOP AND BOTTOM BRACKET

HOLE IN D0902512 SLIDES ALONG D1001830

4 X #8-32 ATTACH GUARD TO STRUCTURE

#8-32 SOCKET HEAD CAP SCREWS FASTEN GUARD IN PLACE

DETAIL B
SCALE 1 : 2

GUIDE RAILS REMOVED
FINAL #8-32 SCREWS IN PLACE

NOTES AND TOLERANCES: (UNLESS OTHERWISE SPECIFIED)

1. INTERPRET DRAWING PER ASME Y14.5-1994.
2. REMOVE ALL SHARP EDGES, R.02 MIN.
3. DO NOT SCALE FROM DRAWING.
4. ALL MACHINING FLUIDS MUST BE FULLY SYNTHETIC, FULLY WATER SOLUBLE AND FREE OF SULFUR, SILICONE, AND CHLORINE.

MATERIAL FINISH μm

LIGO CALIFORNIA INSTITUTE OF TECHNOLOGY
MASSACHUSETTS INSTITUTE OF TECHNOLOGY

PART NAME
FIBRE GUARD INSTALL INSTRUCTIONS

SYSTEM	SUB-SYSTEM	DESIGNER	SIZE	DWG. NO.	REV.
		L CUNNINGHAM	c	D0902505	v3
CHECKER			SCALE: 1:5	PROJECTION:	SHEET 2 OF 3
APPROVAL					

DIMENSIONS ARE IN MILLIMETERS

TOLERANCES:
.XX \pm .10
.XXX \pm .010

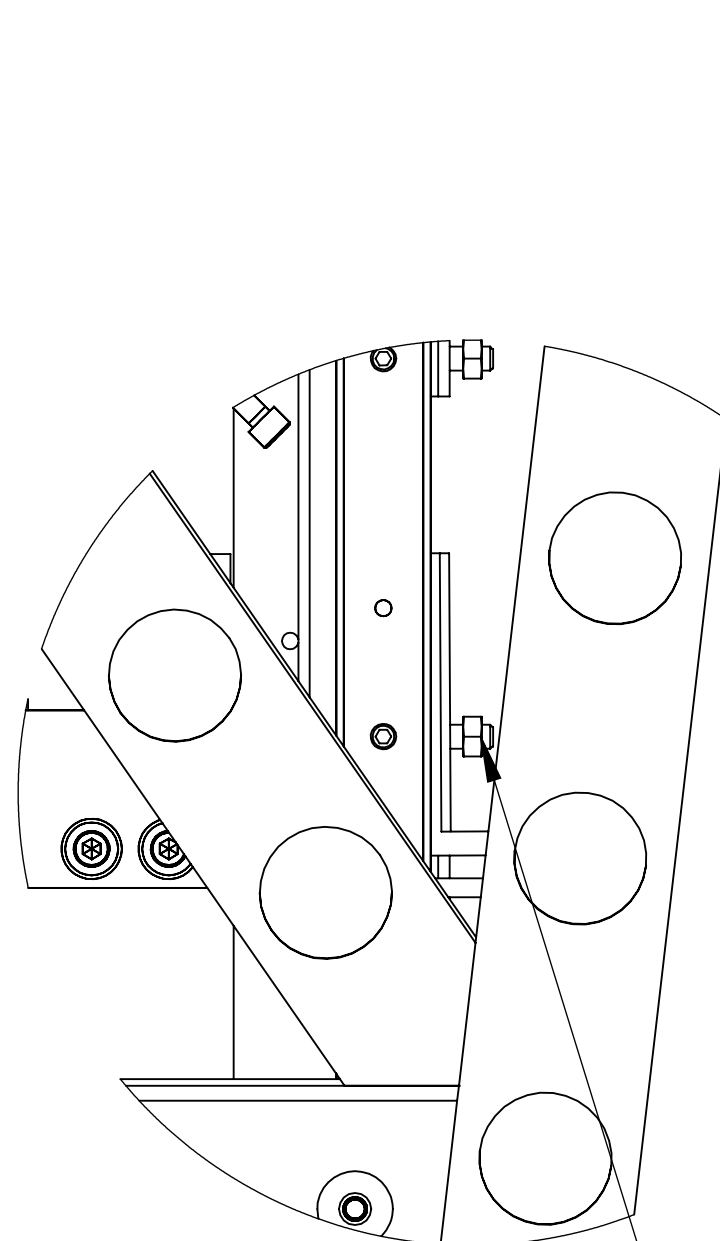
ANGULAR \pm 0.2°

NOTES CONTINUED:

⑤ SCRIBE, ENGRAVE, OR MECHANICALLY STAMP (NO INKS OR DYES) DRAWING PART NUMBER AND REVISION ON NOTED SURFACE FOLLOWED ON THE NEXT LINE BY A THREE DIGIT SERIAL NUMBER. SERIAL NUMBERS START AT 001 FOR THE FIRST ARTICLE AND PROCEED CONSECUTIVELY. USE .07" HIGH CHARACTERS. EXAMPLE: DXXXXXXX-VY, S/N 001. A VIBRATORY TOOL MAY BE USED.

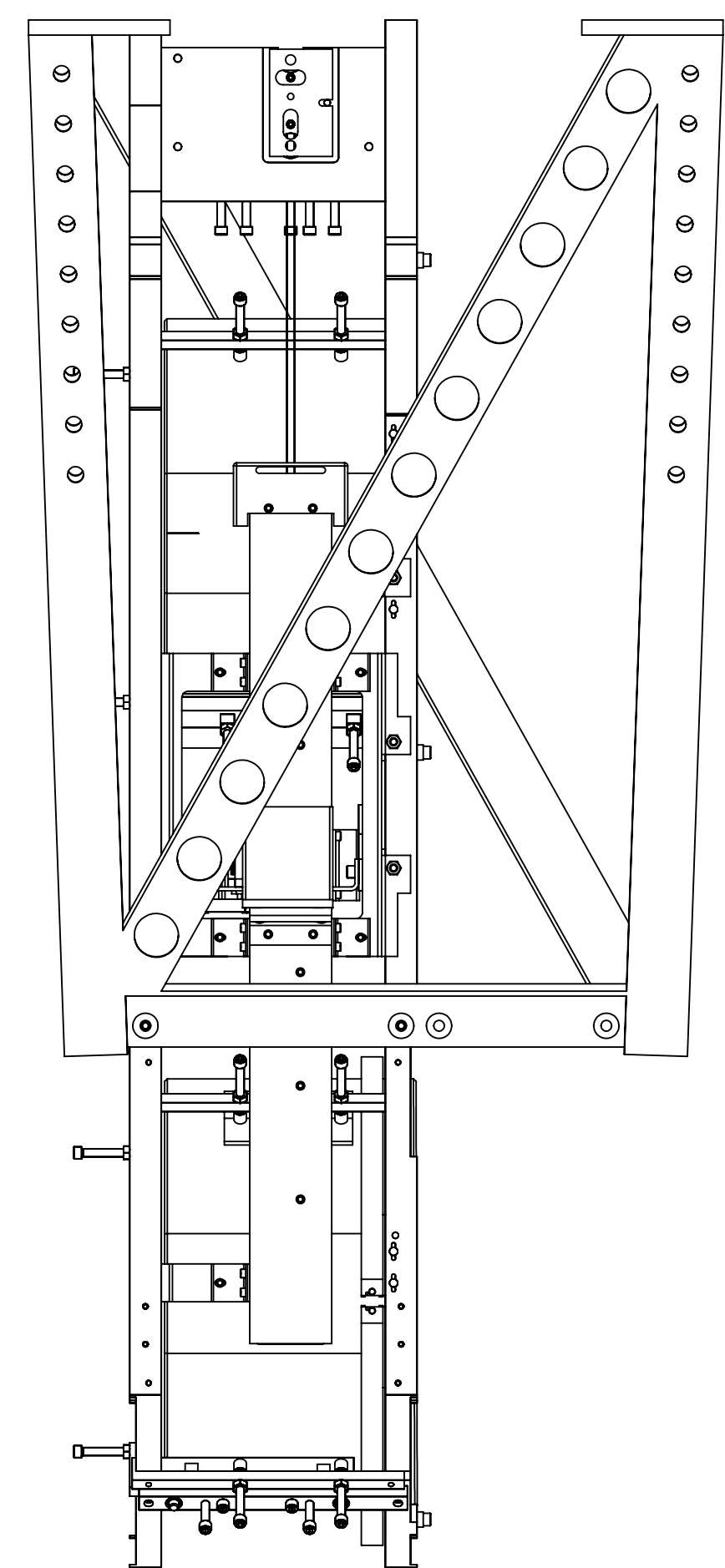
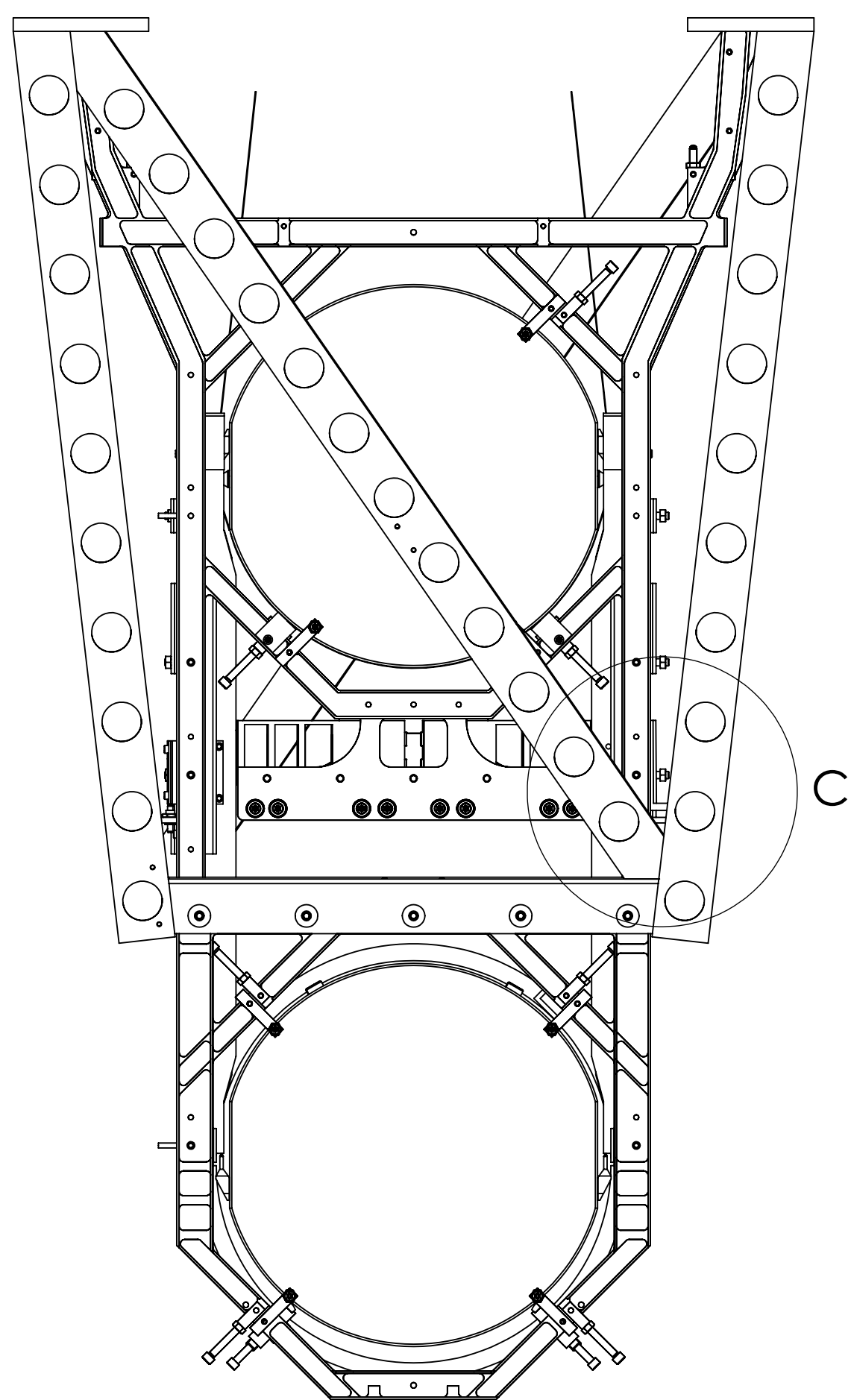
⑥ MACHINE ALL SURFACES.

REV.	DATE	DCN #	DRAWING TREE #



CLEARANCE BETWEEN GUARD AND SLEEVE

DETAIL C
SCALE 1 : 2



NOTES AND TOLERANCES: (UNLESS OTHERWISE SPECIFIED)

1. INTERPRET DRAWING PER ASME Y14.5-1994.
2. REMOVE ALL SHARP EDGES, R.02 MIN.
3. DO NOT SCALE FROM DRAWING.
4. ALL MACHINING FLUIDS MUST BE FULLY SYNTHETIC, FULLY WATER SOLUBLE AND FREE OF SULFUR, SILICONE, AND CHLORINE.

MATERIAL	FINISH	μm
----------	--------	----

CALIFORNIA INSTITUTE OF TECHNOLOGY MASSACHUSETTS INSTITUTE OF TECHNOLOGY	
SYSTEM	SUB-SYSTEM
NEXT ASSY	

PART NAME			FIBRE GUARD INSTALL INSTRUCTIONS		
DESIGNER		SIZE	DWG. NO.	REV.	
DRAFTER	L CUNNINGHAM	c	D0902505	v3	
CHECKER		SCALE: 1:5	PROJECTION:	SHEET 3 OF 3	
APPROVAL					