

4

3

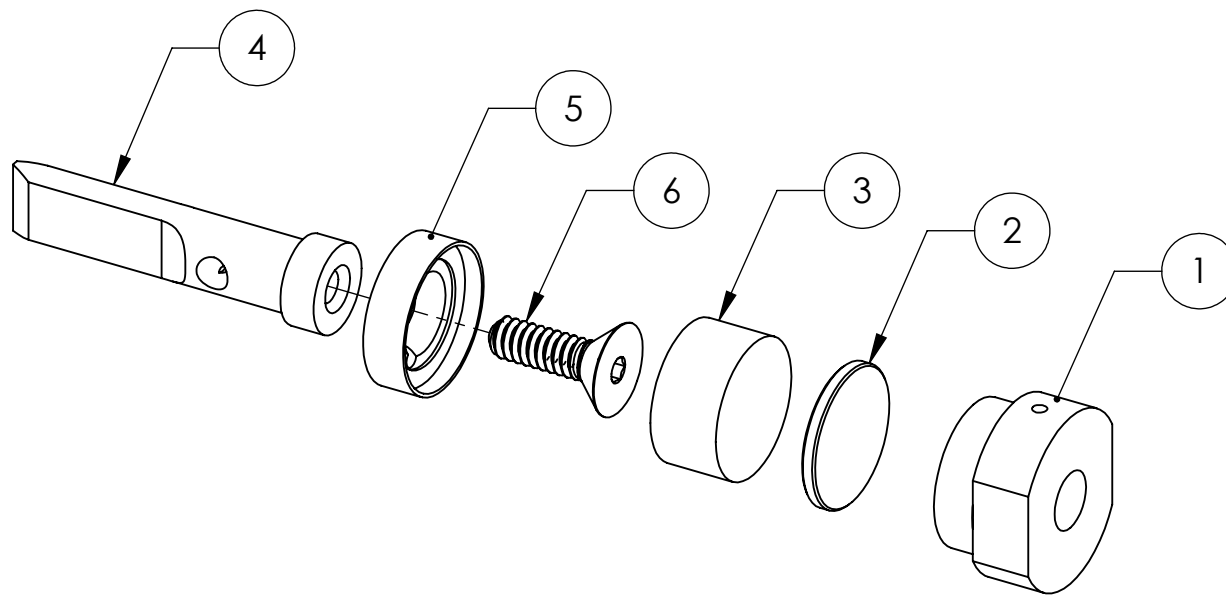
2

1

NOTE:


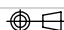
⊠ ITEM NO. 2 TO BE CLEANLY PRESS FIT INTO
ITEM NO. 1 AND ITEM NO. 4 BY LIGO AFTER
ALL ITEMS ARE CLEANED AND BAKED.

REV.	DATE	DCN #	DRAWING TREE #
v1	-	INTERNAL REV	-
v2	09 JUL 2010	E0900501	E0900353
v3	20 JUN 2011	E1100590	E0900353



6	94518A108 (McMASTER-CARR P/N)	SS FLAT HEAD #4-40 X 3/8" SCREW	300 SSTL	1	1	2
5	D1100574	BOSEM FLAT FLAG DISK αLIGO SUS	416 SSTL	1	-	1
4	D1100573	BOSEM FLAG , αLIGO SUS	6061-T6 Al	1	-	1
3	DCNI 00626/N	SINTERED NdFeB MAGNET, Ni-PLATED, 10 mm X 5 mm (MMG MAGDEV P/N OR EQUIVALENT)	NEO35	1	-	1
2	D1001534	MAGNETIC PLUG	416 SSTL	1	1	2
1	D0902494	MAGNET HOLDER (SHORT), UPPER MASS	6061-T6 Al	1	-	1
ITEM NO.	PART NUMBER	DESCRIPTION	MATERIAL	REQ	SPARE	TOTAL

PARTS LIST

 CALIFORNIA INSTITUTE OF TECHNOLOGY MASSACHUSETTS INSTITUTE OF TECHNOLOGY		PART NAME		MAGNET/FLAG ASSY (SHORT), UPPER MASS					
SYSTEM	ADVANCED LIGO	SUB-SYSTEM	SUS	DESIGNER	M. MEYER	26 OCT 2009	SIZE	DWG. NO.	REV.
NEXT ASSY	MULTIPLE ASSY			DRAFTER	B. MOORE	29 JUN 2012	A	D0902492	v3
				CHECKER	M. MEYER	25 NOV 2009			
				APPROVAL			SCALE: 2:1	PROJECTION:	 SHEET 1 OF 1

4

3

2

1