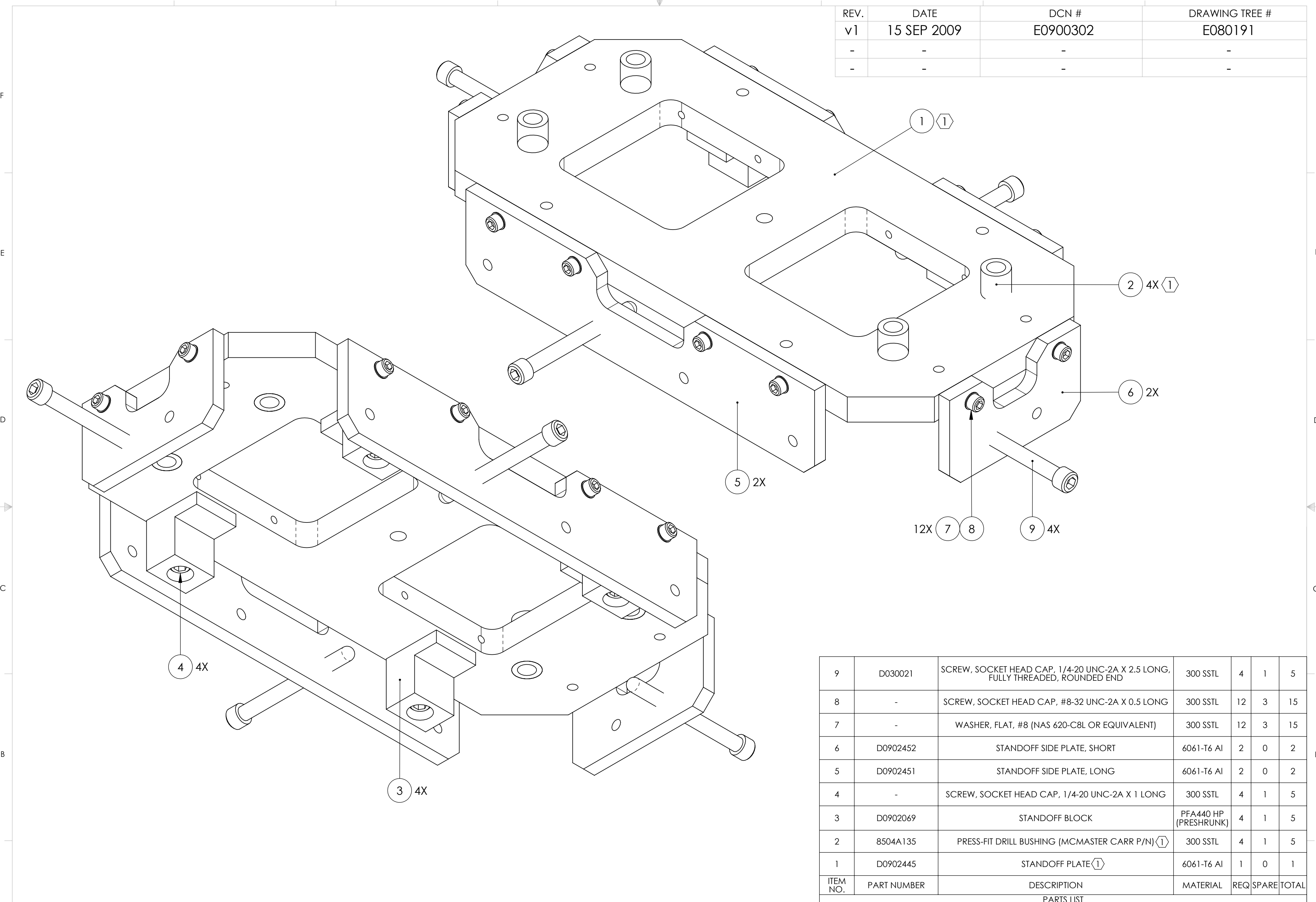


REV.	DATE	DCN #	DRAWING TREE #
v1	15 SEP 2009	E0900302	E080191
-	-	-	-
-	-	-	-



ITEM NO.	PART NUMBER	DESCRIPTION	MATERIAL	REQ	SPARE	TOTAL
9	D030021	SCREW, SOCKET HEAD CAP, 1/4-20 UNC-2A X 2.5 LONG, FULLY THREADED, ROUNDED END	300 SSTL	4	1	5
8	-	SCREW, SOCKET HEAD CAP, #8-32 UNC-2A X 0.5 LONG	300 SSTL	12	3	15
7	-	WASHER, FLAT, #8 (NAS 620-C8L OR EQUIVALENT)	300 SSTL	12	3	15
6	D0902452	STANDOFF SIDE PLATE, SHORT	6061-T6 Al	2	0	2
5	D0902451	STANDOFF SIDE PLATE, LONG	6061-T6 Al	2	0	2
4	-	SCREW, SOCKET HEAD CAP, 1/4-20 UNC-2A X 1 LONG	300 SSTL	4	1	5
3	D0902069	STANDOFF BLOCK	PFA440 HP (PRESHRUNK)	4	1	5
2	8504A135	PRESS-FIT DRILL BUSHING (MCMaster CARR P/N) (1)	300 SSTL	4	1	5
1	D0902445	STANDOFF PLATE (1)	6061-T6 Al	1	0	1
PARTS LIST						

NOTES AND TOLERANCES: (UNLESS OTHERWISE SPECIFIED)

(1) DRILL BUSHINGS (ITEM NO. 2) TO BE PRESS-FIT INTO ITEM NO. 1 AFTER ALL PARTS ARE CLEANED AND BAKED.

MATERIAL: N/A      FINISH: N/A μinch

**LIGO** CALIFORNIA INSTITUTE OF TECHNOLOGY MASSACHUSETTS INSTITUTE OF TECHNOLOGY

SYSTEM: ADVANCED LIGO      SUB-SYSTEM: SUS

NEXT ASSY: MAGNET PLACEMENT FIXTURE, INT. MASS

PART NAME: POSITIONING STANDOFF

DESIGNER: D. BRIDGES    17 OCT 2009    SIZE: C    DWG. NO.: D0902444    REV.: v1

DRAFTER: D. BRIDGES    19 OCT 2009

CHECKER: J. ROMIE    19 OCT 2009

APPROVAL: \_\_\_\_\_

SCALE: 1:1    PROJECTION:    SHEET 1 OF 1