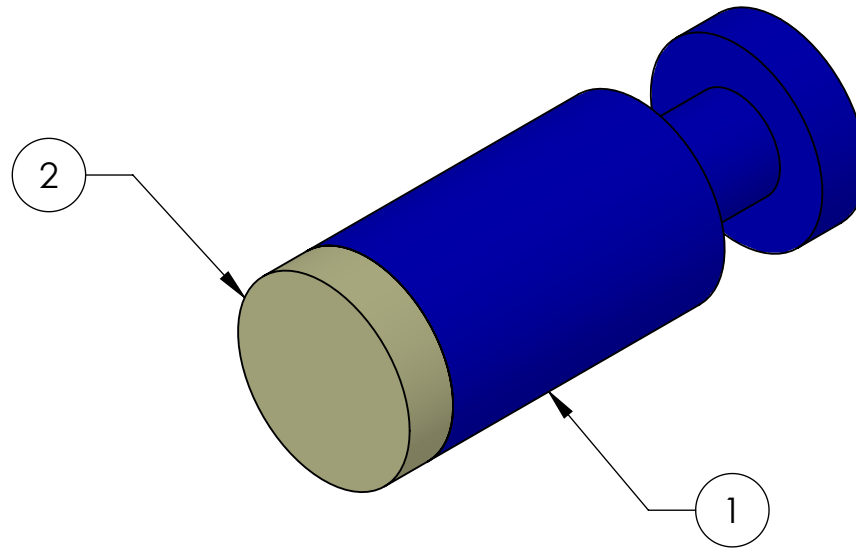


REV.	DATE	DCN #	DRAWING TREE #
v1	30 DEC 2009	E0900507	E0900353
v2	12 FEB 2014	E1400067-X0	-
-	-	-	-



3	-	UHV-COMPATIBLE ADHESIVE (MASTERBOND EP30-2 OR EQUIVALENT)	-	A/R	-	A/R
2	SCDS-079-020	SINTERED SmCo MAGNET, 2 mm X 0.5 mm (MMC P/N OR EQUIVALENT)	SmCo 2:17	1	-	1
1	D0902431	MAGNET STANDOFF, HSTS TEST MASS	6061-T6 Al	1	-	1
ITEM NO.	PART NUMBER	DESCRIPTION	MATERIAL	REQ	SPARE	TOTAL
PARTS LIST						

**NOTES: (UNLESS OTHERWISE SPECIFIED)**

1. INTERPRET DRAWING PER ASME Y14.5-1994.
2. DO NOT SCALE FROM DRAWING.
3. ASSEMBLE ACCORDING TO LIGO-E990196, MAGNET/STANDOFF ASSEMBLY PREPARATION SPECIFICATION.



CALIFORNIA INSTITUTE OF TECHNOLOGY  
MASSACHUSETTS INSTITUTE OF TECHNOLOGY

SYSTEM: ADVANCED LIGO  
SUB-SYSTEM: SUS  
NEXT ASSY: HSTS TEST MASS

PART NAME: MAGNET/STANDOFF ASSEMBLY, HSTS TEST MASS

DESIGNER	M. MEYER	14 OCT 2009	SIZE	DWG. NO.	REV.
DRAFTER	B. MOORE	17 NOV 2009	A	D0902432	v2
CHECKER	M. MEYER	19 NOV 2009			
APPROVAL			SCALE: 16:1	PROJECTION:	

SHEET 1 OF 1