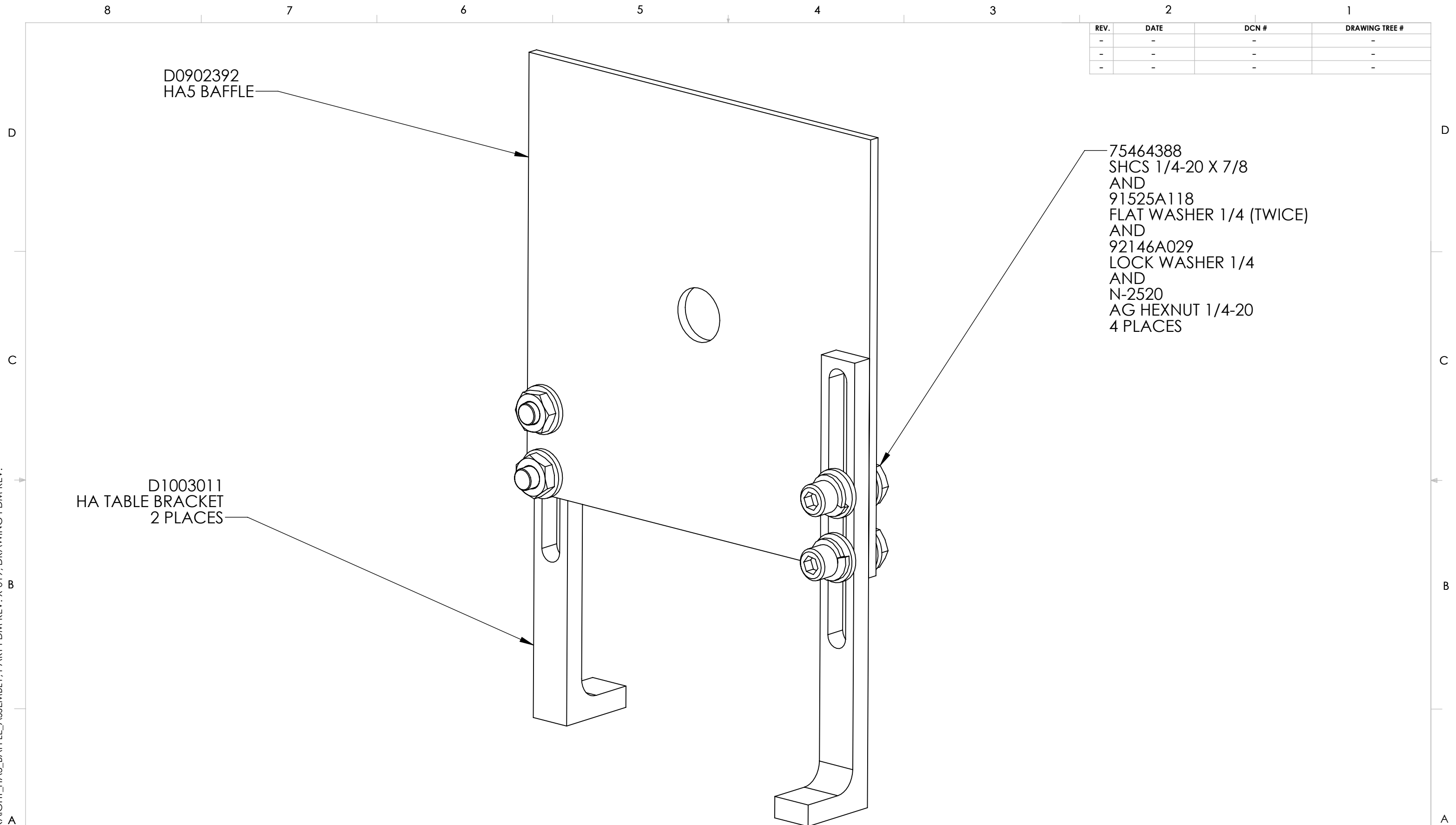


D0902393\_ALIGO\_IO\_STRAIGHT\_HA5\_BAFFLE\_ASSEMBLY, PART PDM REV: X-019, DRAWING PDM REV:

REV.	DATE	DCN #	DRAWING TREE #
-	-	-	-
-	-	-	-
-	-	-	-



D0902392  
HA5 BAFFLE

75464388  
SHCS 1/4-20 X 7/8  
AND  
91525A118  
FLAT WASHER 1/4 (TWICE)  
AND  
92146A029  
LOCK WASHER 1/4  
AND  
N-2520  
AG HEXNUT 1/4-20  
4 PLACES

D1003011  
HA TABLE BRACKET  
2 PLACES

NOTES AND TOLERANCES: (UNLESS OTHERWISE SPECIFIED)	
DIMENSIONS ARE IN	1. INTERPRET DRAWING PER ASME Y14.5-1994.
TOLERANCES:	2. REMOVE ALL SHARP EDGES, .005-.015, FOR MACHINED PARTS. ROUND ALL EDGES APPROXIMATELY R.02 FOR SHEET METAL PARTS.
.XX ±	3. DO NOT SCALE FROM DRAWING.
.XXX ±	4. ALL MACHINING FLUIDS MUST BE FULLY SYNTHETIC, FULLY WATER SOLUBLE AND FREE OF SULFUR, SILICONE, AND CHLORINE.
ANGULAR ± °	
MATERIAL	N/A
FINISH	N/A μinch

CALIFORNIA INSTITUTE OF TECHNOLOGY MASSACHUSETTS INSTITUTE OF TECHNOLOGY		PART NAME		HA5 BAFFLE ASSEMBLY	
SYSTEM	ADVANCED LIGO	SUB-SYSTEM	100	DESIGNER	L.WILLIAMS 17 MAY 2013
NEXT ASSY	D1000332	CHECKER		DRFTER	L.WILLIAMS 17 MAY 2013
		APPROVAL		SIZE	DWG. NO. B D0902393
				REV.	v1
				SCALE:	1:1
				PROJECTION:	
					SHEET 1 OF 1

8 7 6 5 4 3 2 1

D

C

B

A