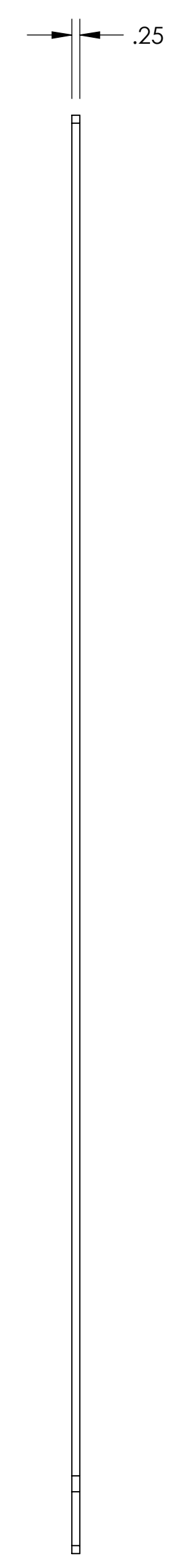
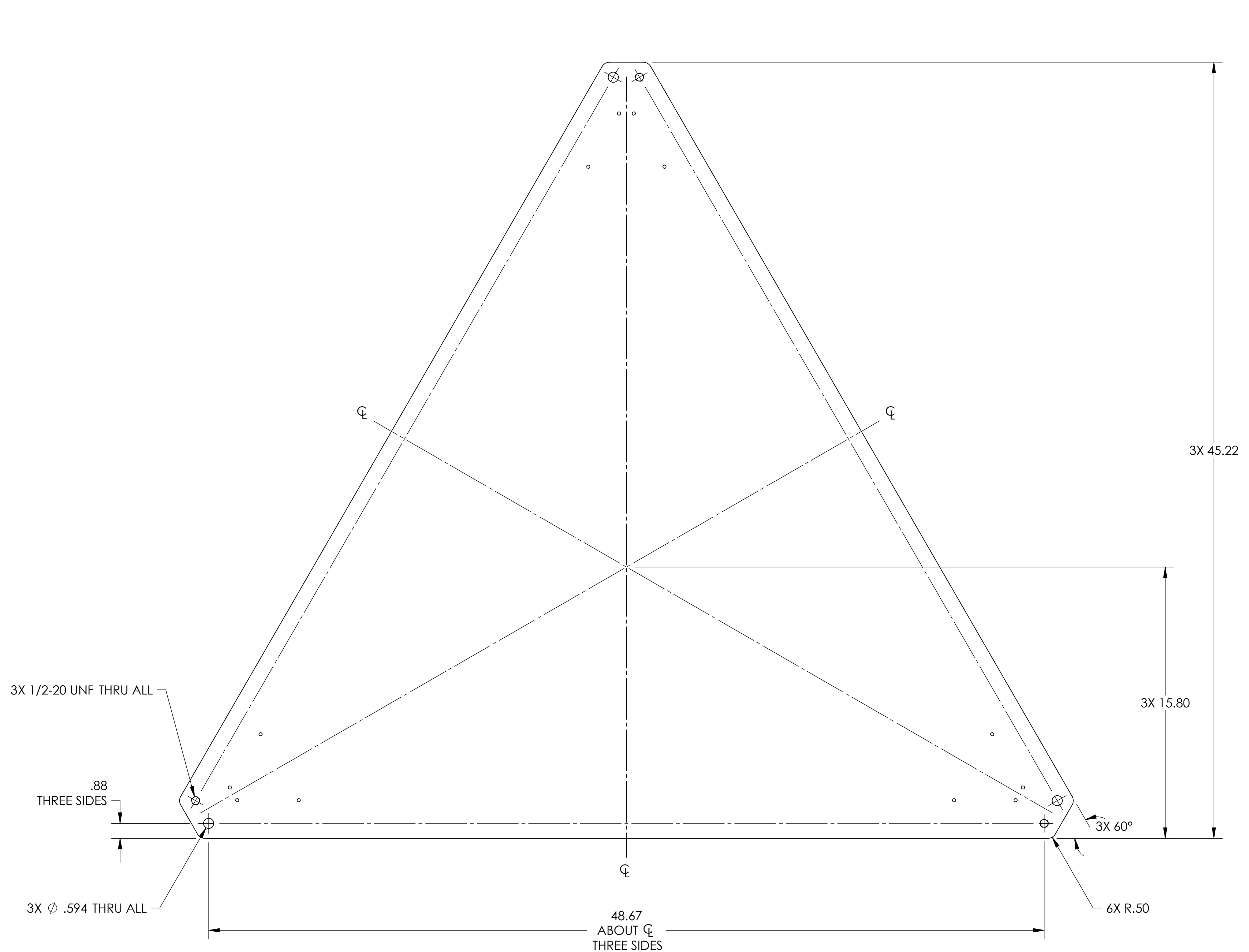
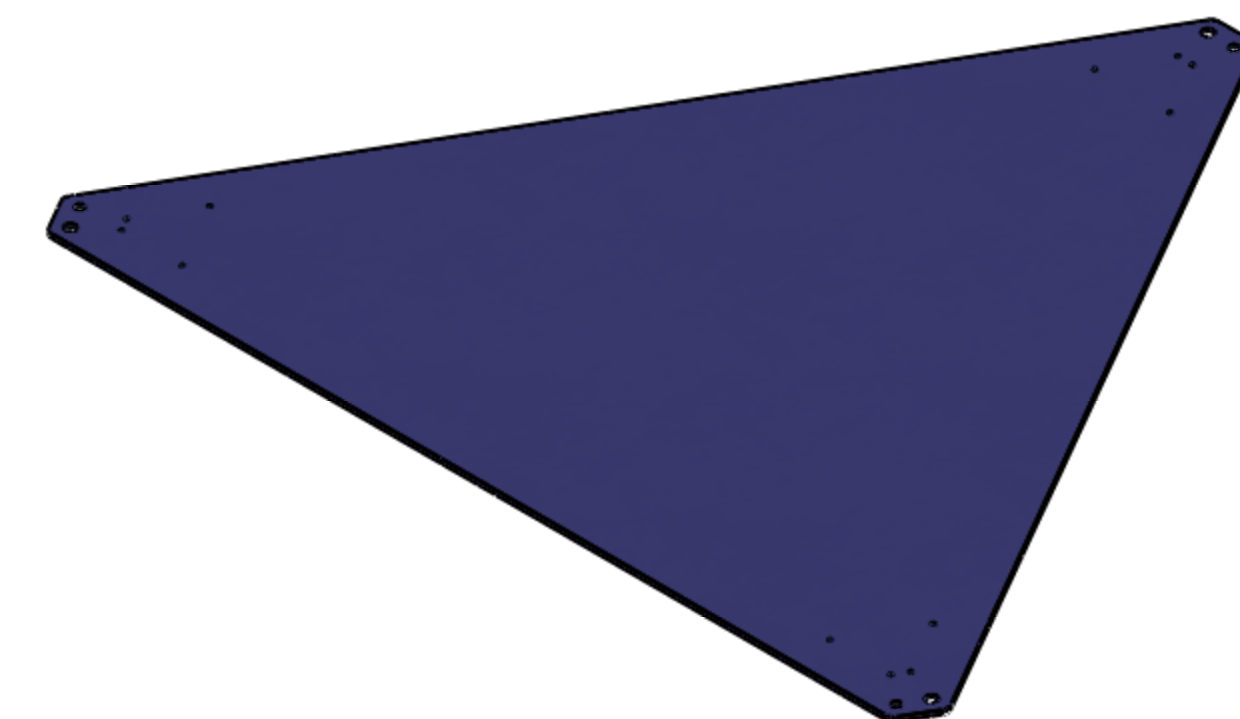


REV.	DATE	DCN #	DRAWING TREE #
v1	17 NOV 2009	E0900399-v1	-
-	-	-	-
-	-	-	-



NOTES CONTINUED:

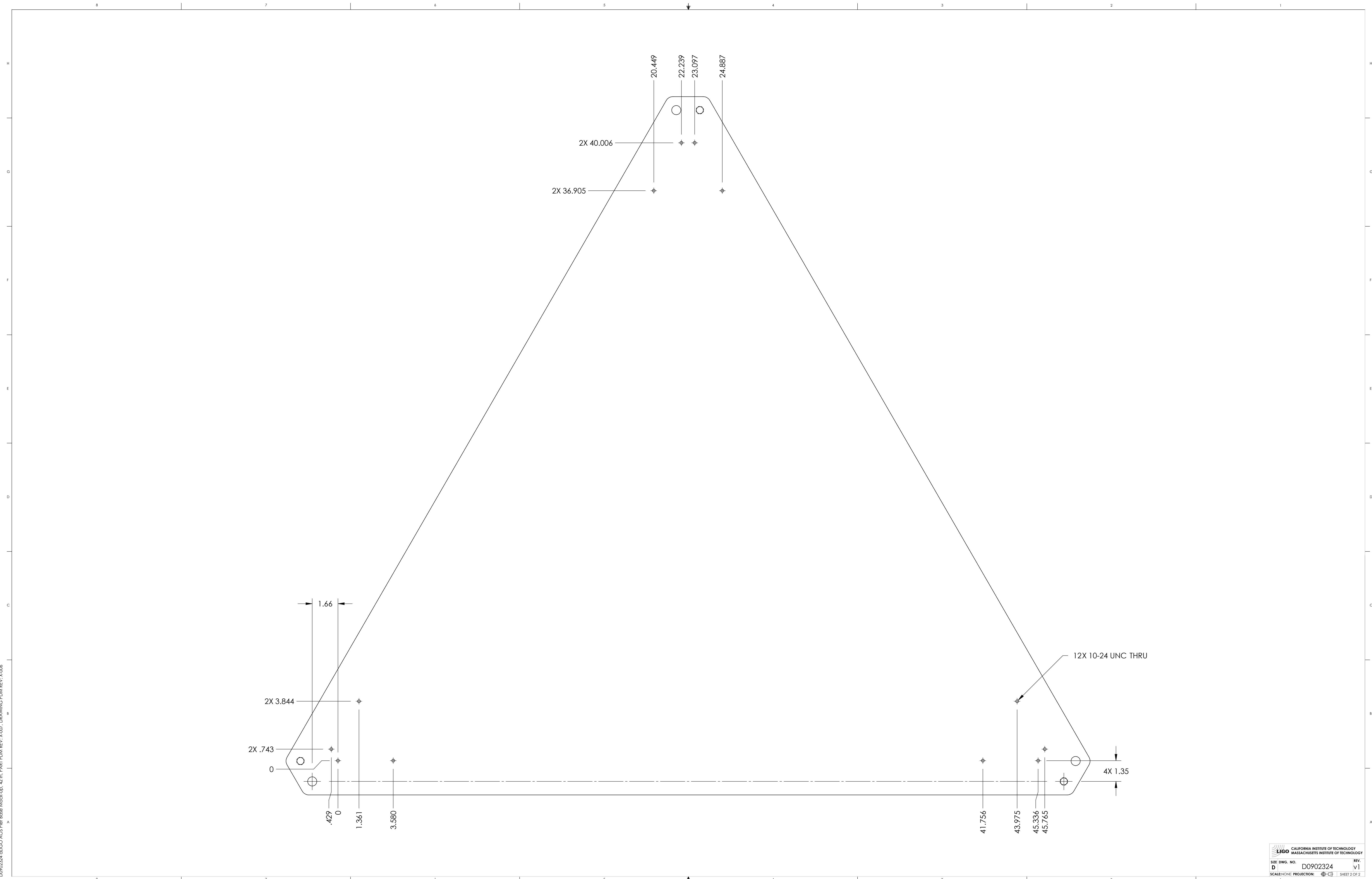
DIMENSIONS ARE IN INCHES [MM]	
TOLERANCES: .XX ± .01 .XXX ± .005	
ANGULAR ± 2°	

NOTES AND TOLERANCES: (UNLESS OTHERWISE SPECIFIED)	
1. INTERPRET DRAWING PER ASME Y14.5-1994.	
2. REMOVE ALL SHARP EDGES, R.02 MIN.	
3. DO NOT SCALE FROM DRAWING.	
4. ALL MACHINING FLUIDS MUST BE FULLY SYNTHETIC, FULLY WATER-SOLUBLE AND FREE OF SULFUR, SILICONE, AND CHLORINE.	
MATERIAL	6061 ALLOY
FINISH	N/A μinch

 CALIFORNIA INSTITUTE OF TECHNOLOGY MASSACHUSETTS INSTITUTE OF TECHNOLOGY	SYSTEM	ADVANCED LIGO	SUB-SYSTEM	AOS
	NEXT ASSY	D0902611, D0902639, D0902650, D0902692		

PART NAME				ALIGO AOS PIER BASE MOCK-UP, 42 in	
DESIGNER	C. CONLEY	06 NOV 2009	SIZE	DWG. NO.	
DRAFTER	C. CONLEY	17 NOV 2009	D	D0902324	
CHECKER					
APPROVAL					
SCALE: NONE			PROJECTION:	SHEET 1 OF 2	

D0902324.dwg:ALIGO AOS Base Mock-up, 42 in. PART PDM REV: X-007, DRAWING PDM REV: X-006



D0902324.dwg ACS Fiber Base Mock-up, 42 in. PART PDM REV. X-007, DRAWING PDM REV. X-006