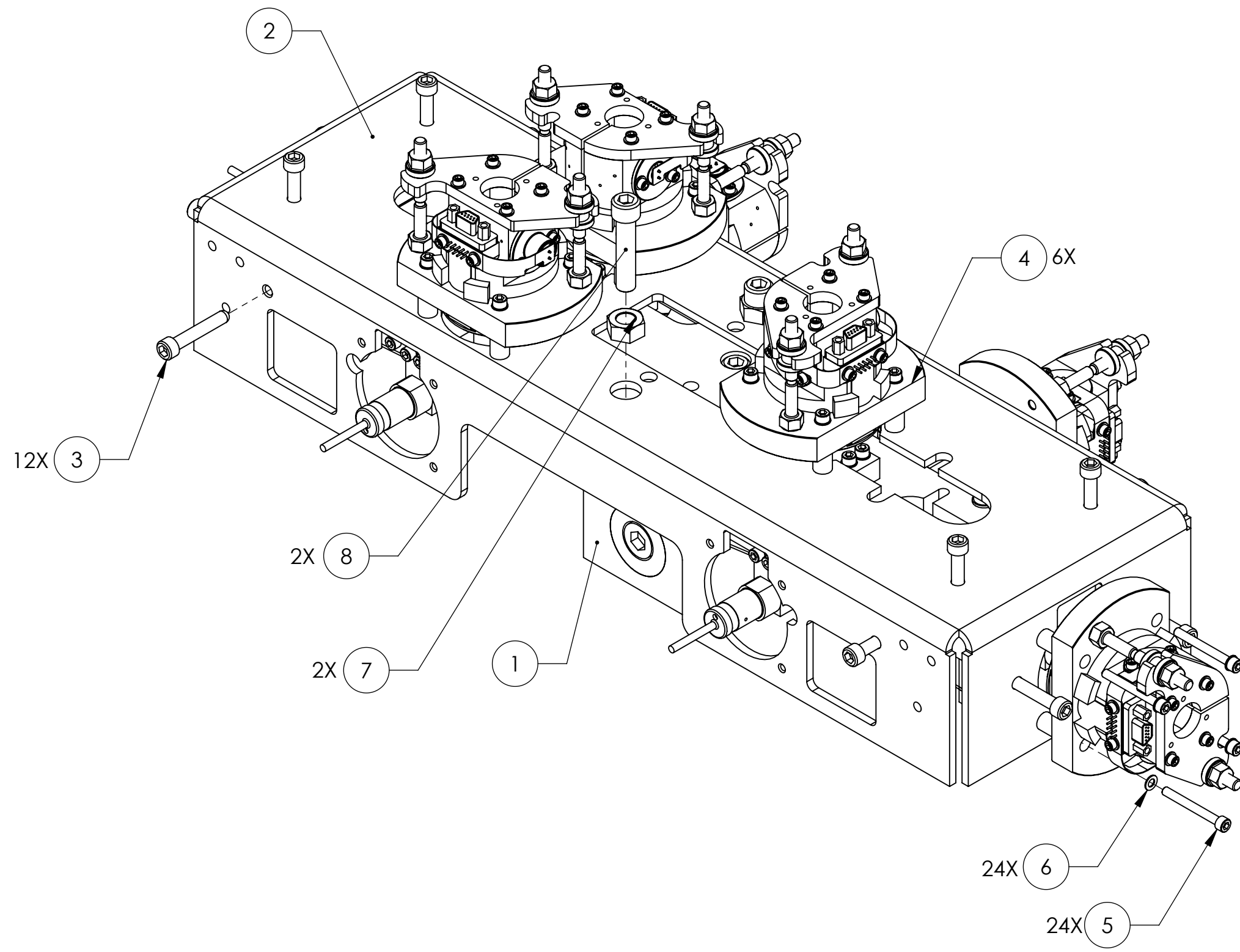


REV.	DATE	DCN #	DRAWING TREE #
A	28 JUN 2004	E040303-00	-
v1	30 OCT 2009	E0900354	E0900353
-	-	-	-



ITEM NO.	PART NUMBER	DESCRIPTION	MATERIAL	REQ	SPARE	TOTAL
8	-	SCREW, SOCKET HEAD CAP, 1/4-20 UNC-2A X 1.125 LONG	Ag-PLATED 300 SSTL	2	1	3
7	-	HEX NUT, 1/4-20	300 SSTL	2	1	3
6	-	WASHER, FLAT, #4 (NAS 620-C4L OR EQUIVALENT)	Material <not specified>	24	5	29
5	-	SCREW, SOCKET HEAD CAP, #4-40 UNC-2A X 1 LONG	Ag-PLATED 300 SSTL	24	5	29
4	D060218	BIRMINGHAM OSEM ASSY	--	6	-	6
3	D030025	SCREW, SOCKET HEAD CAP, #8-32 UNC-2A X 1 LONG, FULLY THREADED, ROUNDED END	Ag-PLATED 300 SSTL	12	3	15
2	D020239	HSTS COILHOLDER (TABLECLOTH)	304, 316 OR 302 SSTL	1	-	1
1	D020534	UPPER MASS ASSEMBLY	N/A	1	-	1
<b>PARTS LIST</b>						

CALIFORNIA INSTITUTE OF TECHNOLOGY MASSACHUSETTS INSTITUTE OF TECHNOLOGY		<b>PART NAME</b> UPPER MASS AND COIL HOLDER ASSEMBLY				
<b>SYSTEM</b> ADVANCED LIGO	<b>SUB-SYSTEM</b> SUS	<b>DESIGNER</b> M. MEYER	15 SEP 2009	<b>SIZE</b> c	<b>DWG. NO.</b> D020535	<b>REV.</b> v1
<b>NEXT ASSY</b> D020700		<b>DRAFTER</b> B. MOORE	29 OCT 2009	<b>CHECKER</b> M. MEYER		30 OCT 2009
<b>APPROVAL</b>		SCALE: NTS		PROJECTION:		SHEET 1 OF 1