

D0902249 Stage1-2 Vertical Displacement Sensor Mount, PART PDM REV: X-010, DRAWING PDM REV: X-004

**NOTES CONTINUED:**

5. SCRIBE, ENGRAVE, OR MECHANICALLY STAMP (NO INKS OR DYES) DRAWING PART NUMBER, REVISION (AND VARIANT OR "TYPE" IF APPLICABLE ON NOTED SURFACE OF PART FOLLOWED ON THE NEXT LINE WITH A THREE DIGIT SERIAL NUMBER. SERIAL NUMBERS START AT 001 FOR THE FIRST ARTICLE AND PROCEED CONSECUTIVELY. USE MINIMUM 0.12 HIGH CHARACTERS, UNLESS THE SIZE OF THE PART DICTATES SMALLER CHARACTERS. A VIBRATORY TOOL MAY BE USED. EXAMPLE DXXXXXXX-VY, TYPE-XX, S/N XXX.

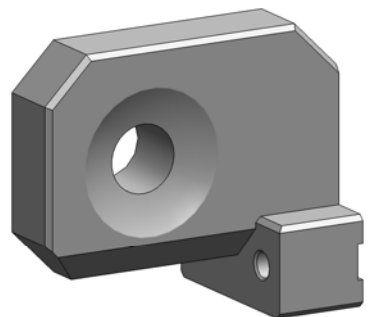
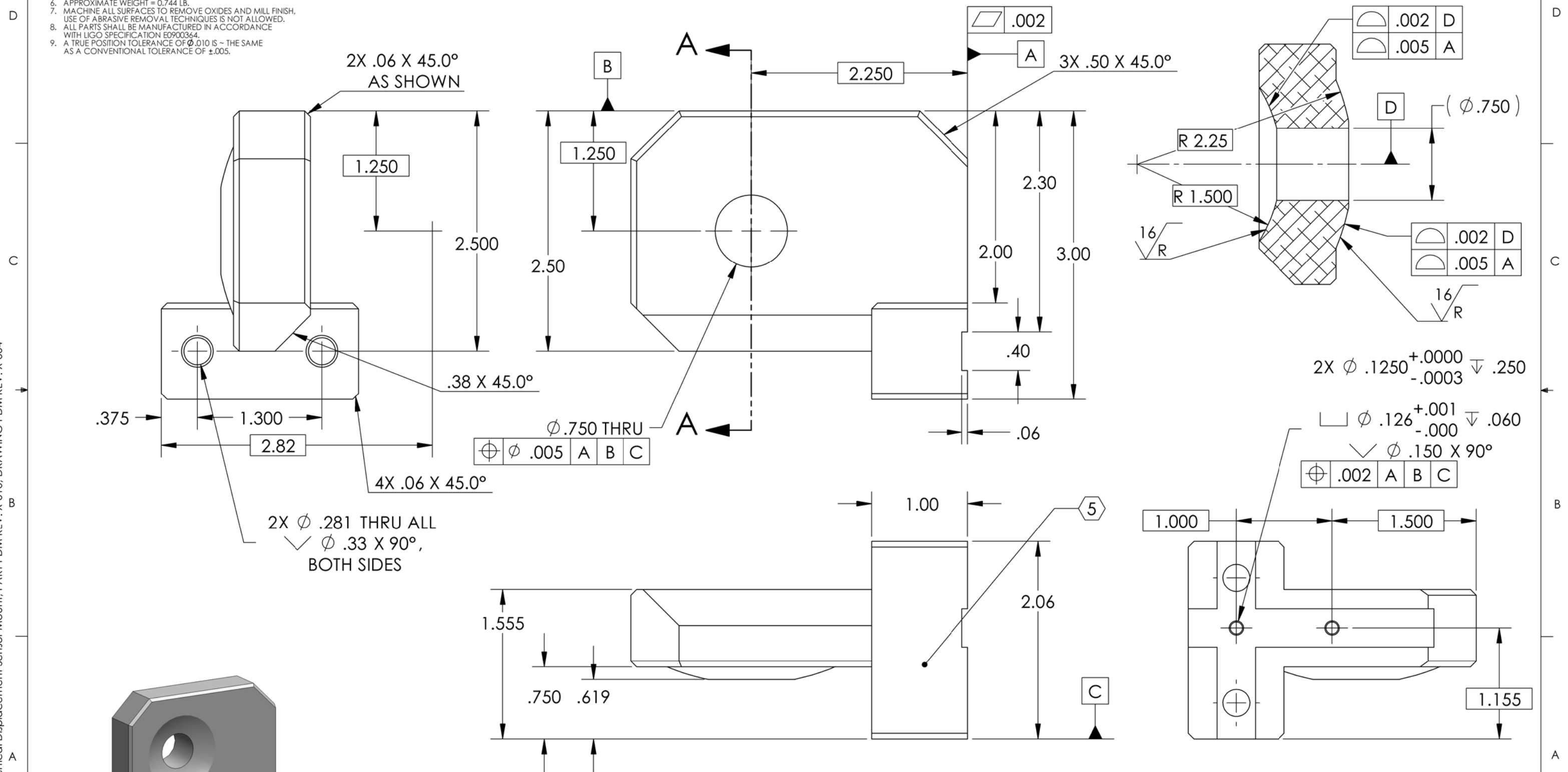
6. APPROXIMATE WEIGHT = 0.744 LB.

7. MACHINE ALL SURFACES TO REMOVE OXIDES AND MILL FINISH. USE OF ABRASIVE REMOVAL TECHNIQUES IS NOT ALLOWED.

8. ALL PARTS SHALL BE MANUFACTURED IN ACCORDANCE WITH LIGO SPECIFICATION E0900364.

9. A TRUE POSITION TOLERANCE OF  $\phi .010$  IS ~ THE SAME AS A CONVENTIONAL TOLERANCE OF  $\pm .005$ .

REV.	DATE	DCN #	DRAWING TREE #
v1	01 Mar. 2010	E1000049	E1000025
v2	23 June 2010	E1000227	E1000025



NOTES AND TOLERANCES: (UNLESS OTHERWISE SPECIFIED)	
DIMENSIONS ARE IN INCHES	
1. INTERPRET DRAWING PER ASME Y14.5-1994, 2. BREAK ALL CORNERS AND EDGES $.03 \times 45^\circ$ .	
3. DO NOT SCALE FROM DRAWING.	
4. ALL MACHINING FLUIDS MUST BE FULLY SYNTHETIC, FULLY WATER SOLUBLE AND FREE OF SULFUR, SILICONE, AND CHLORINE.	
TOLERANCES: .XX $\pm .015$ .XXX $\pm .005$	
ANGULAR $\pm .5^\circ$	
MATERIAL 6061-T6 Al	FINISH 32 $\mu$ inch

LIGO CALIFORNIA INSTITUTE OF TECHNOLOGY MASSACHUSETTS INSTITUTE OF TECHNOLOGY		PART NAME STAGE 1-2, VERTICAL DISPLACEMENT SENSOR MOUNT	
SYSTEM ADVANCED LIGO	SUB-SYSTEM SEI	DESIGNER S.BARNUM 01 Mar. 2010	SIZE DWG. NO. B D0902249
NEXT ASSY D0902534	CHECKER F.MATICHARD 01 Mar. 2010	APPROVAL K.MASON 01 Mar. 2010	REV. v2
SCALE: 1:1		PROJECTION:  SHEET 1 OF 1	