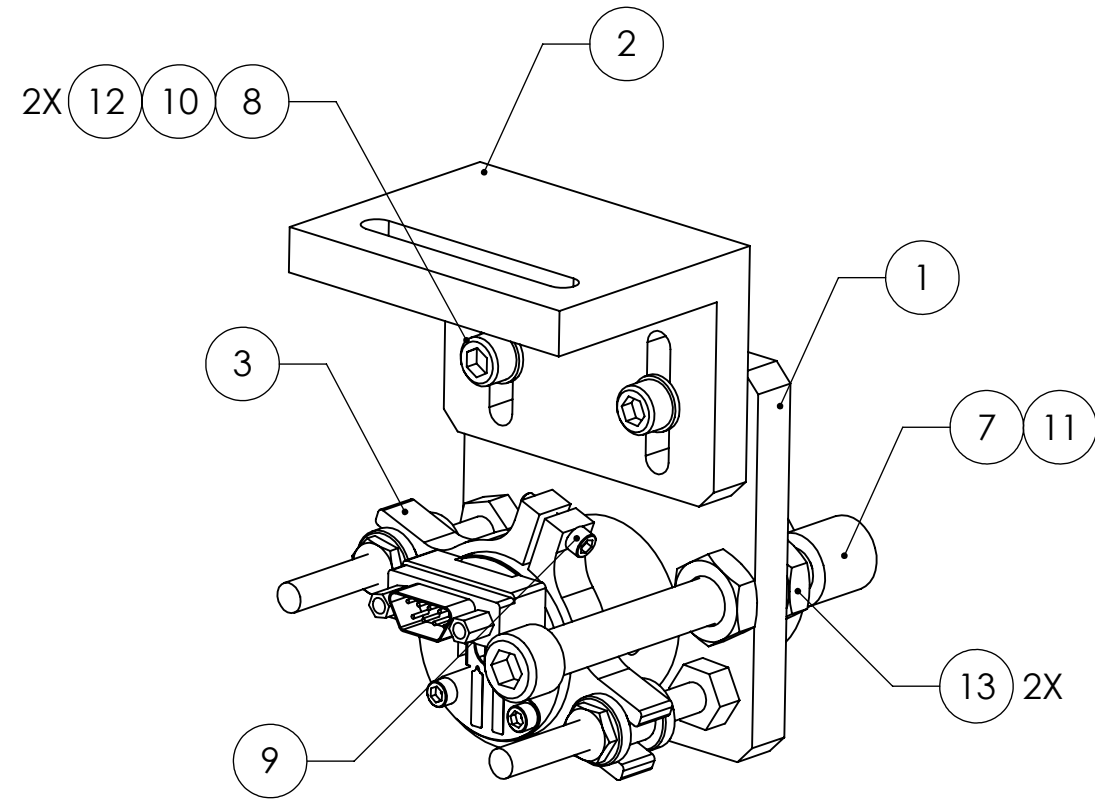


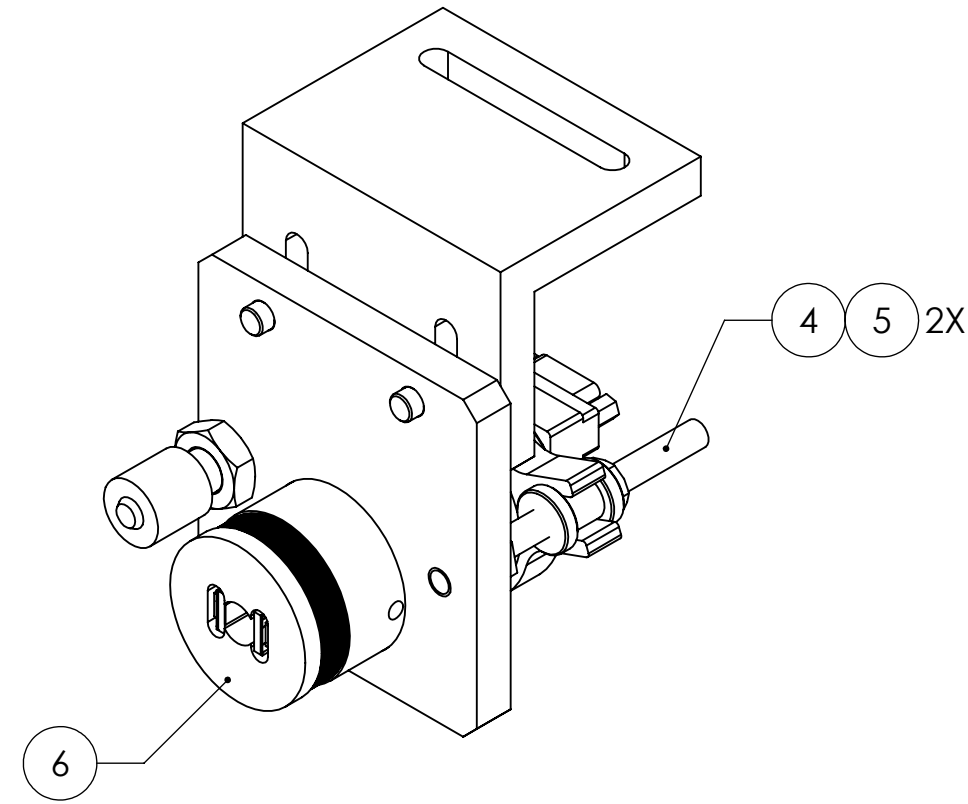
D0902207\_AdvLIGO\_SUS\_HSTS\_Upper AOSEM Alignment Assembly, Test Mass, PART PDM REV: X-017, DRAWING PDM REV: X-015

**NOTES:**  
 ① HELICOILS TO BE INSTALLED INTO ITEM NO. 1 BY LIGO PRIOR TO ASSEMBLY AND AFTER ALL PARTS ARE CLEANED AND BAKED.  
 ② RIGHT HAND CONFIGURATION IDENTICAL EXCEPT ITEM NO. 1 IS REVERSED IN ORDER TO KEEP EQ STOP AWAY FROM CHAMFERED EDGE OF MASS.

REV.	DATE	DCN #	DRAWING TREE #
v1	11 OCT 2009	-	E0900353
v2	13 MAY 2010	E0900505	E0900353
-	-	-	-



② LEFT HAND CONFIGURATION



REVERSE ISOMETRIC VIEW

13	-	JAM NUT, 1/4-20	300 SSSL	2	-	2
12	1185-2EN246	HELICOIL, #8-32 X 0.246 LONG (T)	NITRONIC 60	2	1	3
11	1185-4EN250	HELICOIL, 1/4-20 X 0.25 LONG (T)	NITRONIC 60	1	1	2
10	-	WASHER, FLAT, #8 (NAS 620-C8 OR EQUIVALENT)	300 SSSL	2	-	2
9	-	SCREW, SOCKET HEAD CAP, #2-56 UNC-2A X 0.375 LONG	300 SSSL	1	-	1
8	-	SCREW, SOCKET HEAD CAP, #8-32 UNC-2A X 0.625 LONG	300 SSSL	2	-	2
7	D0900932	EARTHQUAKE STOP FOR GLASS (GLASS TIP), SIMPLIFIED, 2 INCH	N/A	1	-	1
6	D0901065	AOSEM ASSEMBLY	N/A	1	-	1
5	D1000660	ADJUSTMENT NUT	PEEK	2	-	2
4	D1000659	ADJUSTER SHAFT	304, 316 OR 302 SSSL	2	-	2
3	D0901548	AOSEM ADJUSTMENT COLLAR	6061-T6 AI	1	-	1
2	D0902416	AOSEM ALIGNMENT BRACKET MOUNT, INT. MASS	6061-T6 AI	1	-	1
1	D0902417	AOSEM ALIGNMENT BRACKET (T)	6061-T6 AI	1	-	1

ITEM NO.	PART NUMBER	DESCRIPTION	MATERIAL	REQ	SPARE	TOTAL
----------	-------------	-------------	----------	-----	-------	-------

PARTS LIST

CALIFORNIA INSTITUTE OF TECHNOLOGY MASSACHUSETTS INSTITUTE OF TECHNOLOGY		PART NAME <b>UPPER AOSEM ALIGNMENT ASSY, TEST MASS</b>			
SYSTEM <b>ADVANCED LIGO</b>	SUB-SYSTEM <b>SUS</b>	DESIGNER W. RASCH	19 SEP 2009	SIZE DWG. NO. <b>B</b>	REV. <b>v2</b>
DRAFTER B. MOORE	16 APR 2009	CHECKER M. MEYER	19 APR 2009	<b>D0902207</b>	
NEXT ASSY <b>D020700</b>	APPROVAL	SCALE: 1:1	PROJECTION:	SHEET 1 OF 1	