

4

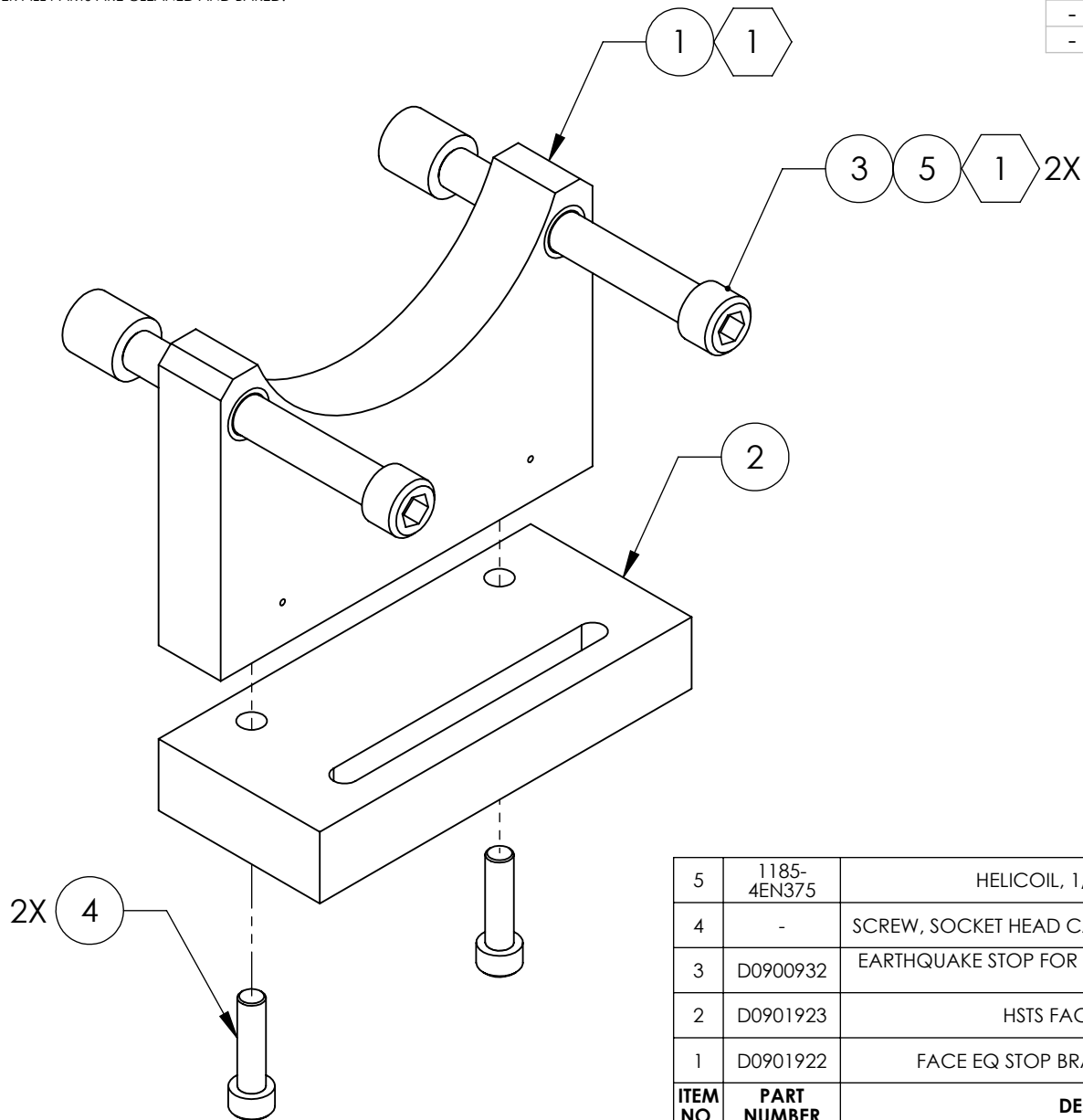
3

2

1

NOTES:
① HELICOILS TO BE INSTALLED INTO ITEM NO. 1 BY LIGO PRIOR TO ASSEMBLY AND AFTER ALL PARTS ARE CLEANED AND BAKED.

REV.	DATE	DCN #	DRAWING TREE #
v1	16 JUN 2010	E0900504	E0900353
-	-	-	-
-	-	-	-



5	1185-4EN375	HELICOIL, 1/4-20 X 0.375 LONG ①	NITRONIC 60	2	1	3
4	-	SCREW, SOCKET HEAD CAP, #8-32 UNC-2A X 0.625 LONG	300 SSSL	2	-	2
3	D0900932	EARTHQUAKE STOP FOR GLASS (GLASS TIP), SIMPLIFIED, 2 INCH	N/A	2	-	2
2	D0901923	HSTS FACE EQ STOP BASE	6061-T6 Al	1	-	1
1	D0901922	FACE EQ STOP BRACKET, HSTS LOWER MASS ①	6061-T6 Al	1	-	1
ITEM NO.	PART NUMBER	DESCRIPTION	MATERIAL	REQ	SPARE	TOTAL

PARTS LIST

LIGO CALIFORNIA INSTITUTE OF TECHNOLOGY MASSACHUSETTS INSTITUTE OF TECHNOLOGY		PART NAME FACE EQ STOP ASSY, TEST MASS	
SYSTEM ADVANCED LIGO	SUB-SYSTEM SUS	DESIGNER W. RASCH	14 OCT 2009
NEXT ASSY D020700		DRAFTER W. RASCH	14 OCT 2009
		CHECKER M. MEYER	14 OCT 2009
		APPROVAL	
		SIZE A	DWG. NO. D0902205
		SCALE: 1:1	PROJECTION:
			REV. v1
			SHEET 1 OF 1

4

3

2

1