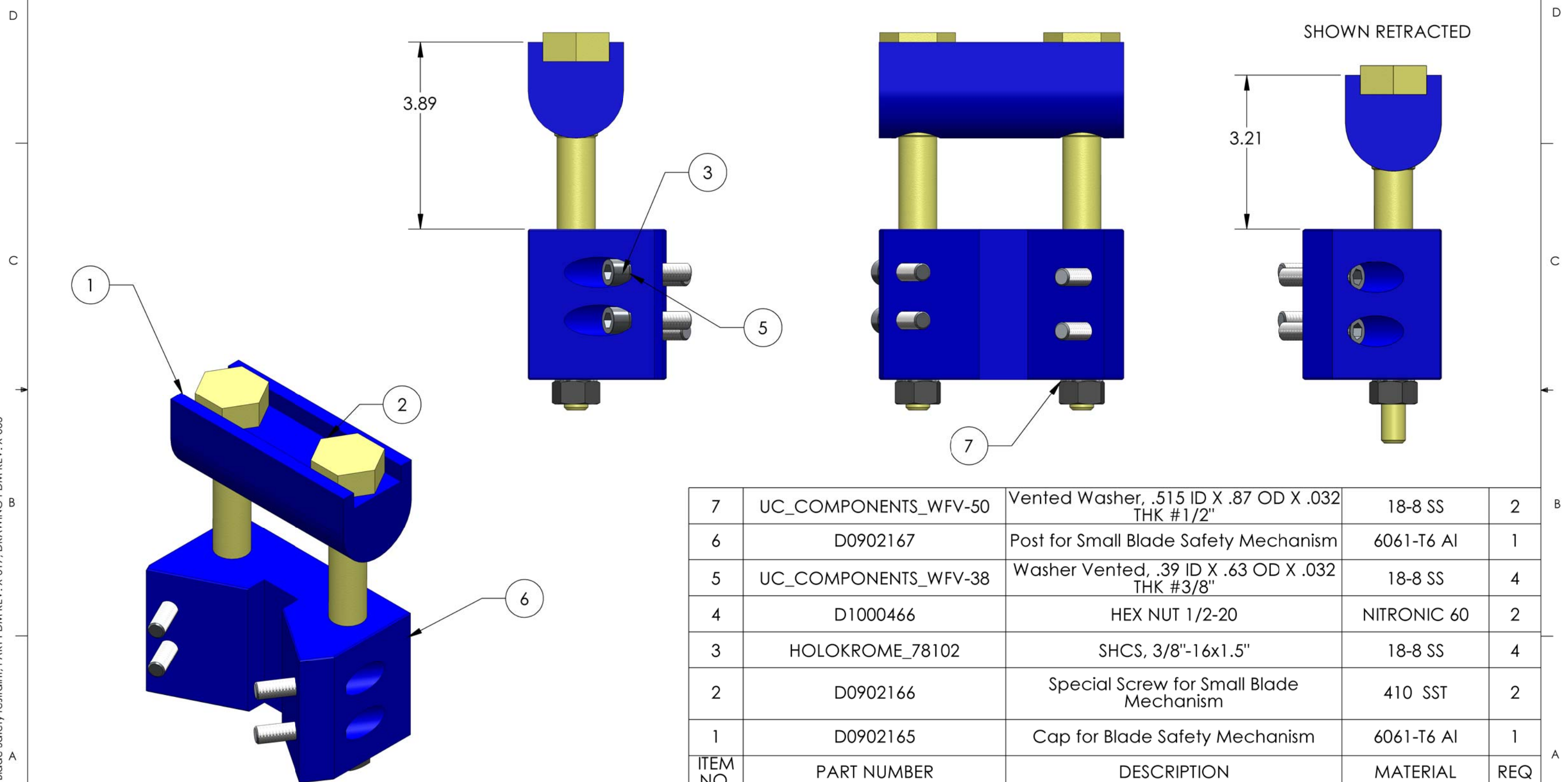


NOTES CONTINUED:
 5. VENDOR REFERENCES ARE PROVIDED AS EXAMPLES OF PARTS MEETING ALL REQUIRED SPECIFICATIONS. EQUIVALENTS ARE ALWAYS ACCEPTABLE UNLESS OTHERWISE SPECIFIED.
 6. REFER TO LIGO E0900357 FOR ASSEMBLY AND LOADING PROCEDURE.

REV.	DATE	DCN #	DRAWING TREE #
v1	01 Mar. 2010	E1000026	E1000025
v2	22 June 2010	E1000225	E1000025
v3	17 Nov. 2010	E1000729	E1000025



ITEM NO.	PART NUMBER	DESCRIPTION	MATERIAL	REQ
7	UC_COMPONENTS_WFV-50	Vented Washer, .515 ID X .87 OD X .032 THK #1/2"	18-8 SS	2
6	D0902167	Post for Small Blade Safety Mechanism	6061-T6 Al	1
5	UC_COMPONENTS_WFV-38	Washer Vented, .39 ID X .63 OD X .032 THK #3/8"	18-8 SS	4
4	D1000466	HEX NUT 1/2-20	NITRONIC 60	2
3	HOLOKROME_78102	SHCS, 3/8"-16x1.5"	18-8 SS	4
2	D0902166	Special Screw for Small Blade Mechanism	410 SST	2
1	D0902165	Cap for Blade Safety Mechanism	6061-T6 Al	1

PARTS LIST

NOTES AND TOLERANCES: (UNLESS OTHERWISE SPECIFIED)	
DIMENSIONS ARE IN INCHES	
1. INTERPRET DRAWING PER ASME Y14.5-1994.	
2. REMOVE ALL SHARP EDGES, R.02 MIN.	
3. DO NOT SCALE FROM DRAWING.	
4. ALL MACHINING FLUIDS MUST BE FULLY SYNTHETIC, FULLY WATER SOLUBLE AND FREE OF SULFUR, SILICONE, AND CHLORINE.	
TOLERANCES: .XX ± .015 .XXX ± .005	
ANGULAR ± 0.5°	
MATERIAL	N/A
FINISH	N/A μinch

CALIFORNIA INSTITUTE OF TECHNOLOGY MASSACHUSETTS INSTITUTE OF TECHNOLOGY		PART NAME		Stage 1-2 Blade Safety Restraint	
SYSTEM	ADVANCED LIGO	SUB-SYSTEM	SEI	DESIGNER	A.LEROUX 01 Feb. 2010
NEXT ASSY	D0901182	CHECKER	F.MATICHARD 01 Feb. 2010	APPROVAL	K.MASON 01 Feb. 2010
SIZE	B	DWG. NO.	D0902164		REV.
SCALE	1:2	PROJECTION			v3
					SHEET 1 OF 1

D0902164 Stage 1-2 Blade Safety Restraint, PART PDM REV: X-017, DRAWING PDM REV: X-005