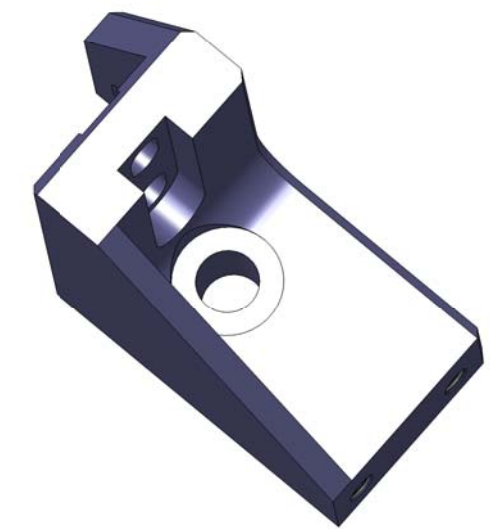
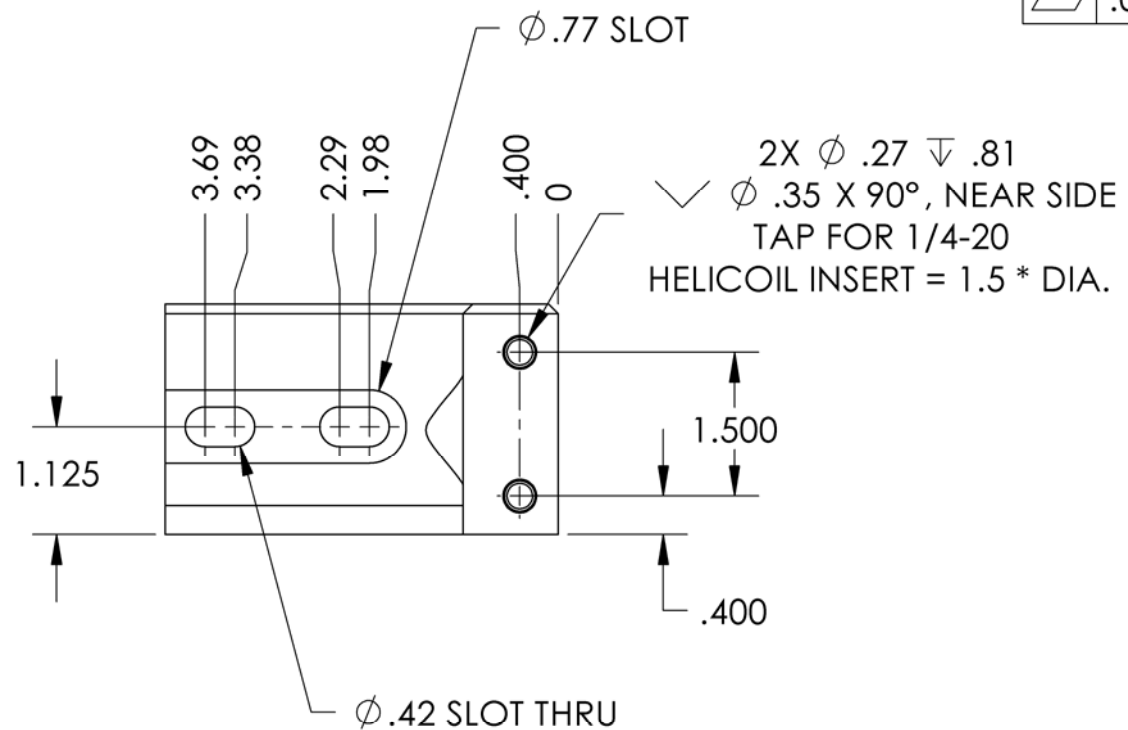
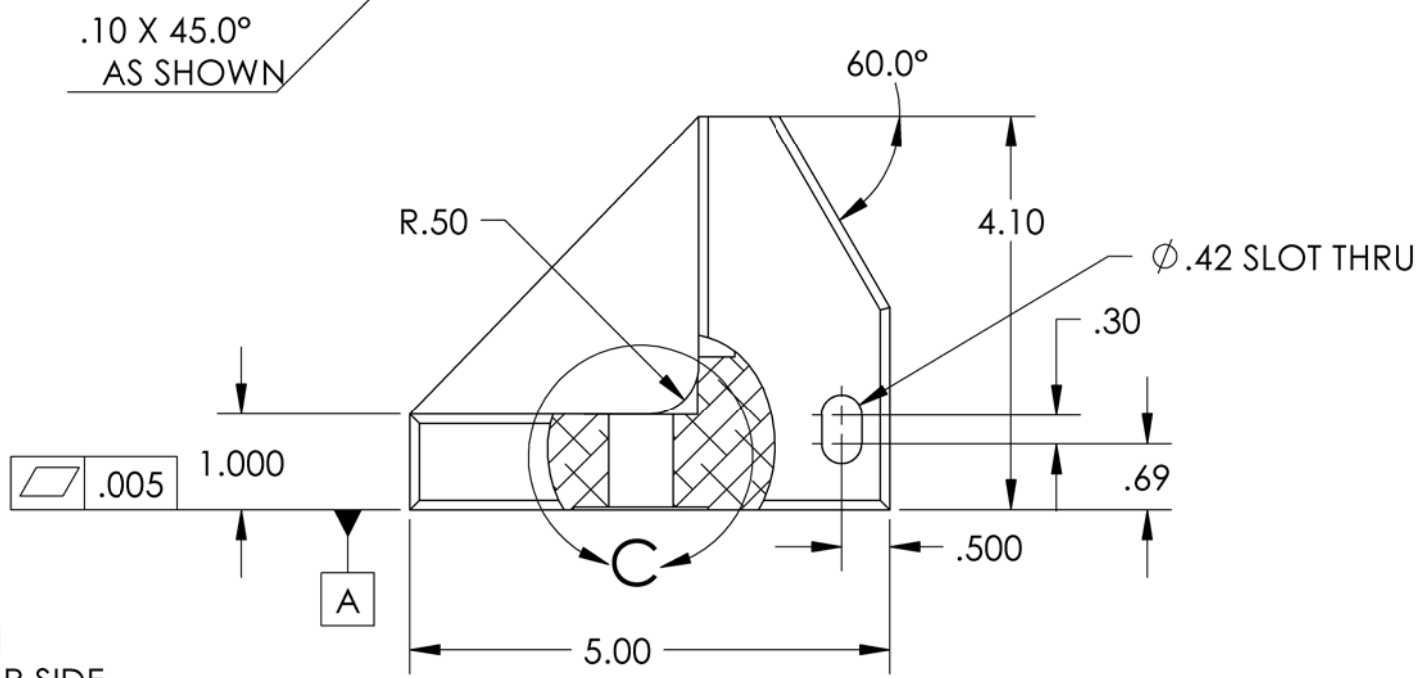
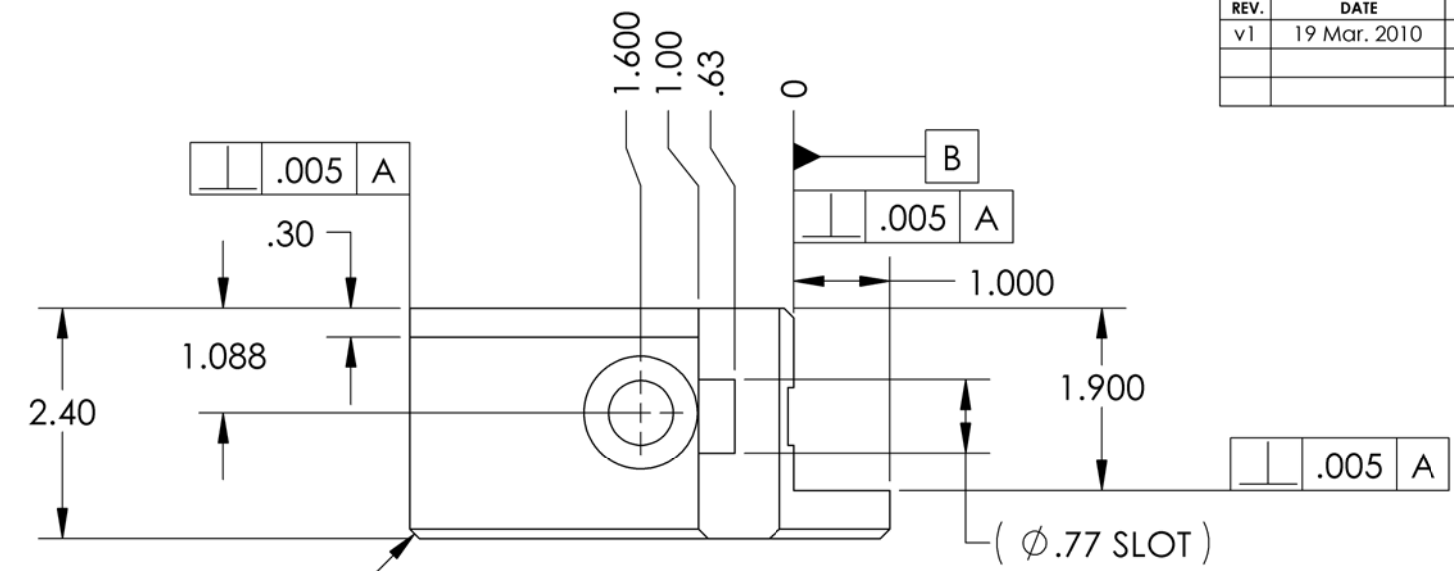
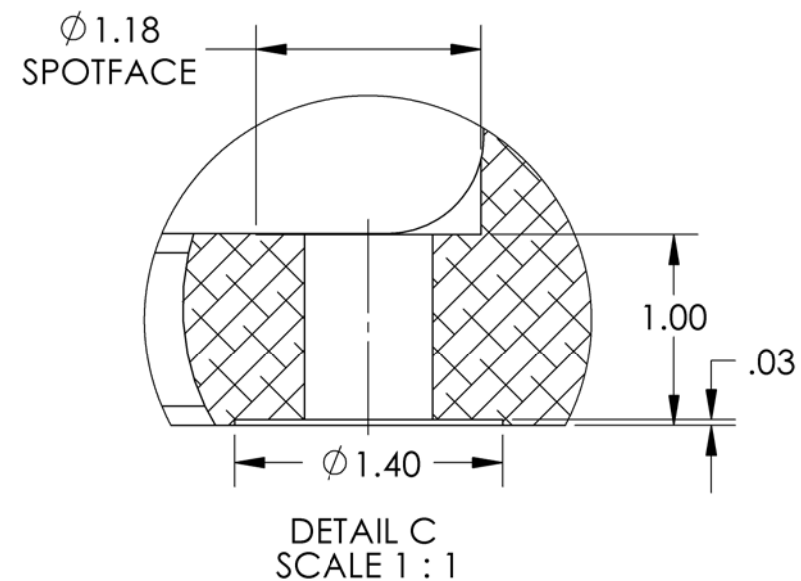


D0902162- Small Horizontal Actuator Slide Bracket, PART PDM REV: X-014, DRAWING PDM REV: X-003

NOTES CONTINUED:
 5. SCRIBE, ENGRAVE, OR MECHANICALLY STAMP (NO INKS OR DYES) DRAWING PART NUMBER, REVISION (AND VARIANT OR "TYPE" IF APPLICABLE ON NOTED SURFACE OF PART FOLLOWED ON THE NEXT LINE WITH A THREE DIGIT SERIAL NUMBER. SERIAL NUMBERS START AT 001 FOR THE FIRST ARTICLE AND PROCEED CONSECUTIVELY. USE MINIMUM 0.12 HIGH CHARACTERS, UNLESS THE SIZE OF THE PART DICTATES SMALLER CHARACTERS. A VIBRATORY TOOL MAY BE USED.
 EXAMPLE DXXXXXX-VY, TYPE-XX, S/N XXX.
 6. APPROXIMATE WEIGHT = 0.800 LB.
 7. MACHINE ALL SURFACES TO REMOVE OXIDES AND MILL FINISH. USE OF ABRASIVE REMOVAL TECHNIQUES IS NOT ALLOWED.
 8. ALL PARTS SHALL BE MANUFACTURED IN ACCORDANCE WITH LIGO SPECIFICATION E0900364.

REV.	DATE	DCN #	DRAWING TREE #
v1	19 Mar. 2010	E1000049	E1000025



NOTES AND TOLERANCES: (UNLESS OTHERWISE SPECIFIED)				LIGO		PART NAME	
DIMENSIONS ARE IN INCHES				CALIFORNIA INSTITUTE OF TECHNOLOGY		SMALL HORIZONTAL ACTUATOR	
TOLERANCES: .XX ± .015 .XXX ± .005				MASSACHUSETTS INSTITUTE OF TECHNOLOGY		SLIDE BRACKET, dLIGO BSC ISI	
ANGULAR ± .5°				SYSTEM		DESIGNER	
1. INTERPRET DRAWING PER ASME Y14.5-1994, 2. BREAK ALL EDGES AND CORNERS .03 X 45°. 3. DO NOT SCALE FROM DRAWING. 4. ALL MACHINING FLUIDS MUST BE FULLY SYNTHETIC, FULLY WATER SOLUBLE AND FREE OF SULFUR, SILICONE, AND CHLORINE.				ADVANCED LIGO		S.BARNUM 19 Mar. 2010	
MATERIAL				SUB-SYSTEM		SIZE DWG. NO.	
6061-T6 Al				SEI		B D0902162	
FINISH				NEXT ASSY		REV.	
63 μinch				D0902530		v1	
APPROVAL				SCALE: 1:2		PROJECTION:	
K.MASON 19 Mar. 2010				FIRST ANGLE		SHEET 1 OF 1	