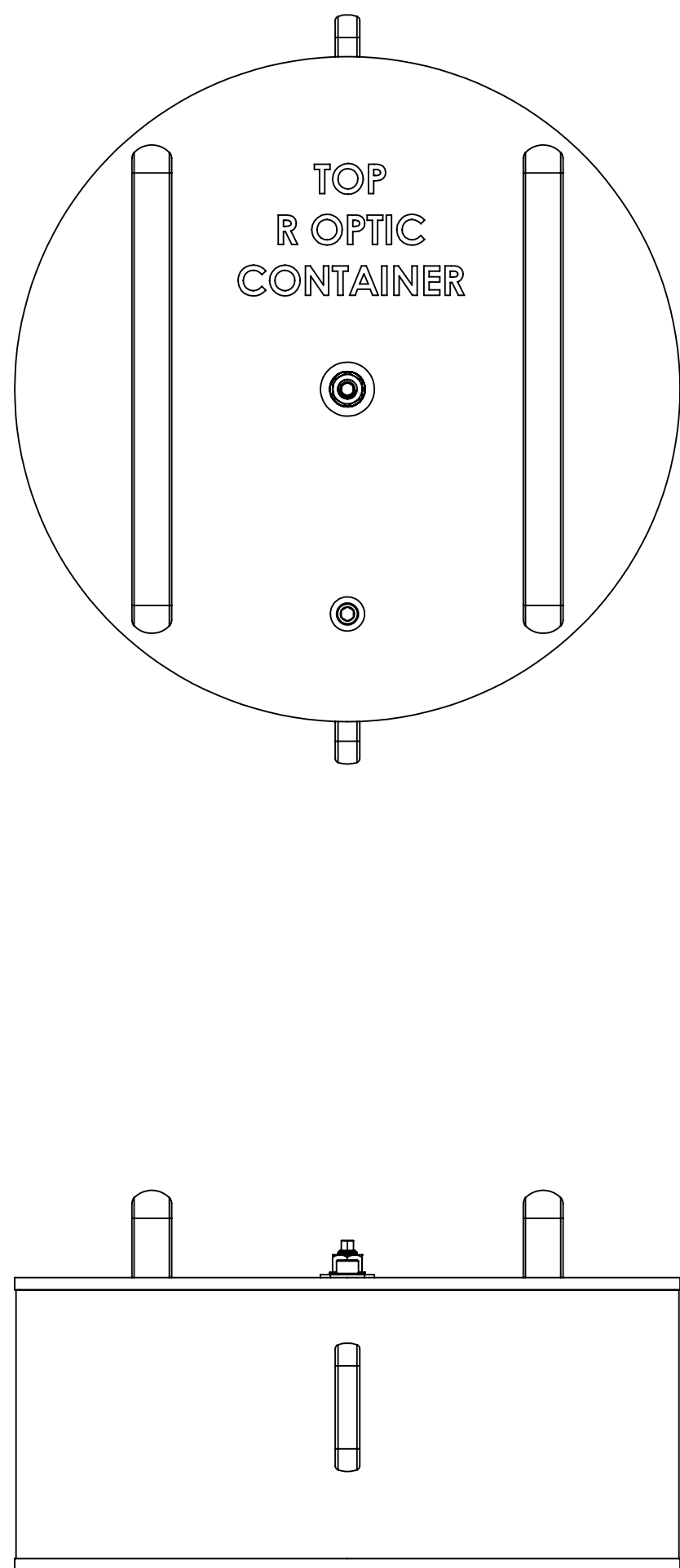


NOTES CONTINUED:
 ⑤ SCRIBE, ENGRAVE, OR MECHANICALLY STAMP (NO INKS OR DYES) DRAWING PART NUMBER, REVISION (AND VARIANT OR "TYPE" IF APPLICABLE) ON NOTED SURFACE OF PART FOLLOWED ON THE NEXT LINE WITH A THREE DIGIT SERIAL NUMBER. SERIAL NUMBERS START AT 001 FOR THE FIRST ARTICLE AND PROCEED CONSECUTIVELY. USE MINIMUM 0.12" HIGH CHARACTERS, UNLESS THE SIZE OF THE PART DICTATES SMALLER CHARACTERS. A VIBRATORY TOOL MAY BE USED. EXAMPLE: DXXXXXX-VY, TYPE-XX, S/N XXX



REV.	DATE	DCN #	DRAWING TREE #
v1	21 OCT 2009	E0900366	
v2	13 NOV 2009	E0900412	
v3	29 APR 2010	E1000141	

ALT	D0902522-3	OVERSIZE LOCATING SLEEVE, R OPTIC, COC CONTAINER	PFA440HP	1	1
ALT	D0902522-3	OVERSIZE LOCATING SLEEVE, R OPTIC, COC CONTAINER	PFA440HP	1	1
ALT	D0902522-2	OVERSIZE LOCATING SLEEVE, R OPTIC, COC CONTAINER	PFA440HP	1	1
ALT	D0902522-1	OVERSIZE LOCATING SLEEVE, R OPTIC, COC CONTAINER	PFA440HP	1	1
ALT	D0902495	GUIDE, OPTIC, COC CONTAINER	PFA440HP	3	3
26	ROW Inc.	O-Ring, Base FM, .188 Thick X 16.375 ID	PFA Encapsulated Viton	2	2
25	ROW Inc.	O-Ring, Supporting Optic, SR, .275 Thick X 9.500 ID	PFA Encapsulated Viton	2	2
24	D0902536	PULL HANDLE, MODIFIED MC #1897A49	6061-T6 Al	2	2
23	D0902490	COVER, CENTRYCO CC-22-025-0050-013-DAE	301 SSSL	1	1
22	D0902331	RETAINER FOR CENTRYO COVER	304 SSSL	1	1
21	D0902330	PILOT FOR CENTRYO COVER	304 SSSL	1	1
20	D0902145	SHIPPING SLEEVE, R OPTIC, COC CONTAINER	6061-T6 Al	3	3
19	D0902144	OUTER SLEEVE, R OPTIC, COC CONTAINER	304 SSSL	1	1
18	D0902143	LOCATING SLEEVE, R OPTIC, COC CONTAINER	PFA440 HP (PRESHRUNK)	3	3
17	D0902142	LOCATING SHAFT, R OPTIC, COC CONTAINER	304 SSSL	3	3
16	D0902141	WEDGE PLATE, R OPTIC, COC OPTIC CONTAINER	6061-T6 Al	1	1
15	D0902140	TOP PLATE, R OPTIC, COC OPTIC CONTAINER	6061-T6 Al	1	1
14	D0902139	BASE PLATE, R OPTIC, COC OPTIC CONTAINER	6061-T6 Al	1	1
13	D0902028	THRUST PAD, WEDGE PLATE CLAMP, COC CONTAINER	17-4 PH SS	1	1
12	D0902027	PULL HANDLE, 337LB LOAD RATED	6061-T6 Al	2	2
11	D0902026	CLAMP, WEDGE PLATE, COC CONTAINER	300 SSSL	1	1
10	C-606-N	SCREW, SHC, 6-32 x 3/8, (UC Comp #C-606-N)	300 SSSL	4	4
9	98449A033	WASHER, LOCK, INT TOOTH 1/2", ASME B18.21.1 MC #98449A033	410 SSSL	1	1
8	98019A510	WASHER, FLAT, 1/2, MS15795-819, MC #98019A510	18-8 SSSL	1	1
7	98019A399	WASHER, FLAT, 3/8, MS15795-814, MC #98019A399	18-8 SSSL	3	3
6	92200A682	SCREW, SHC, 3/8-16 x 1 1/4, MS16995-82, MC #92200A682	18-8 SSSL	3	3
5	92200A630	SCREW, SHC, 5/16-18 x 1, MS16995-66, MC #92200A630	18-8 SSSL	4	4
4	92200A340	SCREW, SHC, 10-32 x 3/8, MS16995-9, MC #92200A340	18-8 SSSL	4	4
3	92200A144	SCREW, SHC, 6-32 x 1/4, MS16995-16, MC#92200A144	300 SSSL	4	4
2	90762A139	1/2 HEX NUT, MS51972-5, MC #90762A139	300 SSSL	1	1
1	1726A7	PULL HANDLE, MC #1726A7	304 SSSL	2	2

ITEM NO.	PART NUMBER	DESCRIPTION	MATERIAL	REQ	SPARE	TOTAL
PARTS LIST						

NOTES AND TOLERANCES: (UNLESS OTHERWISE SPECIFIED)	
DIMENSIONS ARE IN INCHES	1. INTERPRET DRAWING PER ASME Y14.5-1994. 2. REMOVE ALL SHARP EDGES, R.02 MIN. 3. DO NOT SCALE FROM DRAWING. 4. ALL MACHINING FLUIDS MUST BE FULLY SYNTHETIC, FULLY WATER SOLUBLE AND FREE OF SULFUR, SILICONE, AND CHLORINE.
TOLERANCES: .XX ± .01 .XXX ± .005	
ANGULAR ± 0.5°	
MATERIAL	N/A
FINISH	N/A μinch

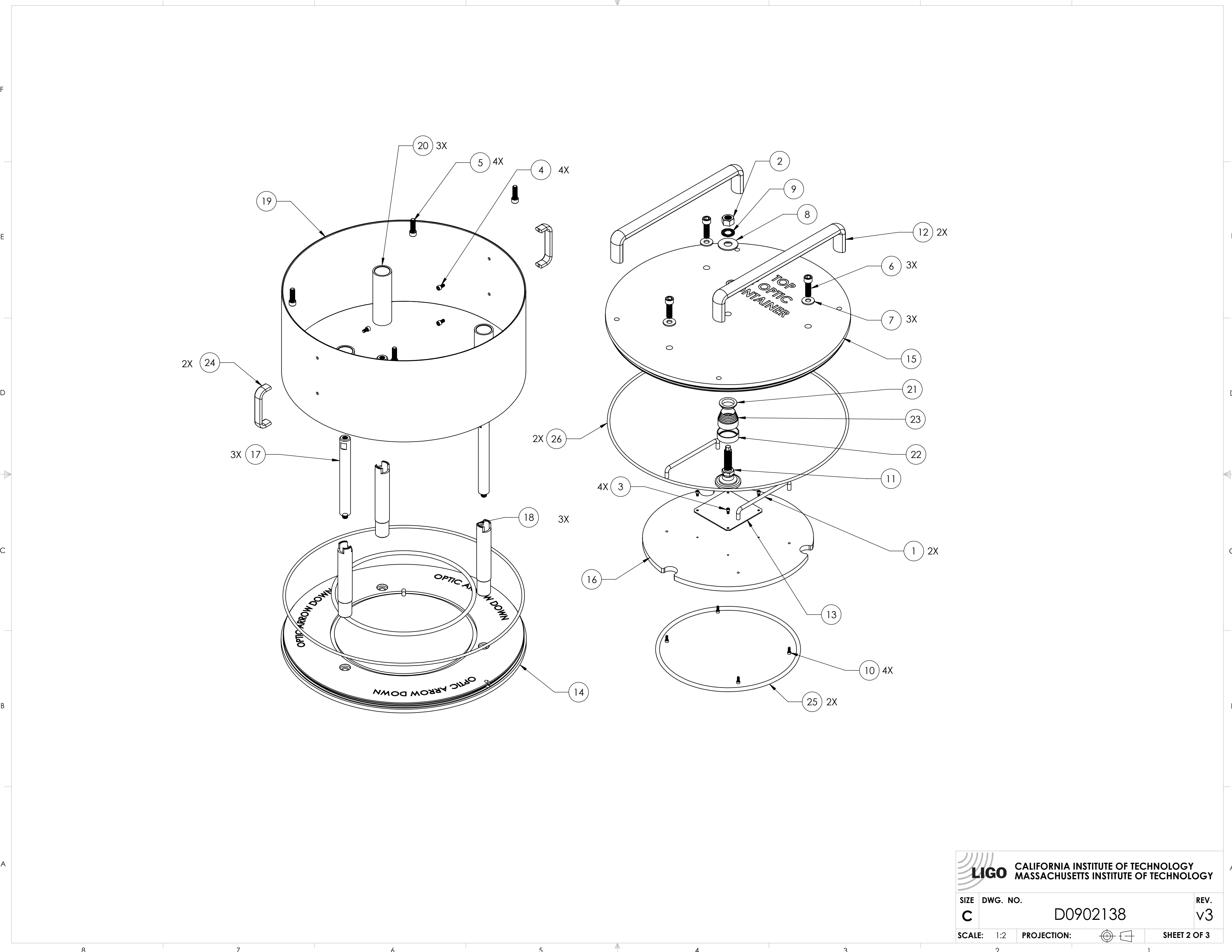
LIGO CALIFORNIA INSTITUTE OF TECHNOLOGY
 MASSACHUSETTS INSTITUTE OF TECHNOLOGY


SYSTEM: **ADVANCED LIGO** SUB-SYSTEM: **COC**

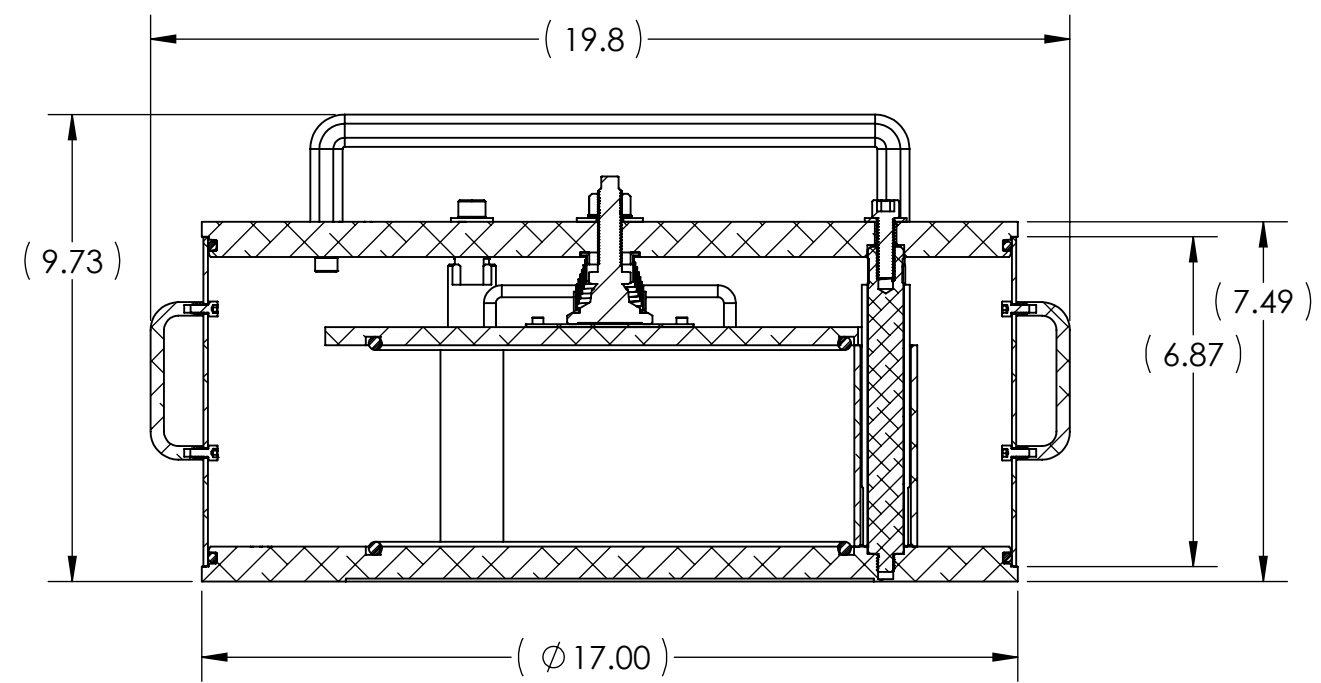
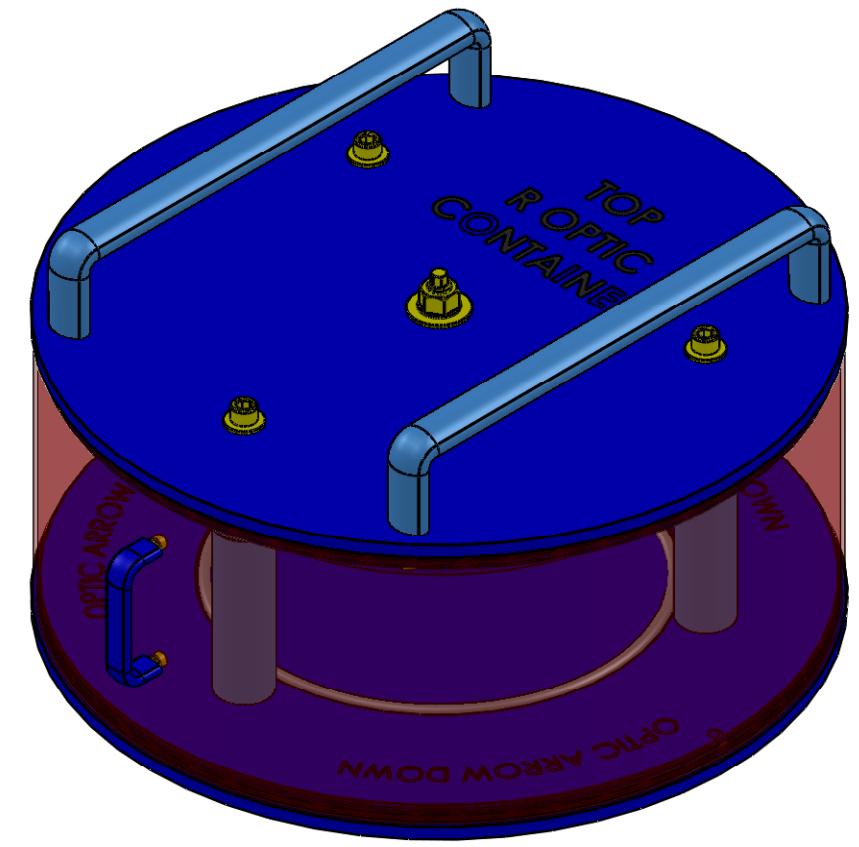
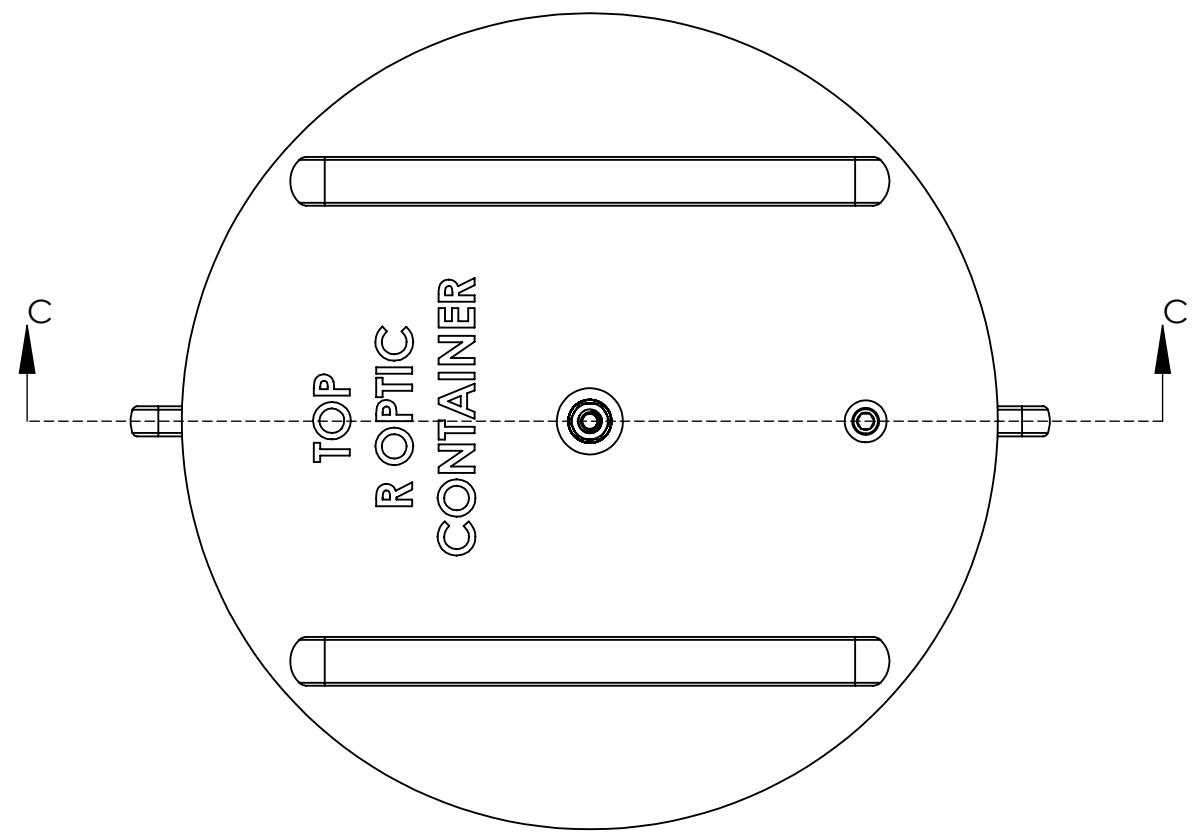
NEXT ASSY:

PART NAME: **R OPTIC, COC CONTAINER ASSEMBLY**

DESIGNER	K. BUCKLAND	23 AUG 2009	SIZE	DWG. NO.	REV.
DRAFTER	K. BUCKLAND	24 SEPT 2009	c	D0902138	v3
CHECKER	K. MAILAND	21 OCT 2009			
APPROVAL	C. TORRIE	21 OCT 2009	SCALE: 1:4	PROJECTION:	SHEET 1 OF 3



 CALIFORNIA INSTITUTE OF TECHNOLOGY MASSACHUSETTS INSTITUTE OF TECHNOLOGY		REV.
SIZE	DWG. NO.	v3
C	D0902138	
SCALE: 1:2	PROJECTION:	SHEET 2 OF 3



SECTION C-C

 LIGO CALIFORNIA INSTITUTE OF TECHNOLOGY MASSACHUSETTS INSTITUTE OF TECHNOLOGY		
SIZE	DWG. NO.	REV.
C	D0902138	v3
SCALE: 1:4	PROJECTION:	
		SHEET 3 OF 3