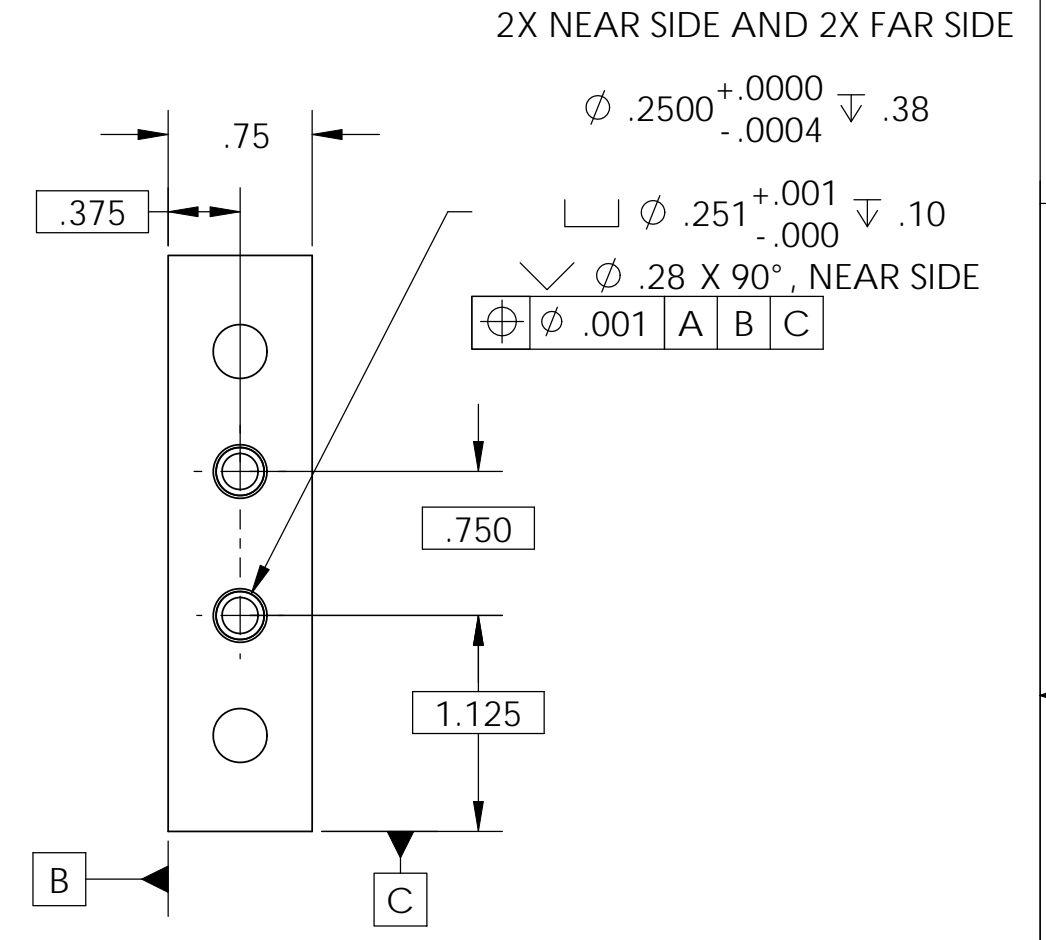
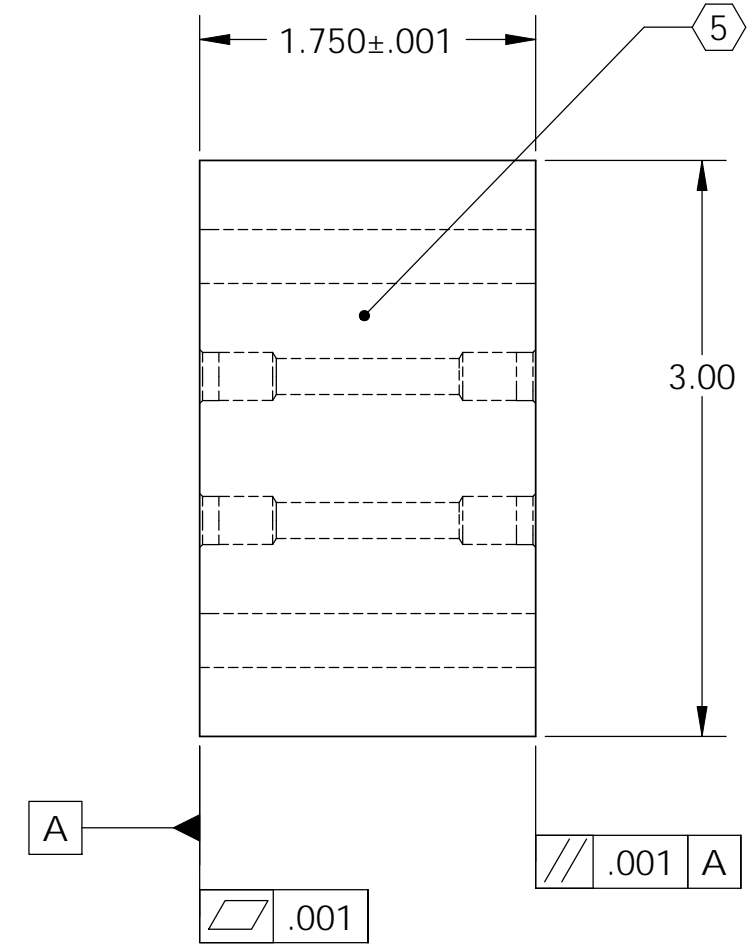
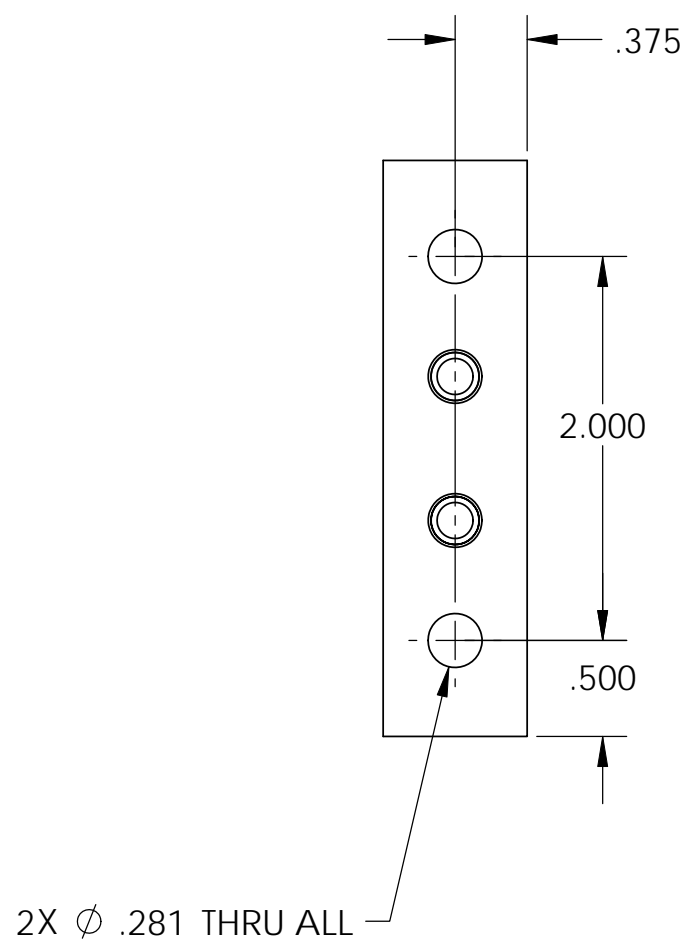


D0902131 Center Part for BSC-ISI Stage 0-1 Safety Mechanism, PART PDM REV: X-007, DRAWING PDM REV: X-004

REV.	DATE	DCN #	DRAWING TREE #
v1	26 Feb. 2010	E1000022	E1000026
v2	22 June 2010	E1000226	E1000025

NOTES CONTINUED:
 (5) SCRIBE, ENGRAVE, OR MECHANICALLY STAMP (NO INKS OR DYES) DRAWING PART NUMBER, REVISION (AND VARIANT OR "TYPE" IF APPLICABLE) ON NOTED SURFACE OF PART FOLLOWED ON THE NEXT LINE WITH A THREE DIGIT SERIAL NUMBER. SERIAL NUMBERS START AT 001 FOR THE FIRST ARTICLE AND PROCEED CONSECUTIVELY. USE MINIMUM 0.12 HIGH CHARACTERS, UNLESS THE SIZE OF THE PART DICTATES SMALLER CHARACTERS. A VIBRATORY TOOL MAY BE USED.
 EXAMPLE DXXXXXX-VY, TYPE-XX, S/N XXX.
 6. APPROXIMATE WEIGHT = 0.35 LB.
 7. MACHINE ALL SURFACES TO REMOVE OXIDES AND MILL FINISH. USE OF ABRASIVE REMOVAL TECHNIQUES (INCLUDING SANDING OR SCOURING FOR MATTE FINISH) IS NOT ALLOWED.
 8. ALL PARTS SHALL BE MANUFACTURED IN ACCORDANCE WITH LIGO SPECIFICATION E0900364.



NOTES AND TOLERANCES: (UNLESS OTHERWISE SPECIFIED)				LIGO CALIFORNIA INSTITUTE OF TECHNOLOGY MASSACHUSETTS INSTITUTE OF TECHNOLOGY		PART NAME	
DIMENSIONS ARE IN INCHES		1. INTERPRET DRAWING PER ASME Y14.5-1994. 2. REMOVE ALL SHARP EDGES, R.02 MIN.		ADVANCED LIGO		Center Part for BSC-ISI Stage 0-1 Safety Mechanism	
TOLERANCES: .XX ± .015 .XXX ± .005		3. DO NOT SCALE FROM DRAWING. 4. ALL MACHINING FLUIDS MUST BE FULLY SYNTHETIC, FULLY WATER SOLUBLE AND FREE OF SULFUR, SILICONE, AND CHLORINE.		SEI		DESIGNER	F.MATICHARD 01 Feb. 2010
ANGULAR ± 0.5°		MATERIAL	6061-T6 Al	FINISH	32 μinch	DRAFTER	M.HILLARD 01 Feb. 2010
				NEXT ASSY	D0901872	CHECKER	A.STEIN 01 Feb. 2010
						APPROVAL	K.MASON 01 Feb. 2010
						SIZE	DWG. NO.
						B	D0902131
						REV.	v2
						SCALE: 1:1	PROJECTION:
						SHEET 1 OF 1	