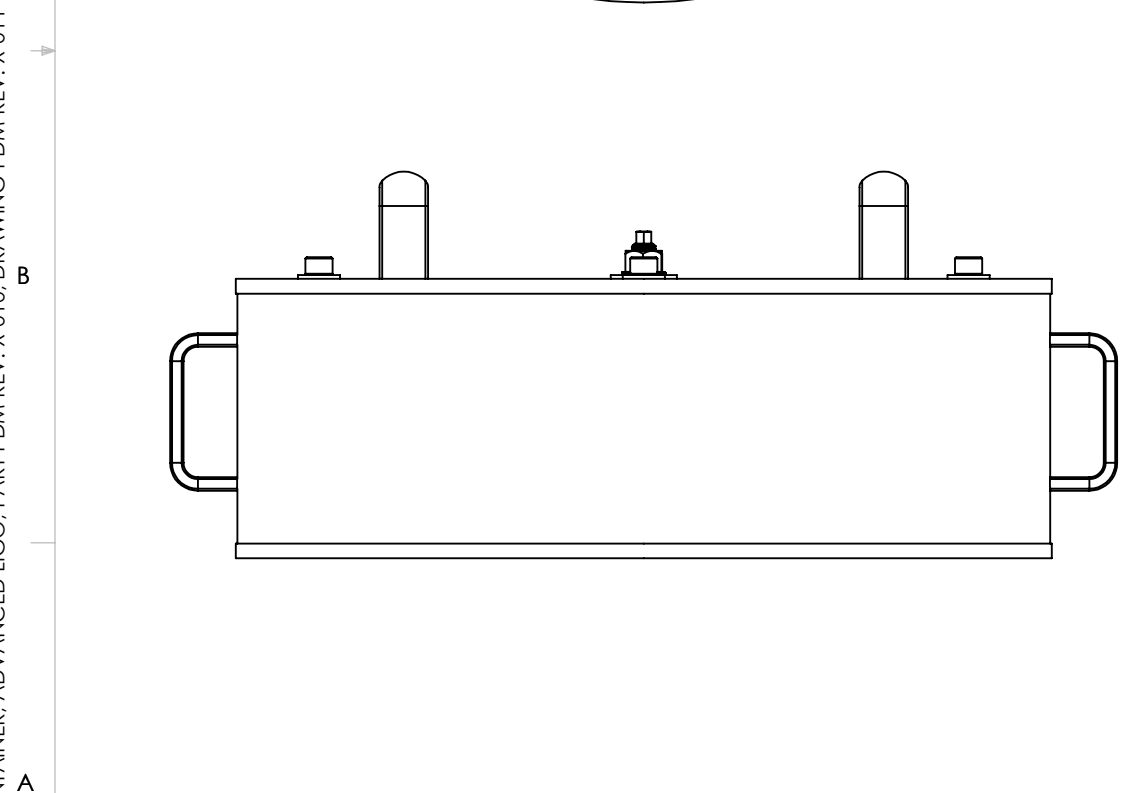
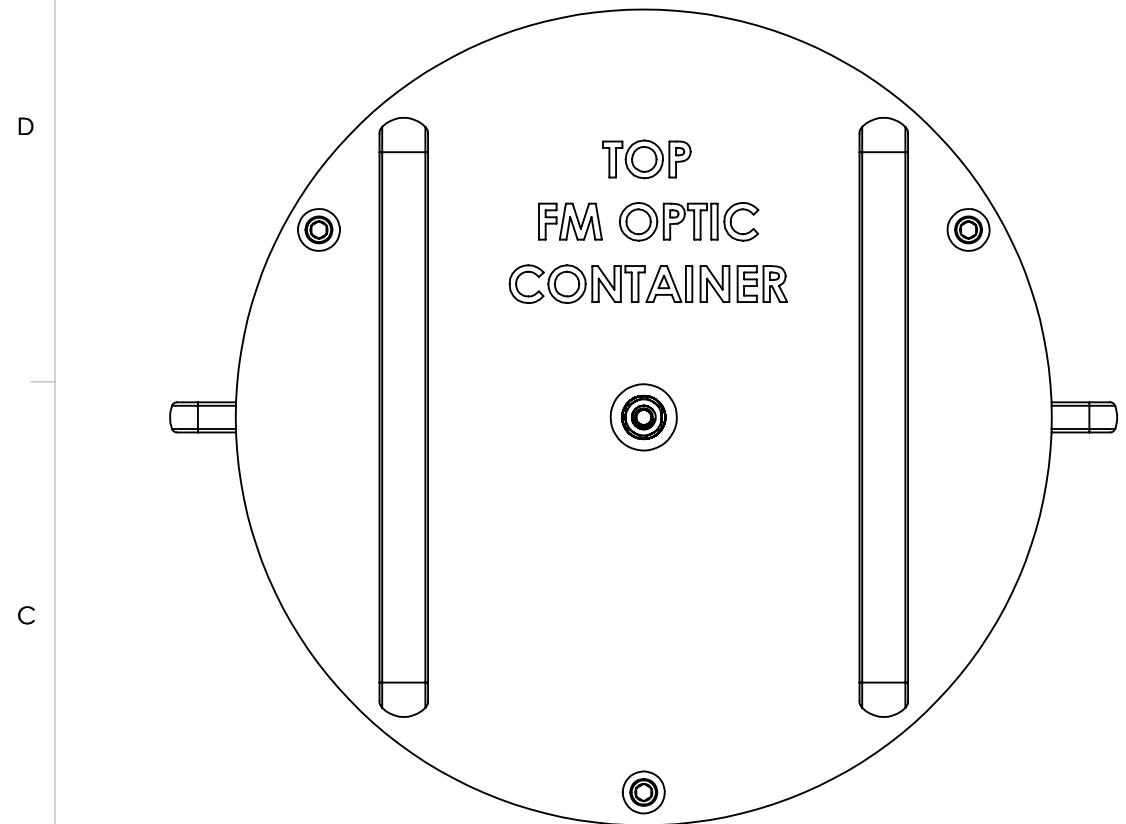


D0902120 FM, COC CONTAINER, ADVANCED LIGO, PART PDM REV: X-010, DRAWING PDM REV: X-011

REV.	DATE	DCN #	DRAWING TREE #
v1	23 SEPT 2009	E0900365	
v2	13 NOV 2009	E0900412	



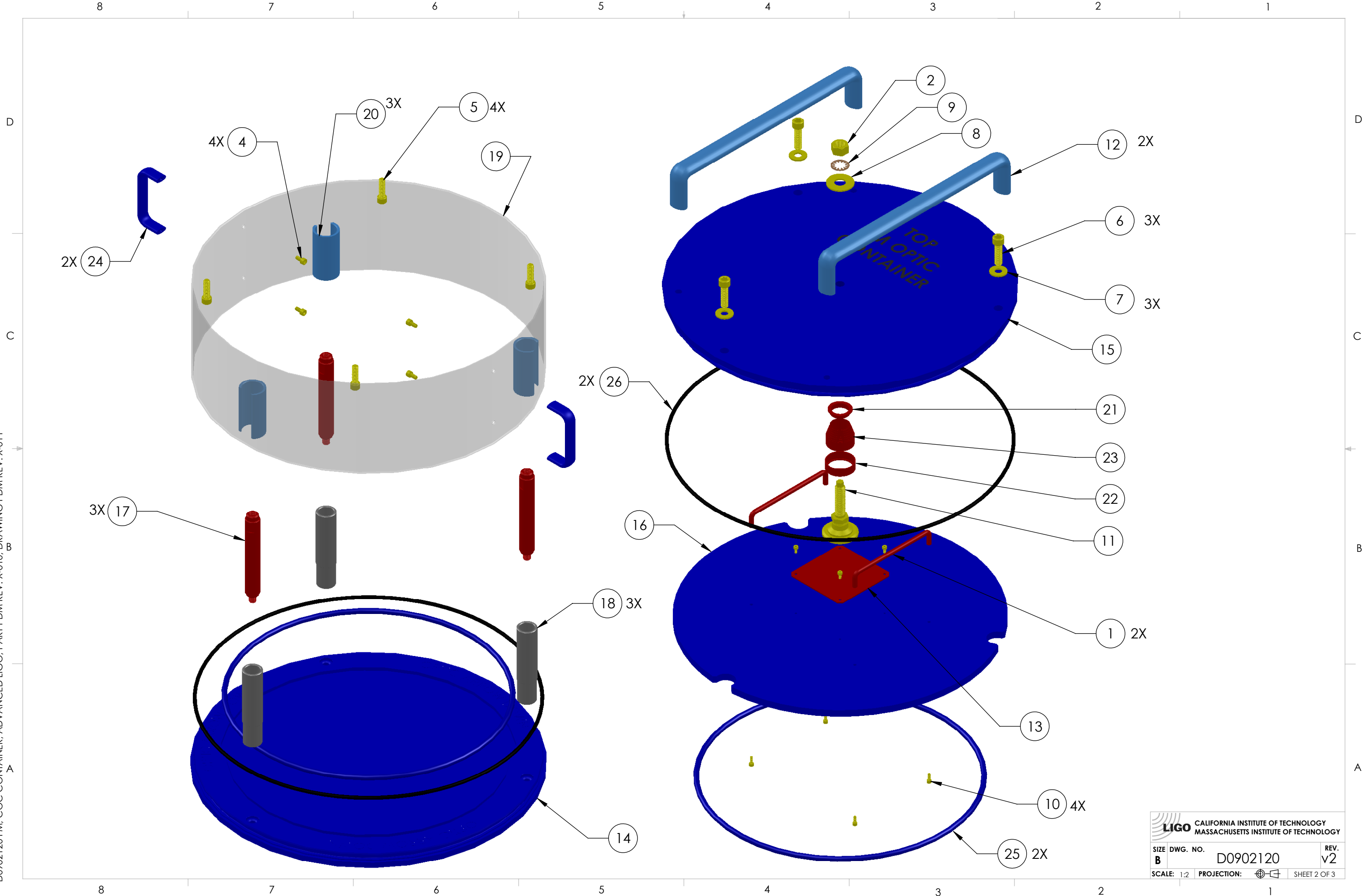
ALT	D0902521-03	OVERSIZE LOCATING SLEEVE, FM, COC CONTAINER	PFA440HP	1	1
ALT	D0902521-02	OVERSIZE LOCATING SLEEVE, FM, COC CONTAINER	PFA440HP	1	1
ALT	D0902521-01	OVERSIZE LOCATING SLEEVE, FM, COC CONTAINER	PFA440HP	1	1
ALT	D0902495	GUIDE, OPTIC, COC CONTAINER	PFA440HP	3	3
26	ROW Inc.	O-Ring, Base FM, .188 Thick X 16.375 ID	PFA Encapsulated Viton	2	2
25	ROW Inc.	O-Ring, Supporting Optic, FM, .275 Thick X 13.475 ID	PFA Encapsulated Viton	2	2
24	D0902536	PULL HANDLE, MODIFIED MC #1897A49	6061-T6 Al	2	2
23	D0902490	COVER, CENTRYCO CC-22-025-0050-013-DAE	301 SSSL	1	1
22	D0902331	RETAINER FOR CENTRYO COVER	304 SSSL	1	1
21	D0902330	PILOT FOR CENTRYO COVER	304 SSSL	1	1
20	D0902128	SHIPPING SLEEVE, FM, COC CONTAINER	6061-T6 Al	3	3
19	D0902126	OUTER SLEEVE, FM, COC CONTAINER	304 SSSL	1	1
18	D0902125	LOCATING SLEEVE, FM, COC CONTAINER	PFA440 HP (PRESHRUNK)	3	3
17	D0902124	LOCATING SHAFT, FM, COC CONTAINER	304 SSSL	3	3
16	D0902123	WEDGE PLATE, FM, COC OPTIC CONTAINER	6061-T6 Al	1	1
15	D0902122	TOP PLATE, FM, COC OPTIC CONTAINER	6061-T6 Al	1	1
14	D0902121	BASE PLATE, FM, COC OPTIC CONTAINER	6061-T6 Al	1	1
13	D0902028	THRUST PAD, WEDGE PLATE CLAMP, COC CONTAINER	17-4 PH SS	1	1
12	D0902027	PULL HANDLE, 337LB LOAD RATED	6061-T6 Al	2	2
11	D0902026	CLAMP, WEDGE PLATE, COC CONTAINER	300 SSSL	1	1
10	C-606-N	SCREW, SHC, 6-32 x 3/8, (UC Comp #C-606-N)	300 SSSL	4	4
9	98449A033	WASHER, LOCK, INT TOOTH 1/2", ASME B18.21.1 MC #98449A033	410 SSSL	1	1
8	98019A510	WASHER, FLAT, 1/2, MS15795-819, MC #98019A510	18-8 SSSL	1	1
7	98019A399	WASHER, FLAT, 3/8, MS15795-814, MC #98019A399	18-8 SSSL	3	3
6	92200A682	SCREW, SHC, 3/8-16 x 1 1/4, MS16995-82, MC #92200A682	18-8 SSSL	3	3
5	92200A630	SCREW, SHC, 5/16-18 x 1, MS16995-66, MC #92200A630	18-8 SSSL	4	4
4	92200A340	SCREW, SHC, 10-32 x 3/8, MS16995-9, MC #92200A340	18-8 SSSL	4	4
3	92200A144	SCREW, SHC, 6-32 x 1/4, MS16995-16, MC#92200A144	300 SSSL	4	4
2	90762A139	1/2 HEX NUT, MS51972-5, MC #90762A139	300 SSSL	1	1
1	1726A7	PULL HANDLE, MC #1726A7	304 SSSL	2	2

ITEM NO.	PART NUMBER	DESCRIPTION	MATERIAL	REQ	SPARE	TOTAL
----------	-------------	-------------	----------	-----	-------	-------

PARTS LIST

<p>NOTES AND TOLERANCES: (UNLESS OTHERWISE SPECIFIED)</p> <p>1. INTERPRET DRAWING PER ASME Y14.5-1994. 2. REMOVE ALL SHARP EDGES, R.02 MIN. 3. DO NOT SCALE FROM DRAWING. 4. ALL MACHINING FLUIDS MUST BE FULLY SYNTHETIC, FULLY WATER SOLUBLE AND FREE OF SULFUR, SILICONE, AND CHLORINE.</p>		<p>DIMENSIONS ARE IN INCHES</p> <p>TOLERANCES: .XX ± .01 .XXX ± .005 ANGULAR ± 0.5°</p>		<p>MATERIAL N/A</p>		<p>FINISH N/A μinch</p>		<p>SCALE: 1:4</p>		<p>PROJECTION: </p>		<p>SHEET 1 OF 3</p>	
<p>California Institute of Technology Massachusetts Institute of Technology</p>				<p>ADVANCED LIGO</p>				<p>CO C</p>					
<p>PART NAME FM, COC CONTAINER ASSEMBLY</p>				<p>DESIGNER: K. BUCKLAND 23 AUG 2009</p>		<p>SIZE: B</p>		<p>DWG. NO. D0902120</p>		<p>REV. v2</p>			
<p>DRAFTER: K. BUCKLAND 23 SEPT 2009</p>				<p>CHECKER: K. MAILAND 21 OCT 2009</p>		<p>APPROVAL: C. TORRIE 21 OCT 2009</p>		<p>SCALE: 1:4</p>		<p>PROJECTION: </p>			

D0902120 FM, COC CONTAINER, ADVANCED LIGO, PART PDM REV: X-010, DRAWING PDM REV: X-011



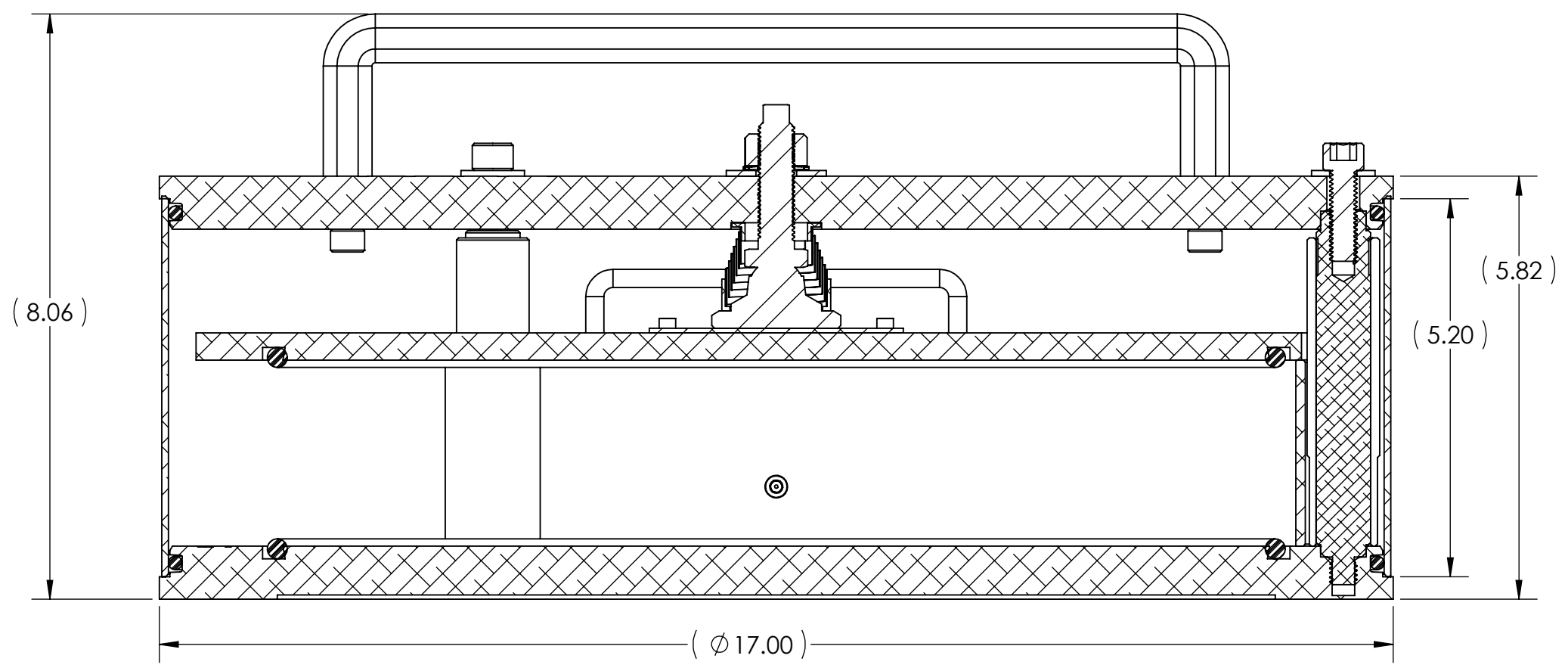
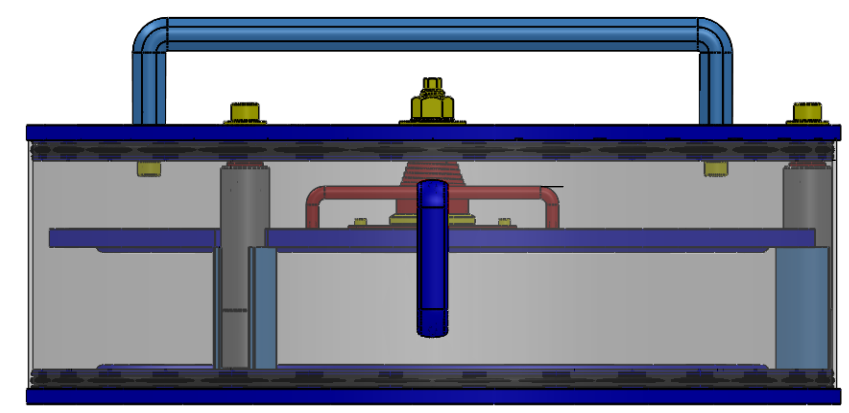
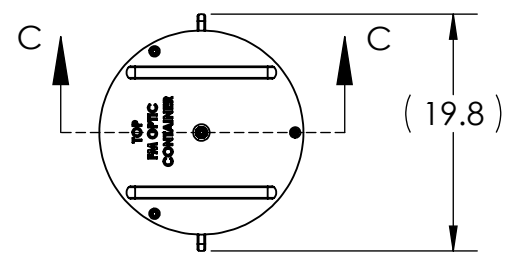
LIGO CALIFORNIA INSTITUTE OF TECHNOLOGY
 MASSACHUSETTS INSTITUTE OF TECHNOLOGY

SIZE	DWG. NO.	REV.
B	D0902120	v2
SCALE: 1:2	PROJECTION:	SHEET 2 OF 3

D0902120 FM, COC CONTAINER, ADVANCED LIGO, PART PDM REV: X-010, DRAWING PDM REV: X-011

8 7 6 5 4 3 2 1

D
C
B
A



SECTION C-C

8 7 6 5 4 3 2 1

LIGO CALIFORNIA INSTITUTE OF TECHNOLOGY
MASSACHUSETTS INSTITUTE OF TECHNOLOGY

SIZE	DWG. NO.	REV.
B	D0902120	v2
SCALE: 1:2	PROJECTION:	SHEET 3 OF 3