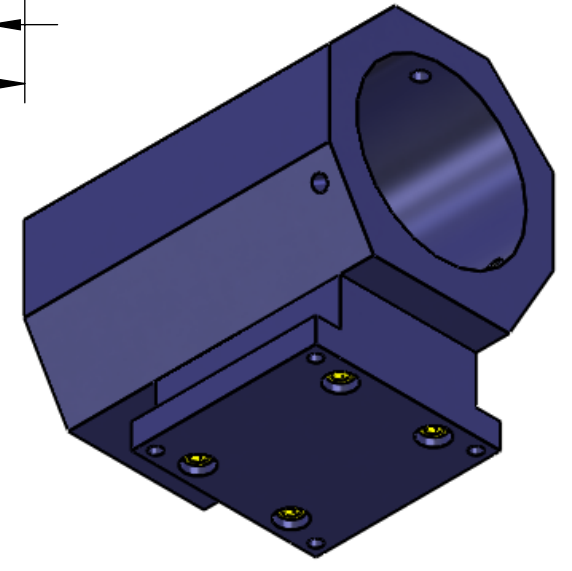
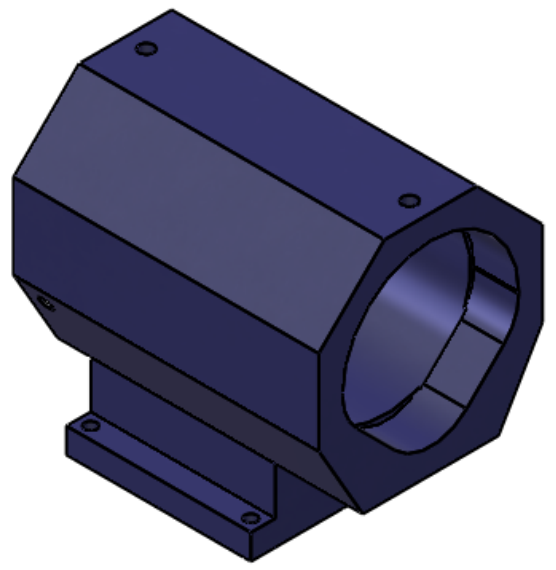
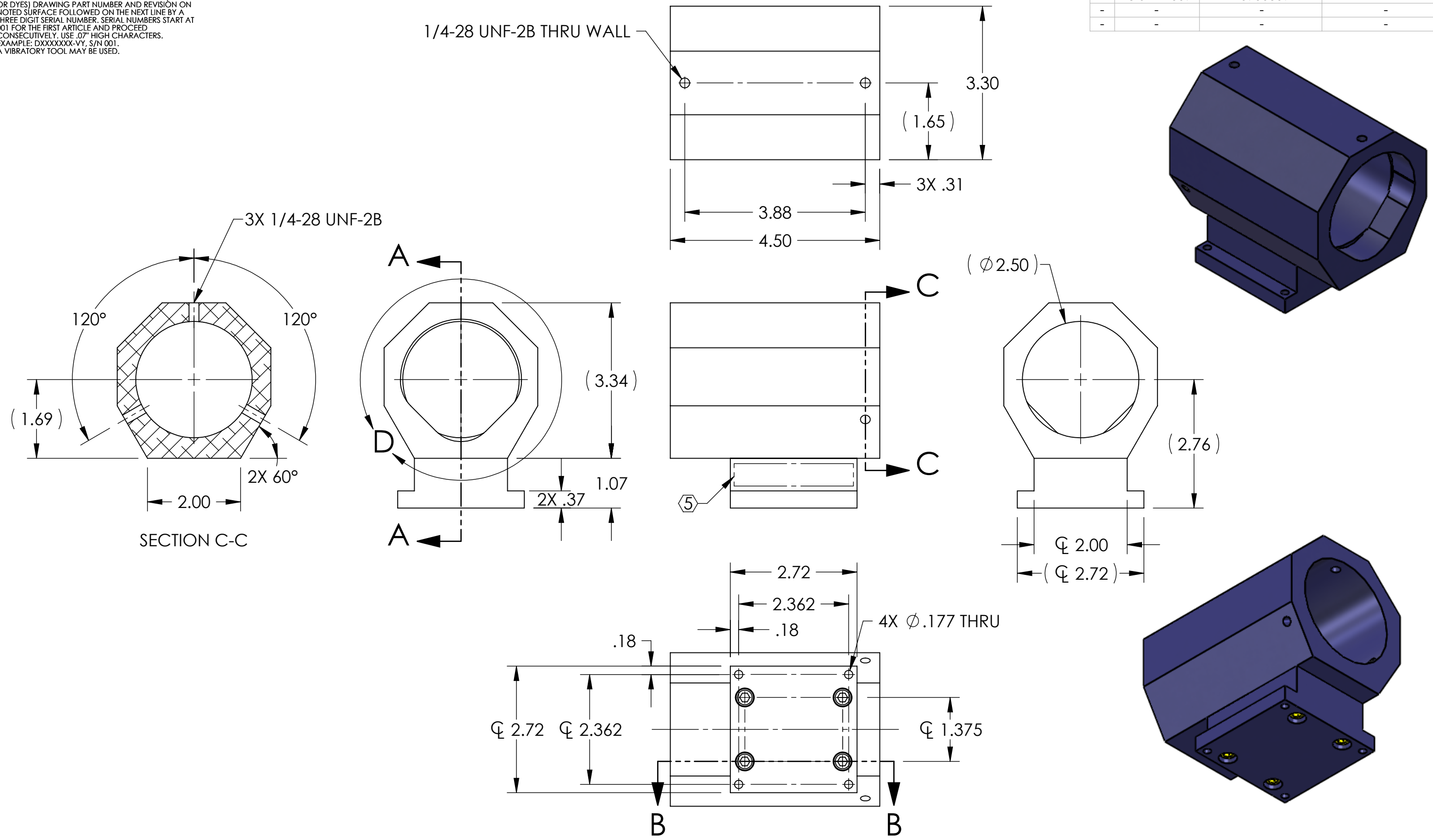


NOTES CONTINUED:
 5 SCRIBE, ENGRAVE, OR MECHANICALLY STAMP (NO INKS OR DYES) DRAWING PART NUMBER AND REVISION ON NOTED SURFACE FOLLOWED ON THE NEXT LINE BY A THREE DIGIT SERIAL NUMBER. SERIAL NUMBERS START AT 001 FOR THE FIRST ARTICLE AND PROCEED CONSECUTIVELY. USE .07" HIGH CHARACTERS. EXAMPLE: DXXXXXX-VY, S/N 001. A VIBRATORY TOOL MAY BE USED.

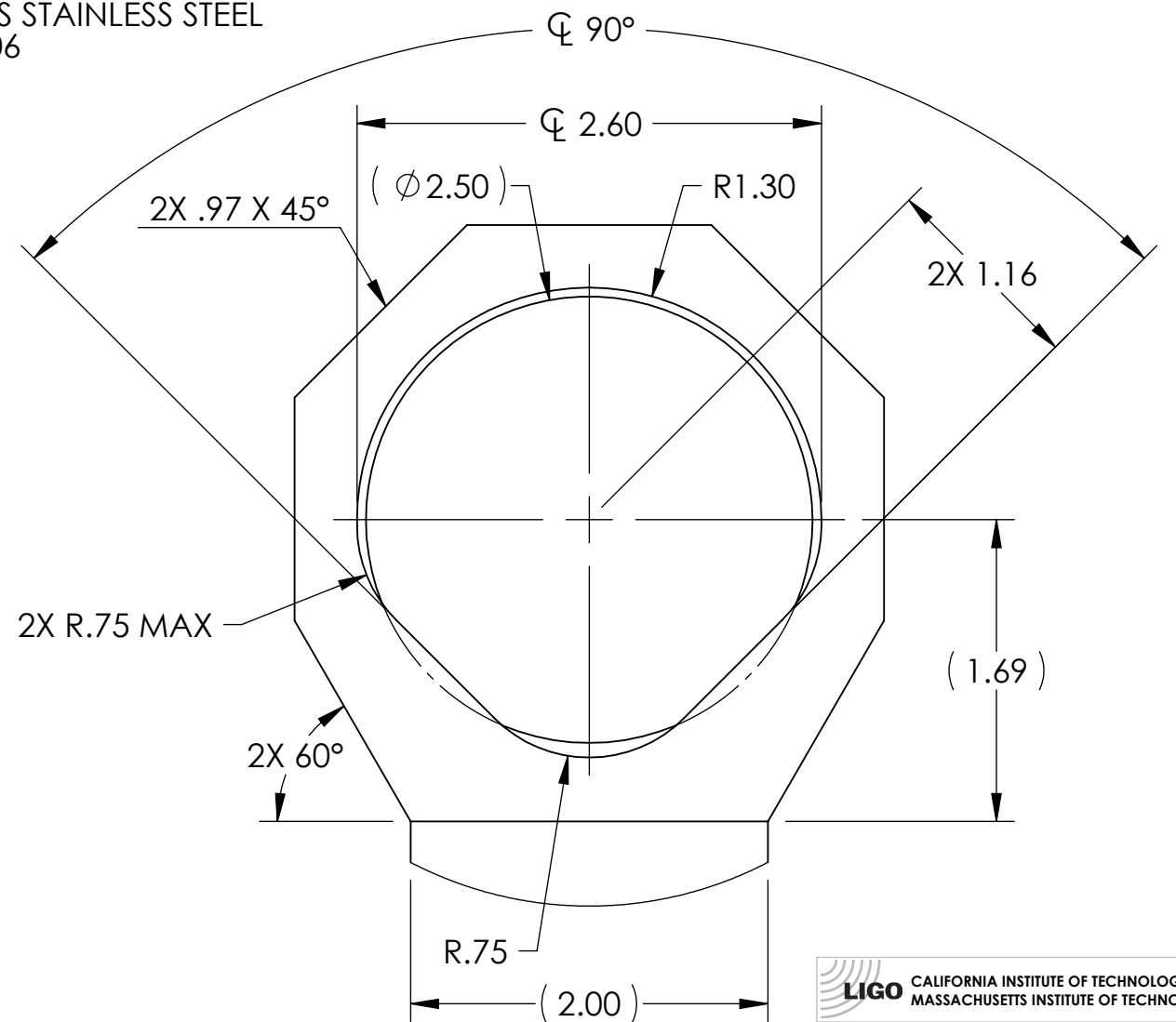
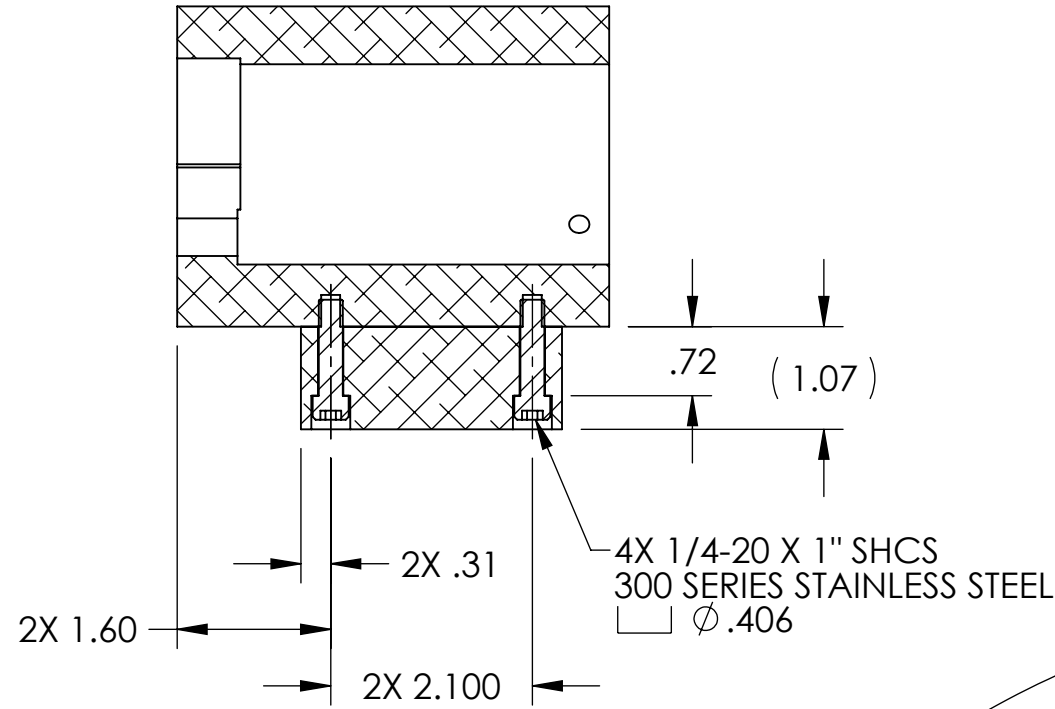
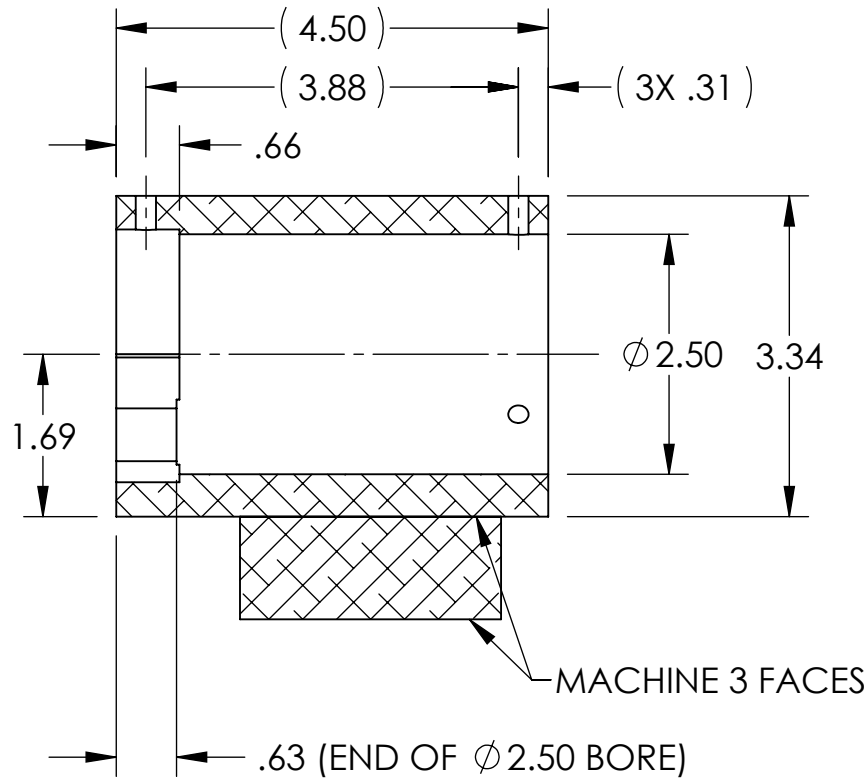
REV.	DATE	DCN #	DRAWING TREE #
v1	25 SEP 2009	E0900309	-
-	-	-	-
-	-	-	-



D0902113 AdLIGO AOS Oplev Large Telescope Mount, PART PDM REV: X-013, DRAWING PDM REV: X-017

NOTES AND TOLERANCES: (UNLESS OTHERWISE SPECIFIED)				PART NAME	
DIMENSIONS ARE IN INCHES TOLERANCES: .XX ± .01 .XXX ± .005 ANGULAR ± 1.0°				ADLIGO AOS OPLEV LARGE TELESCOPE MOUNT	
1. INTERPRET DRAWING PER ASME Y14.5-1994. 2. REMOVE ALL SHARP EDGES, R.02 MIN. 3. DO NOT SCALE FROM DRAWING. 4. ALL MACHINING FLUIDS SHALL BE WATER SOLUBLE AND FREE OF SULFUR, CHLORINE AND SILICONE, SUCH AS CINCINNATI MILACRON'S CIMTECH 410.				CALIFORNIA INSTITUTE OF TECHNOLOGY MASSACHUSETTS INSTITUTE OF TECHNOLOGY	
MATERIAL 6061-T6 ALUMINUM		FINISH N/A μinch		SYSTEM ADVANCED LIGO	
		SUB-SYSTEM AOS		DESIGNER C. CONLEY	
		NEXT ASSY		DRAFTER C. CONLEY	
				CHECKER R. DE SALVO	
				APPROVAL	
				SIZE DWG. NO. B D0902113	
				REV. v1	
				SCALE: NONE PROJECTION:	
				SHEET 1 OF 2	

D0902113 AdLIGO AOS Oplev Large Telescope Mount, PART PDM REV: X-013, DRAWING PDM REV: X-017



LIGO CALIFORNIA INSTITUTE OF TECHNOLOGY
 MASSACHUSETTS INSTITUTE OF TECHNOLOGY

SIZE	DWG. NO.	REV.
B	D0902113	v1
SCALE: NONE	PROJECTION:	SHEET 2 OF 2