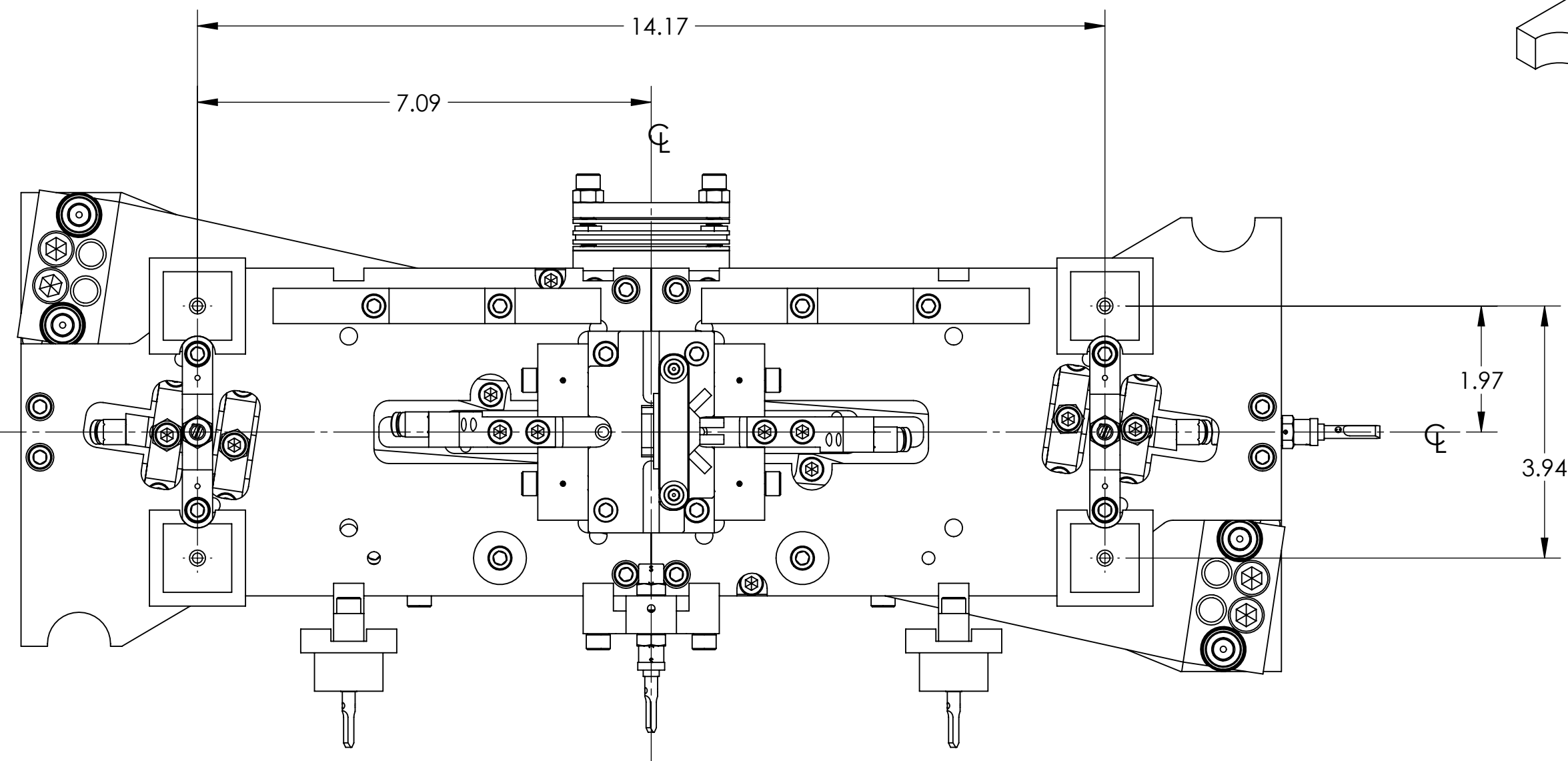


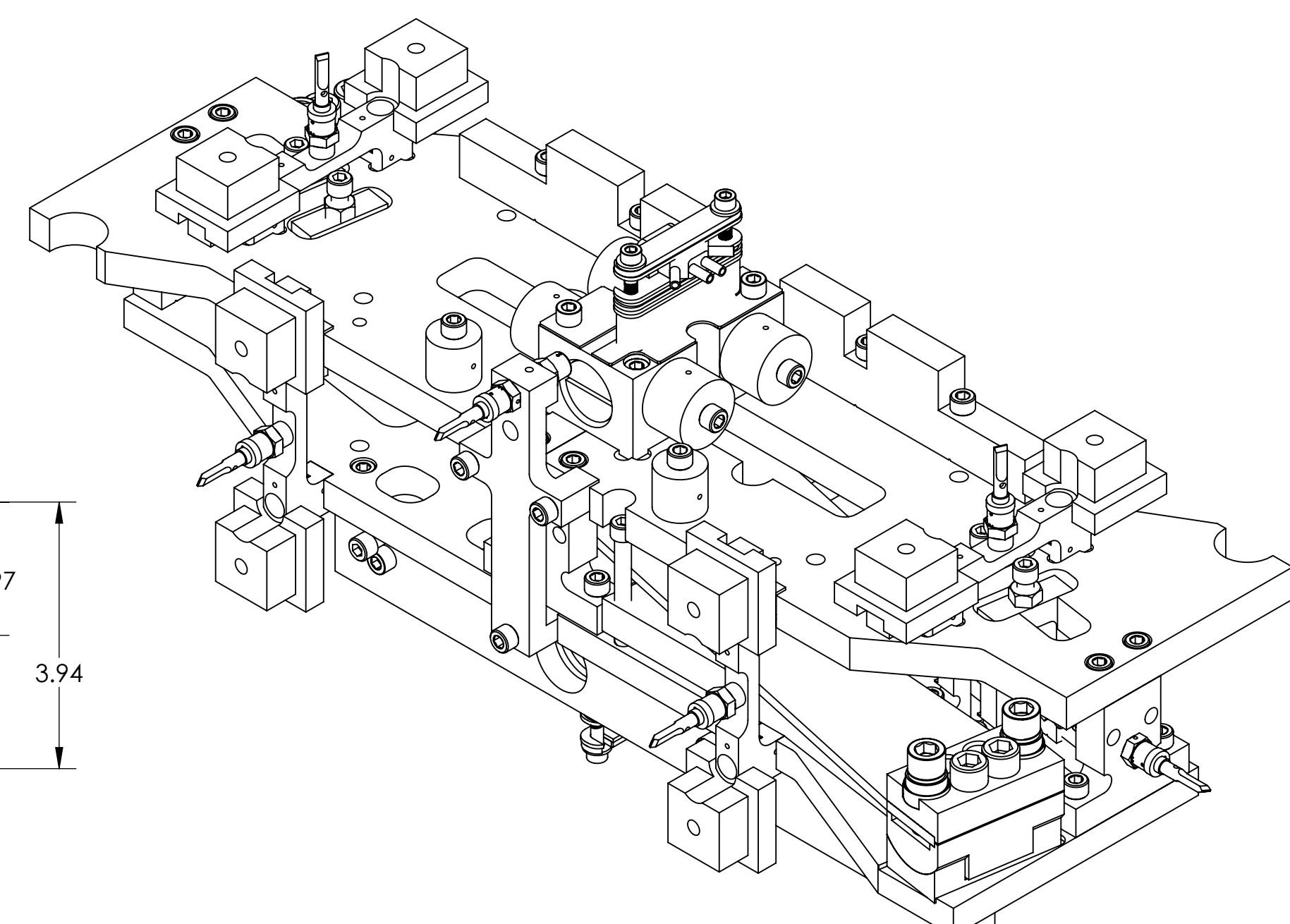
# TOP MASS - REACTION CHAIN

(SEE D060403 FOR ASSEMBLY PROCESS)

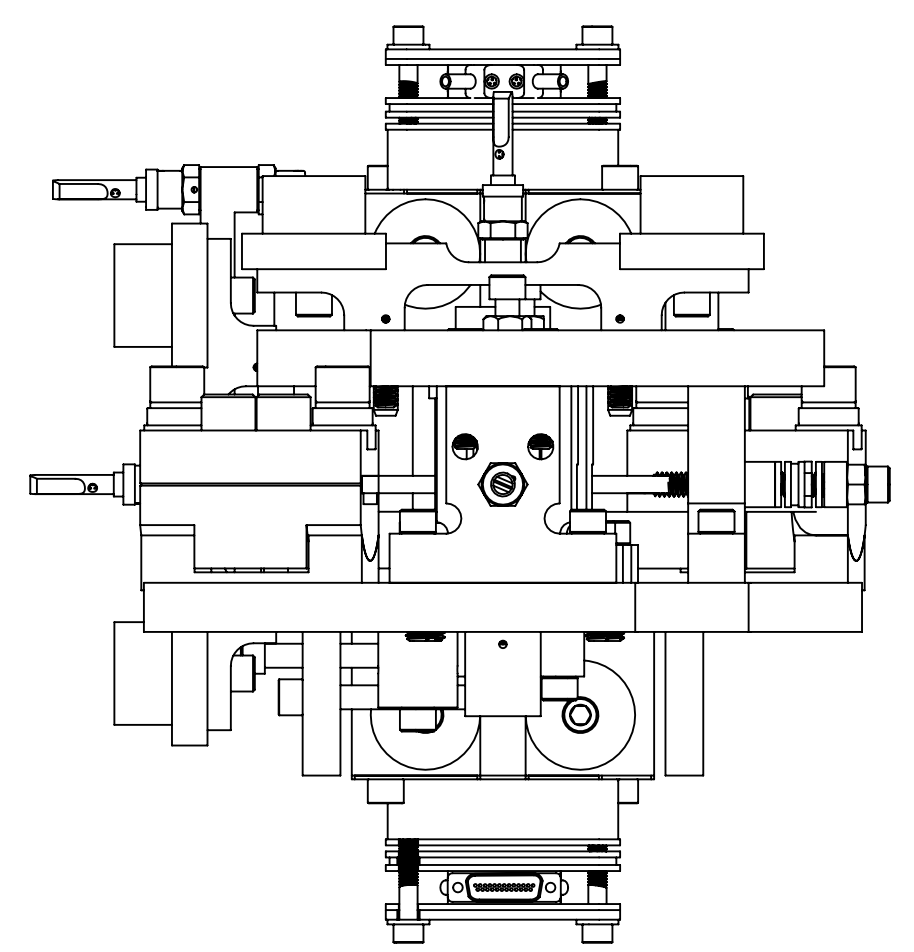
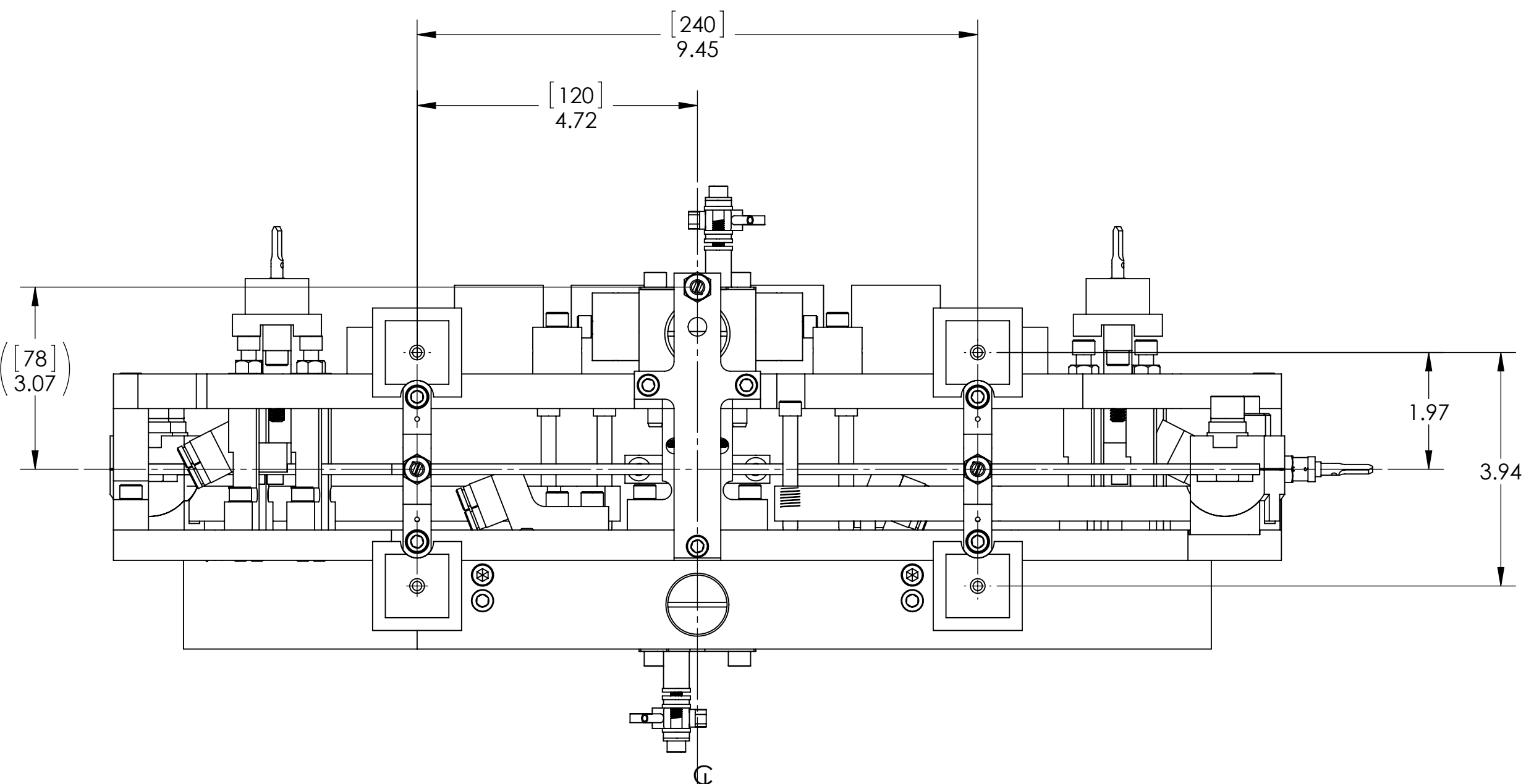
REV.	DATE	DCN #	DRAWING TREE #
v6	28 APR 2014	E1300970-x0	-
-	-	-	-
-	-	-	-



TOP MASS - REACTION CHAIN WITH REF. DIMS



ISO VIEW



ITEM NO.	PART NUMBER	DESCRIPTION	MATERIAL	QTY.
40	MS16995-86 OR EQ.	SCREW, SHC, 3/8-16 X 2.25 LG.	300 SSTL	4
39	94355A533 McMASTER-CARR OR EQ.	SET SCREW, 1/4-20 X .25 LG.	18-8 SSTL	2
38	91944A030 McMASTER-CARR OR EQ.	LEVELING WASHER, 3/8" SCREW SIZE	18-8 SSTL	4
37	1185-6EN562 EMHART OR EQ.	HELICOIL, 3/8-16 X .562 LG.	NITRONIC 60	4
36	1185-6EN375 EMHART OR EQ.	HELICOIL, 3/8-16X .375 LG.	NITRONIC 60	4
35	1185-4EN375 EMHART OR EQ.	HELICOIL, 1/4-20 X .375 LG.	NITRONIC 60	12
34	1185-4EN250 EMHART OR EQ.	HELICOIL, 1/4-20 X .25 LG.	NITRONIC 60	12
33	N-2520-A UC COMPONENTS OR EQ.	HEX NUT 1/4-20, Ag PLATED	Ag-PLATED 300 SSTL	4
32	C-2032-NA UC COMPONENTS OR EQ.	SHCS, 1/4-20 x 2" LG., Ag PLATED	Ag-PLATED 300 SSTL	8
31	C-2032-N UC COMPONENTS OR EQ.	SHCS, 1/4-20 x 2" L., 18-8 SSTL	18-8 SSTL	2
30	C-2016-NA UC COMPONENTS OR EQ.	SCREW, SHC, 1/4-20 x 1.0 LG, Ag PLATED	Ag-PLATED 300 SSTL	48
29	C-2016-N UC COMPONENTS OR EQ.	SCREW, SHC, 1/4-20 x 1" LG.	18-8 SSTL	15
28	C-1620-NA UC COMPONENTS OR EQ.	SCREW, SHC, 3/8-16 X 1.25 LG. (Ag PLATED)	Ag-PLATED 300 SSTL	4
27	C-808-NA UC COMPONENTS OR EQ.	SCREW, SHC, 8-32 X .50 LG., Ag PLATED	Ag-PLATED 300 SSTL	4
26	TD-1084-727	DOWEL PIN, 5mm DIA. X 13mm Lg.	-	4
25		SCREW, SHC, 1/4-20 X 2.00 , ROUNDED END	300 SSTL	10
24	D1100785-562	WASHER, FLAT, .38 X .562 O.D.	NITRONIC 60	4
23	D070225	ALIGO, SUS, QUAD WIRING HARNESS, WIRE CLAMP	N/A	1
22	D070218	ALIGO, SUS, QUAD, WIRING HARNESS, MASS WIRE CLAMP	N/A	2
21	D060359-050	ALIGO, SUS, QUAD N-PTYPE, ADDITIONAL MASS, 50 G	304 SSTL	4
20	D060399	ALIGO, SUS, QUAD TOP MASS N-PTYPE, STOP BRIDGE	6061-T6 Al	4
19	D060398	ALIGO, SUS, TOP MASS QUAD N-PTYPE, PITCH ADJUSTER & MASS ADJUSTER TURRET	6061-T6 Al	2
18	D060397	ALIGO, SUS, TOP MASS QUAD N-PTYPE, TOP MASS SPACER	304 SSTL	4
17	D060391	Advanced LIGO, SUS, Quad N-Ptype Top Mass, TOP WIRE CLAMP (Top Mass)	N/A	2
16	D060359-100	MASS, ALIGO SUS, 100g	316 SSTL	8
15	D060236	ADV LIGO, SUS, QUAD N-PTYPE TOP MASS, MIDDLE BLADE SPRING	MARAGING STEEL C250	2
14	D060430	ALIGO, SUS, QUAD N-PTYPE TOP MASS, BASE PLATE	316 SSTL	1
13	D060421	ADVANCED LIGO, SUS, TOP MASS QUAD N-PTYPE, MASS AND SUPPORT MEMBER	304 SSTL	2
12	D060420	ALIGO, SUS, TOP MASS QUAD N-PTYPE, WIRE CLAMP ADJUSTMENT BLOCK	6061-T6 Al	2
11	D060419	ADVANCED LIGO, SUS, TOP MASS QUAD N-PTYPE, TOP MASS WIRE CLAMP	N/A	2
10	D060417	ALIGO, SUS, TOP MASS QUAD N-PTYPE, OSEM MAGNET AND FLAG CONCEPT PART BUILT	N/A	2
9	D060416	Magnet and Flag Assembly	N/A	2
8	D060415	Advanced LIGO, SUS, Quad N-Ptype Top Mass, BLADE TIP Z POSITION ADJ (BTM HALF)	304 SSTL	2
7	D060414	Advanced LIGO, SUS, Quad N-Ptype Top Mass, BLADE TIP Z POSITION ADJ (BTM HALF PART 2)	6061-T6 Al	2
6	D060412	Advanced LIGO, SUS, Quad N-Ptype Top Mass, OSEM BRACKET (TOP OSEM)	6061-T6 Al	1
5	D060411	Advanced LIGO, SUS, Quad N-Ptype Top Mass, TOP PLATE	304 SSTL	2
4	D060409	Advanced LIGO, SUS, Quad N-Ptype Top Mass, OSEM ECD UNIT	N/A	4
3	D060406	Advanced LIGO, SUS, Quad N-Ptype Top Mass, BASE PLATE STIFFENER	6061-T6 Al	2
2	D060405	ALIGO, SUS, QUAD N-PTYPE TOP MASS, PITCH ADJUSTER	304 SSTL	2
1	D060404	Advanced LIGO, SUS, Quad N-Ptype Top Mass, BLADE CLAMP (TOP Half)	304, 316 OR 302 SSTL	2

PARTS LIST

NOTES AND TOLERANCES: (UNLESS OTHERWISE SPECIFIED)

DIMENSIONS ARE IN INCHES [MM]

**LIGO** CALIFORNIA INSTITUTE OF TECHNOLOGY  
MASSACHUSETTS INSTITUTE OF TECHNOLOGY

PART NAME  
**ALIGO, SUS, QUAD N-PTYPE TOP MASS-REACTION CHAIN**

SYSTEM  
**ADVANCED LIGO**

DESIGNER  
**DRAFTER** E.SANCHEZ 28 APR 2014  
**CHECKER** SEE DCC SEE DCC  
**APPROVAL** SEE DCC SEE DCC

FINISH  
**N/A**  $\mu$ inch

SIZE DWG. NO.  
**D** **D0902031**

SCALE: 1:2

PROJECTION: SHEET 1 OF 1