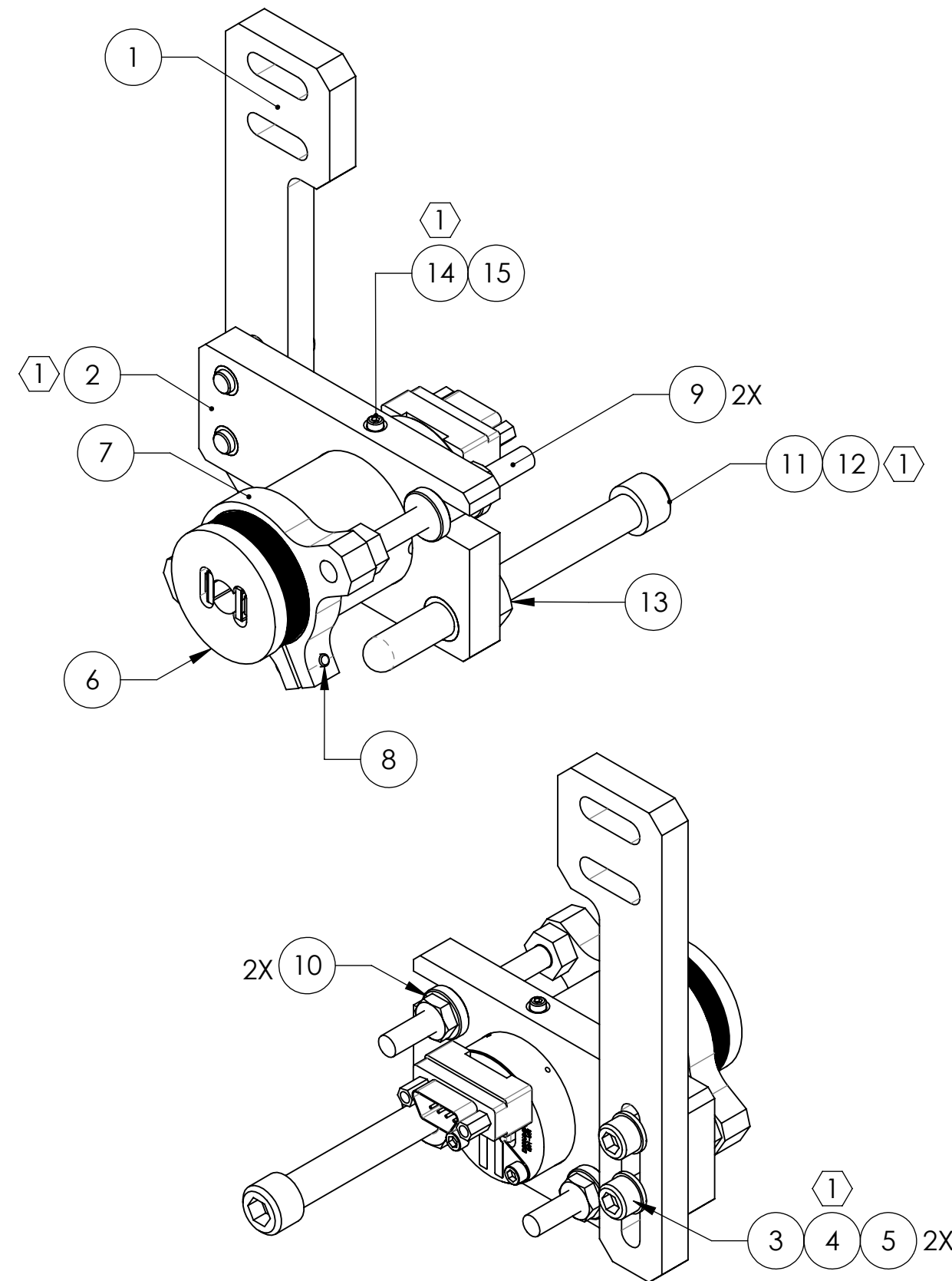


D0902024\_Advanced\_LIGO\_SUS\_HLTS\_Upper\_AOSEM\_Alignment\_Assembly\_Intermediate\_Mass\_PART PDM REV: V3-001, DRAWING PDM REV: V3

REV.	DATE	DCN #	DRAWING TREE #
v1	17 AUG 2009	E0900243	E080191
v2	02 DEC 2009	E0900446	E080191
v3	10 AUG 2010	E1000301	E080191
v4	05 MAR 2011	E1100228	E080191



ITEM NO.	PART NUMBER	DESCRIPTION	MATERIAL	REQ	SPARE	TOTAL
15	-	SCREW, SOCKET SET, #4-40 UNC-2A X 0.25 LONG, OVAL POINT	300 SSSL	1	1	2
14	1185-04EN168	HELICOIL, #4-40 X 0.168 LONG (1)	NITRONIC 60	1	1	2
13	-	JAM NUT, 1/4-20	300 SSSL	1	1	2
12	1185-4EN250	HELICOIL, 1/4-20 X 0.25 LONG (1)	NITRONIC 60	1	1	2
11	D030021	SCREW, SOCKET HEAD CAP, 1/4-20 UNC-3A X 2.5 LONG, FULLY THREADED, ROUNDED END	300 SSSL	1	1	2
10	D1002865	ADJUSTMENT NUT, THICK	PEEK	2	0	2
9	D1000659	ADJUSTER SHAFT	304, 316 OR 302 SSSL	2	0	2
8	-	SCREW, SOCKET HEAD CAP, #2-56 UNC-2A X 0.375 LONG	300 SSSL	1	1	2
7	D1002858	AOSEM ADJUSTMENT COLLAR (REVERSE SIDE)	6061-T6 Al	1	0	1
6	D0901065	AOSEM ASSEMBLY	N/A	1	0	1
5	-	WASHER, FLAT, VENTED, #8 (U-C COMPONENTS P/N WFV-08 OR EQUIVALENT)	300 SSSL	2	1	3
4	1185-2EN246	HELICOIL, #8-32 X 0.246 LONG (1)	NITRONIC 60	2	1	3
3	-	SCREW, SOCKET HEAD CAP, #8-32 UNC-2A X 0.625 LONG	300 SSSL	2	1	3
2	D0901492	AOSEM ALIGNMENT BRACKET, INT. MASS (1)	6061-T6 Al	1	0	1
1	D0902025	UPPER AOSEM MOUNTING BRACKET, INT. MASS	6061-T6 Al	1	0	1
ITEM NO.	PART NUMBER	DESCRIPTION	MATERIAL	REQ	SPARE	TOTAL

PARTS LIST

NOTES AND TOLERANCES: (UNLESS OTHERWISE SPECIFIED)

(1) HELICOILS TO BE INSTALLED INTO ITEM NO. 2 BY LIGO AFTER ALL PARTS ARE CLEANED AND BAKED.  
 2. RIGHT SIDE CONFIGURATION IS SHOWN IN THIS DRAWING. LEFT SIDE CONFIGURATION IS A MIRROR IMAGE OF RIGHT SIDE CONFIGURATION.

MATERIAL	N/A	FINISH	N/A μinch
----------	-----	--------	-----------

CALIFORNIA INSTITUTE OF TECHNOLOGY MASSACHUSETTS INSTITUTE OF TECHNOLOGY		<b>PART NAME</b> UPPER AOSEM ALIGNMENT ASSY, INT. MASS	
<b>SYSTEM</b> ADVANCED LIGO	<b>SUB-SYSTEM</b> SUS	<b>DESIGNER</b> D. BRIDGES 13 JUN 2011	<b>SIZE DWG. NO.</b> B D0902024
<b>DRAFTER</b> D. BRIDGES 14 JUN 2011	<b>CHECKER</b> B. MOORE 15 JUN 2011	<b>APPROVAL</b>	<b>REV.</b> v4
<b>NEXT ASSY</b> HLTS OVERALL ASSY		SCALE: 1:1	PROJECTION:  SHEET 1 OF 1