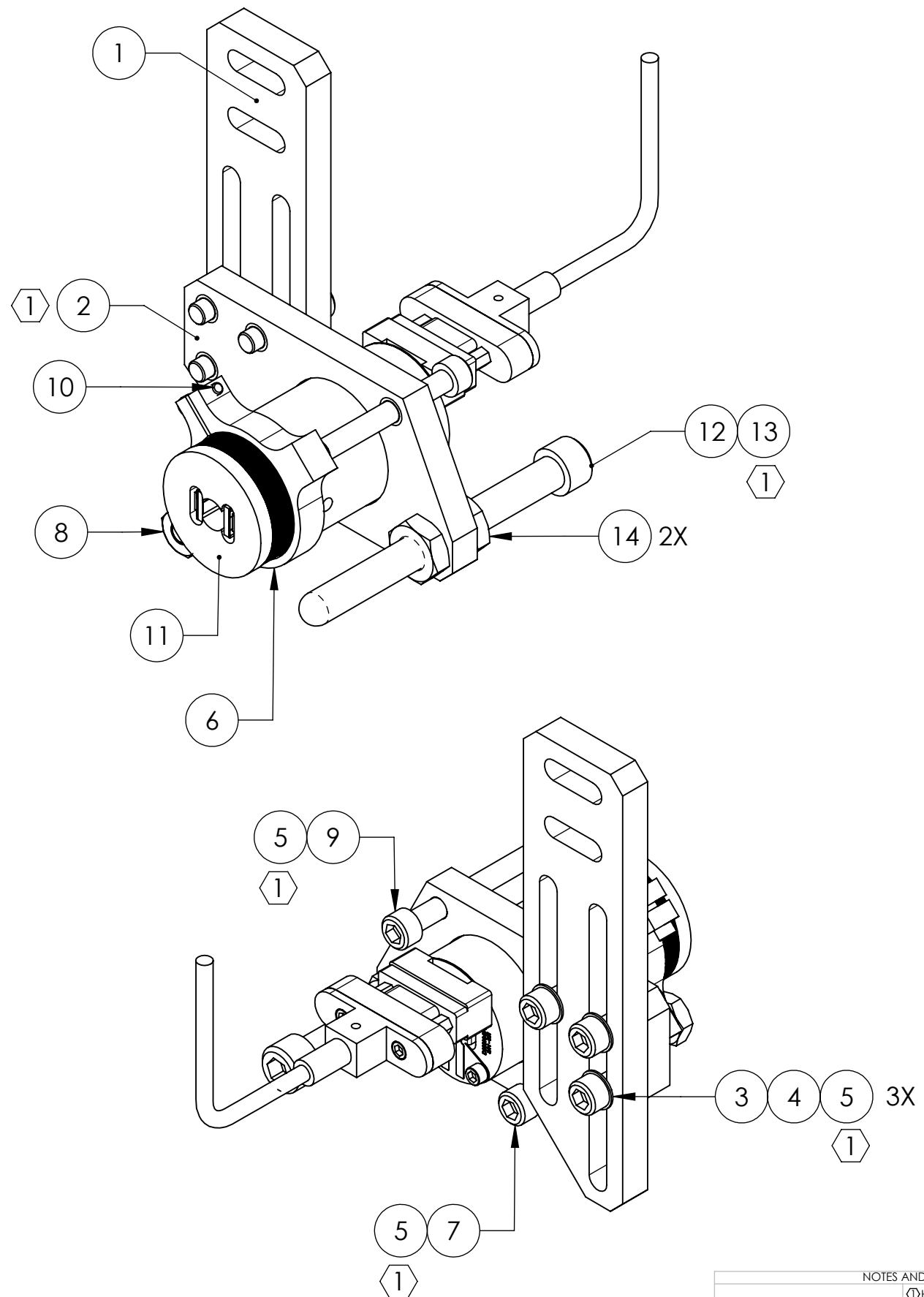


D0902024_Advanced_LIGO_SUS_HLTS_Upper_AOSEM_Alignment_Assembly_Intermediate_Mass_PART PDM REV: X-004, DRAWING PDM REV: X-000

REV.	DATE	DCN #	DRAWING TREE #
v1	17 AUG 2009	E0900243	E080191
-	-	-	-
-	-	-	-



14	-	JAM NUT, 1/4-20	300 SSSL	2	1	3
13	1185-4EN250	HELICOIL, 1/4-20 X 0.25 LONG (1)	NITRONIC 60	1	1	2
12	D030021	SCREW, SOCKET HEAD CAP, 1/4-20 UNC-2A X 2.5 LONG, FULLY THREADED, ROUNDED END	Ag-PLATED 300 SSSL	1	1	2
11	D0901065	AOSEM ASSEMBLY	N/A	1	0	1
10	-	SCREW, SOCKET HEAD CAP, #2-56 UNC-2A X 0.375 LONG	300 SSSL	1	1	2
9	-	SCREW, SOCKET HEAD CAP, #8-32 UNC-2A X 1.25 LONG	300 SSSL	1	1	2
8	-	LOCKNUT, #8-32	300 SSSL	1	1	2
7	-	SCREW, SOCKET HEAD CAP, #8-32 UNC-2A X 1.5 LONG	300 SSSL	1	1	2
6	D0901548	AOSEM ADJUSTMENT COLLAR	6061-T6 Al	1	0	1
5	1185-2EN246	HELICOIL, #8-32 X 0.246 LONG (1)	NITRONIC 60	5	3	8
4	-	SCREW, SOCKET HEAD CAP, #8-32 UNC-2A X 0.625 LONG	300 SSSL	3	1	4
3	-	WASHER, FLAT, #8 (NAS 620-C8L OR EQUIVALENT)	300 SSSL	3	1	4
2	D0901492	AOSEM ALIGNMENT BRACKET, INT. MASS (1)	6061-T6 Al	1	0	1
1	D0902025	UPPER AOSEM MOUNTING BRACKET, INT. MASS	6061-T6 Al	1	0	1
ITEM NO.	PART NUMBER	DESCRIPTION	MATERIAL	REQ	SPARE	TOTAL

PARTS LIST

NOTES AND TOLERANCES: (UNLESS OTHERWISE SPECIFIED)

(1) HELICOILS TO BE INSTALLED INTO ITEM NO. 2 BY LIGO AFTER ALL PARTS ARE CLEANED AND BAKED.

CALIFORNIA INSTITUTE OF TECHNOLOGY MASSACHUSETTS INSTITUTE OF TECHNOLOGY		PART NAME UPPER AOSEM ALIGNMENT ASSY, INT. MASS	
SYSTEM ADVANCED LIGO	SUB-SYSTEM SUS	DESIGNER D. BRIDGES	DATE 10 SEP 2009
DRAFTER D. BRIDGES	DATE 10 SEP 2009	SIZE B	DWG. NO. D0902024
CHECKER M. MEYER	DATE 11 SEP 2009	REV. v1	SCALE: 1:1 PROJECTION:
MATERIAL N/A		FINISH N/A μinch	NEXT ASSY HLTS OVERALL ASSY