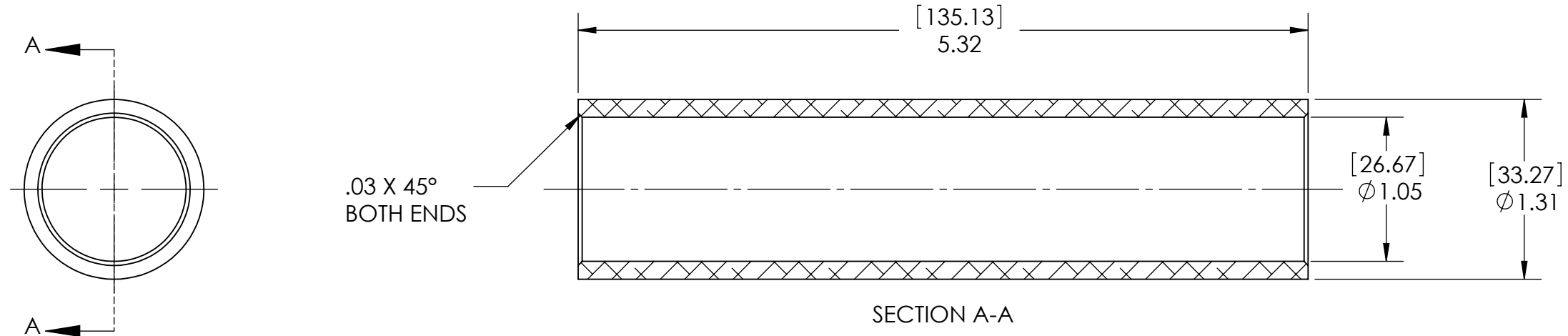


D0902016 SHIPPING SLEEVE, CP, COC CONTAINER, ADVANCED LIGO, PART PDM REV: X-001, DRAWING PDM REV: X-001

8 7 6 5 4 3 2 1

NOTES CONTINUED:  
⑤ BAG ALL ITEMS AND MARK OR TAG EACH BAG WITH DRAWING NUMBER, REVISION, AND QUANTITY. EXAMPLE: DXXXXXX-VY, QTY: TBD  
⑥ CAN BE MADE FROM MCMASTER #4481T113 TUBING

REV.	DATE	DCN #	DRAWING TREE #
v1	16 SEPT 2009	E0900306	



NOTES AND TOLERANCES: (UNLESS OTHERWISE SPECIFIED)	
DIMENSIONS ARE IN INCHES [MM]	
TOLERANCES: .XX ± .01 .XXX ± .005 ANGULAR ± 0.5°	
1. INTERPRET DRAWING PER ASME Y14.5-1994. 2. REMOVE ALL SHARP EDGES, R.02 MIN. 3. DO NOT SCALE FROM DRAWING. 4. ALL MACHINING FLUIDS MUST BE FULLY SYNTHETIC, FULLY WATER SOLUBLE AND FREE OF SULFUR, SILICONE, AND CHLORINE.	
MATERIAL	6061-T6 Al
FINISH	63 µinch

	CALIFORNIA INSTITUTE OF TECHNOLOGY MASSACHUSETTS INSTITUTE OF TECHNOLOGY	
	SYSTEM	SUB-SYSTEM
	ADVANCED LIGO	COC
	NEXT ASSY	D0902001

PART NAME				SHIPPING SLEEVE, CP, COC CONTAINER			
DESIGNER	K. BUCKLAND	10 SEPT 2009	SIZE	DWG. NO.		REV.	
DRAFTER	K. BUCKLAND	10 SEPT 2009	B	D0902016		v1	
CHECKER	K. MAILAND	16 SEPT 2009	SCALE	1:1		PROJECTION:	
APPROVAL	C. TORRIE	16 SEPT 2009			SHEET 1 OF 1		

8 7 6 5 4 3 2 1