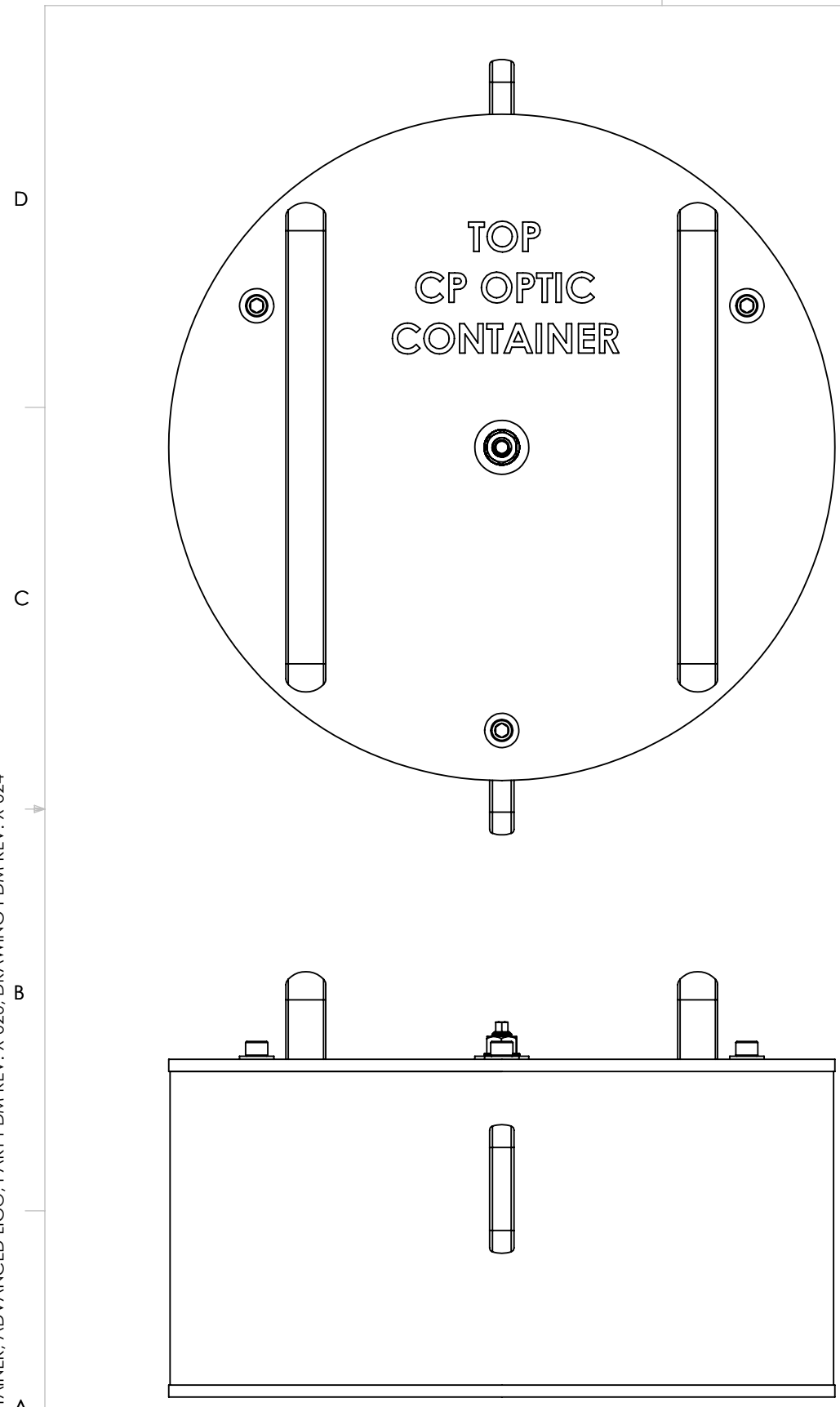


D0902001 CP, COC CONTAINER, ADVANCED LIGO, PART PDM REV: X-020, DRAWING PDM REV: X-024

REV.	DATE	DCN #	DRAWING TREE #
v3	30 SEPT 2009	E0900322	
v4	23 OCT 2009	E0900380	
v5	12 NOV 2009	E0900383	
v6	30 OCT 2009	E0900412	



ALT	ROW, Inc	O-Ring, Supporting Optic, SR, .275 Thick x 9.000 ID	PFA Encapsulated Viton	1	1
ALT	D0902520-3	OVERSIZE LOCATING SLEEVE, CP, COC CONTAINER	PFA440 HP	1	1
ALT	D0902520-2	OVERSIZE LOCATING SLEEVE, CP, COC CONTAINER	PFA440 HP	1	1
ALT	D0902520-1	OVERSIZE LOCATING SLEEVE, CP, COC CONTAINER	PFA440 HP	1	1
ALT	D0902495	GUIDE, OPTIC, COC CONTAINER	PFA440 HP	3	3
27	ROW Inc.	O-Ring, Base FM, .188 Thick X 16.375 ID	PFA Encapsulated Viton	2	2
26	ROW Inc.	O-Ring, Supporting Optic, ETM, .275 Thick X 12.500 ID	PFA Encapsulated Viton	1	1
25	ROW Inc.	O-Ring, Supporting Optic, SR, .275 Thick X 9.500 ID	PFA Encapsulated Viton	1	1
24	D0902536	PULL HANDLE, MODIFIED MC #1897A49	6061-T6 Al	2	2
23	D0902490	COVER, CENTRYCO CC-22-025-0050-013-DAE	301 SSSL	1	1
22	D0902331	RETAINER FOR CENTRYO COVER	304 SSSL	1	1
21	D0902330	PILOT FOR CENTRYO COVER	304 SSSL	1	1
20	D0902028	THRUST PAD, WEDGE PLATE CLAMP, COC CONTAINER	17-4 PH SS	1	1
19	D0902027	PULL HANDLE, 337LB LOAD RATED	6061-T6 Al	2	2
18	D0902026	CLAMP, WEDGE PLATE, COC CONTAINER	300 SSSL	1	1
17	D0902016	SHIPPING SLEEVE, CP, COC CONTAINER	6061-T6 Al	3	3
16	D0901890	OUTER SLEEVE, CP, COC CONTAINER	304 SSSL	1	1
15	D0901889	LOCATING SLEEVE, CP, COC CONTAINER	PFA440 HP	3	3
14	D0901887	LOCATING SHAFT, CP, COC CONTAINER	304 SSSL	3	3
13	D0901885	WEDGE PLATE, CP, COC OPTIC CONTAINER	6061-T6 Al	1	1
12	D0901884	TOP PLATE, CP, COC OPTIC CONTAINER	6061-T6 Al	1	1
11	D0901883	BASE PLATE, CP, COC OPTIC CONTAINER	6061-T6 Al	1	1
10	C-606-N	SCREW, SHC, 6-32 x 3/8, (UC Comp #C-606-N)	300 SSSL	4	4
9	98449A033	WASHER, LOCK, INT TOOTH 1/2", ASME B18.21.1 MC #98449A033	410 SSSL	1	1
8	98019A510	WASHER, FLAT, 1/2, MS15795-819, MC #98019A510	18-8 SSSL	1	1
7	98019A399	WASHER, FLAT, 3/8, MS15795-814, MC #98019A399	18-8 SSSL	3	3
6	92200A682	SCREW, SHC, 3/8-16 x 1 1/4, MS16995-82, MC #92200A682	18-8 SSSL	3	3
5	92200A630	SCREW, SHC, 5/16-18 x 1, MS16995-66, MC #92200A630	18-8 SSSL	4	4
4	92200A340	SCREW, SHC, 10-32 x 3/8, MS16995-9, MC #92200A340	18-8 SSSL	4	4
3	92200A144	SCREW, SHC, 6-32 x 1/4, MS16995-16, MC#92200A144	300 SSSL	4	4
2	90762A139	1/2 HEX NUT, MS51972-5, MC #90762A139	300 SSSL	1	1
1	1726A7	PULL HANDLE, MC #1726A7	304 SSSL	2	2

**NOTES AND TOLERANCES: (UNLESS OTHERWISE SPECIFIED)**

DIMENSIONS ARE IN INCHES

TOLERANCES:  
 .XX ± .01  
 .XXX ± .005  
 ANGULAR ± 0.5°

1. INTERPRET DRAWING PER ASME Y14.5-1994.  
 2. REMOVE ALL SHARP EDGES, R.02 MIN.  
 3. DO NOT SCALE FROM DRAWING.  
 4. ALL MACHINING FLUIDS MUST BE FULLY SYNTHETIC, FULLY WATER SOLUBLE AND FREE OF SULFUR, SILICONE, AND CHLORINE.

**MATERIAL** N/A **FINISH** N/A μinch

**LIGO** CALIFORNIA INSTITUTE OF TECHNOLOGY MASSACHUSETTS INSTITUTE OF TECHNOLOGY

**ADVANCED LIGO** **COC**

**PART NAME** CP, COC CONTAINER ASSEMBLY

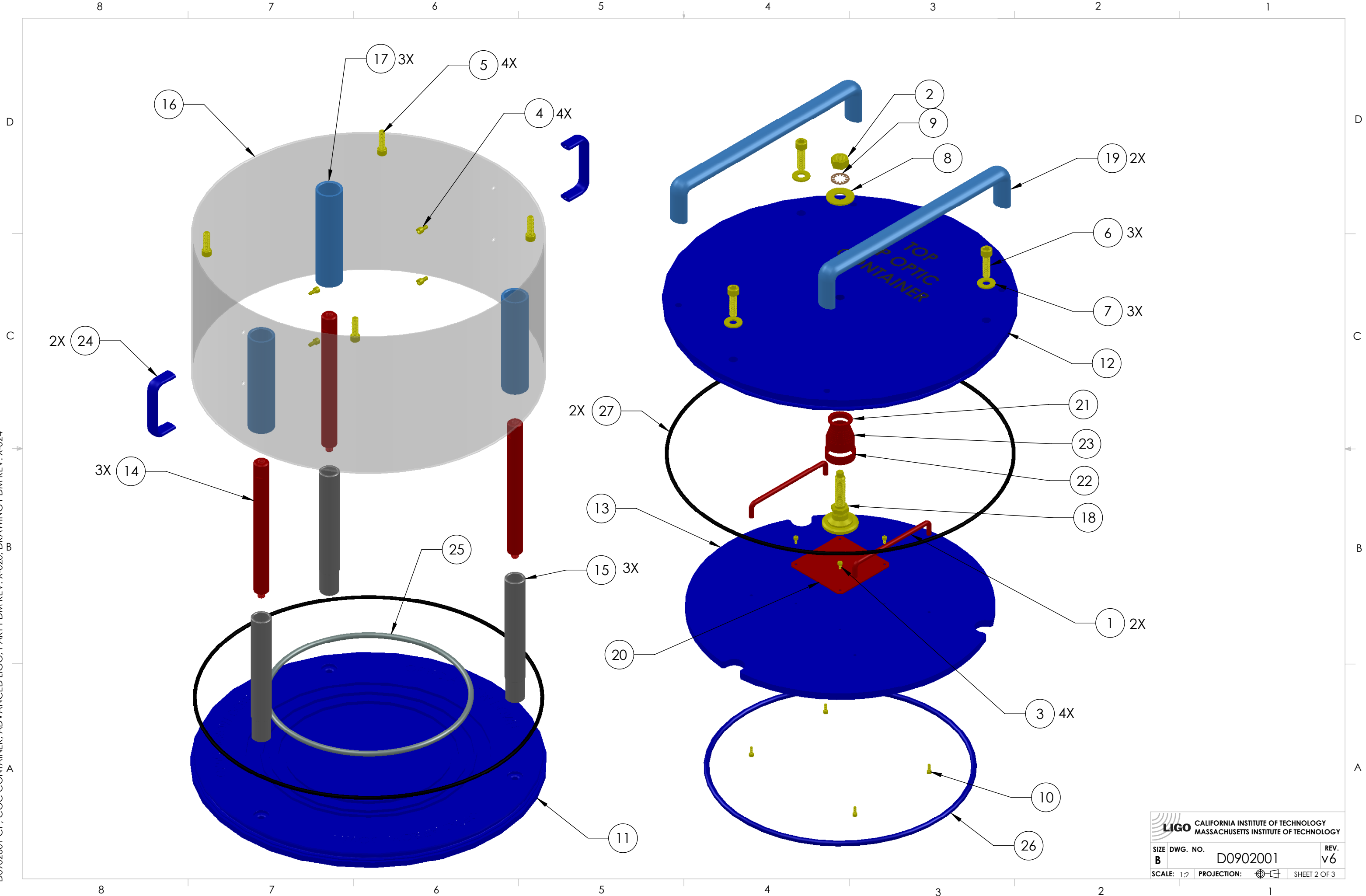
**DESIGNER** K. BUCKLAND 28 AUG 2009 **SIZE** B **DWG. NO.** D0902001 **REV.** v6


**DRAFTER** K. BUCKLAND 1 SEPT 2009

**CHECKER** K. MAILAND 8 OCT 2009

**APPROVAL** C. TORRIE 8 OCT 2009 **SCALE:** 1:4 **PROJECTION:** **SHEET 1 OF 3**

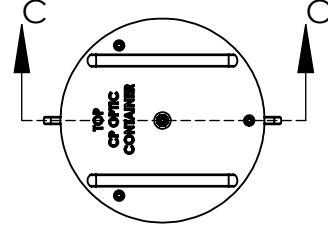
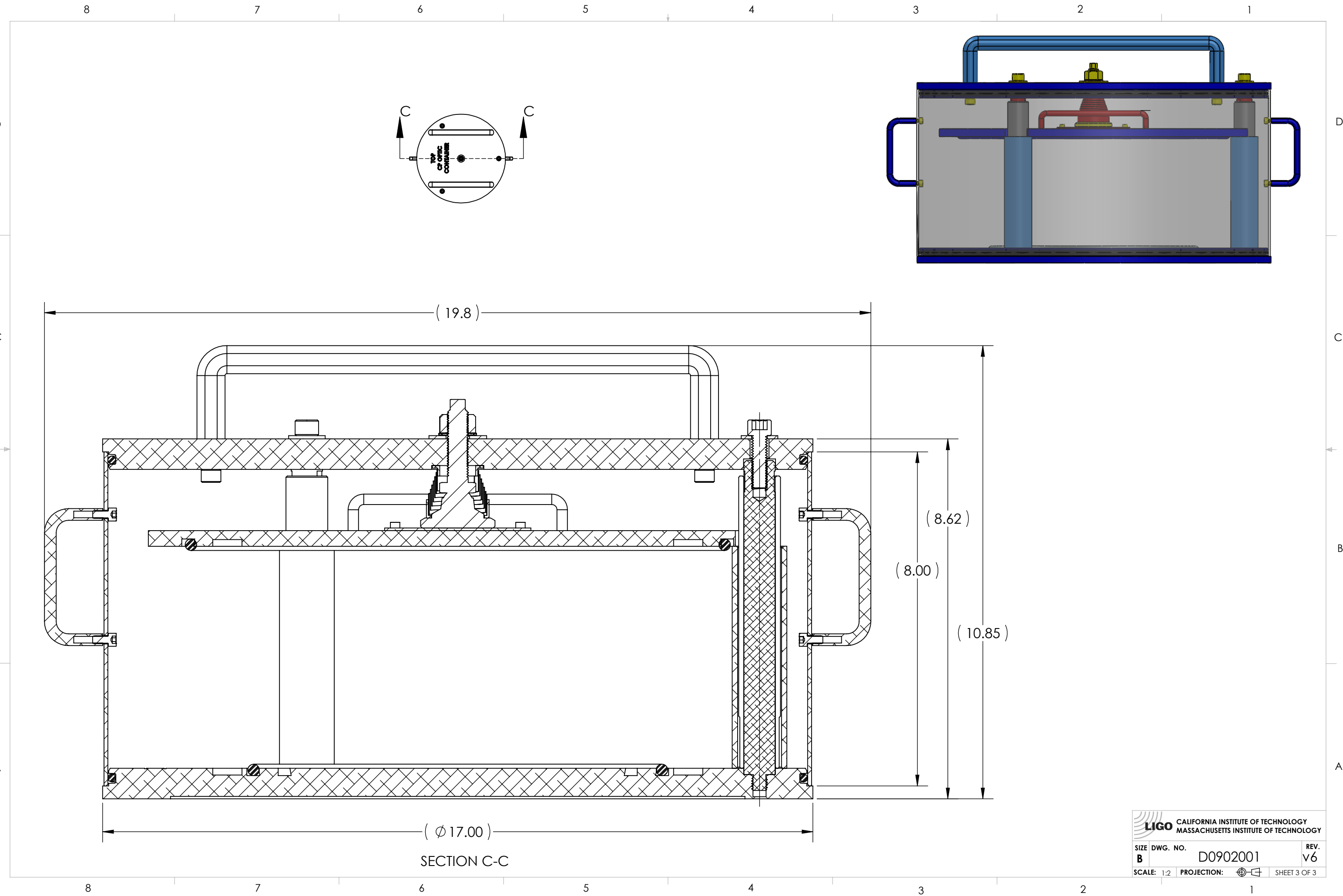
D0902001 CP, COC CONTAINER, ADVANCED LIGO, PART PDM REV: X-020, DRAWING PDM REV: X-024



 CALIFORNIA INSTITUTE OF TECHNOLOGY  
 MASSACHUSETTS INSTITUTE OF TECHNOLOGY

SIZE	DWG. NO.	REV.
B	D0902001	V6
SCALE: 1:2	PROJECTION:	SHEET 2 OF 3

D0902001 CP, COC CONTAINER, ADVANCED LIGO, PART PDM REV: X-020, DRAWING PDM REV: X-024



( 19.8 )

( 8.62 )

( 8.00 )

( 10.85 )

(  $\phi$  17.00 )

SECTION C-C

**LIGO** CALIFORNIA INSTITUTE OF TECHNOLOGY  
 MASSACHUSETTS INSTITUTE OF TECHNOLOGY

SIZE	DWG. NO.	REV.
B	D0902001	V6
SCALE: 1:2		PROJECTION:
		SHEET 3 OF 3