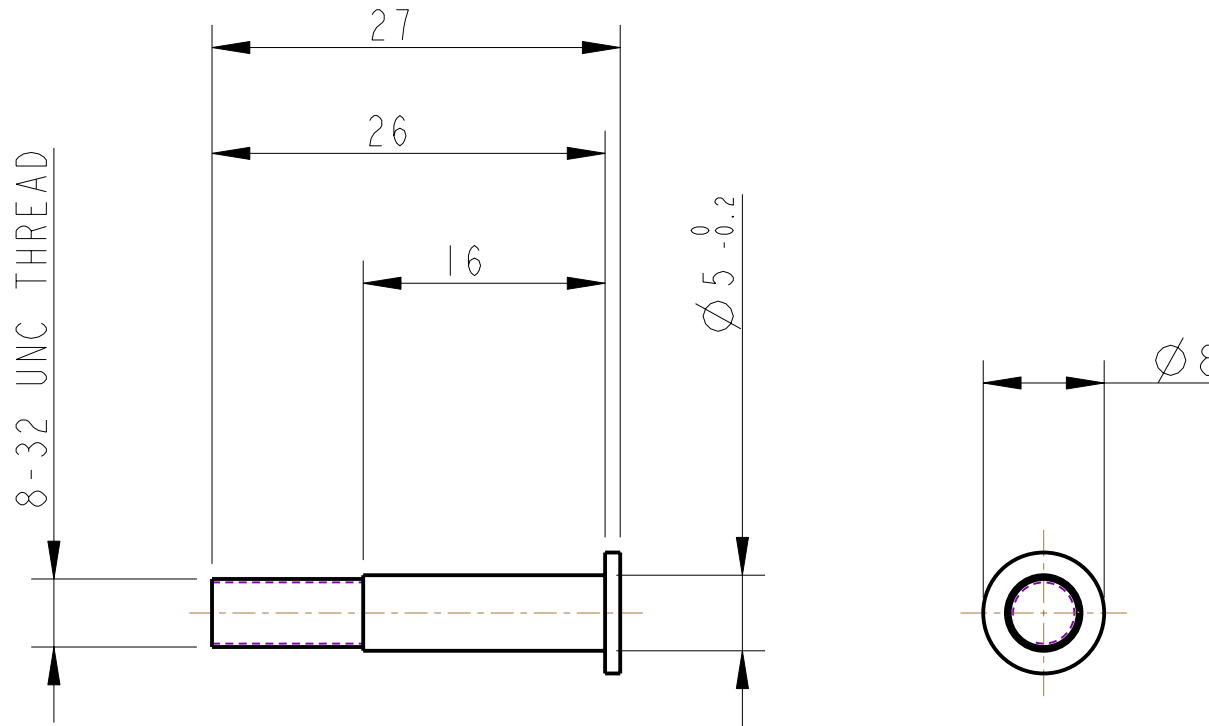


REV.	DATE	DCN #	DRAWING TREE #



NOTES: (UNLESS OTHERWISE SPECIFIED)

1. REMOVE ALL SHARP EDGES, R.02 MIN.
2. DO NOT SCALE FROM DRAWING.
3. ALL MACHINING FLUIDS SHALL BE WATER SOLUBLE AND FREE OF SULFUR, CHLORINE AND SILICONE, SUCH AS CINCINNATI MILACRON'S CIMTECH 410 (STAINLESS STEEL)
4. SCRIBE, ENGRAVE OR STAMP DRAWING PARTNUMBER ON NOTED SURFACE OF PART AND A THREE DIGIT SERIAL NUMBER. SERIAL NUMBERS START AT 001 FOR THE FIRST PART AND PROCEED CONSECUTIVELY. USE .07" HIGH CHARACTERS. EXAMPLE: D020188- 001. A VIBRATORY TOOL MAY BE USED.

DIMENSIONS ARE IN mm [INCHES]
TOLERANCES:

X.XX ± 0.2 mm
ANGULAR $\pm 0.25^\circ$

MATERIAL: ST STEEL
304/316

FINISH: CLEAN, GREASE FREE
 $\sqrt{\mu m}$ [μin]
Ra = 1.6

	NAME	DATE
DRAWN	REV/FEL	21/12/07
CHECKED	J'OD	DEC/07
APPROVED	IW	DEC/07



SYSTEM	ADVANCED LIGO
SUB-SYSTEM	SUS
NEXT ASSY	D080080
PART NAME	BLADE STOP PIN BS TOP STAGE

SIZE	DRG. NO.	REV
A	D080089	E
SCALE 2:1	PROJECTION:	SHEET 1 OF 1