

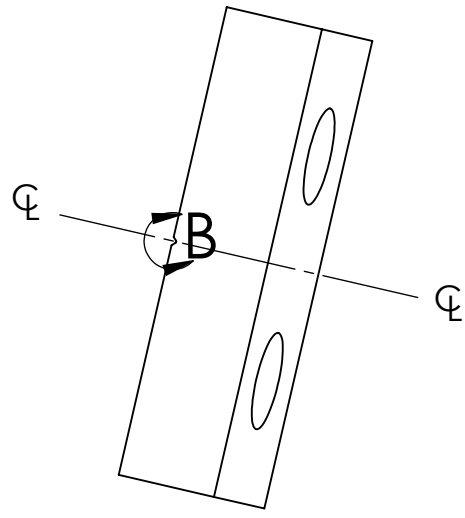
NOTES CONTINUED:

5. SCRIBE, ENGRAVE, OR MECHANICALLY STAMP (NO INKS OR DYES) DRAWING PART NUMBER, REVISION (AND VARIANT OR "TYPE" IF APPLICABLE) ON NOTED SURFACE OF PART FOLLOWED ON THE NEXT LINE WITH A THREE DIGIT SERIAL NUMBER. SERIAL NUMBERS START AT 101 FOR THE FIRST ARTICLE AND PROCEED CONSECUTIVELY. USE MINIMUM 0.12" HIGH CHARACTERS, UNLESS THE SIZE OF THE PART DICTATES SMALLER CHARACTERS. A VIBRATORY TOOL MAY BE USED.
EXAMPLE: DXXXXXX-VY, TYPE-XX, S/N XXX

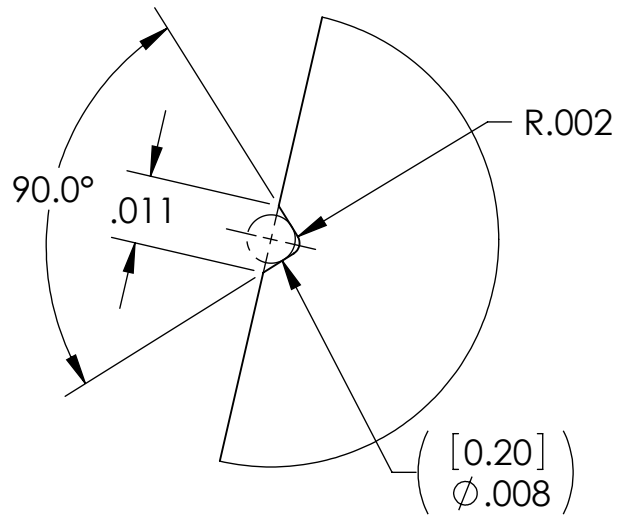
6. DO NOT BREAK INDICATED SHARP EDGES.

7. APPROXIMATE WEIGHT = 0.008 LB.
8. MACHINE ALL SURFACES TO REMOVE OXIDES AND MILL FINISH. USE OF ABRASIVE REMOVAL TECHNIQUES IS NOT ALLOWED.
9. ALL PARTS SHALL BE MANUFACTURED IN ACCORDANCE WITH LIGO SPECIFICATION E0900364.

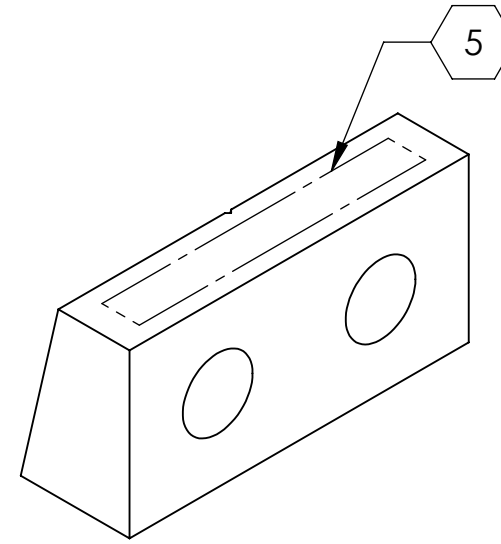
REV.	DATE	DCN #	DRAWING TREE #
v1	01 JUN 2010	E0900500	E0900353
-	-	-	-
-	-	-	-



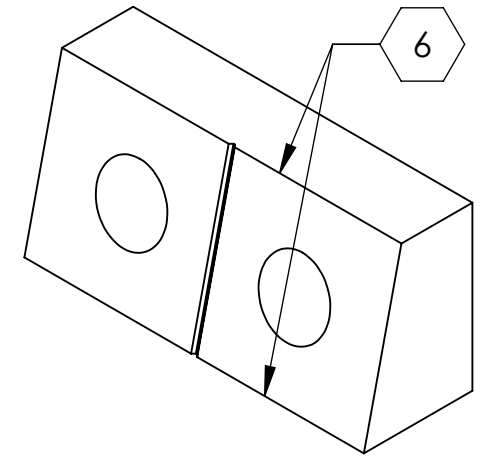
VIEW A-A



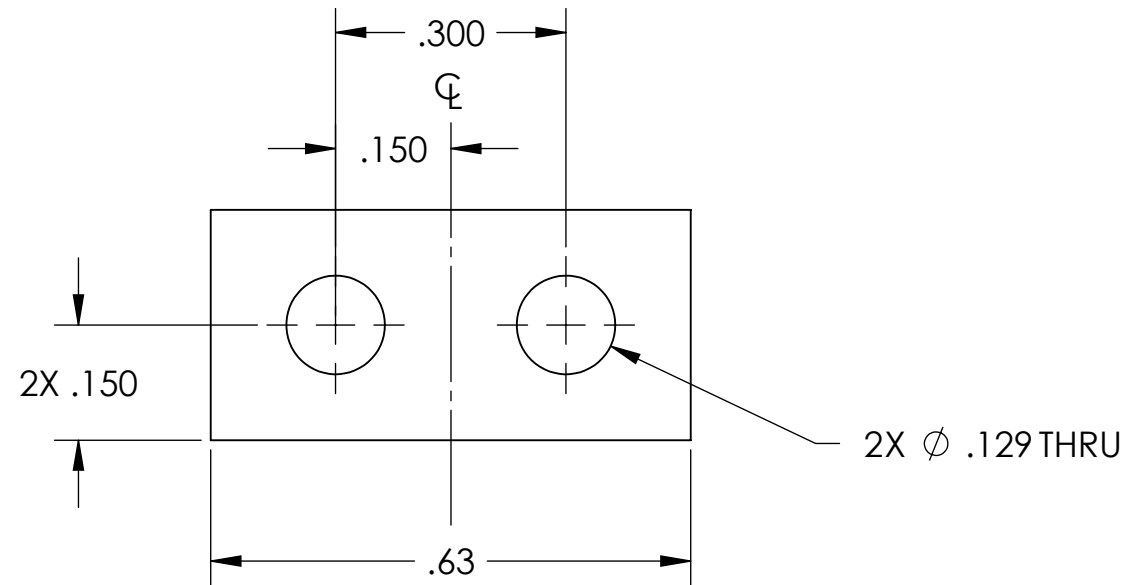
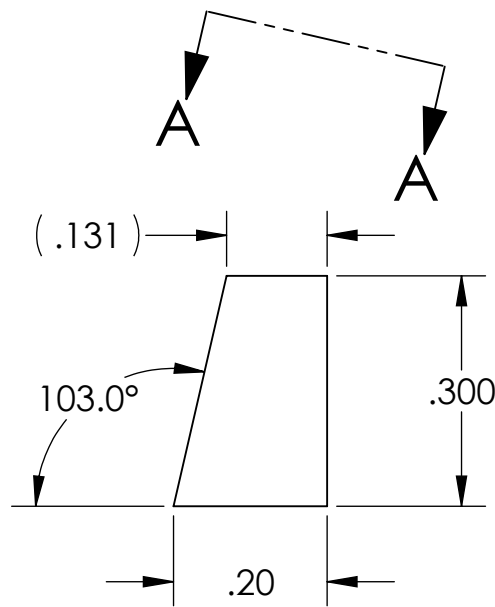
DETAIL B
SCALE 32 : 1



ISOMETRIC VIEW



REVERSE ISO VIEW



D0901903_AdvLIGO_SUS_HSTS_Intermediate Wire Clamp (Lower), PART PDM REV: X-005, DRAWING PDM REV: X-009

NOTES AND TOLERANCES: (UNLESS OTHERWISE SPECIFIED)

DIMENSIONS ARE IN INCHES	
TOLERANCES: .XX ± .01 .XXX ± .005 ANGULAR ± 0.5°	
MATERIAL	FINISH
304, 316 OR 302 SSSL	32 μinch

LIGO CALIFORNIA INSTITUTE OF TECHNOLOGY MASSACHUSETTS INSTITUTE OF TECHNOLOGY	
SYSTEM	SUB-SYSTEM
ADVANCED LIGO	SUS
NEXT ASSY	D0901905

PART NAME			
INTERMEDIATE WIRE CLAMP, OUTSIDE, HSTS			
DESIGNER	M. MEYER	01 SEP 2009	SIZE DWG. NO.
DRAFTER	B. MOORE	27 JAN 2010	B
CHECKER	M. MEYER	28 JAN 2010	D0901903
APPROVAL			v1
SCALE: 4:1		PROJECTION:	SHEET 1 OF 1