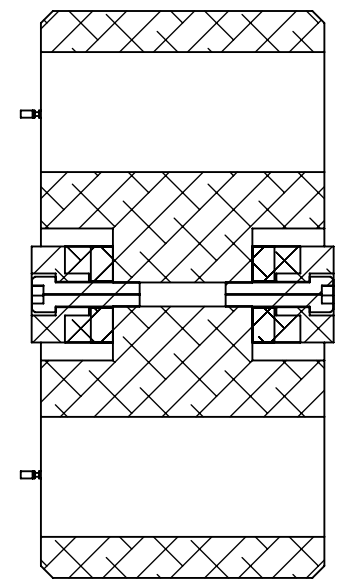
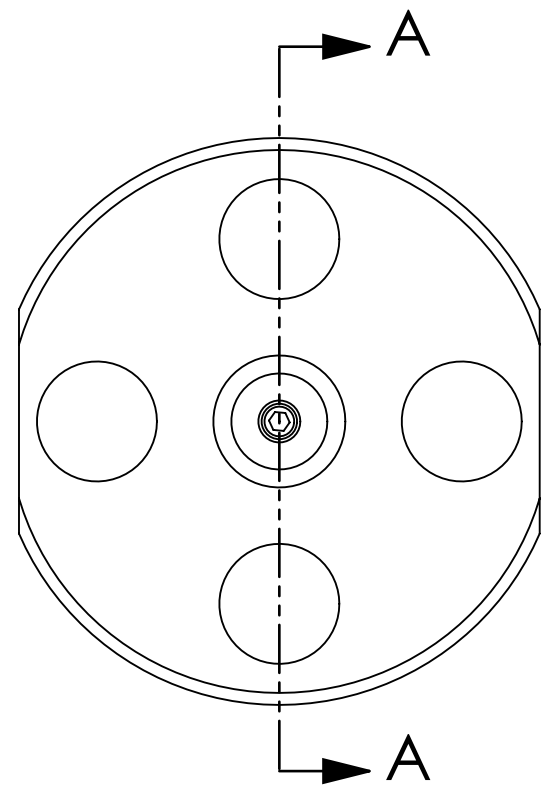
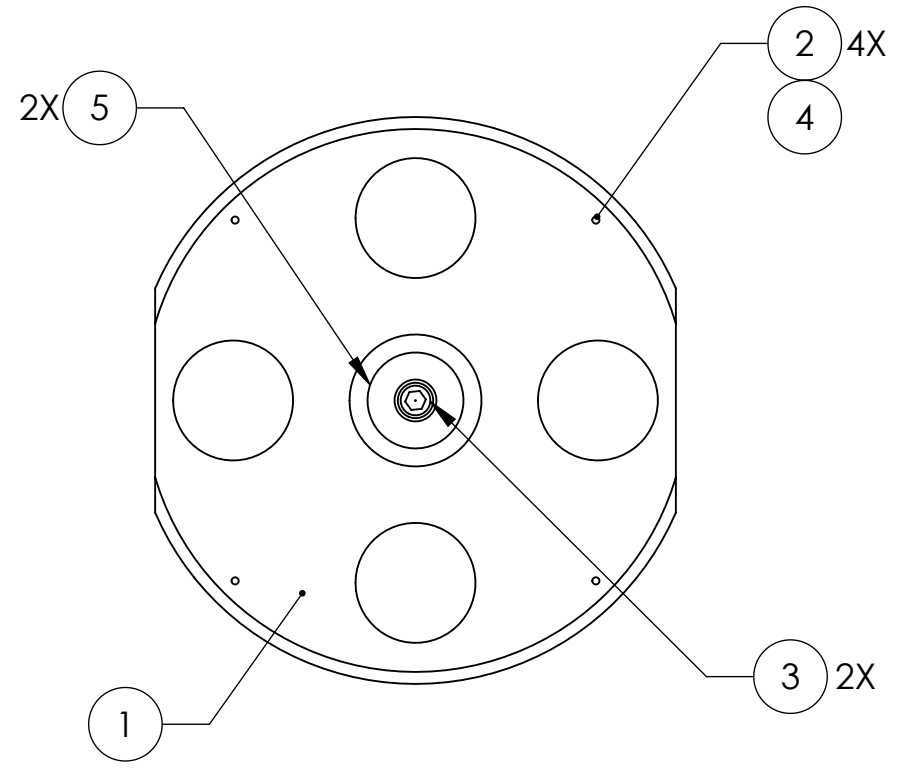


D0901873\_AdvLIGO\_SUS\_HSTS\_Intermediate Mass Assembly, PART PDM REV: V1, DRAWING PDM REV: V1

REV.	DATE	DCN #	DRAWING TREE #
v1	30 DEC 2009	E0900503	E0900353
-	-	-	-
-	-	-	-



SECTION A-A  
SCALE 1 : 2



ALT	PART NUMBER	DESCRIPTION	MATERIAL	REQ	SPARE	TOTAL
	D030078	ADD-ON MASS, 20g	304, 316 OR 302 SSSL	AR	-	AR
	D020351	ADD-ON MASS, 50g	304, 316 OR 302 SSSL	AR	-	AR
	5 D020350	ADD-ON MASS, 100g	304, 316 OR 302 SSSL	AR	-	AR
	4 -	UHV-COMPATIBLE ADHESIVE (CERAMABOND #835M OR EQUIVALENT)	-	AR	-	AR
	3 -	SCREW, SOCKET HEAD CAP, 1/4-20 UNC-2A X 0.875 LONG, VENTED	300 SSSL	2	1	3
	2 D020661	MAGNET-STANDOFF ASSEMBLY, INT. MASS	N/A	4	1	5
	1 D0901792	INTERMEDIATE MASS, HSTS	6061-T6 Al	1	-	1
ITEM NO.	PART NUMBER	DESCRIPTION	MATERIAL	REQ	SPARE	TOTAL

PARTS LIST

**NOTES: (UNLESS OTHERWISE SPECIFIED)**  
 1. PARTS TO BE ASSEMBLED ACCORDING TO E030518, HSTS ASSEMBLY SPECIFICATION, USING D020427, HSTS MAGNET PLACEMENT FIXTURE.

CALIFORNIA INSTITUTE OF TECHNOLOGY MASSACHUSETTS INSTITUTE OF TECHNOLOGY		<b>PART NAME</b> INTERMEDIATE MASS ASSEMBLY, HSTS	
<b>SYSTEM</b> ADVANCED LIGO	<b>SUB-SYSTEM</b> SUS	<b>DESIGNER</b> M. MEYER	<b>DATE</b> 25 AUG 2009
<b>DRAFTER</b> W. RASCH	<b>CHECKER</b> M. MEYER	<b>DATE</b> 27 OCT 2009	<b>DATE</b> 27 OCT 2009
<b>NEXT ASSY</b> D020700	<b>APPROVAL</b>	<b>SIZE</b> B	<b>DWG. NO.</b> D0901873
		<b>SCALE:</b> 1:1	<b>PROJECTION:</b>
		SHEET 1 OF 1	

8 7 6 5 4 3 2 1

D C B A

D C B A

8 7 6 5 4 3 2 1