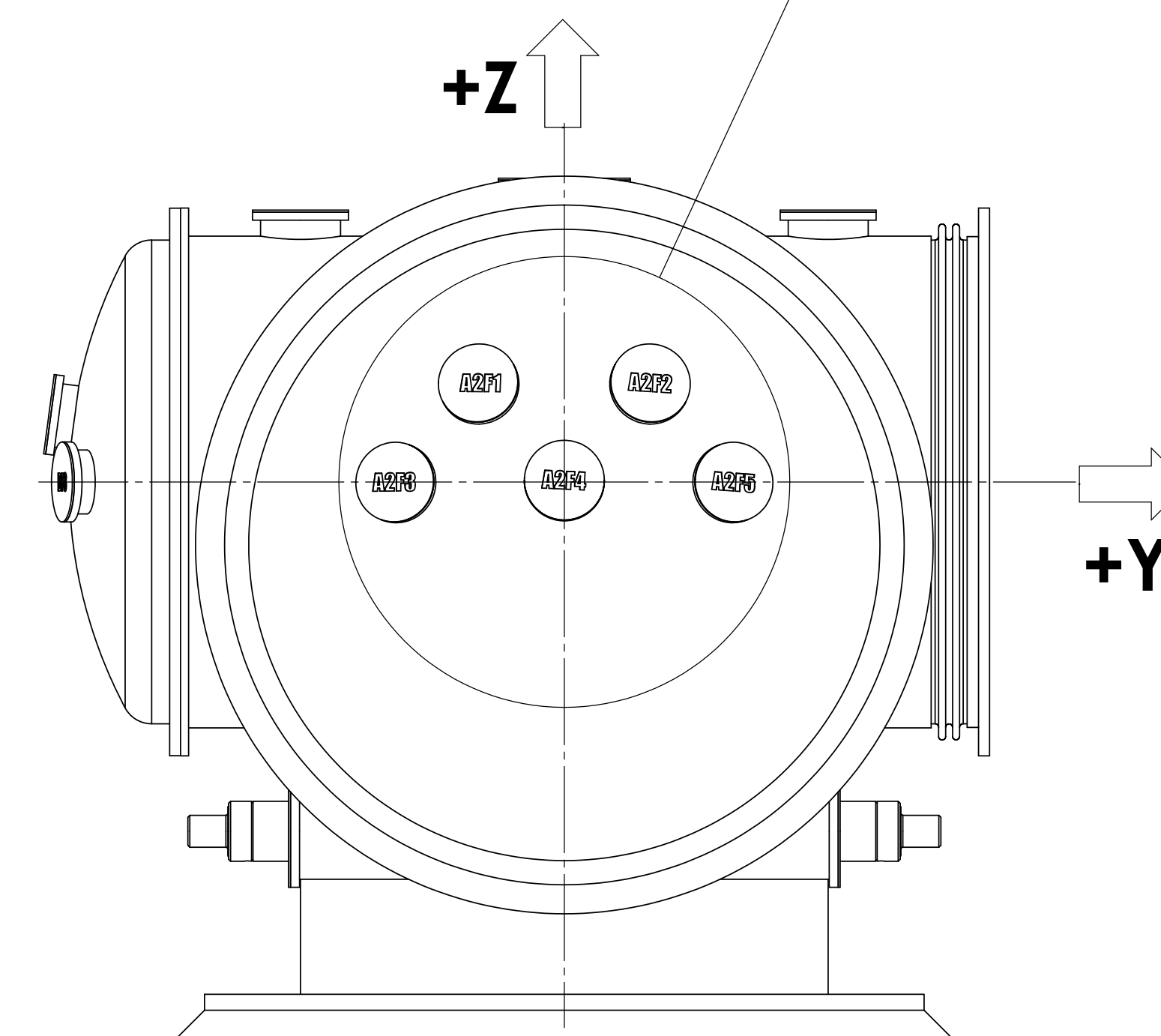
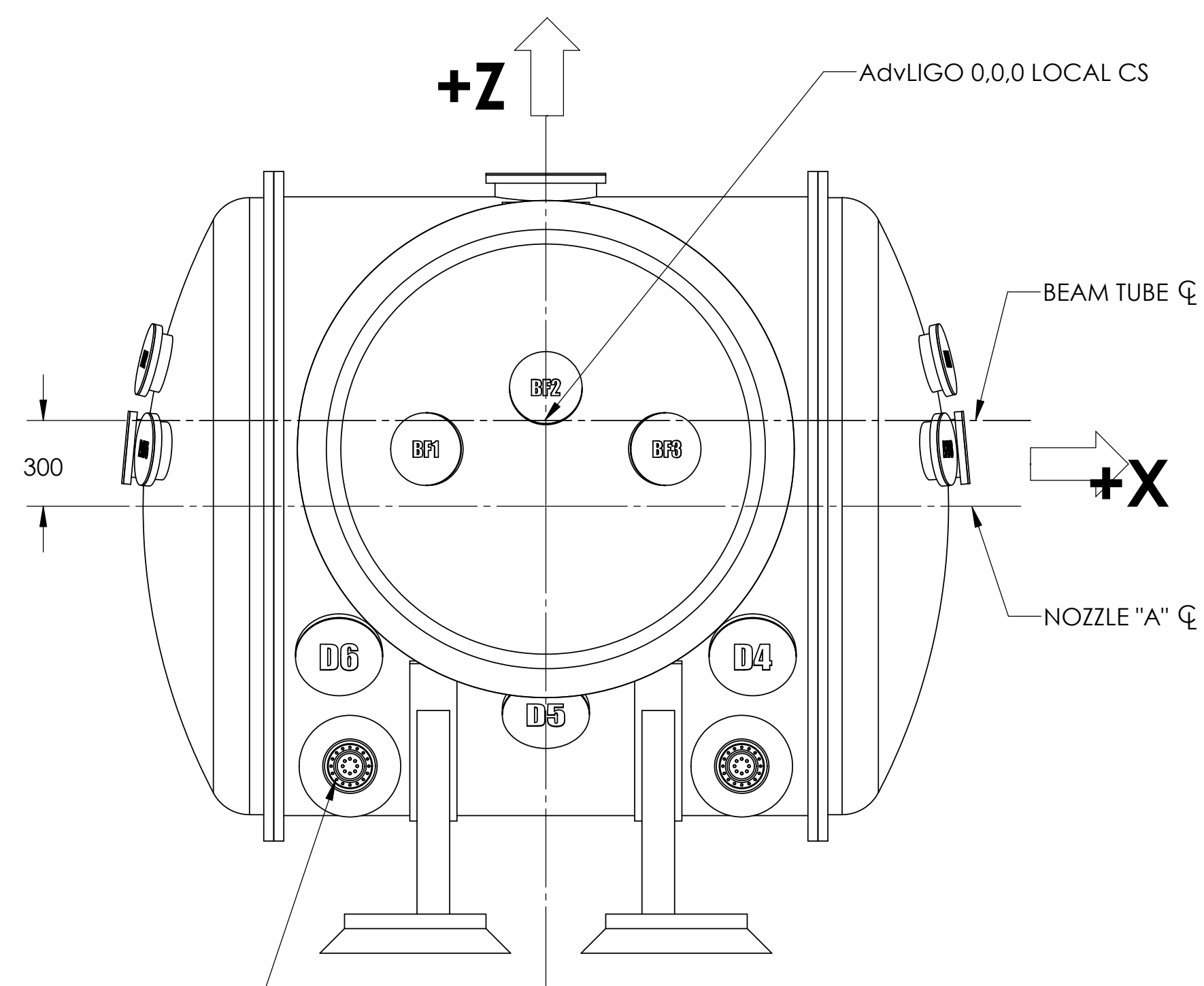
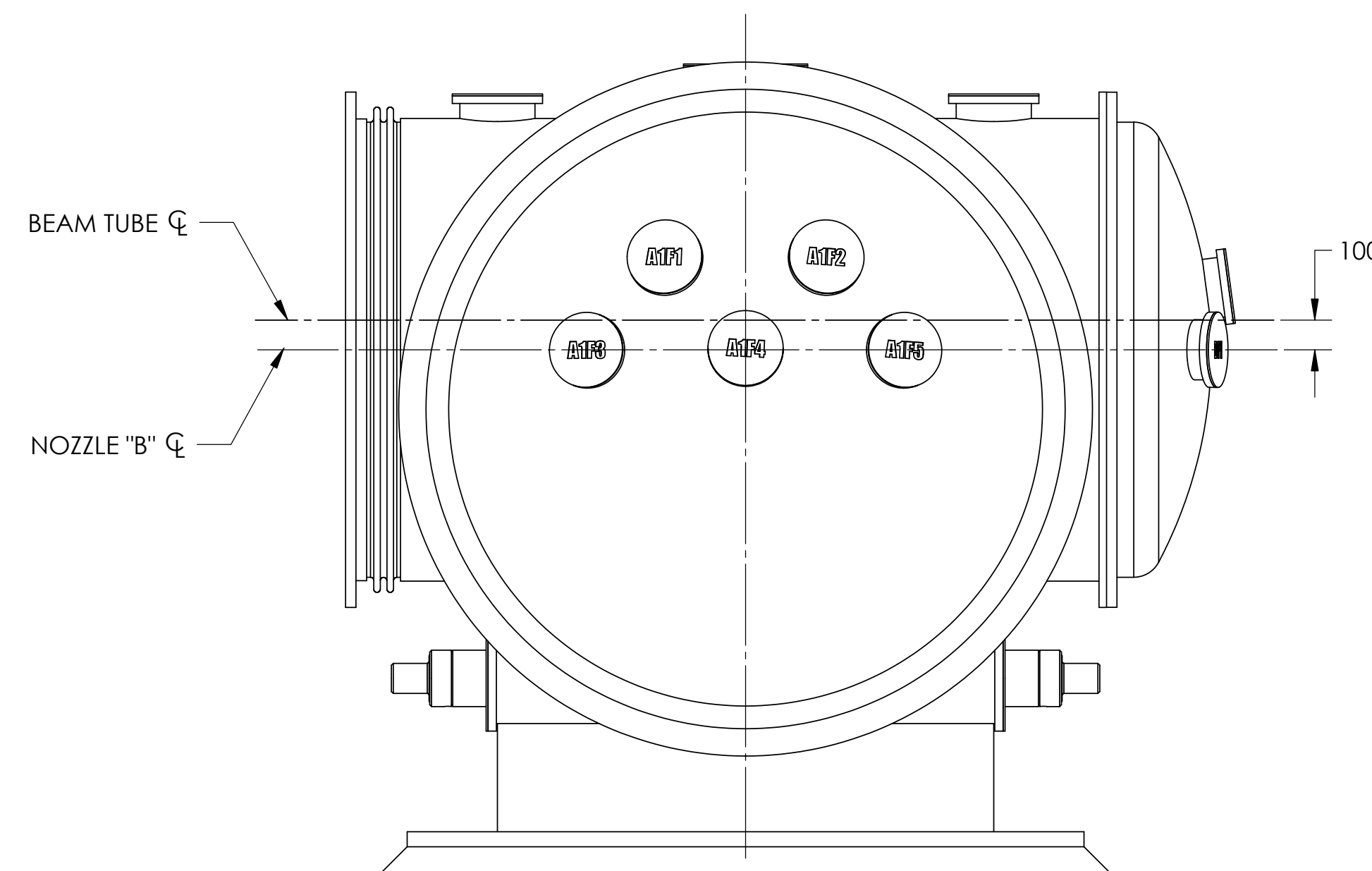
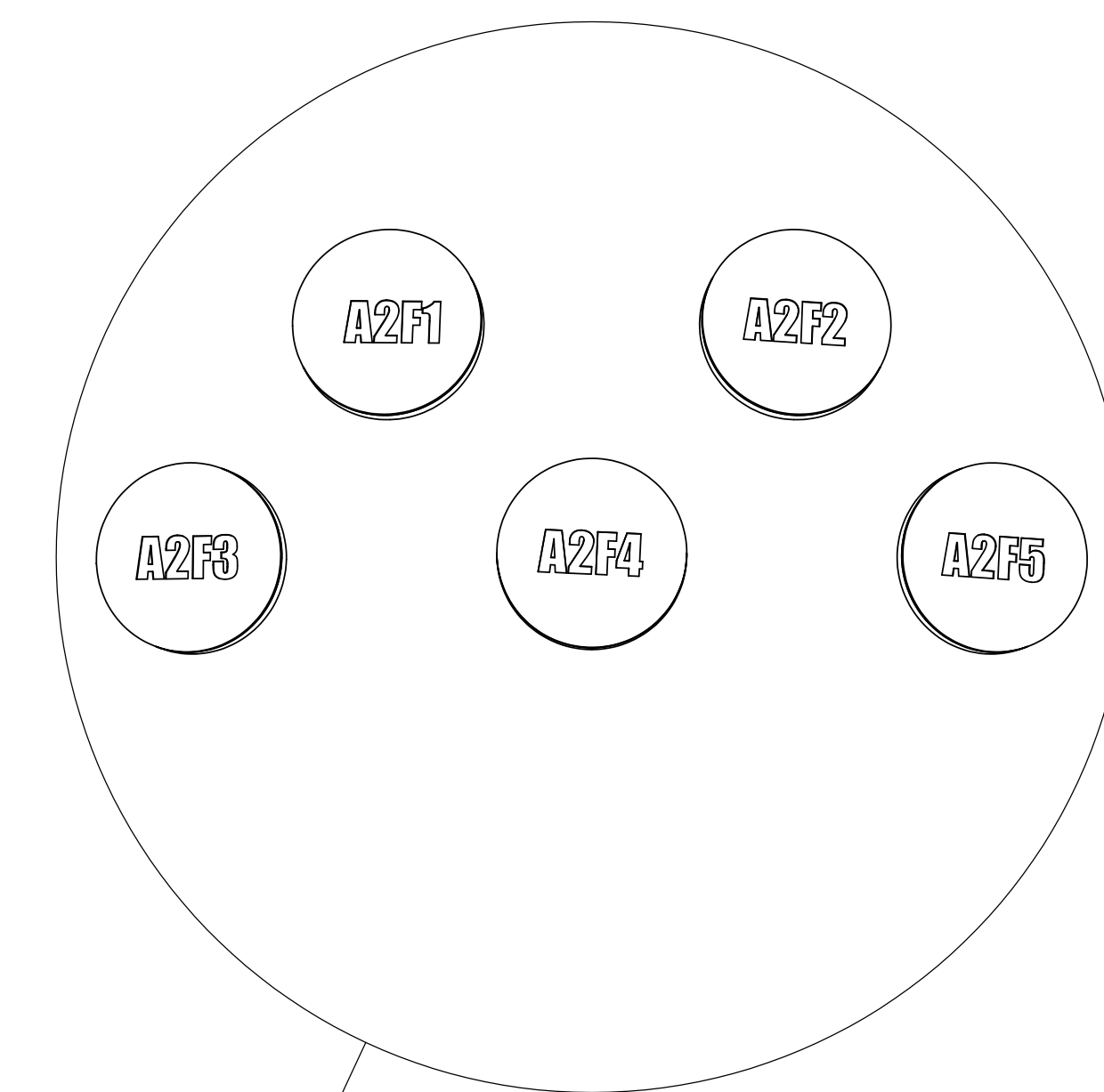
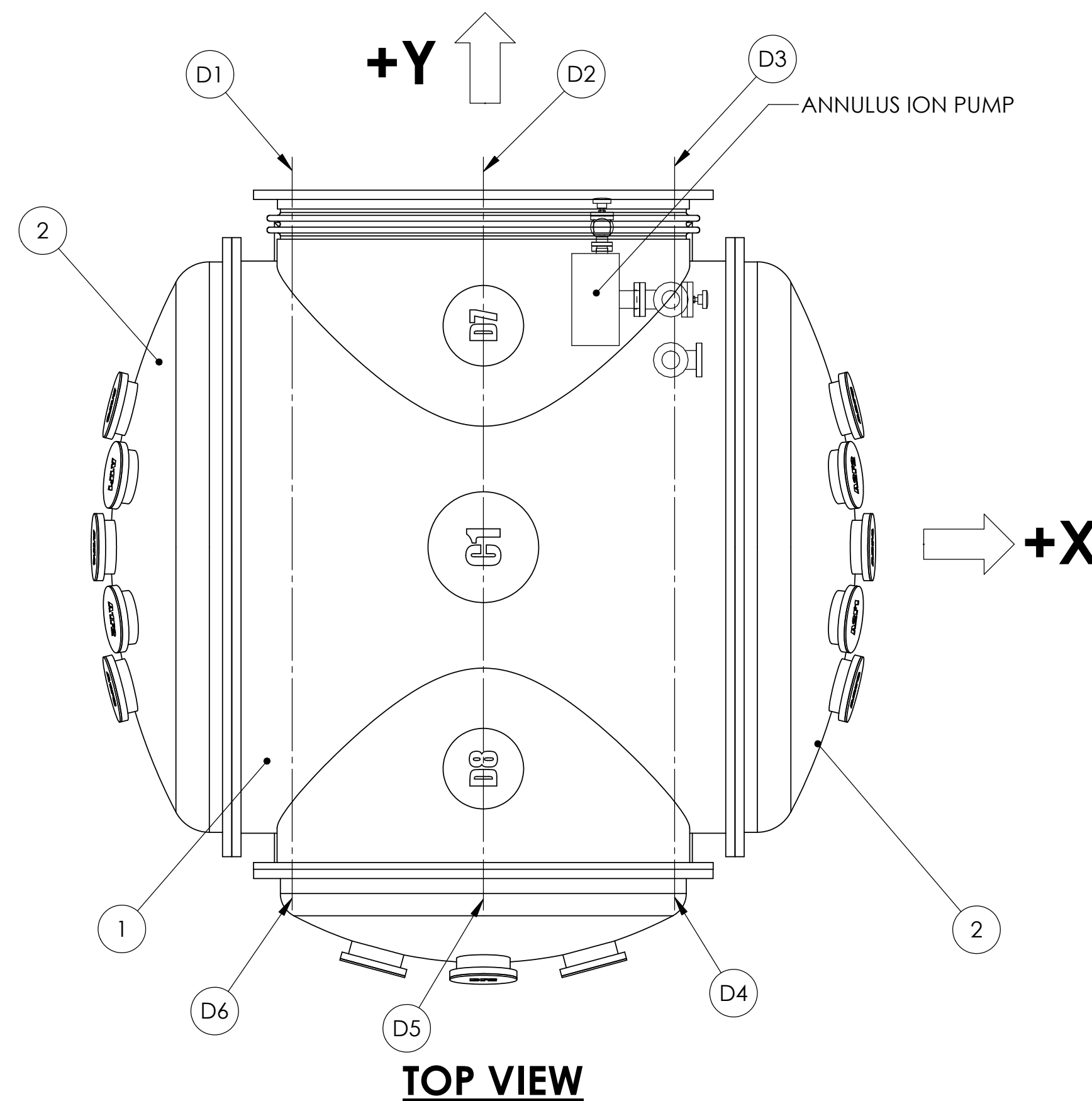
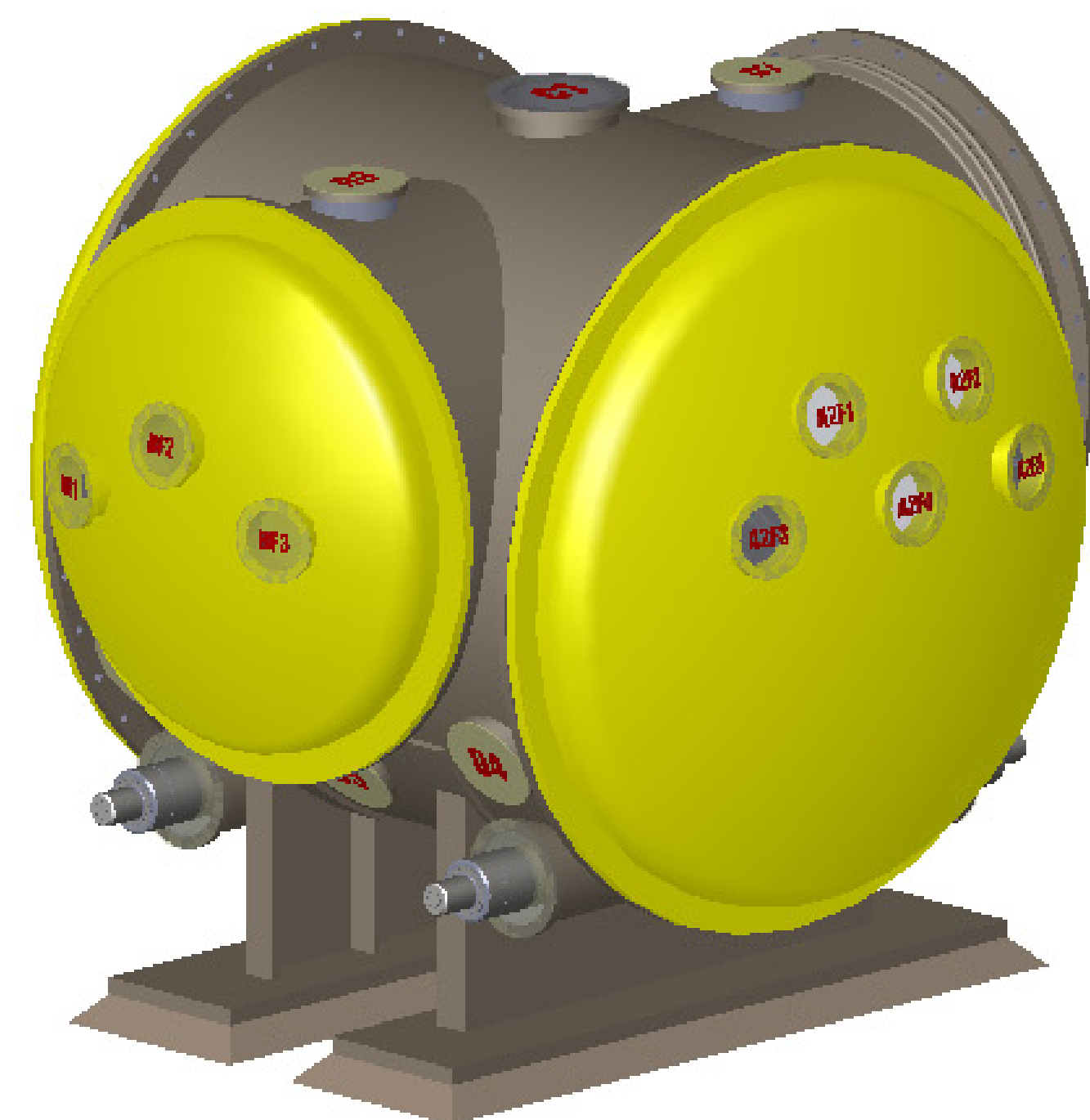


REV.	DATE	DCN #	DRAWING TREE #
v1	08 MAY 2012	-	-
-	-	-	-
-	-	-	-



LEFT VIEW

FRONT VIEW

**RIGHT VIEW
A2 ELEVATION SIDE**

D972610 HAM SUPPORT TUBE WELDMENTS
(SHOWN FOR REFERENCE ONLY)

NOTES AND TOLERANCES: (UNLESS OTHERWISE SPECIFIED)

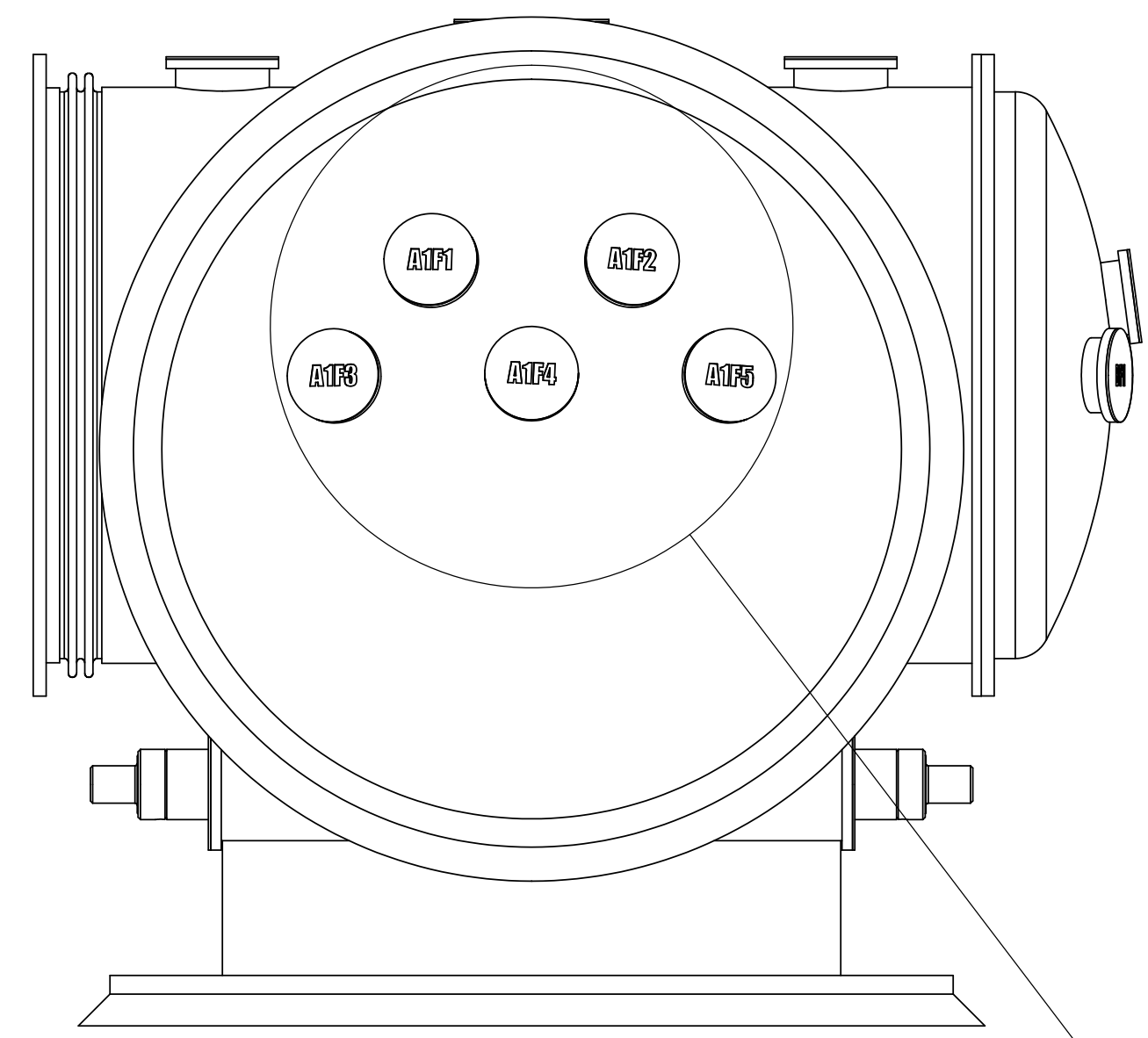
MATERIAL: -- FINISH: -- μinch

LIGO CALIFORNIA INSTITUTE OF TECHNOLOGY
MASSACHUSETTS INSTITUTE OF TECHNOLOGY
SYSTEM: ADVANCED LIGO SUB-SYSTEM: SUS
NEXT ASSY:

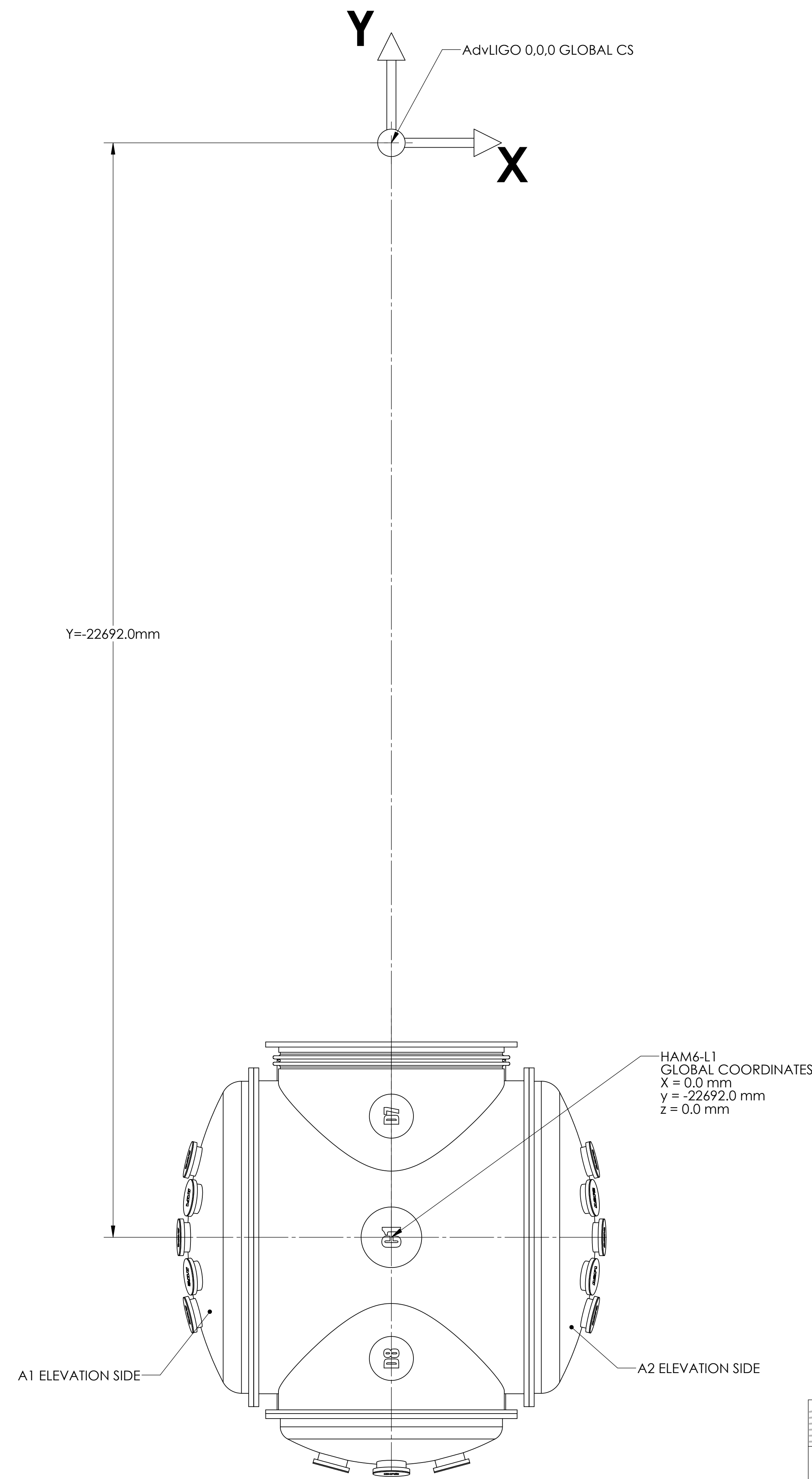
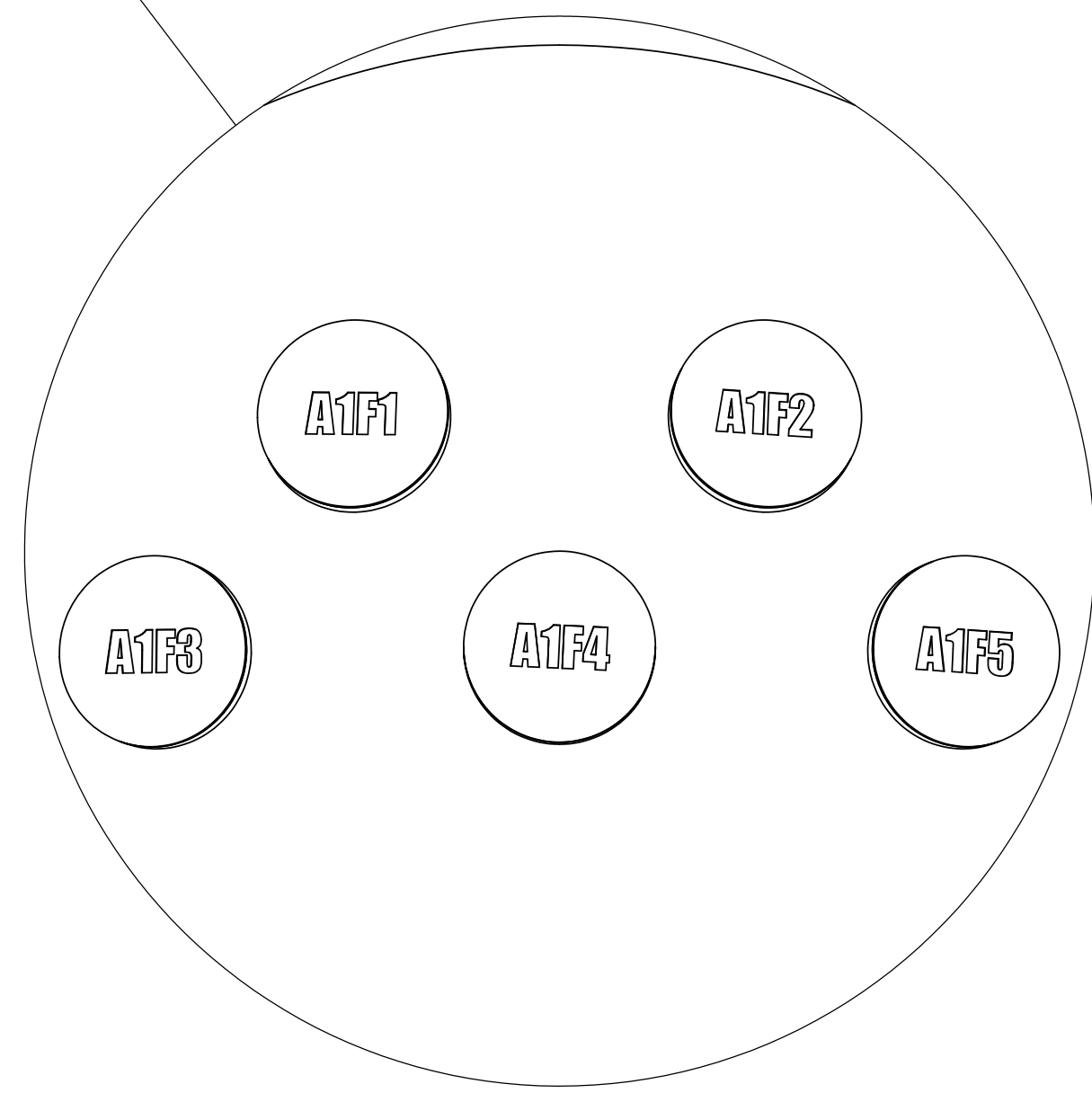
PART NAME: AdvLIGO VE HAM6-L1, Vacuum Equipment Assembly
DESIGNER: ED CHAVEZ SIZE: D DWG. NO.: D0901812 REV.: v1
DRAFTER: ED CHAVEZ DATE: 09 MAY 2012
CHECKER: SEE DCC SEE DCC
APPROVAL: SEE DCC SEE DCC SCALE: 1:24 PROJECTION: SHEET 1 OF 2

ITEM NO.	PART NUMBER	DESCRIPTION	Default/ QTY.
1	D060160	AdvLIGO, HAM Shell Weldment ICD, HAM Chamber	1
2	D060159	AdvLIGO HAM Chamber, 84in Cover ICD	2
6	D060158	HAM Chamber 60in Cover ICD	1

D0901812 AdvLIGO VE HAM6-L1, Vacuum Equipment Assembly, PART PDM REV: X-019, DRAWING PDM REV: X-002



**LEFT VIEW
A1 ELEVATION SIDE**



AdvLIGO 0,0,0 GLOBAL CS

Y=-22692.0mm

HAM6-L1
GLOBAL COORDINATES
X = 0.0 mm
y = -22692.0 mm
z = 0.0 mm

A1 ELEVATION SIDE

A2 ELEVATION SIDE

LIGO CALIFORNIA INSTITUTE OF TECHNOLOGY MASSACHUSETTS INSTITUTE OF TECHNOLOGY	
SIZE DWG. NO.	REV.
D D0901812	v1
SCALE: 1:20	PROJECTION: SHEET 2 OF 2

D0901812.ASU/LIGO VE/HAM6-L1_Vacuum Equipment Assembly_PART PDM REV: X-019_DRAWING PDM REV: X-002