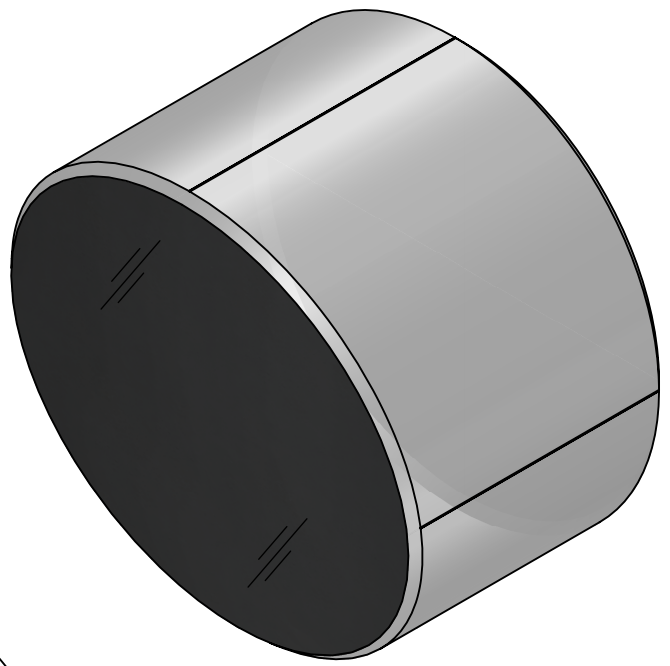
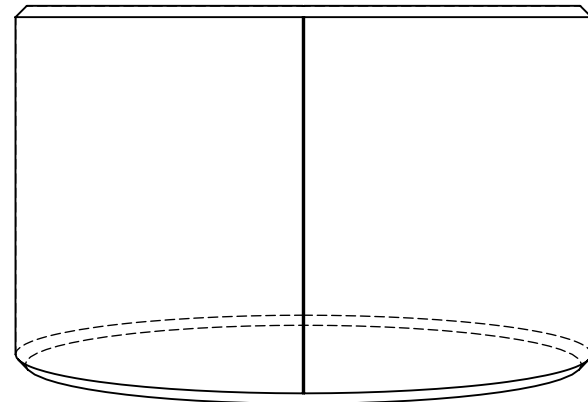


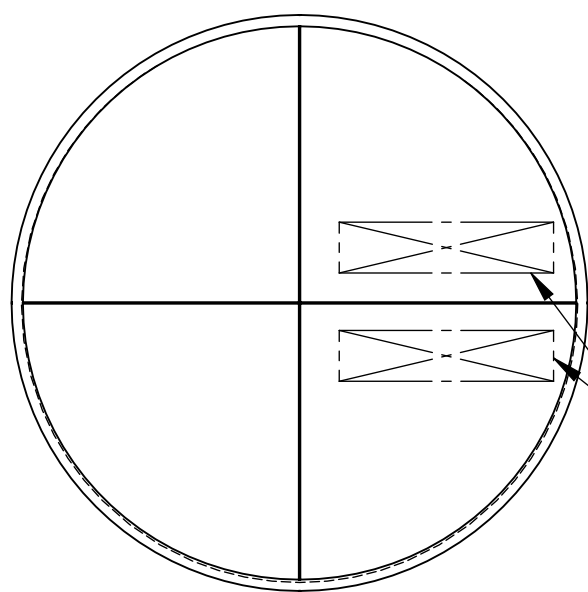
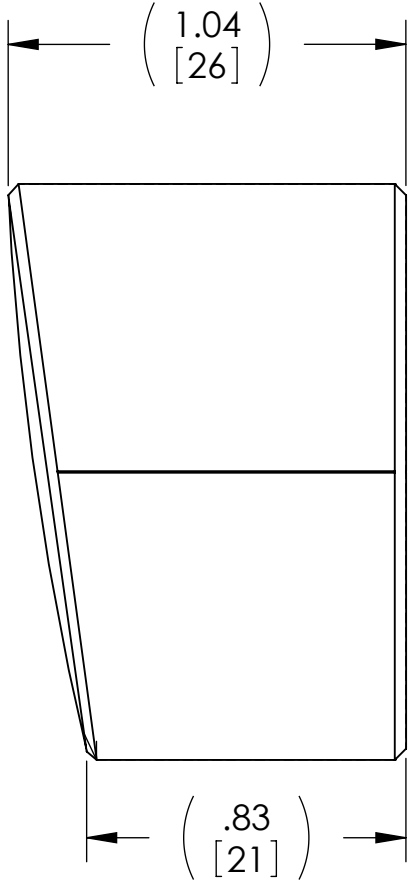
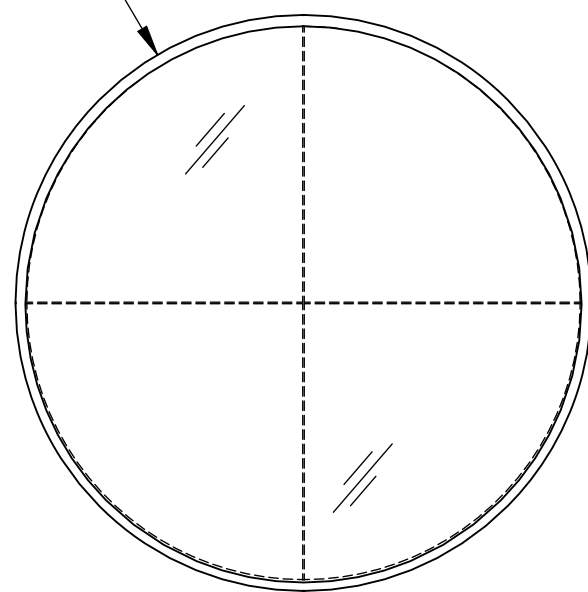
8 7 6 5 4 3 2 1

- NOTES :**
1. ALL PARTS AS SHOWN SHALL BE MANUFACTURED IN ACCORDANCE WITH LIGO SPECIFICATION E0900349.
 2. MASS: 69.5 G [0.153 LB].
 3. MARK SERIAL NUMBER IN NOTED REGION. MARK ACCORDING TO E0900349, SECTION 3.3.1.2.
 4. Add Protective silver Coating per LIGO-E1200321.

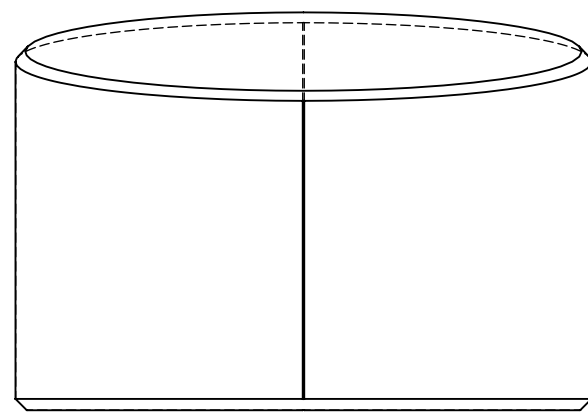
REV.	DATE	DCN #	DRAWING TREE #
v1	21 SEP 2011	E1100351	-
v2	08 FEB 2012	E1101192	-
v3	15 May 2012	E1101192	-



$(\phi 1.500)$
[38.1]



3



D0901565_AD/LIGO ETM TELESECONDARY, PART PDM REV: X-024, DRAWING PDM REV: X-011

D C B A

D C B A

NOTES AND TOLERANCES: (UNLESS OTHERWISE SPECIFIED)				LIGO CALIFORNIA INSTITUTE OF TECHNOLOGY MASSACHUSETTS INSTITUTE OF TECHNOLOGY		PART NAME	
DIMENSIONS ARE IN INCHES				ADVANCED LIGO		ETM TELESCOPE SECONDARY PARABOLIC MIRROR	
TOLERANCES: .XX ± .02 .XXX ± .005				SUB-SYSTEM AOS		DESIGNER M. SMITH 13 OCT 2009	
ANGULAR ± 1.0°				NEXT ASSY D1102361		DRAFTER J. TERRAZAS 08 FEB 2012	
MATERIAL ZERODUR		FINISH N/A μinch		CHECKER SEE DCN		SIZE DWG. NO. B D0901565	
				APPROVAL SEE DCN		REV. v3	
						SCALE: NONE PROJECTION: SHEET 1 OF 1	

8 7 6 5 4 3 2 1