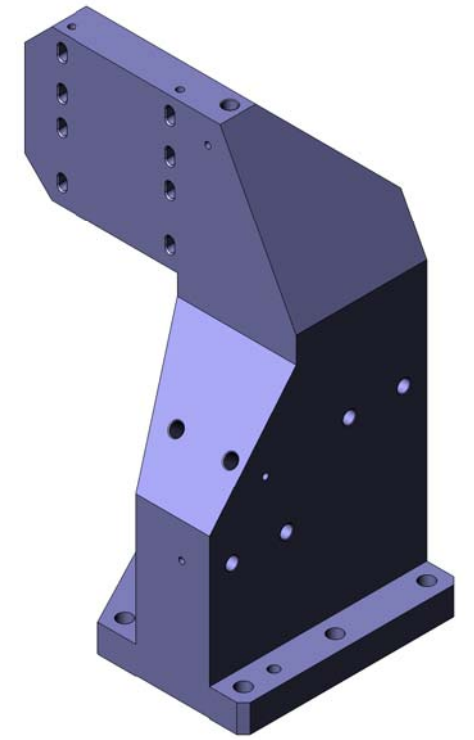
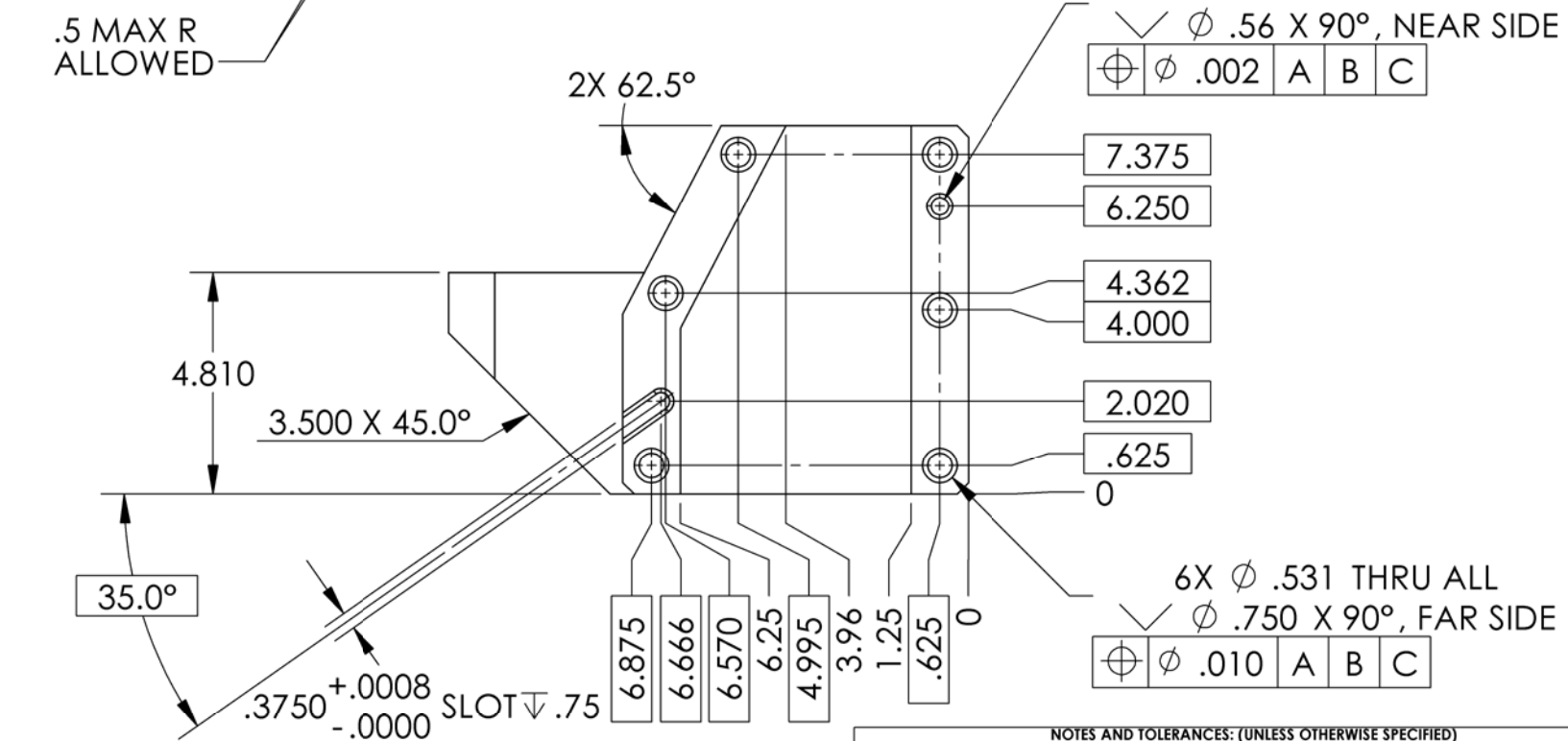
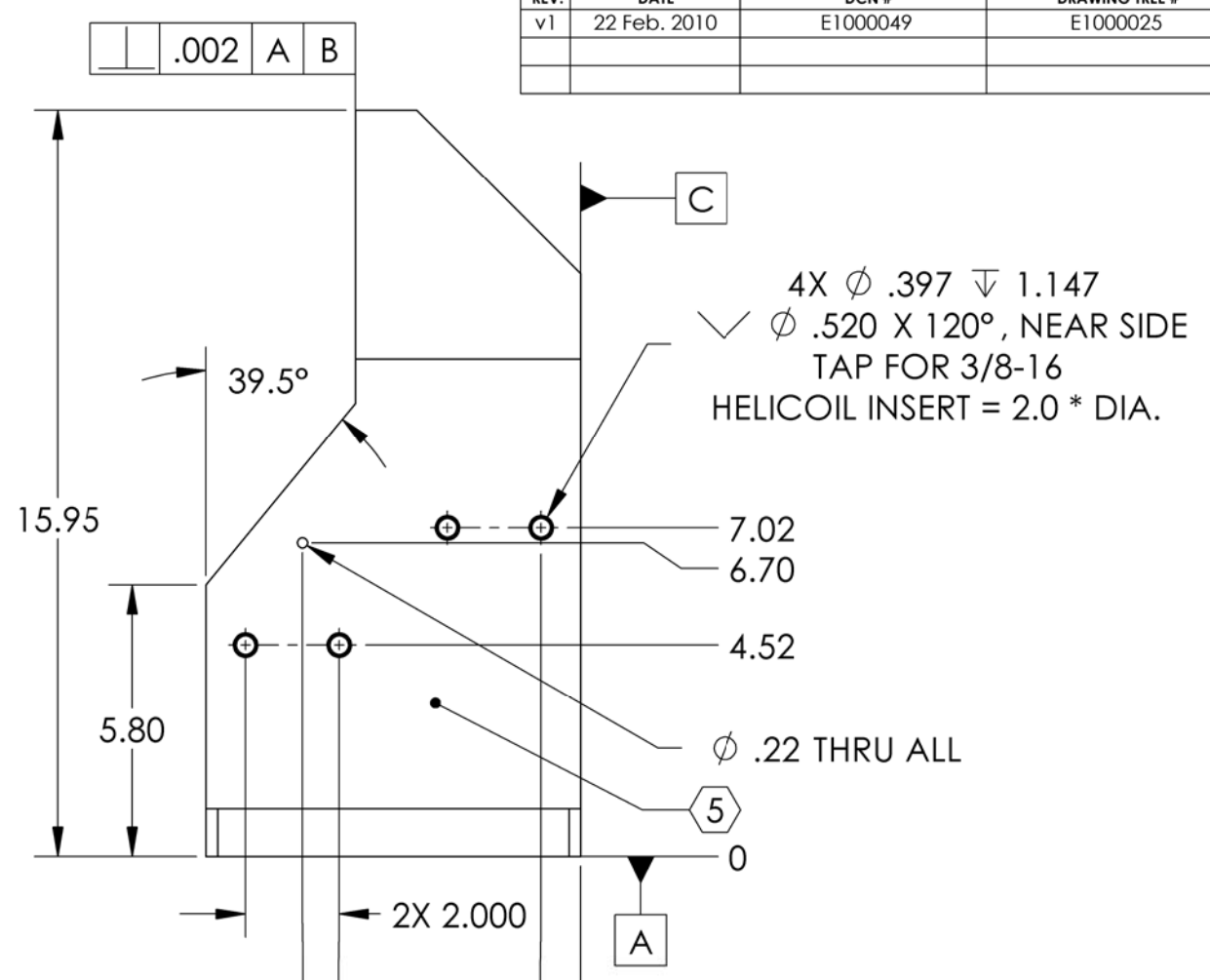
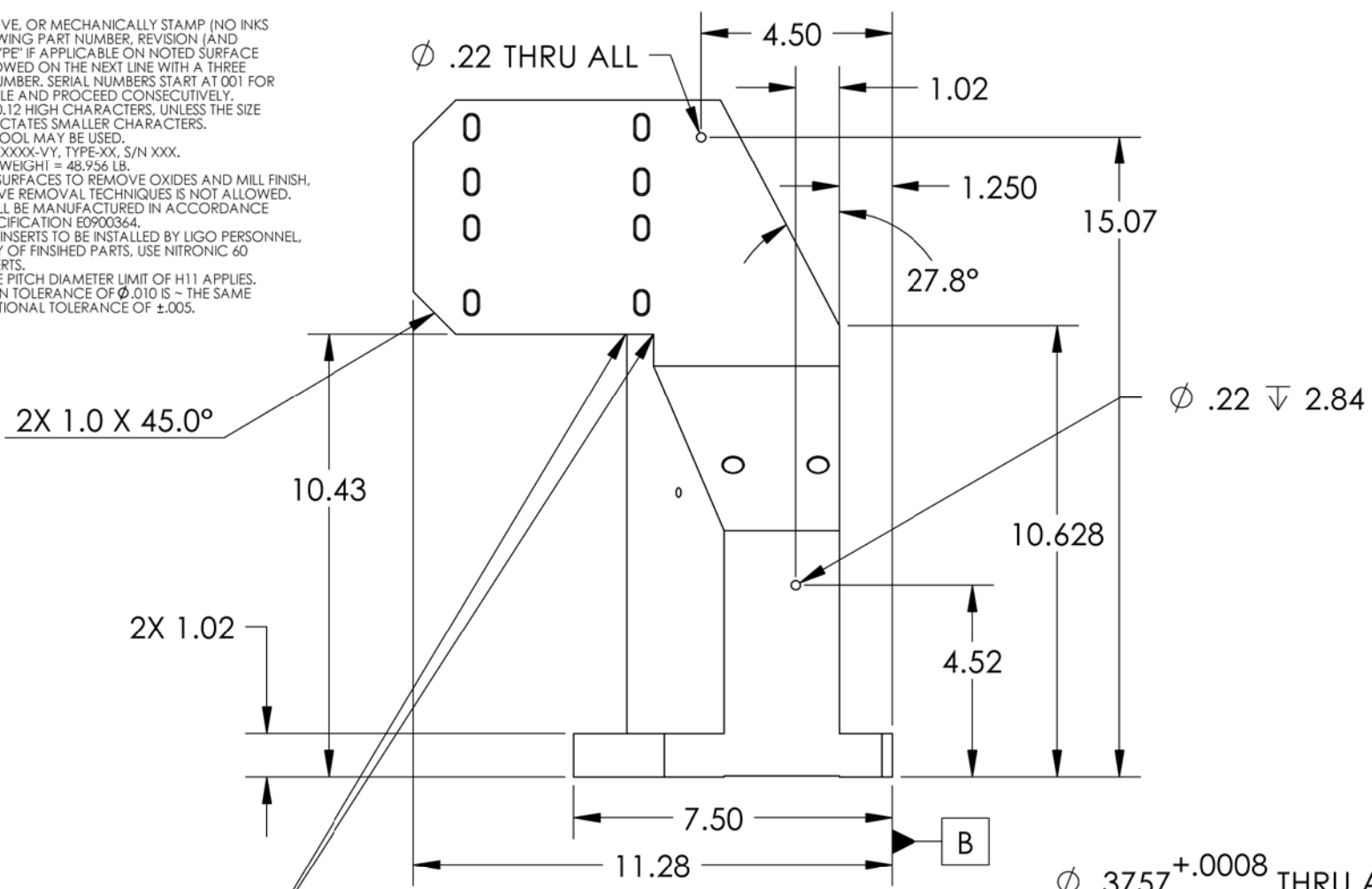


**NOTES CONTINUED:**

5. SCRIBE, ENGRAVE, OR MECHANICALLY STAMP (NO INKS OR DYES) DRAWING PART NUMBER, REVISION (AND VARIANT OR 'TYPE' IF APPLICABLE ON NOTED SURFACE OF PART FOLLOWED ON THE NEXT LINE WITH A THREE DIGIT SERIAL NUMBER. SERIAL NUMBERS START AT 001 FOR THE FIRST ARTICLE AND PROCEED CONSECUTIVELY. USE MINIMUM 0.12 HIGH CHARACTERS, UNLESS THE SIZE OF THE PART DICTATES SMALLER CHARACTERS. A VIBRATORY TOOL MAY BE USED. EXAMPLE DXXXXXX-VY, TYPE-XX, S/N XXX.
6. APPROXIMATE WEIGHT = 48.956 LB.
7. MACHINE ALL SURFACES TO REMOVE OXIDES AND MILL FINISH. USE OF ABRASIVE REMOVAL TECHNIQUES IS NOT ALLOWED.
8. ALL PARTS SHALL BE MANUFACTURED IN ACCORDANCE WITH LIGO SPECIFICATION E0900364.
9. ALL THREADED INSERTS TO BE INSTALLED BY LIGO PERSONNEL. AFTER DELIVERY OF FINISHED PARTS, USE NITRONIC #0 THREADED INSERTS.
10. A TAPPED HOLE PITCH DIAMETER LIMIT OF H11 APPLIES.
11. A TRUE POSITION TOLERANCE OF  $\phi .010$  IS THE SAME AS A CONVENTIONAL TOLERANCE OF  $\pm .005$ .

REV.	DATE	DCN #	DRAWING TREE #
v1	22 Feb. 2010	E1000049	E1000025

D0901554 Actuator Post Stage0-1, PART PDM REV: X-022, DRAWING PDM REV: X-008



BREAK EDGE .09 X 45°

$\phi .002$  A B C

BOUNDARY

**NOTES AND TOLERANCES: (UNLESS OTHERWISE SPECIFIED)**

1. INTERPRET DRAWING PER ASME Y14.5-1994.
2. REMOVE ALL SHARP EDGES, R.02 MIN.
3. DO NOT SCALE FROM DRAWING.
4. ALL MACHINING FLUIDS MUST BE FULLY SYNTHETIC, FULLY WATER SOLUBLE AND FREE OF SULFUR, SILICONE, AND CHLORINE.

DIMENSIONS ARE IN INCHES

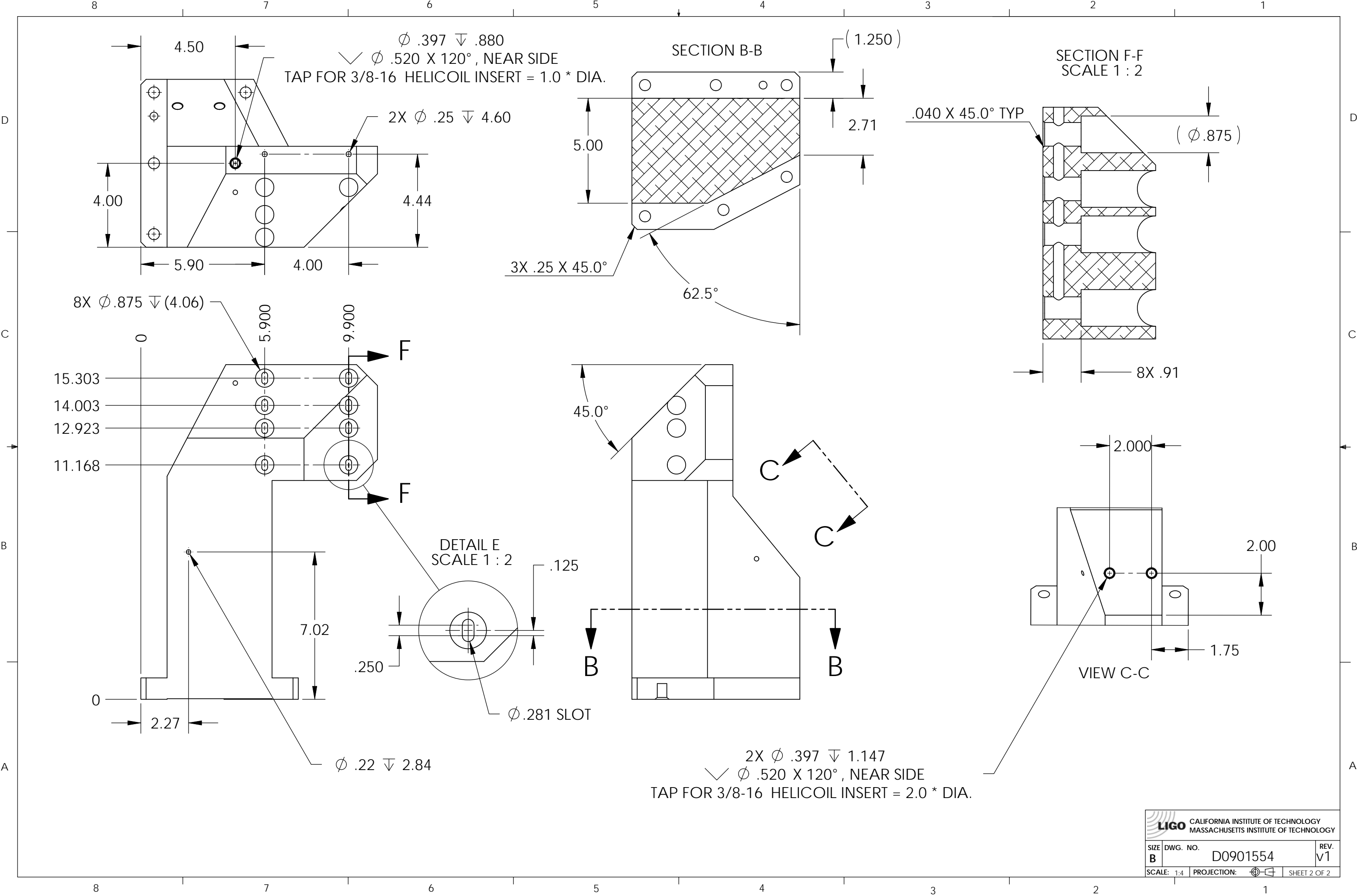
TOLERANCES:  
 .XX ± .015  
 .XXX ± .005

ANGULAR ± 0.5°

MATERIAL	6061-T6 Al	FINISH	32 μinch
----------	------------	--------	----------

CALIFORNIA INSTITUTE OF TECHNOLOGY MASSACHUSETTS INSTITUTE OF TECHNOLOGY		PART NAME	
ADVANCED LIGO		ACTUATOR POST STAGE 0-1, aLIGO BSC ISI	
DESIGNER	S.BARNUM	22 Feb. 2010	SIZE DWG. NO.
DRAFTER	M.HILLARD	22 Feb. 2010	B D0901554
CHECKER	F.MATICHARD	22 Feb. 2010	REV.
APPROVAL	K.MASON	22 Feb. 2010	v1
NEXT ASSY		SCALE: 1:4 PROJECTION:	
D0901182		SHEET 1 OF 2	

D0901554 Actuator Post Stage0-1, PART PDM REV: X-022, DRAWING PDM REV: X-008



CALIFORNIA INSTITUTE OF TECHNOLOGY MASSACHUSETTS INSTITUTE OF TECHNOLOGY	
SIZE	DWG. NO.
B	D0901554
SCALE: 1:4	PROJECTION:
REV.	SHEET 2 OF 2
v1	