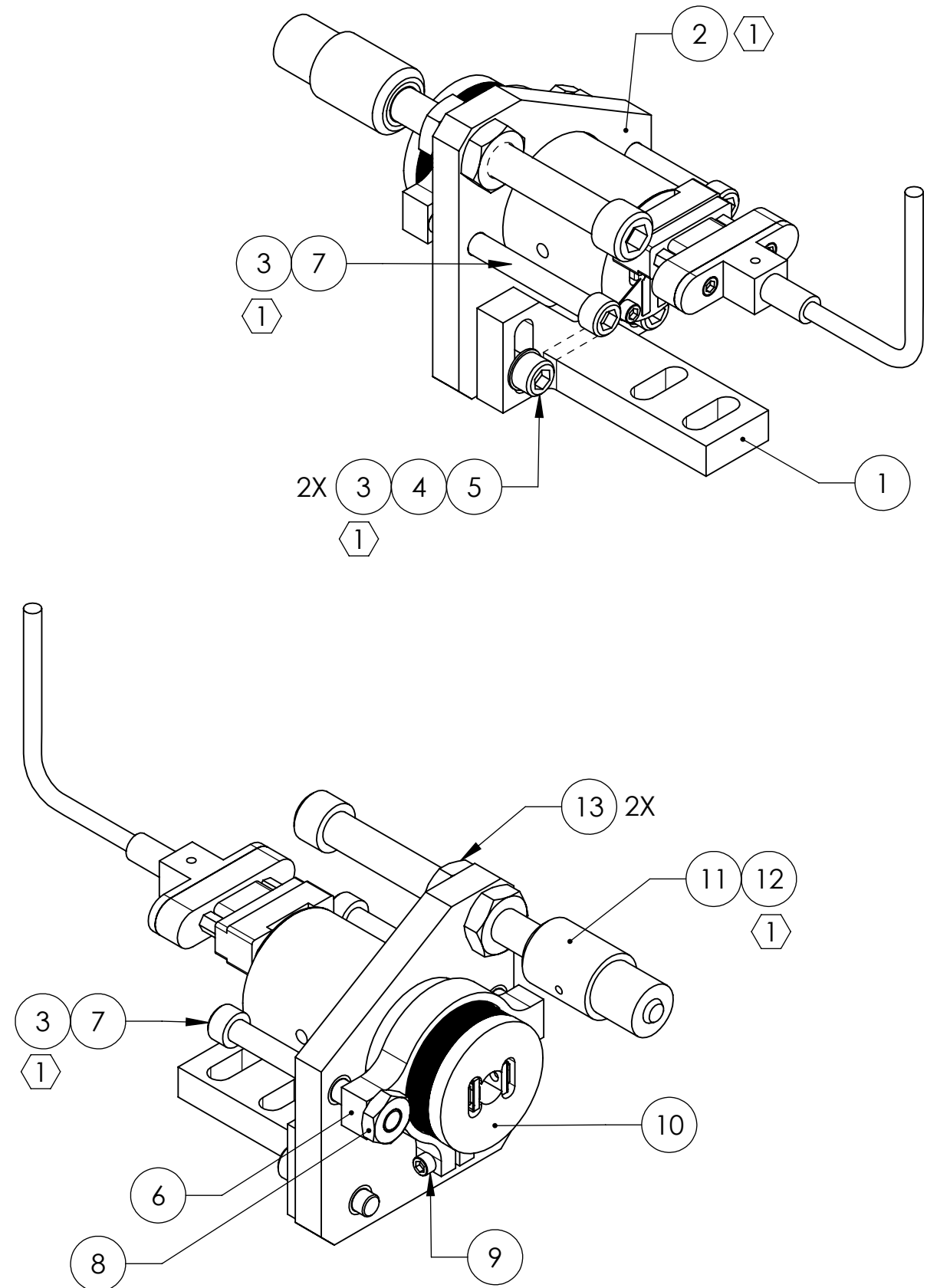


D0901553_Advanced_LIGO_SUS_HLTS_Lower_AOSEM_Alignment_Test_Mass_Part_PDM_Rev_V1-001_Drawing_PDM_Rev_V1-002

| REV. | DATE | DCN # | DRAWING TREE # |
|------|-------------|----------|----------------|
| v1 | 17 AUG 2009 | E0900243 | E080191 |
| v2 | 02 DEC 2009 | E0900446 | E080191 |
| - | - | - | - |



| ITEM NO. | PART NUMBER | DESCRIPTION | MATERIAL | REQ | SPARE | TOTAL |
|----------|-------------|---|-------------|-----|-------|-------|
| 13 | - | JAM NUT, 1/4-20 | 300 SSTL | 2 | 1 | 3 |
| 12 | 1185-4EN250 | HELICOIL, 1/4-20 X 0.25 LONG ^① | NITRONIC 60 | 1 | 1 | 2 |
| 11 | D080725 | EARTHQUAKE STOP FOR METAL OR GLASS | N/A | 1 | 0 | 1 |
| 10 | D0901065 | AOSEM ASSEMBLY | N/A | 1 | 0 | 1 |
| 9 | - | SCREW, SOCKET HEAD CAP, #2-56 UNC-2A X 0.375 LONG | 300 SSTL | 1 | 1 | 2 |
| 8 | - | LOCKNUT, #8-32 | 300 SSTL | 1 | 1 | 2 |
| 7 | - | SCREW, SOCKET HEAD CAP, #8-32 UNC-2A X 1.5 LONG, FULLY THREADED | 300 SSTL | 2 | 1 | 3 |
| 6 | D0901548 | AOSEM ADJUSTMENT COLLAR | 6061-T6 Al | 1 | 0 | 1 |
| 5 | - | SCREW, SOCKET HEAD CAP, #8-32 UNC-2A X 0.625 LONG | 300 SSTL | 2 | 1 | 3 |
| 4 | - | WASHER, FLAT, #8 (NAS 620-C8L OR EQUIVALENT) | 300 SSTL | 2 | 1 | 3 |
| 3 | 1185-2EN246 | HELICOIL, #8-32 X 0.246 LONG ^① | NITRONIC 60 | 4 | 2 | 6 |
| 2 | D0901549 | AOSEM ALIGNMENT BRACKET, TEST MASS ^① | 6061-T6 Al | 1 | 0 | 1 |
| 1 | D0900340 | LOWER AOSEM MOUNTING BRACKET, TEST MASS | 6061-T6 Al | 1 | 0 | 1 |

NOTES AND TOLERANCES: (UNLESS OTHERWISE SPECIFIED)

^①HELICOILS TO BE INSTALLED INTO ITEM NO. 2 BY LIGO AFTER ALL PARTS ARE CLEANED AND BAKED.

| | | | |
|----------|-----|--------|-----------|
| MATERIAL | N/A | FINISH | N/A μinch |
|----------|-----|--------|-----------|

| | | | |
|---|--|---|--------------------------------------|
| CALIFORNIA INSTITUTE OF TECHNOLOGY MASSACHUSETTS INSTITUTE OF TECHNOLOGY | | PART NAME LOWER AOSEM ALIGNMENT ASSY, TEST MASS | |
| SYSTEM ADVANCED LIGO | SUB-SYSTEM SUS | DESIGNER D. BRIDGES 20 JAN 2010 | SIZE DWG. NO. B |
| DRAFTER D. BRIDGES 20 JAN 2010 | CHECKER M. MEYER 21 JAN 2010 | APPROVAL | SCALE: 1:1 PROJECTION: |
| NEXT ASSY HLTS OVERALL ASSY | | REV. v2 | SHEET 1 OF 1 |