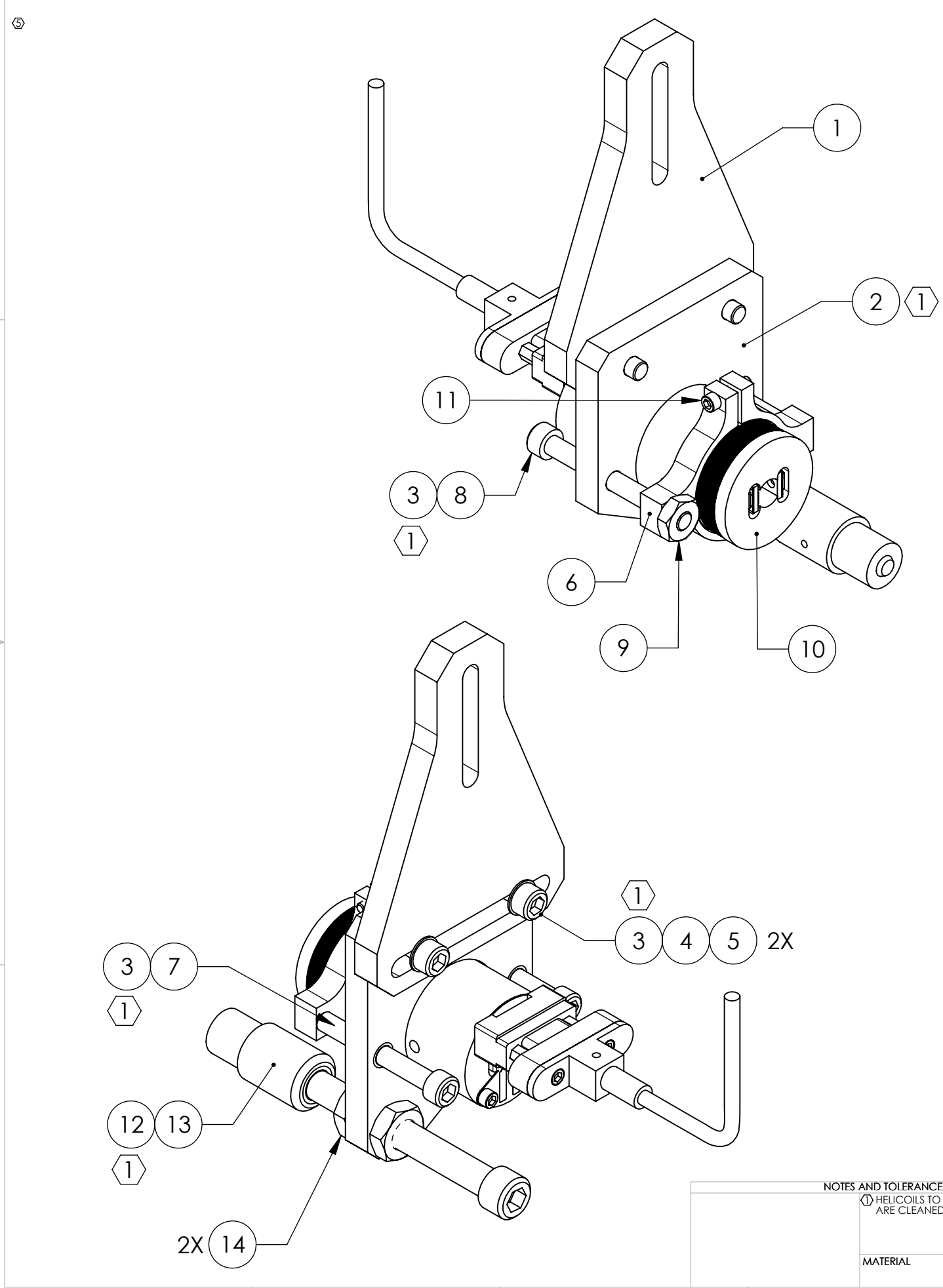


D0901552\_Advanced\_LIGO\_SUS\_HLTS\_Upper\_AOSEM\_Alignment\_Assembly\_Test\_Mass, PART PDM REV: X-007, DRAWING PDM REV: X-003

REV.	DATE	DCN #	DRAWING TREE #
v1	17 AUG 2009	E0900243	E080191
-	-	-	-
-	-	-	-



ITEM NO.	PART NUMBER	DESCRIPTION	MATERIAL	REQ	SPARE	TOTAL
14	-	JAM NUT, 1/4-20	300 SSSL	2	1	3
13	D080725	EARTHQUAKE STOP FOR METAL OR GLASS	N/A	1	0	1
12	1185-4EN250	HELICOIL, 1/4-20 X 0.25 LONG (1)	NITRONIC 60	1	1	2
11	-	SCREW, SOCKET HEAD CAP, #2-56 UNC-2A X 0.375 LONG	300 SSSL	1	1	2
10	D0901065	AOSEM ASSEMBLY	N/A	1	0	1
9	-	LOCKNUT, #8-32	300 SSSL	1	1	2
8	-	SCREW, SOCKET HEAD CAP, #8-32 UNC-2A X 1.5 LONG	300 SSSL	1	1	2
7	-	SCREW, SOCKET HEAD CAP, #8-32 UNC-2A X 1.25 LONG	300 SSSL	1	1	2
6	D0901548	AOSEM ADJUSTMENT COLLAR	6061-T6 Al	1	0	1
5	-	SCREW, SOCKET HEAD CAP, #8-32 UNC-2A X 0.625 LONG	300 SSSL	2	1	3
4	-	WASHER, FLAT, #8 (NAS 620-C8L OR EQUIVALENT)	300 SSSL	2	1	3
3	1185-2EN246	HELICOIL, #8-32 X 0.246 LONG (1)	NITRONIC 60	4	2	6
2	D0901549	AOSEM ALIGNMENT BRACKET, TEST MASS (1)	6061-T6 Al	1	0	1
1	D0901550	UPPER AOSEM MOUNTING BRACKET, TEST MASS	6061-T6 Al	1	0	1

NOTES AND TOLERANCES: (UNLESS OTHERWISE SPECIFIED)

(1) HELICOILS TO BE INSTALLED INTO ITEM NO. 2 BY LIGO AFTER ALL PARTS ARE CLEANED AND BAKED.

MATERIAL N/A FINISH N/A μinch

**PARTS LIST**

CALIFORNIA INSTITUTE OF TECHNOLOGY MASSACHUSETTS INSTITUTE OF TECHNOLOGY		PART NAME <b>UPPER AOSEM ALIGNMENT ASSY, TEST MASS</b>	
SYSTEM <b>ADVANCED LIGO</b>	SUB-SYSTEM <b>SUS</b>	DESIGNER B. MOORE	07 AUG 2009
DRAFTER B. MOORE	18 AUG 2009	SIZE <b>B</b>	DWG. NO. <b>D0901552</b>
CHECKER D. BRIDGES	18 AUG 2009	SCALE: 1:1	PROJECTION:
NEXT ASSY <b>HLTS OVERALL ASSY</b>	APPROVAL	SHEET 1 OF 1	REV. <b>v1</b>