

8

7

6

5

4

3

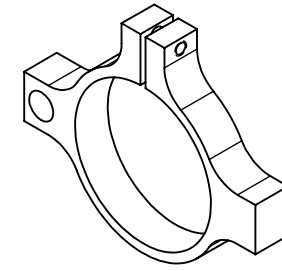
2

1

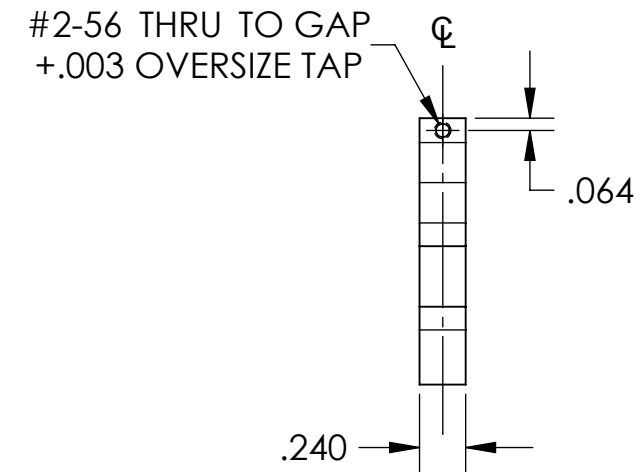
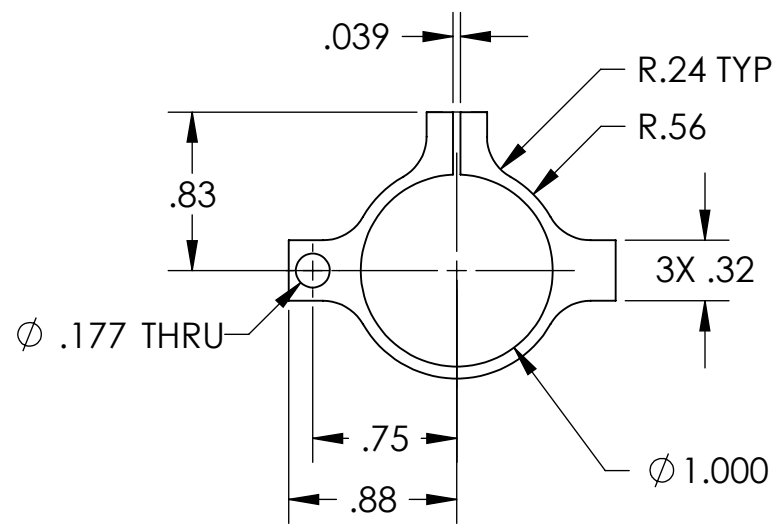
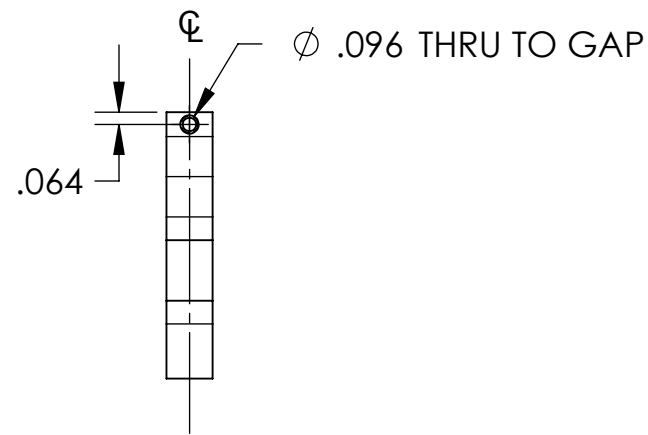
NOTES CONTINUED:

Ⓢ BAG ALL ITEMS AND MARK OR TAG EACH BAG WITH DRAWING NUMBER, REVISION, AND QUANTITY. EXAMPLE: DXXXXXX-VY, QTY: TBD

REV.	DATE	DCN #	DRAWING TREE #
v1	17 AUG 2009	E0900243	-
-	-	-	-
-	-	-	-



ISOMETRIC VIEW



D0901548_Advanced_LIGO_SUS_AOSEM_Adjustment_Collar, PART PDM REV: V1, DRAWING PDM REV: V1-000

D

D

C

C

B

B

A

A

NOTES AND TOLERANCES: (UNLESS OTHERWISE SPECIFIED)

DIMENSIONS ARE IN INCHES		1. INTERPRET DRAWING PER ASME Y14.5-1994.	
TOLERANCES:		2. REMOVE ALL SHARP EDGES, R.02 MIN.	
.XX ± .01		3. DO NOT SCALE FROM DRAWING.	
.XXX ± .005		4. ALL MACHINING FLUIDS MUST BE FULLY SYNTHETIC, FULLY WATER SOLUBLE AND FREE OF SULFUR, SILICONE, AND CHLORINE.	
ANGULAR ± 0.5°		MATERIAL	FINISH
		6061-T6 Al	63 μinch

LIGO CALIFORNIA INSTITUTE OF TECHNOLOGY
MASSACHUSETTS INSTITUTE OF TECHNOLOGY

SYSTEM: **ADVANCED LIGO** SUB-SYSTEM: **SUS**

NEXT ASSY: **MULTIPLE ASSYS**

PART NAME				AOSEM ADJUSTMENT COLLAR	
DESIGNER	RAL	SIZE	DWG. NO.	REV.	
DRAFTER	B. MOORE	18 AUG 2009	B	D0901548	v1
CHECKER	D. BRIDGES	18 AUG 2009	SCALE: 1:1		PROJECTION:
APPROVAL			SHEET 1 OF 1		

8

7

6

5

4

3

2

1