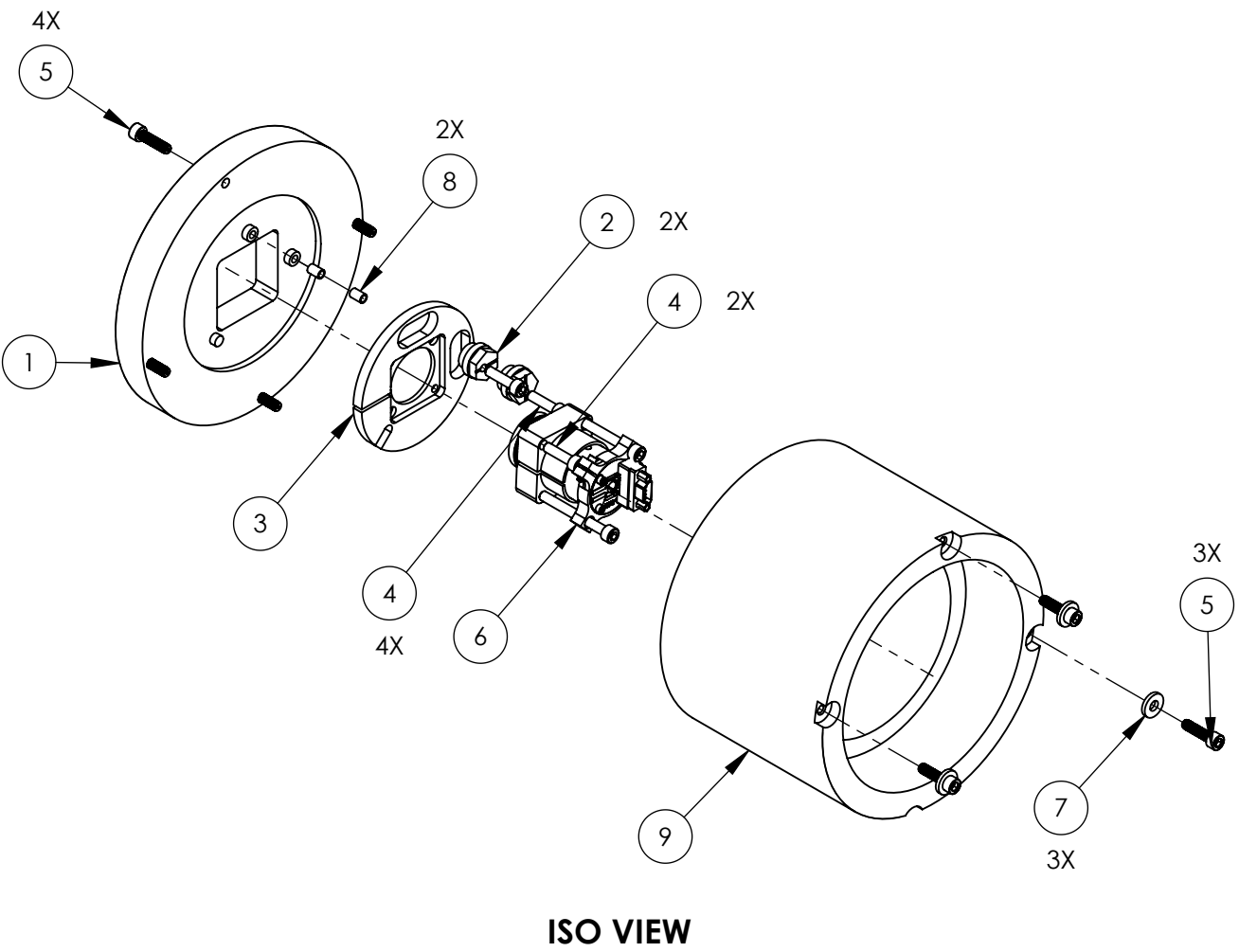
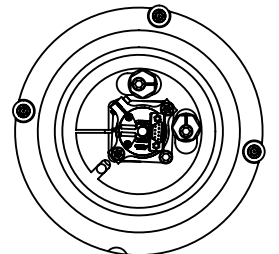


D080166\_alIGO\_SUS\_QUAD\_OSEM\_CAN\_ETM\_ITM\_VERSION, PART PDM REV: X-072, DRAWING PDM REV: X-008

# ITM

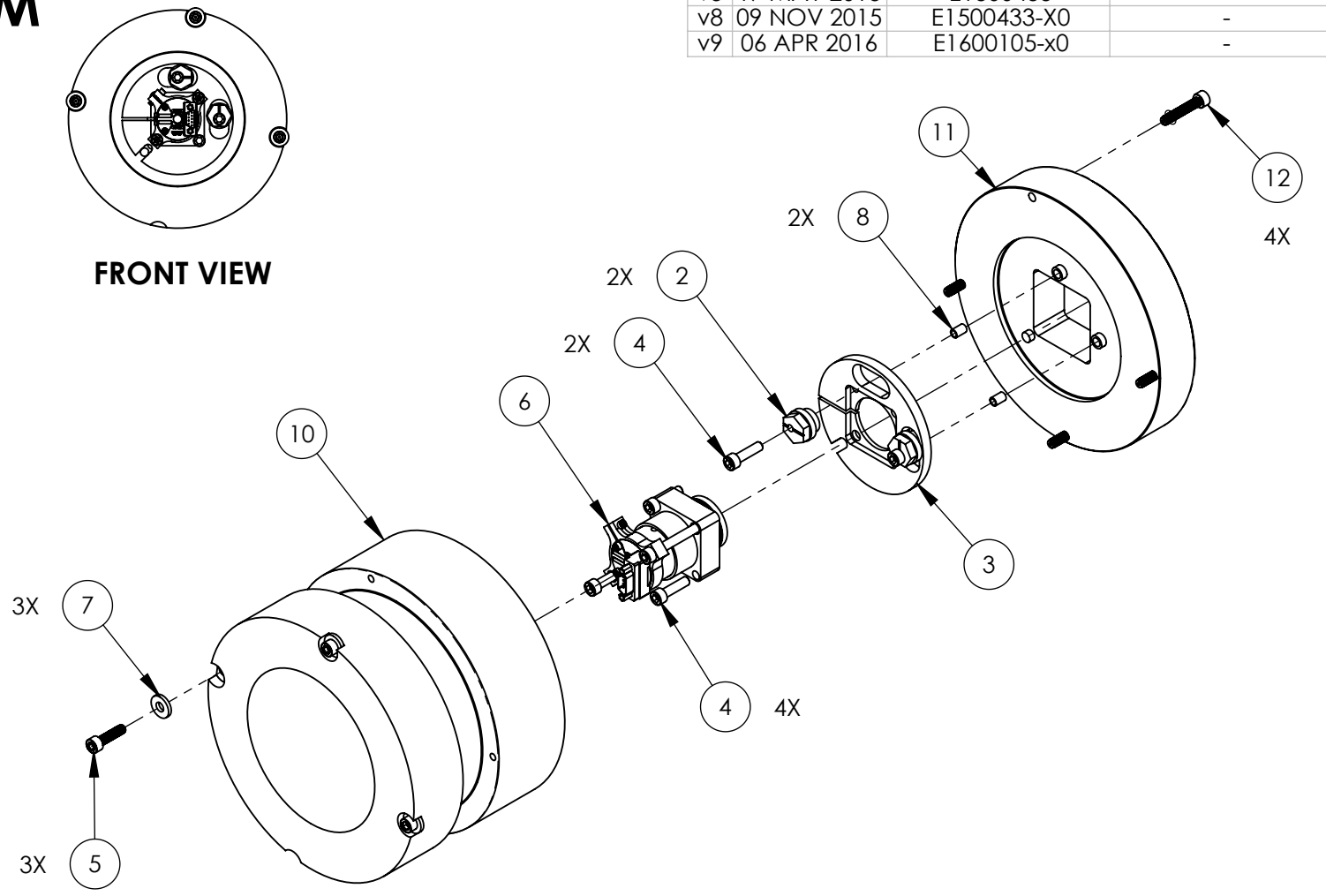


**ISO VIEW**



**FRONT VIEW**

# ETM



**FRONT VIEW**

REV.	DATE	DCN #	DRAWING TREE #
v5	17 MAY 2013	E1300455	-
v8	09 NOV 2015	E1500433-X0	-
v9	06 APR 2016	E1600105-x0	-

ITEM NO.	PART NUMBER	DESCRIPTION	MATERIAL	ITM QTY.	ETM QTY.
12	C-814-A UC COMPONENTS OR EQ.	SCREW, SHC, 8-32 X .88 LG., Ag PLATED (VENTED)	18-8 SSSL	-	4
11	D1600142	alIGO, SUS, PENRE ETM QUAD, CAN FRONT PLATE	304 SSSL	-	1
10	D1500428	alIGO, SUS, PENRE ETM QUAD, HEAVY OSEM CAN BODY	304 SSSL	-	1
9	D1002200	HEAVY ITM CAN BODY PEN RE ITM MASS CAN	304, 316 OR 302 SSSL	1	-
8	1185-2EN246 EMHART OR EQ.	8-32 X .246 LG.	--	2	2
7	MS16995-841	WASHER, FLAT #8	300 SSSL	3	3
6	D060349	PENRE ETM QUAD N-Ptype BASE PLATE, OSEM ASSY	N/A	1	1
5	C-810-A UC COMPONENTS OR EQ.	SCREW, SHC, 8-32 X .63 LG., Ag PLATED (VENTED)	18-8 SSSL	7	3
4	92185A196 McMASTER-CARR OR EQ.	SHCS 8-32 X 5/8" LG	316 SSSL	4	4
3	D060348	OSEM TRANSLATION PLATE PEN RE MASS CAN	6061-T6 Al	1	1
2	D060336	ALIGO, SUS, Penre MASS Quad N-Ptype, 2MM CAM, OSEM ADJUSTER	PH BRONZE	2	2
1	D080167	CAN FRONT PLATE PEN RE MASS CAN	304, 316 OR 302 SSSL	1	-

PARTS LIST

NOTES AND TOLERANCES: (UNLESS OTHERWISE SPECIFIED)

MATERIAL		FINISH		NEXT ASSY		PART NAME		DESIGNER		JOD		22 AUG 2010		SIZE DWG. NO.		REV.			
N/A		N/A μinch		D060341		LIGO CALIFORNIA INSTITUTE OF TECHNOLOGY MASSACHUSETTS INSTITUTE OF TECHNOLOGY		ADVANCED LIGO		SUB-SYSTEM		SUS		B		D080166		v9	
SCALE: NTS PROJECTION:  SHEET 1 OF 1																			