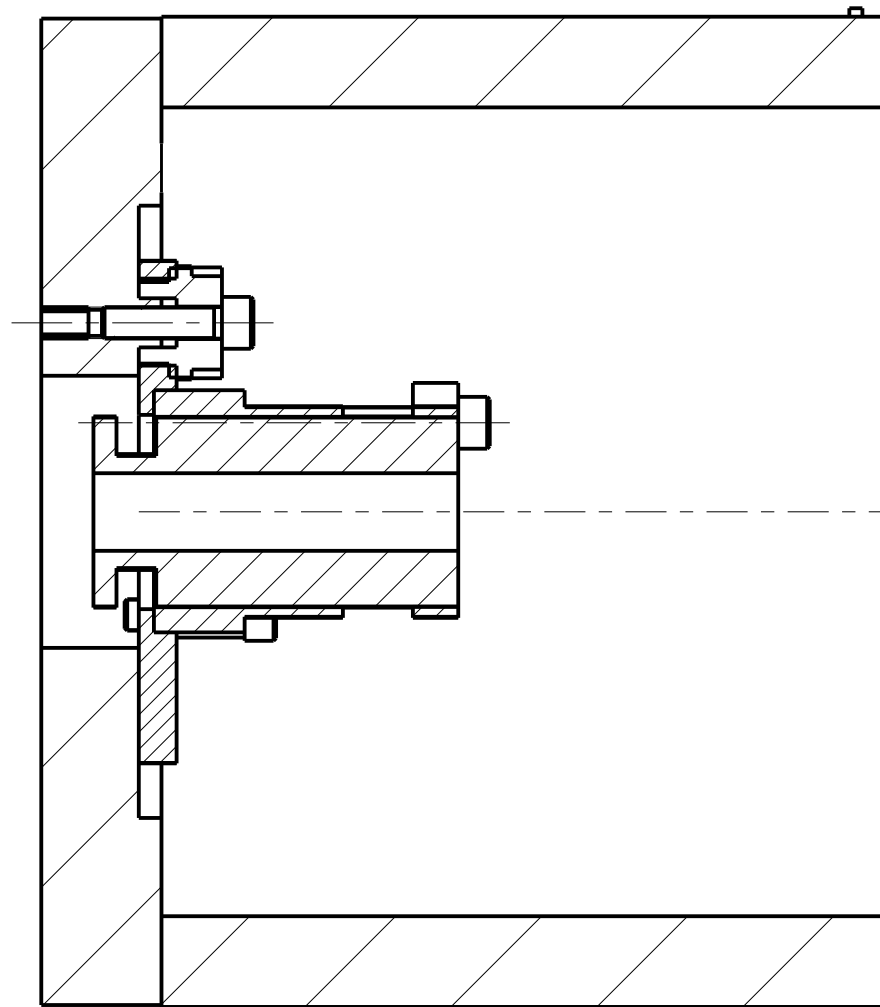
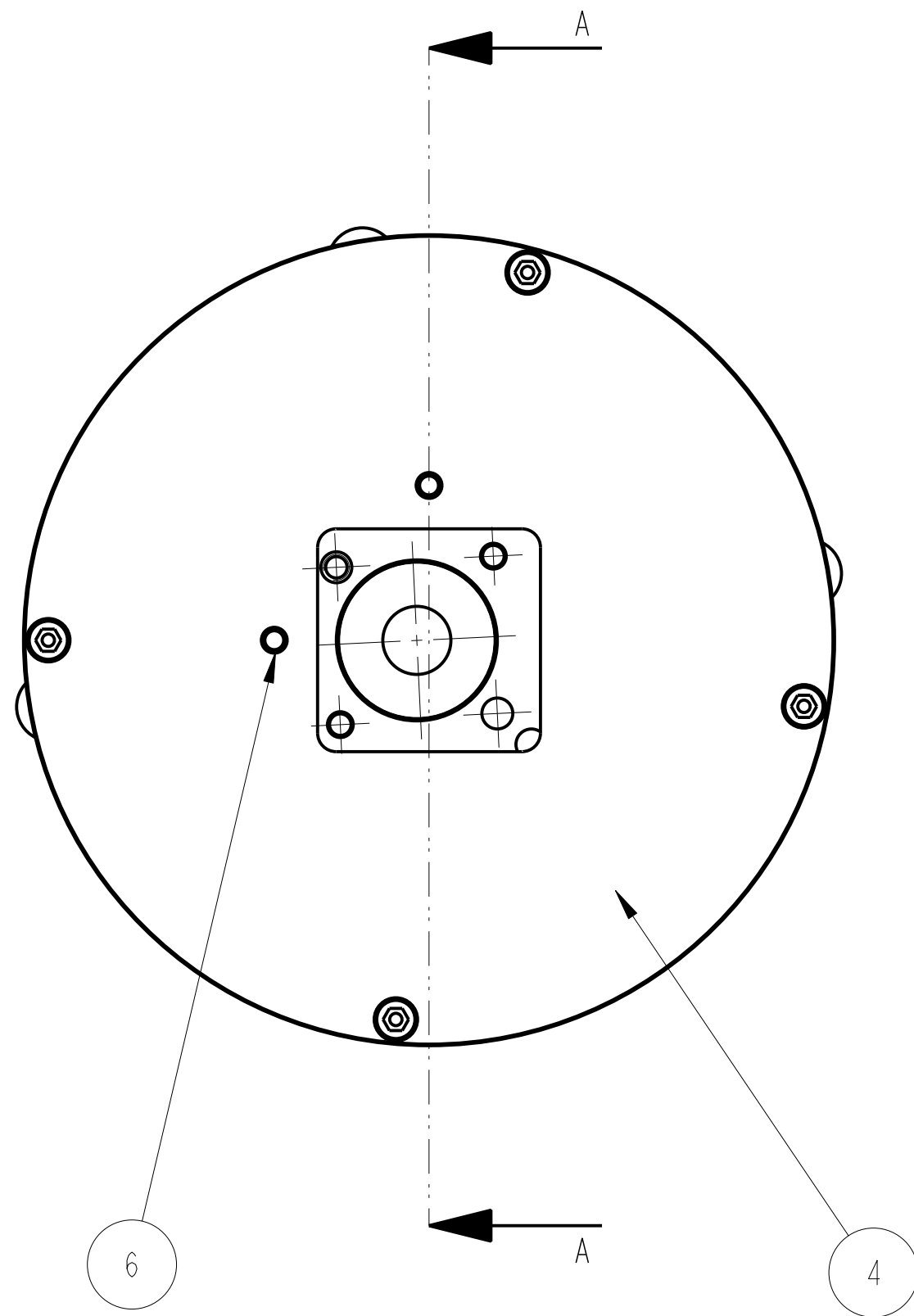
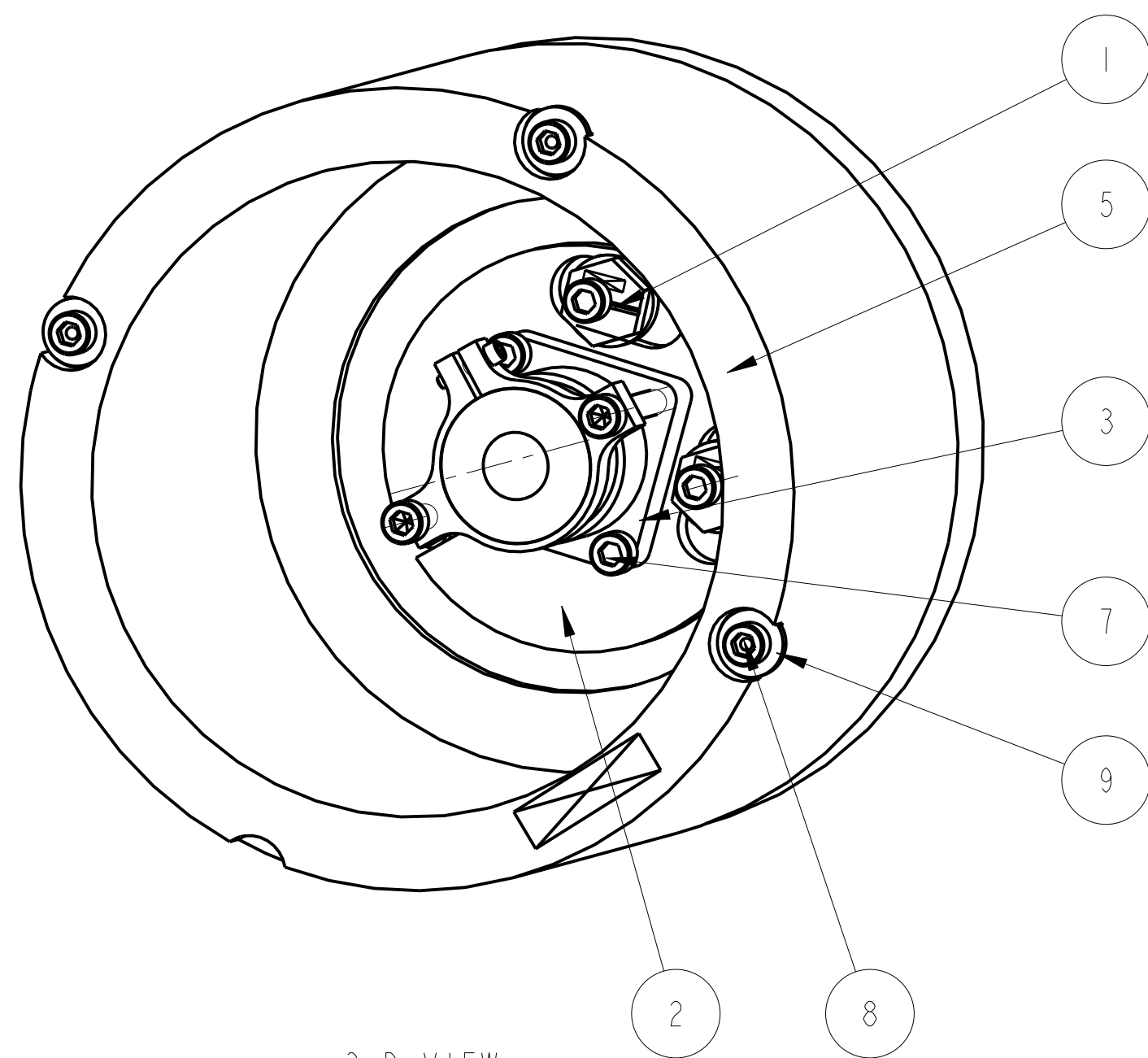
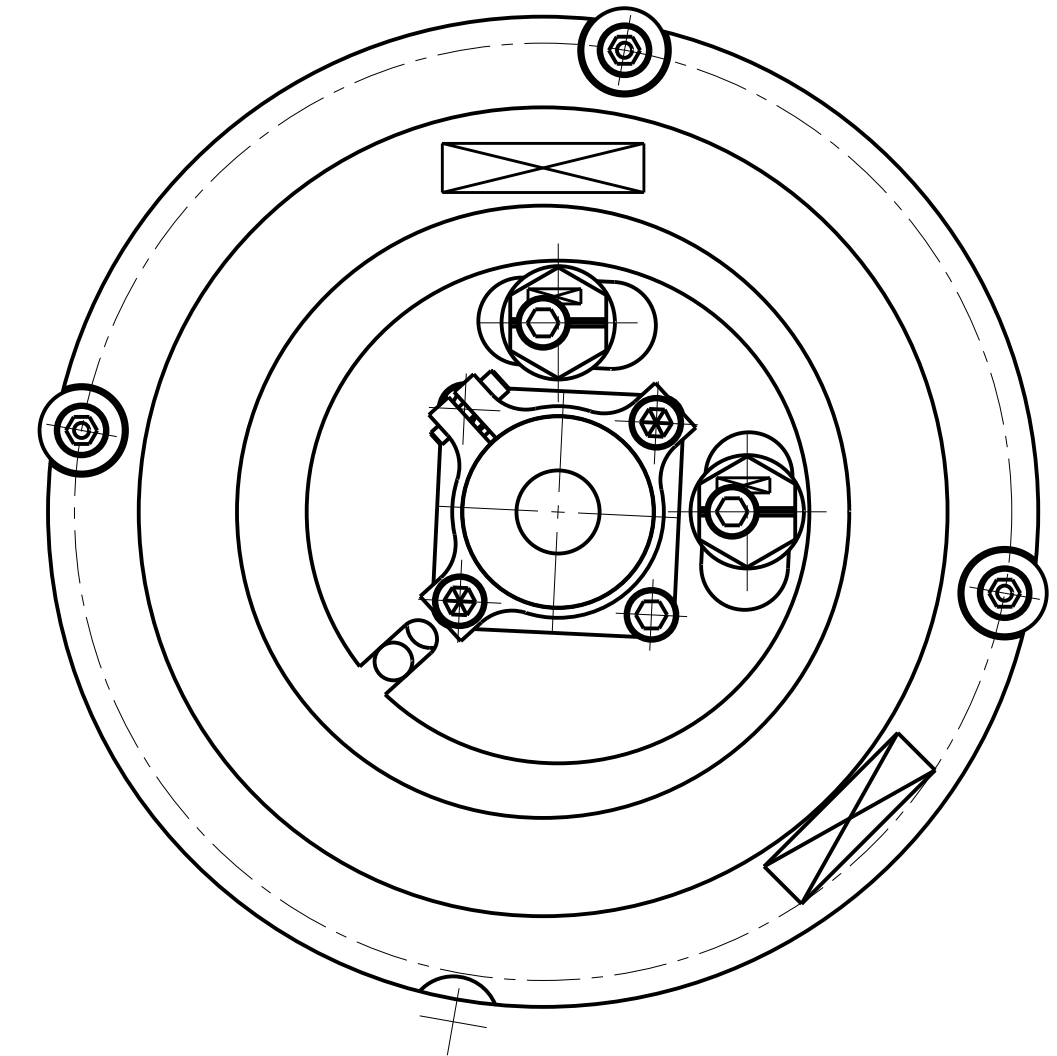


# ETM PEN RE MASS CAN



SECTION A-A



3-D VIEW

ITEM	QTY	SPARE	TOTAL	PART NUMBER	DESCRIPTION	MATERIALS
1	2			D060336	2MM CAM; OSEM ADJUSTER	PH BRONZE: -----
2	1			D060348	OSEM TRANSLATION PLATE; PEN RE MASS CAN	AL ALLOY: 5083
3	1			D060349	LIGO 1 OSEM MOUNT; (FOR PENRE MASS)	AS DRW: ---
4	1			D080167	CAN FRONT PLATE; PEN RE MASS CAN	ST. STEEL: 304 OR 316
5	1			D080168	CAN BODY; PEN RE MASS CAN	ST. STEEL: 304 OR 316
6	2				8-32 x 1.5D UNC THREAD INSERT; .	
7	4				8-32 UNC X 0.625" CAP HEAD; .	
8	7				8-32 UNC X 0.625" CAP HEAD SILVER PLATED, VENTED; .	
9	3				8-32 UNC WASHER; .	

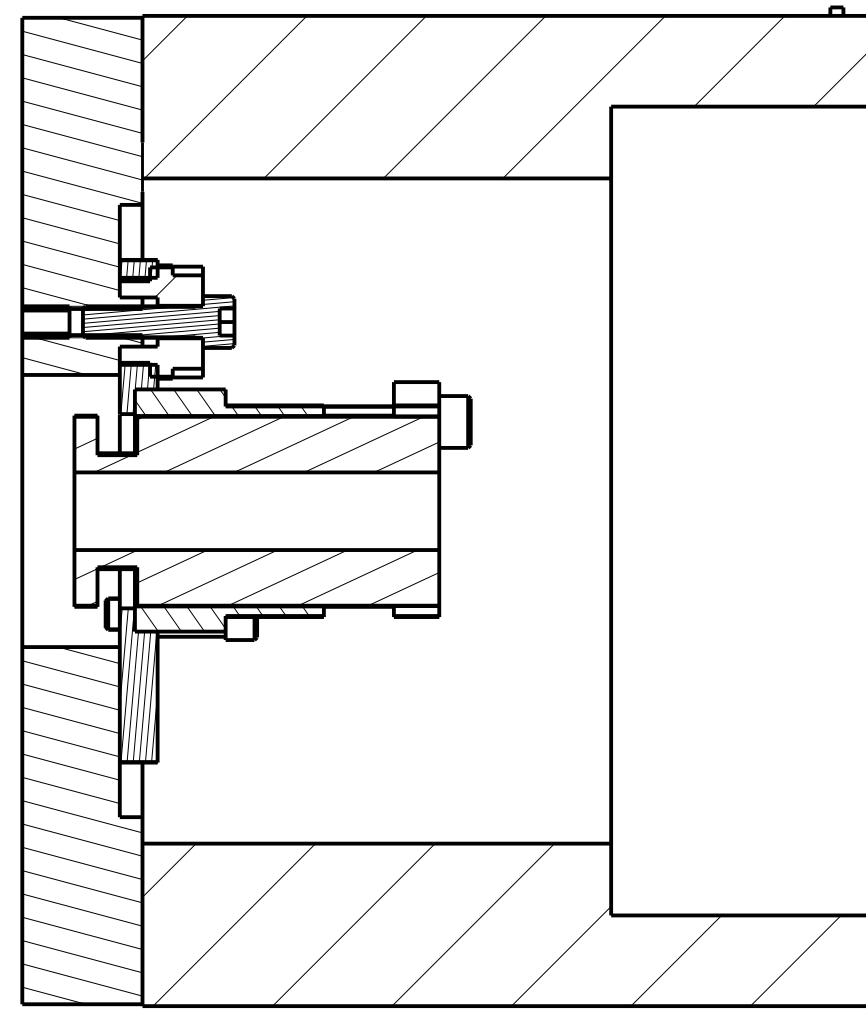
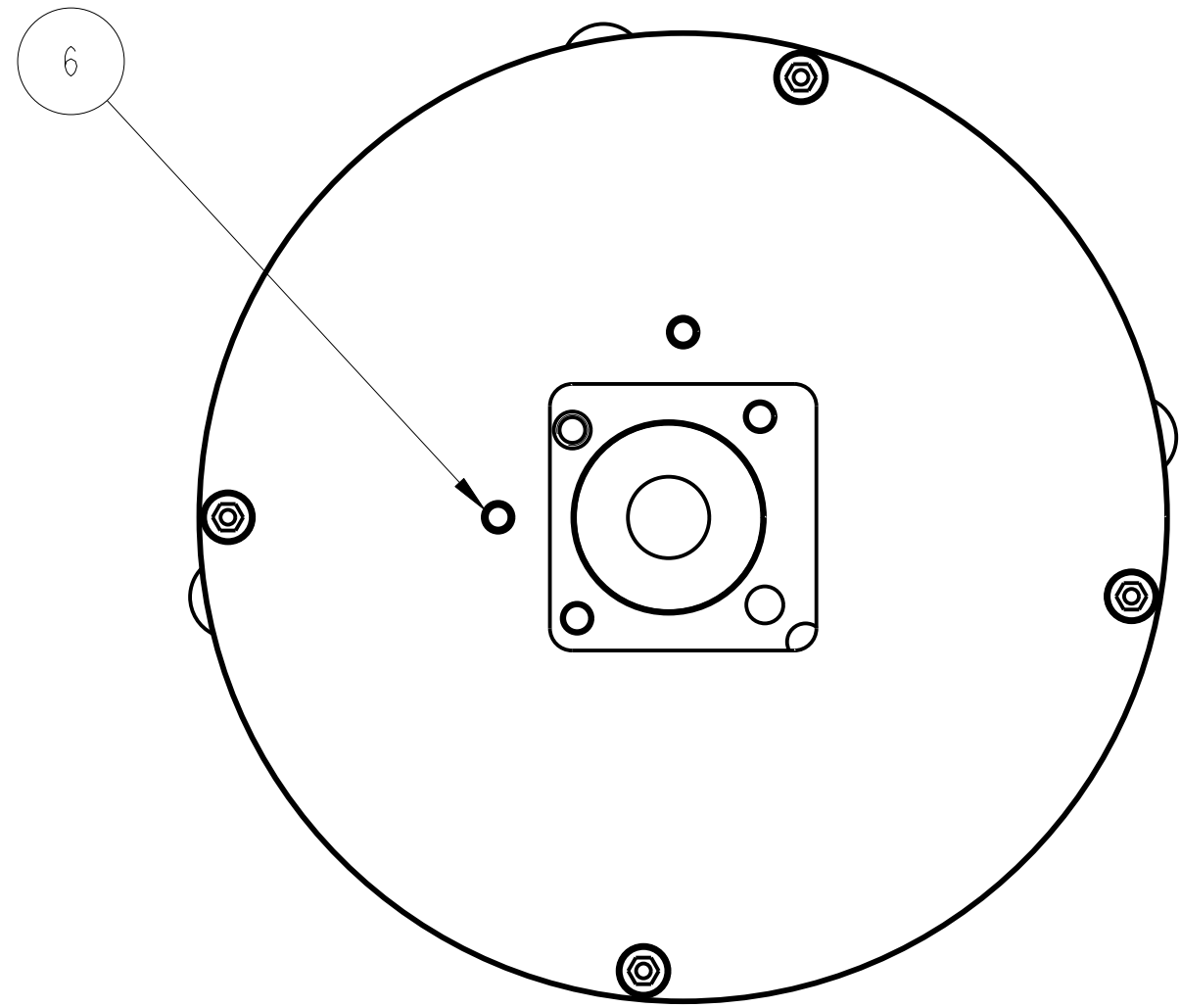
NOTES: (UNLESS OTHERWISE SPECIFIED)				DIMENSIONS ARE IN mm (INCHES)		TOLERANCES:	
1.	REMOVE ALL SHARP EDGES, R.02 MIN.			X.XX ± mm (INCHES)			
2.	DO NOT SCALE FROM DRAWING.			ANGULAR ± °			
3.	ALL MACHINING FLUIDS SHALL BE WATER SOLUBLE AND FREE OF SULFUR, CHLORINE AND SILICONE, SUCH AS CINCINNATI MILACRON'S CIMTECH 410 (STAINLESS STEEL)			MATERIAL: AS DRW			
4.	SCRIBE, ENGRAVE OR STAMP DRAWING PART NUMBER ON NOTED SURFACE OF PART AND A THREE DIGIT SERIAL NUMBER. SERIAL NUMBERS START AT 001 FOR THE FIRST PART AND PROCEED CONSECUTIVELY. USE .07" HIGH CHARACTERS. EXAMPLE: D020188-001. A VIBRATORY TOOL MAY BE USED.			FINISH: AS DRW			
				Ro = -----			
				DRAWN: J.O'DELL	DATE: 22/AUG/10	SIZE: C	DRG. NO. D080166
				CHECKED: J'OD	DATE: 22/AUG/10		REV. M.
				APPROVED: ---	DATE: ---		SCALE: 1:1
							PROJECTION: SHEET 1 OF 2

CALIFORNIA INSTITUTE OF TECHNOLOGY  
 MASSACHUSETTS INSTITUTE OF TECHNOLOGY  
 IGR, GLASGOW UNIVERSITY GEO 600 GROUP  
 RUTHERFORD APPLETON LABORATORIES

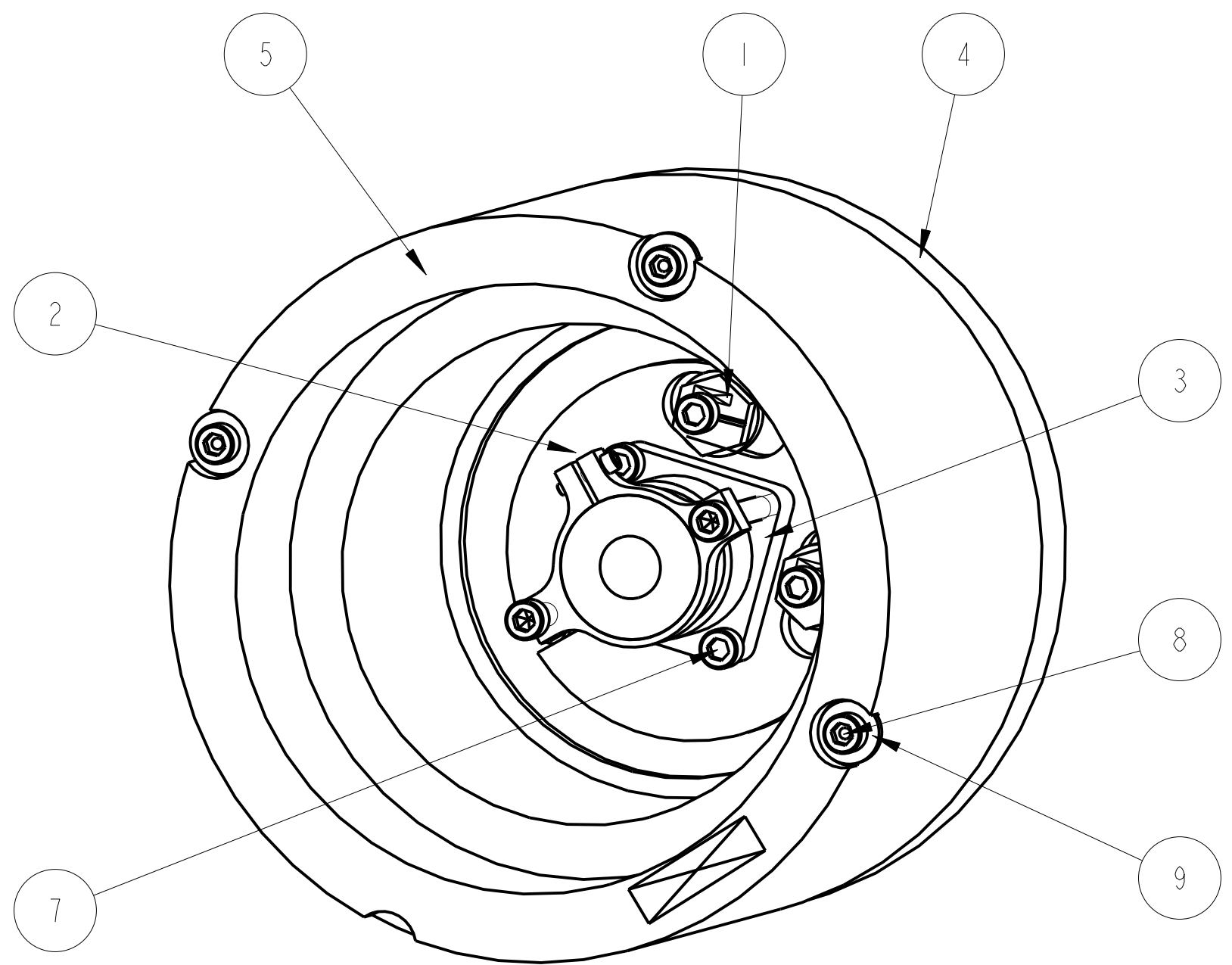
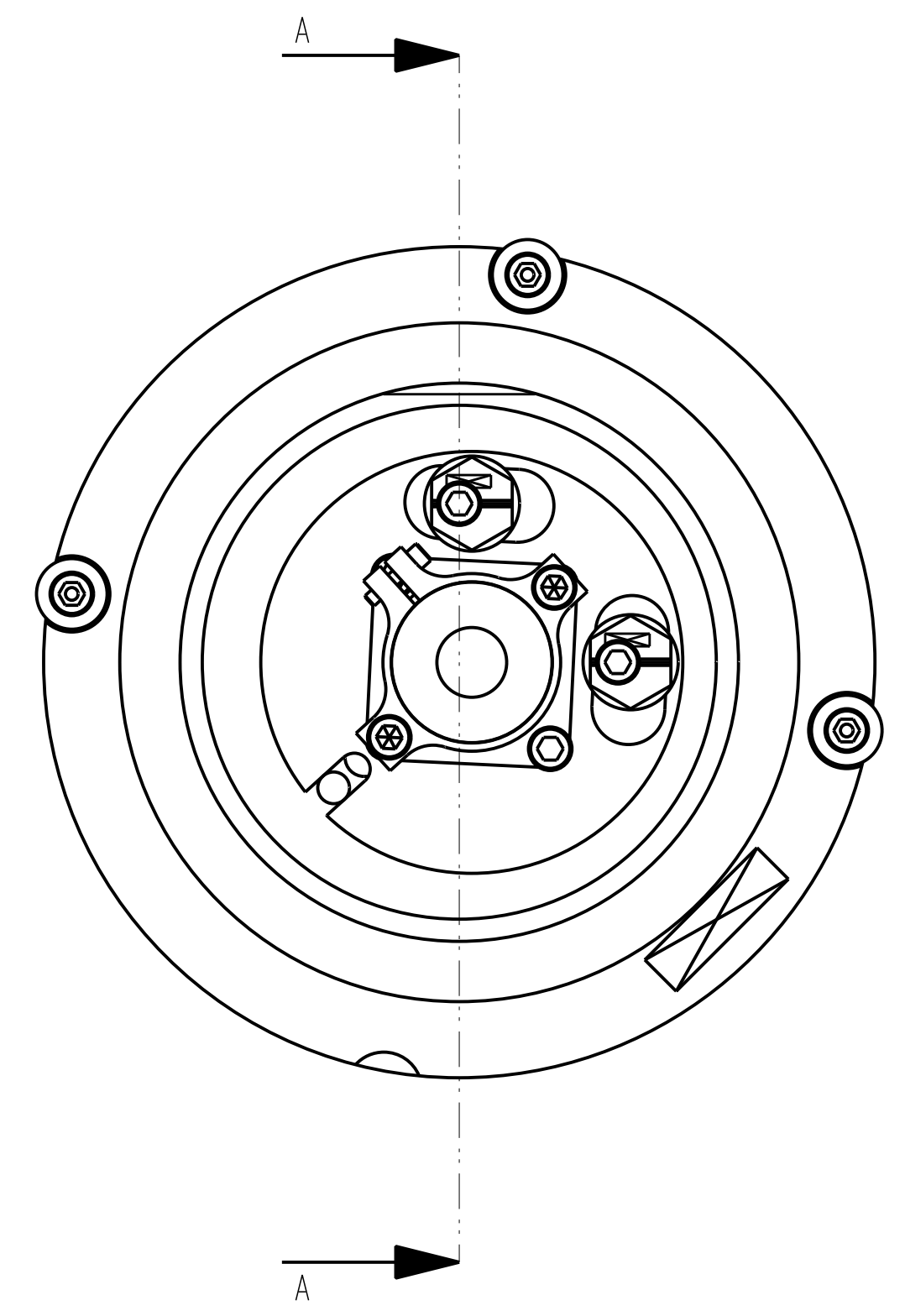
SYSTEM: **aLIGO**  
 SUB-SYSTEM: **SUS**  
 NEXT ASSY: **QUAD PEN-RE MASS**  
 PART NAME: **OSEM CAN**  
 ETM/ITM VERSION

REV.	DATE	DCN #	DRAWING TREE #

# ITM PEN RE MASS CAN (THIN CP)



SECTION A-A



ITEM	QTY	SPARE	TOTAL	PART NUMBER	DESCRIPTION	MATERIALS
1	2			D060336	2MM CAM; OSEM ADJUSTER	PH BRONZE: -----
2	1			D060348	OSEM TRANSLATION PLATE; PEN RE MASS CAN	AL ALLOY: 5083
3	1			D060349	LIGO 1 OSEM MOUNT; (FOR PENRE MASS)	AS DRW: ---
4	1			D080167	CAN FRONT PLATE; PEN RE MASS CAN	ST. STEEL: 304 OR 316
5	1			D1002200	HEAVY ITM CAN BODY; PEN RE ITM MASS CAN	ST. STEEL: 304 OR 316
6	2				8-32 x 1.5D UNC THREAD INSERT; .	
7	4				8-32 UNC X 0.625" CAP HEAD; .	
8	7				8-32 UNC X 0.625" CAP HEAD SILVER PLATED, VENTED; .	
9	3				8-32 UNC WASHER; .	

NOTES: (UNLESS OTHERWISE SPECIFIED)

- REMOVE ALL SHARP EDGES, R.02 MIN.
- DO NOT SCALE FROM DRAWING.
- ALL MACHINING FLUIDS SHALL BE WATER SOLUBLE AND FREE OF SULFUR, CHLORINE AND SILICONE, SUCH AS CINCINNATI MILACRON'S CIMTECH 410 (STAINLESS STEEL)
- SCRIBE, ENGRAVE OR STAMP DRAWING PART NUMBER ON NOTED SURFACE OF PART AND A THREE DIGIT SERIAL NUMBER. SERIAL NUMBERS START AT 001 FOR THE FIRST PART AND PROCEED CONSECUTIVELY. USE .07" HIGH CHARACTERS. EXAMPLE: D020188-001. A VIBRATORY TOOL MAY BE USED.

DIMENSIONS ARE IN mm (INCHES) TOLERANCES:  
 X.XX ± mm (INCHES)  
 ANGULAR ± °

MATERIAL: AS DRW  
 FINISH: AS DRW  
 Ra = -----

NAME	DATE
DRAWN J.O'DELL	
CHECKED J.O'D	22/AUG/10
APPROVED	

CALIFORNIA INSTITUTE OF TECHNOLOGY  
 MASSACHUSETTS INSTITUTE OF TECHNOLOGY  
 IGR, GLASGOW UNIVERSITY GEO 600 GROUP  
 RUTHERFORD APPLETON LABORATORIES

SYSTEM **ADVANCED LIGO**  
 SUB-SYSTEM **SUS**  
 NEXT ASSY **THIS**  
 PART NAME **OSEM CAN**  
**ETM/ITM VERSION**

SCALE 1:1 PROJECTION: SHEET 2 OF 2