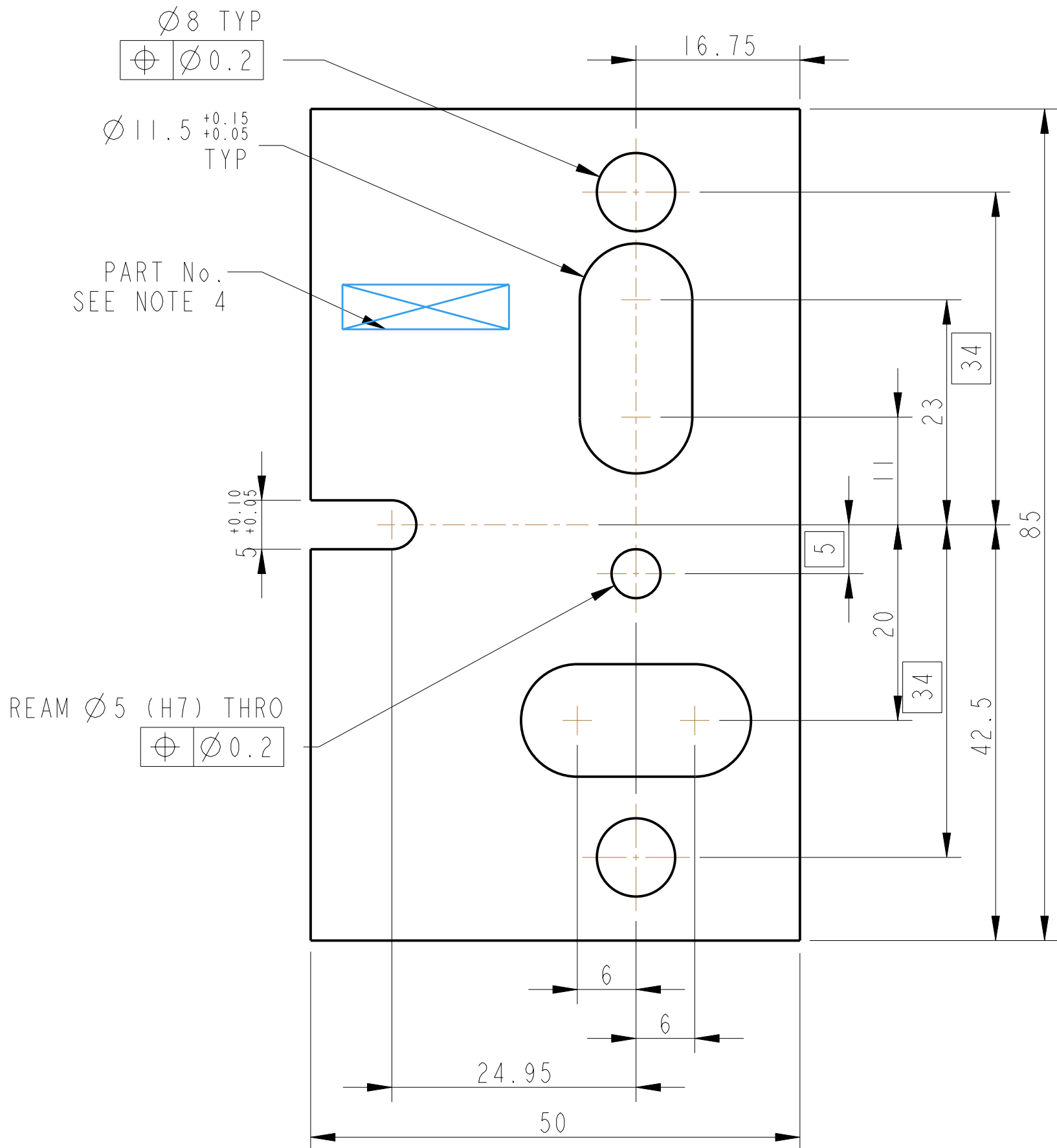


REV.	DATE	DCN #	DRAWING TREE #
B	21/DEC/07	E060260-B	
C	22/JULY/08	E080372	

D  
C  
B  
A

D  
C  
B  
A



NOTES: (UNLESS OTHERWISE SPECIFIED)

- REMOVE ALL SHARP EDGES, R.02 MIN.
- DO NOT SCALE FROM DRAWING.
- ALL MACHINING FLUIDS SHALL BE WATER SOLUBLE AND FREE OF SULFUR, CHLORINE AND SILICONE, SUCH AS CINCINNATI MILACRON'S CIMTECH 410 (STAINLESS STEEL)
- SCRIBE, ENGRAVE OR STAMP DRAWING PART NUMBER ON NOTED SURFACE OF PART AND A THREE DIGIT SERIAL NUMBER. SERIAL NUMBERS START AT 001 FOR THE FIRST PART AND PROCEED CONSECUTIVELY. USE .07" HIGH CHARACTERS. EXAMPLE: D020188- 001. A VIBRATORY TOOL MAY BE USED.

DIMENSIONS ARE IN mm [INCHES]  
TOLERANCES:  
X.XX ±0.2 mm  
ANGULAR ±0.25 °

MATERIAL: AL ALLOY 5083

FINISH: CLEAN AND DEGREASED  
√μm [μin] Ra = 1.6

NAME	DATE
DRAWN I WILMUT	04/Dec/07
CHECKED MB	15/MAR/10
APPROVED JOD	15/MAR/10

SCALE 2:1 PROJECTION:

CALIFORNIA INSTITUTE OF TECHNOLOGY  
MASSACHUSETTS INSTITUTE OF TECHNOLOGY  
IGR, GLASGOW UNIVERSITY GEO 600 GROUP  
RUTHERFORD APPLETON LABORATORIES

SYSTEM **aLIGO**

SUB-SYSTEM **SUS**

NEXT ASSY **QUAD LOWER STRUCTURE**

PART NAME **UIM MASS STOP BOTH CHAINS**

SIZE **B** DRG. NO. **D070548** REV **D.**

SHEET 1 OF 1