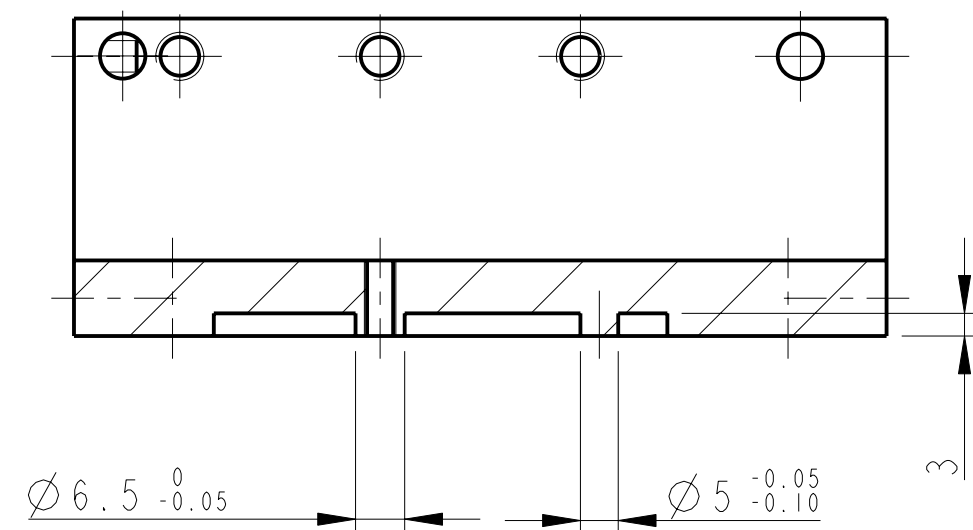


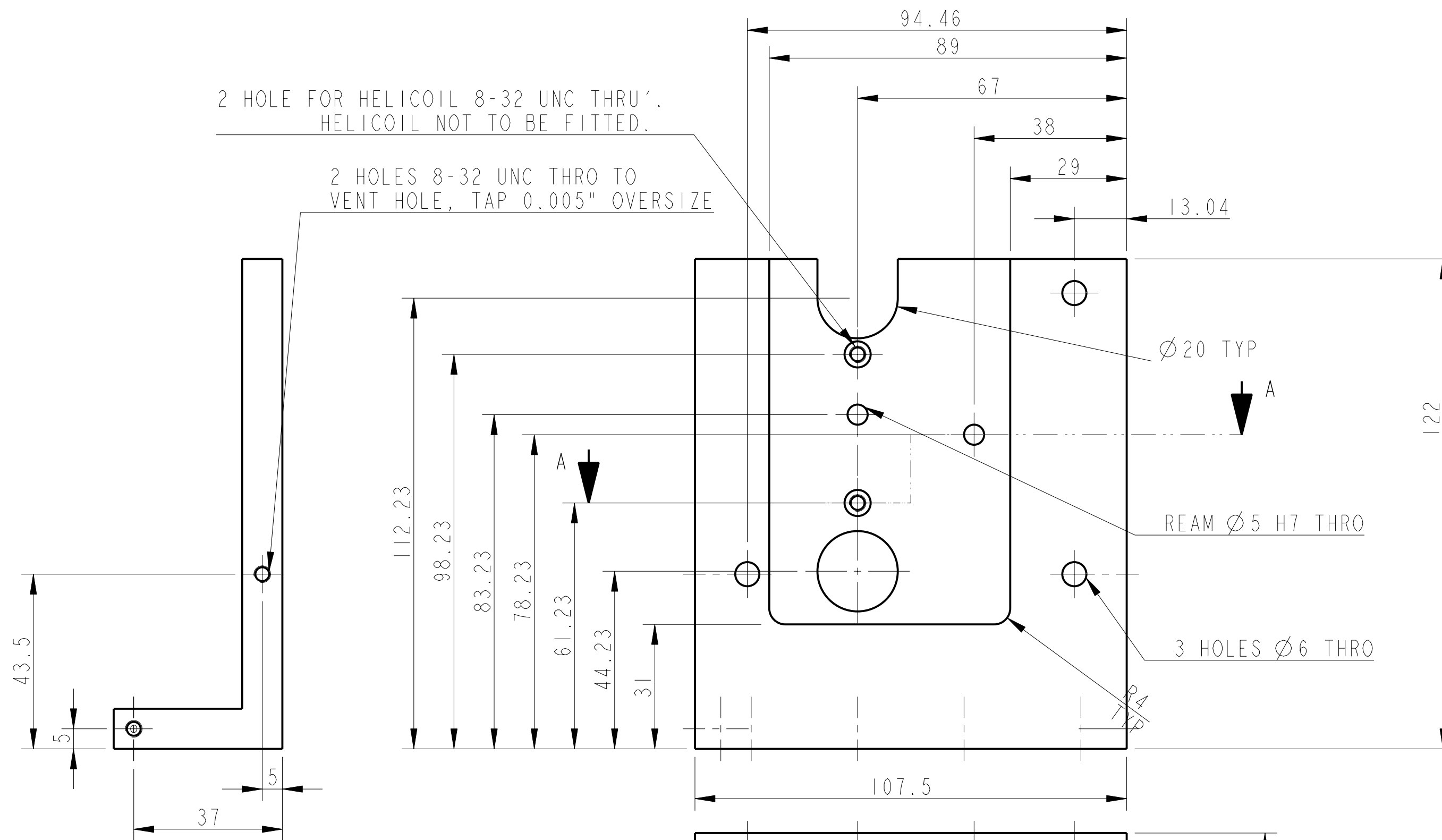
REV.	DATE	DCN #	DRAWING TREE #
B	21/DEC/07	E060260-B	
C	22/JULY/08	E080372	



SECTION A-A

2 HOLE FOR HELICOIL 8-32 UNC THRU'.
HELICOIL NOT TO BE FITTED.

2 HOLES 8-32 UNC THRU TO
VENT HOLE, TAP 0.005" OVERSIZE



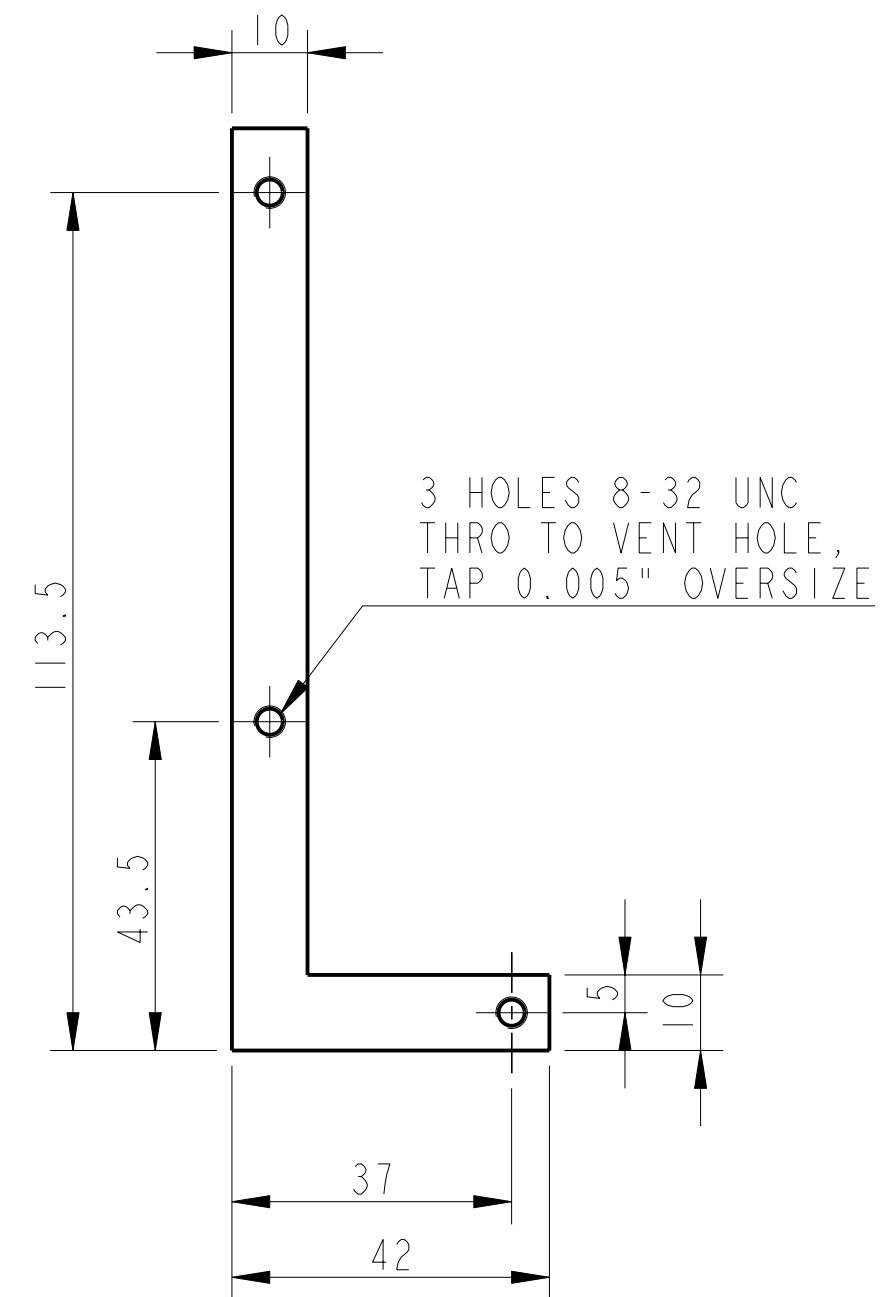
Ø20 TYP

REAM Ø5 H7 THRO

3 HOLES Ø6 THRO

2 HOLES Ø6 THRO

3 HOLES TAPPED
THRU FOR 1/4-20
UNC HELICOIL,
HELICOIL NOT TO
BE FITTED



3 HOLES 8-32 UNC
THRU TO VENT HOLE,
TAP 0.005" OVERSIZE

NOTES: (UNLESS OTHERWISE SPECIFIED)

- REMOVE ALL SHARP EDGES, R.02 MIN.
- DO NOT SCALE FROM DRAWING.
- ALL MACHINING FLUIDS SHALL BE WATER SOLUBLE AND FREE OF SULFUR, CHLORINE AND SILICONE, SUCH AS CINCINNATI MILACRON'S CIMTECH 410 (STAINLESS STEEL).
- SCRIBE, ENGRAVE OR STAMP DRAWING PART NUMBER ON NOTED SURFACE OF PART AND A THREE DIGIT SERIAL NUMBER. SERIAL NUMBERS START AT 001 FOR THE FIRST PART AND PROCEED CONSECUTIVELY. USE .07" HIGH CHARACTERS. EXAMPLE: D020188-001. A VIBRATORY TOOL MAY BE USED.

DIMENSIONS ARE IN mm [INCHES]
TOLERANCES:
X.XX ± mm [INCHES]
ANGULAR ±0.25°

MATERIAL: AL ALLOY 6061

FINISH: CLEAN AND DEGREASED
Ra = 1.6

NAME	DATE
DRAWN I WILMUT	29/NOV/07
CHECKED AJB	19MAY08
APPROVED AJB	22/JULY/08

SCALE: 1:1 PROJECTION: FIRST ANGLE SHEET 1 OF 1

CALIFORNIA INSTITUTE OF TECHNOLOGY
GLASGOW UNIVERSITY GEO 600 GROUP
RUTHERFORD APPLETON LABORATORIES

SYSTEM: **ADVANCED LIGO**
SUB-SYSTEM: **SUS**
NEXT ASSY: **D060454**
PART NAME: **REACTION CHAIN UIM STOP**
RIGHT HAND
DRG. NO.: **D070547**